

OREGON STATE PARKS & RECREATION DIVISION SURVEY  
STAGE COACH FOREST WAYSIDE  
NE.1/4 & E.1/2, S.E.1/4 SECTION 2, T.33S., R.6W., W.M.  
SCALE: 1" = 400'  
NOVEMBER 1, 1988  
JOSEPHINE & DOUGLAS COUNTY

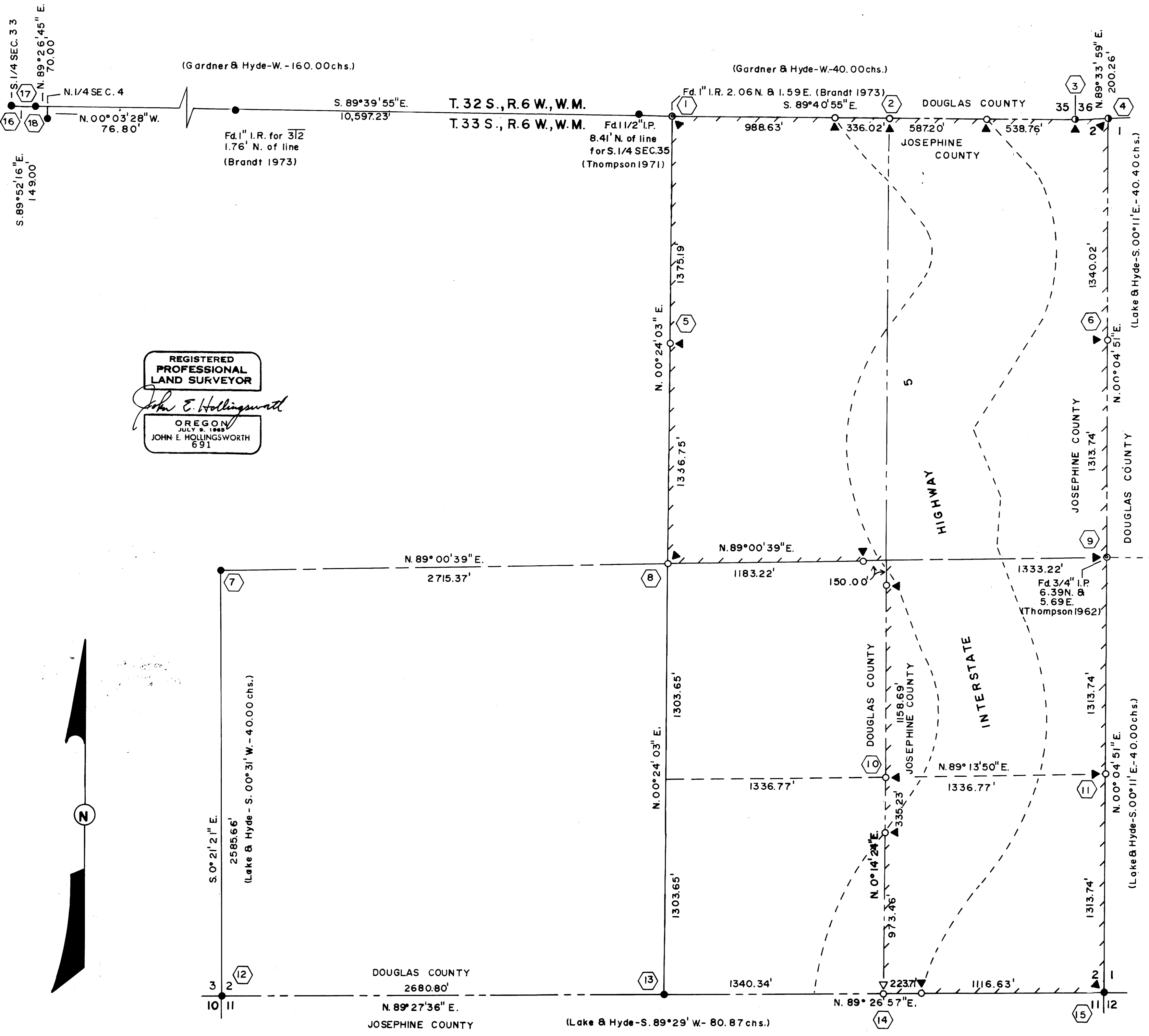
FILED TF  
DEC 22 1988  
COUNTY SURVEYOR  
DOUGLAS COUNTY, ORE.

COUNTY SURVEYORS FILE DATA  
DO NOT REMOVE FROM OFFICE

(SEE ACCOMPANYING NARRATIVE & OREGON CORNER RESTORATION FORMS)

- Indicates found monument.
- Indicates found monument, set yellow plastic cap marked "OREGON STATE PARKS" in found 1 inch iron pipe.
- Indicates set 5/8"x30" iron rod with 2" aluminum cap marked "OREGON STATE PARKS DIVISION".
- Indicates set 1"x30" iron post with 2 3/8" brass cap marked "OREGON STATE PARKS".
- ▲ Indicates set orange carsonite post with decal marked "PROPERTY BOUNDARY - STATE PARK LAND BEHIND THIS SIGN".
- ▼ Indicates set orange carsonite post marked "E1/16 2/11".
- Indicates park boundary.
- - - - Indicates Josephine & Douglas County Line.
- ( ) Indicates record information.
- Indicates see accompanying corner restoration forms with corresponding number.

OREGON STATE PARKS  
525 TRADE ST. S.E.  
SALEM, OR. 97310



M 107-16

OREGON STATE PARKS & RECREATION DIVISION SURVEY  
NE 1/4 & E 1/2, SE 1/4 Section 2, T.33S, R6W, W.M.  
Stage Coach Forest Wayside  
Josephine & Douglas Counties, Oregon  
November 1, 1988

NARRATIVE

(See Accompanying Plat & Oregon Corner Restoration Forms)

The purpose of this survey was to establish the boundaries of Stage Coach Forest Wayside in the NE1/4 and E1/2, SE1/4 Section 2, T33S, R6W, W.M.

Bearings are from a solar observation, local hour angle method. Control was established using a Pentax, (PX-10D), total station. The Parks survey crew consisted of R. Hill, L. Boge & H. Hanson.

During the course of the survey along the township line between T32S, and T33S, it was found that there are 8 quarter and section corners between Section corner 35 and 36 and the N1/4 corner Section 4, many of which have been set by proportioning in previous Surveys (Brandt 1973 and Thompson 1971). The method used to proportion the lost corners by previous surveys was to proportion corners for sections to the south between control to the south and corners for sections to the north between control to the north. The original Section corner 35 and 36 was treated as a closing corner and not on line. However, analysis of the original notes shows that all the corners were set and approved as being on line with no closing corners. There should be no distinction between corners as to whether they are for sections to the north or to the south. Proportioning should be done between the N1/4 Section 4 and the Section corner 35 and 36 for all lost corners along the township line. These corners need to be proportioned along a latitudinal arc.

The actual corner position of the N1/4 Section 4 falls in Cow Creek but the original position was determined by a distance-distance intersection from two monumented witness points to the south and west of the corner.

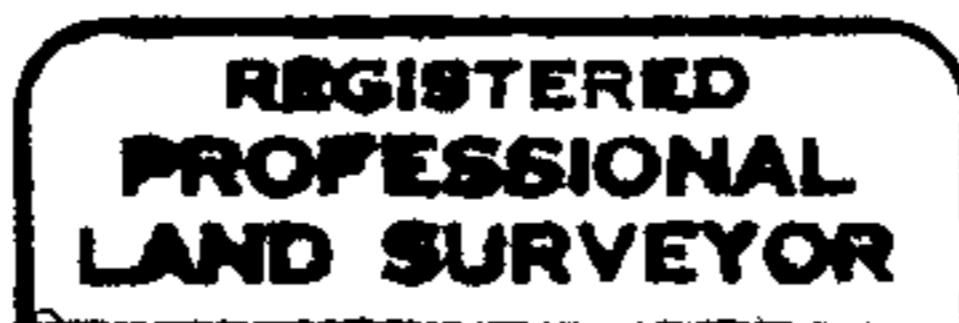
The 1" iron rod set by Brandt in 1973 for the N1/4 corner Section 2 was rejected and a 1"x30" iron post with a 2 3/8" brass cap set, which we obtained from Dr. Ingram, Douglas County Surveyor.

The 3/4" iron pipe set by Thompson in 1962 for the E1/4 Section 2 was found to be out of position by about 8 feet. At the request of the Douglas County Surveyor we set an iron post at the proportioned E1/4 corner of Section 2.

Acreage on the original plat indicates that all error in the original township subdivision was thrown into the lot along the N1/4 of Section 2 and therefore all the N1/16's of Section 2 are set 20 chains record measure north from the appropriate 1/4 corner to the south and the Section was subdivided accordingly.

Right of way points were set at the intersection of the aliquot boundary lines with the Interstate 5 east and west right of way except in the vicinity of the CE1/16 Section 2 due to that portion of the right of way line being in an area susceptible to slide.

Additional monuments were set on the park boundary lines as indicated on the survey plat. Boundary lines were brushed, lathed, tagged with signs marked Oregon State Park Boundary and in some portions blazed.



*John E. Hollingsworth*



FILED

TF

DEC 22 1988

COUNTY SURVEYOR  
DOUGLAS COUNTY, ORE.

John E. Hollingsworth  
Oregon State Parks & Recreation Division  
525 Trade Street SE  
Salem, OR 97310

63/62 - 2a

FILED

DEC 22 1988

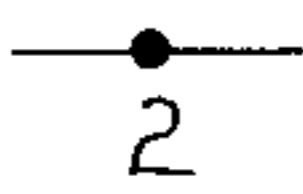
OREGON CORNER RESTORATION FORM

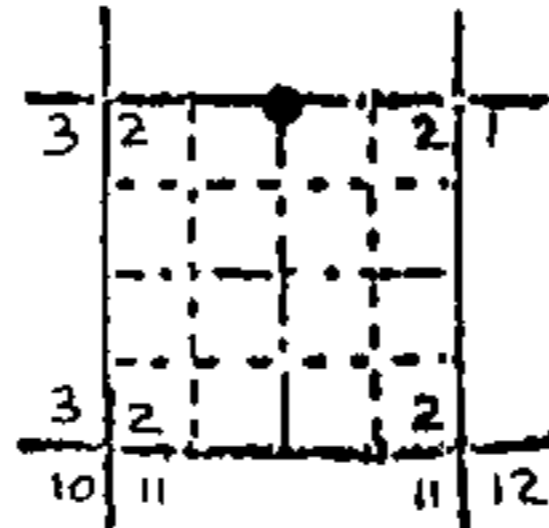
Section 2 Township 33S Range 6W

COUNTY SURVEYOR  
DOUGLAS COUNTY, ORE.

County Douglas Date 8/23/88

Corner Designation

  
2  
Quarter Corner



- Condition Report Only
- Not Found
- Renewed
- Unrecorded
- Surveyed In
- Referenced Out

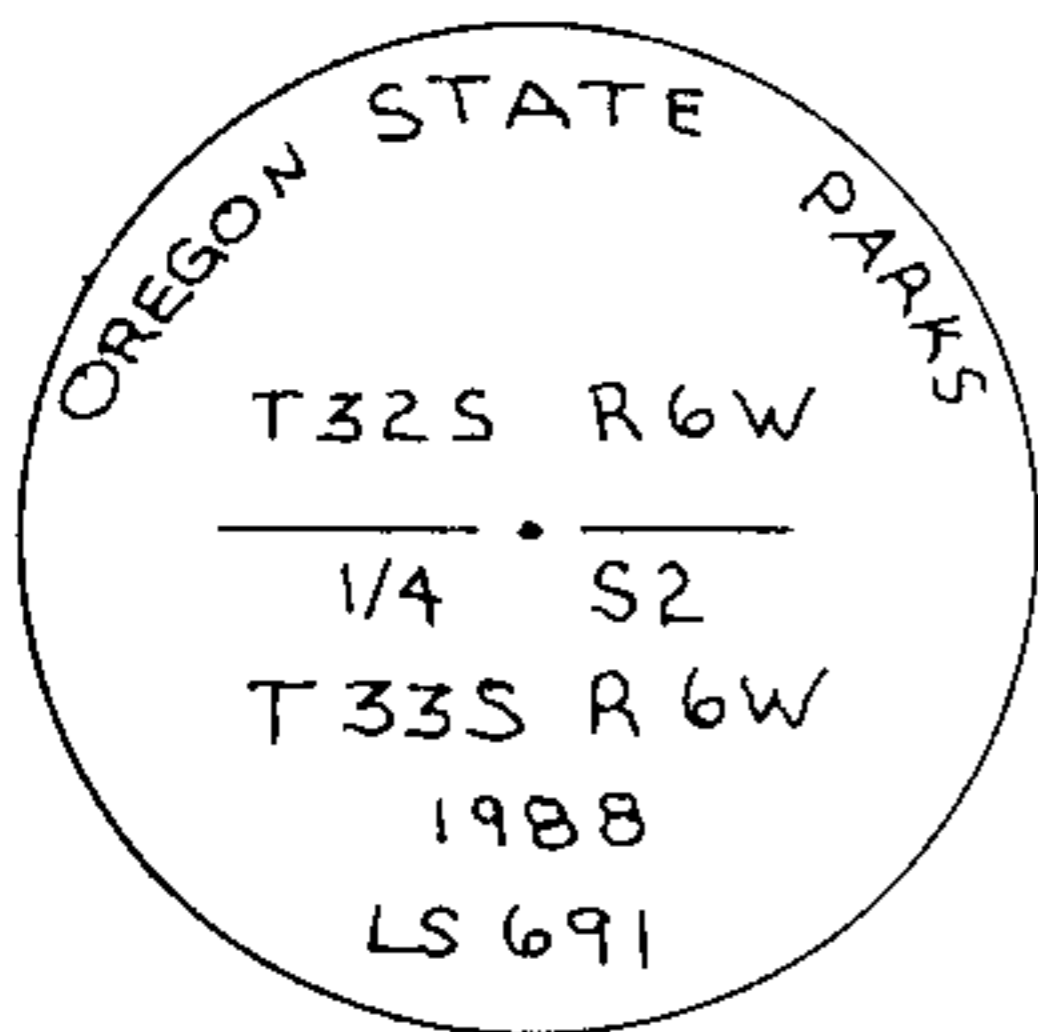
Previous Renewals/Surveys, etc.

Set by Hyde & Gardner, contract #54, 1855, single proportioned by Brandt in 1973, CS 149-21.

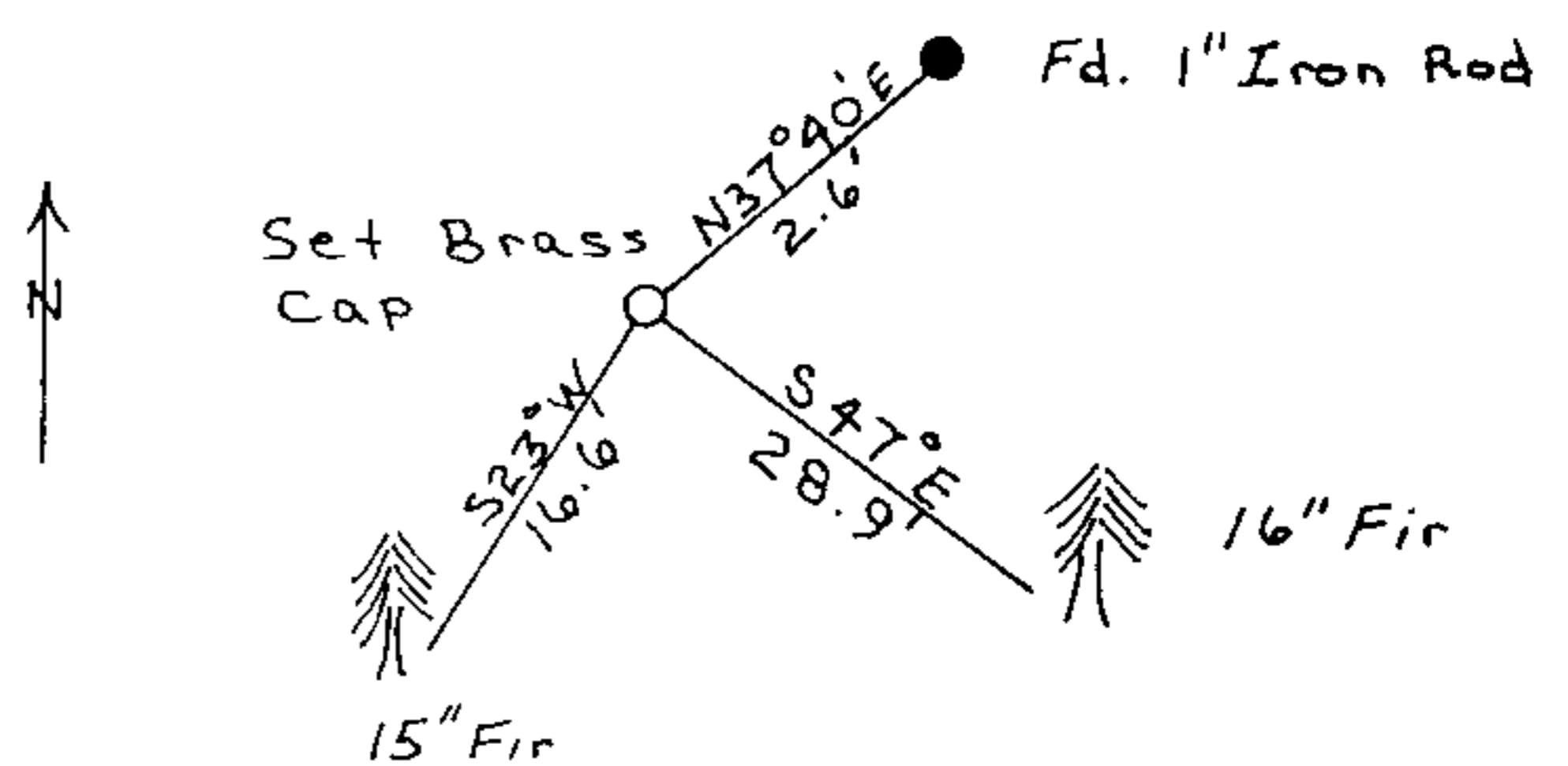
Monument(s) & Accessories Found: (Condition and Source)

No original evidence found; Found 1" iron rod set by Brandt in 1973 and references as per renewals T33S, R6W, #46 and T32S, R6W, #129. I do not agree with the method of proportioning used to set this corner and I therefore set a new monument for the corner.

Monument Detail



Sketch



Monument Set (Procedures and Description)

Set 1"X30" iron post with 2 3/8" brass cap at single proportioned distance between the North Standard 1/4 corner Section 4 and the standard corner Sections 35 and 36 on a latitudinal curve.

New Accessories

New measurements to existing bearing trees: A 16" Fir bears S47°E, 28.9 ft. with healed blaze; A 15" Fir bears S23°W, 16.6 ft. with healed blaze; A 1" iron rod bears N37°40'E, 2.6 ft. Set orange carsonite post with decal marked "PROPERTY BOUNDRY-STATE PARK LAND BEHIND THIS SIGN", 2 ft. southeast.

Location & Comments

References by hand compass and chain.

Compass Declination 20°

Firm/Agency Oregon State Parks & Recreation Div.

Address 525 Trade Street SE Salem OR 97310

Party Chief R. Hill

Notes H. Hanson

Witness L. Boge

Seal

REGISTERED  
PROFESSIONAL  
LAND SURVEYOR

*John E. Hollingsworth*

OREGON  
JULY 9, 1988  
JOHN E. HOLLINGSWORTH  
691

#56 X T. 33-6  
#177 + T. 32-6

File No. 63/62-208

FILED

TF

DEC 22 1988

OREGON CORNER RESTORATION FORM

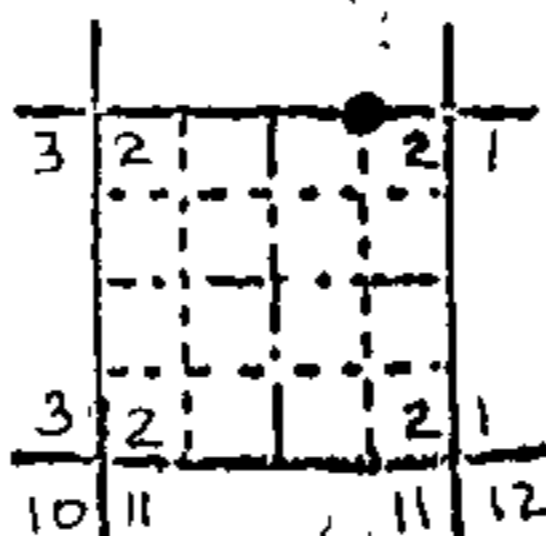
Section 2 Township 33S Range 6W

COUNTY SURVEYOR  
DOUGLAS COUNTY, ORE.

County Douglas  
Josephine Date 8/22/88

Corner Designation

E 1/16 Standard  
Corner Section  
2 Only



- Condition Report Only
- Not Found
- Renewed
- Unrecorded
- Surveyed In
- Referenced Out

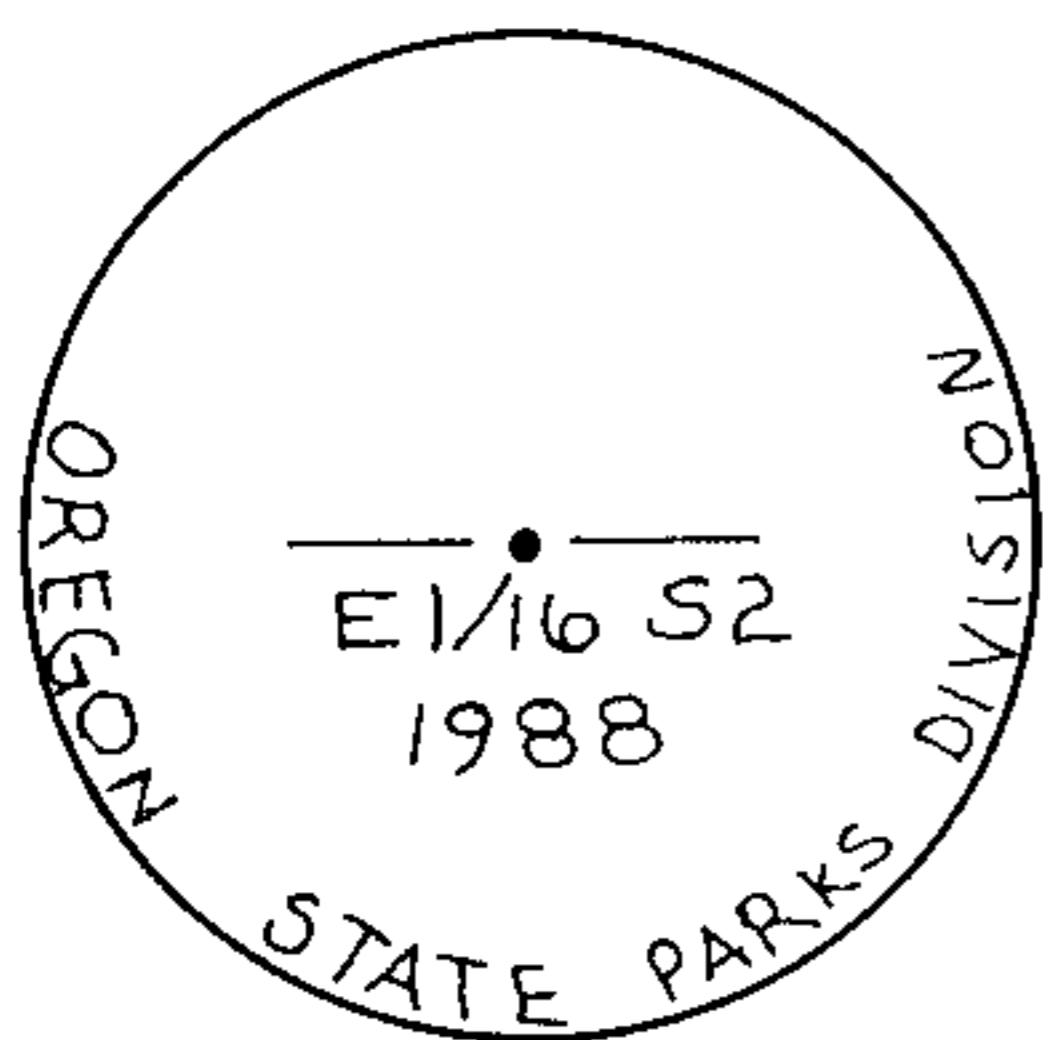
Previous Renewals/Surveys, etc.

None

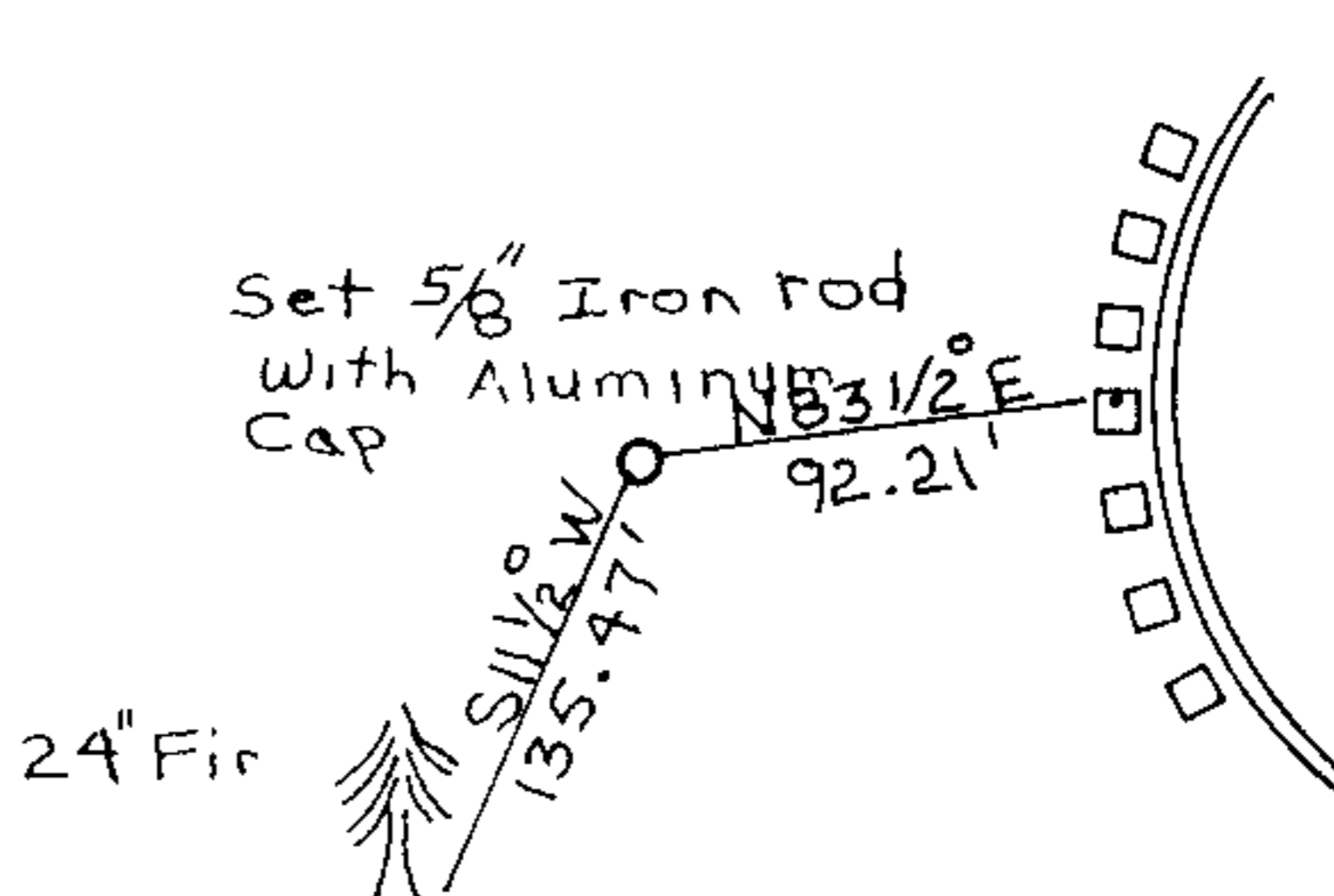
Monument(s) & Accessories Found: (Condition and Source)

None

Monument Detail



Sketch



Monument Set (Procedures and Description)

Set 5/8" x 30" Iron Rod with aluminum cap 26" in ground at single proportioned position.

New Accessories

A "PK" nail in top of guardrail spacer bears N83 1/2 E, 92.21 ft;  
A 24" fir bears S 11 1/2 W, 135.47 ft. to 2 finish nails side and center marked, "E 1/16 S2SCBT,";

Set orange carsonite post with decal marked "Property Boundary State Park Land Behind This Sign" 2 ft south

Location & Comments

References by hand compass and chain

Compass Declination 20°

Firm/Agency Oregon State Parks & Recreation Div.

Address 525 Trade Street SE Salem OR 97310

Party Chief R. Hill

Notes H. Hanson

Witness L. Boge

Seal

REGISTERED PROFESSIONAL LAND SURVEYOR

*John E. Hollingsworth*

OREGON  
JULY 9, 1905  
JOHN E. HOLLINGSWORTH  
691

FILED

DEC 22 1988

OREGON CORNER RESTORATION FORM

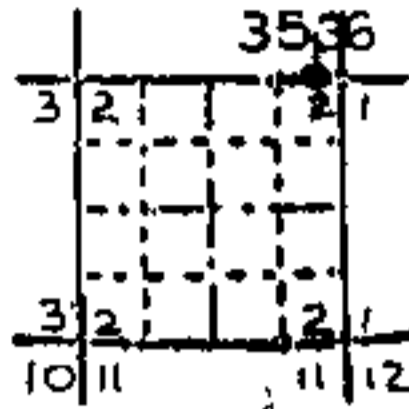
35,36 32 S  
Section 2 Township 33 S Range 6W  
Douglas  
County Josephine Date 6/23/88

COUNTY SURVEYOR  
DOUGLAS COUNTY, ORE

Corner Designation

35 | 36

Standard Corner



- Condition Report Only
- Not Found
- X Renewed
- Unrecorded
- Surveyed In
- Referenced Out

Previous Renewals/Surveys, etc.

Set by Hyde & Gardner, Con. #54, 1855; Renewed by Wenderoth 1955, Douglas County renewal 132SR6W #44, Powell, 1967, Ren. #111.

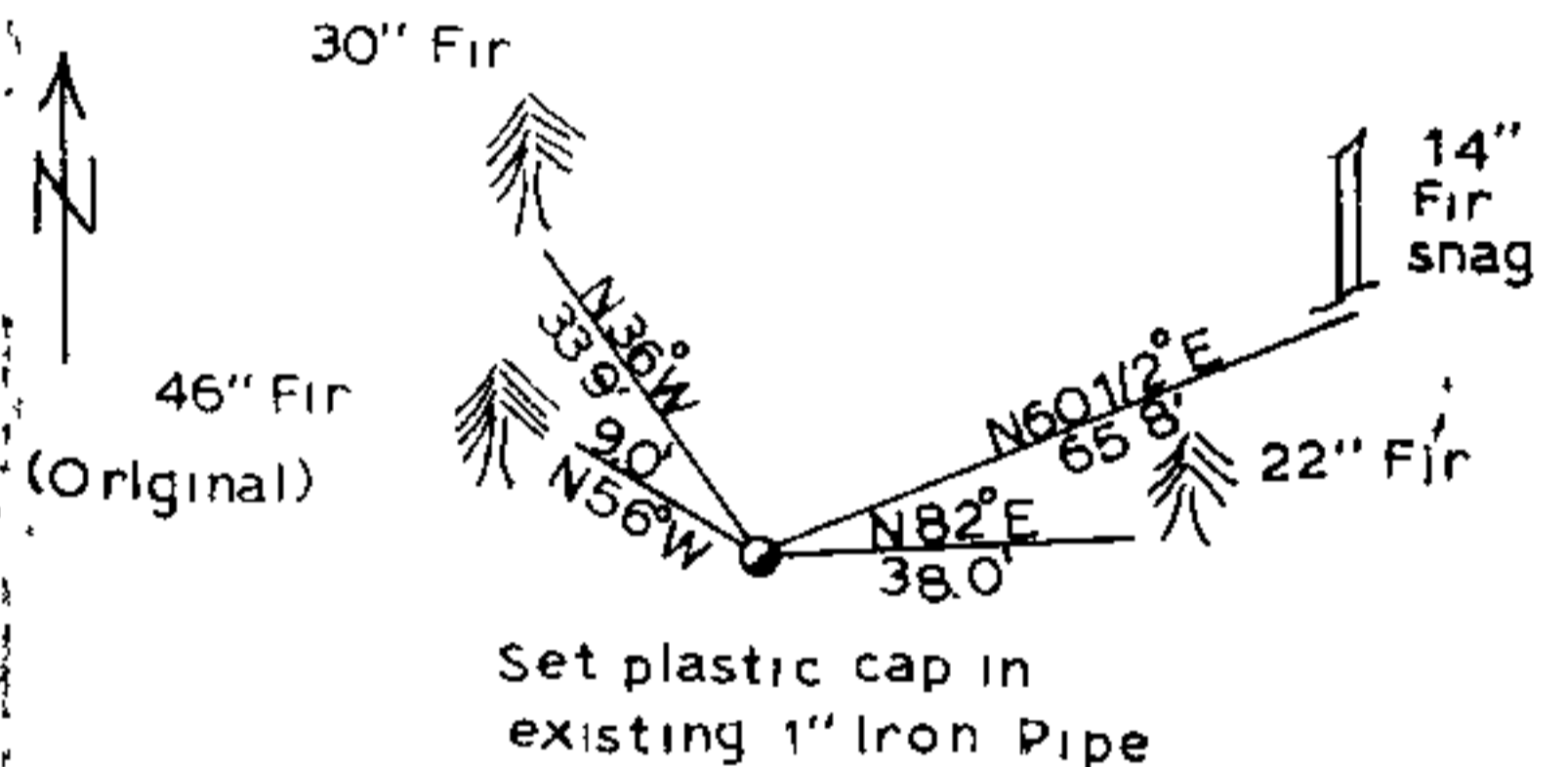
Monument(s) & Accessories Found: (Condition and Source)

Found 1" iron pipe projecting 6" above ground from which. a 46" fir bears N56°W (N40°W), 9.0 (9.2) ft to illegible scribe marks in partially healed blaze (original); NE original BT falls in a skid road; a 14" (18") fir snag bears N60 1/2°E, 65.8 ft with "36 BT" visible in partially healed double blaze; a 22" fir bears N82°E (N84°E), 38.0 (34.3) ft with healed blaze, a 30" fir bears N36°W (N33°50'W), 33.9 ft with healed blaze

Monument Detail



Sketch



Monument Set (Procedures and Description)

Set plastic cap in existing 1" iron pipe.

New Accessories

Set orange carsonite post with decal marked, "Property Boundary State Park Land Behind This Sign", 2 ft south

Location & Comments

References by theodolite and chain

Compass Declination 20°  
Firm/Agency Oregon State Parks & Recreation Div.

Address 525 Trade Street SE Salem OR 97310

Party Chief R. Hill

Notes R. Hill

Witness L. Boge

Seal

REGISTERED PROFESSIONAL LAND SURVEYOR

JOHN E. HOLLINGSWORTH  
691

3  
#57 T33-6 4  
#176 T32-6 4

OS File No. 63/62-2d

FILED

TF

DEC 22 1988

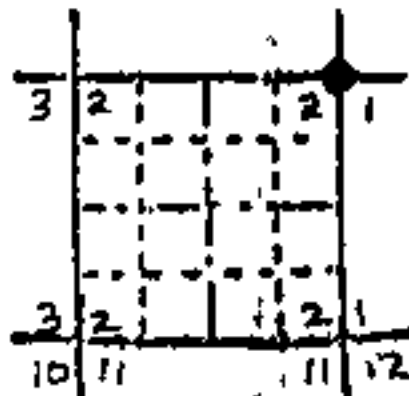
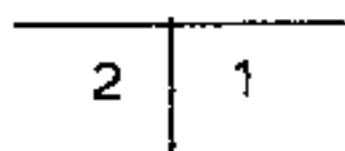
OREGON CORNER RESTORATION FORM

Section 2 Township 33 S Range 6W  
County Douglas Josephine Date 6/27/88

COUNTY SURVEYOR  
DOUGLAS COUNTY, ORE.

Corner Designation

Standard Corner



- Condition Report Only
- Not Found
- Renewed
- Unrecorded
- Surveyed In
- Referenced Out

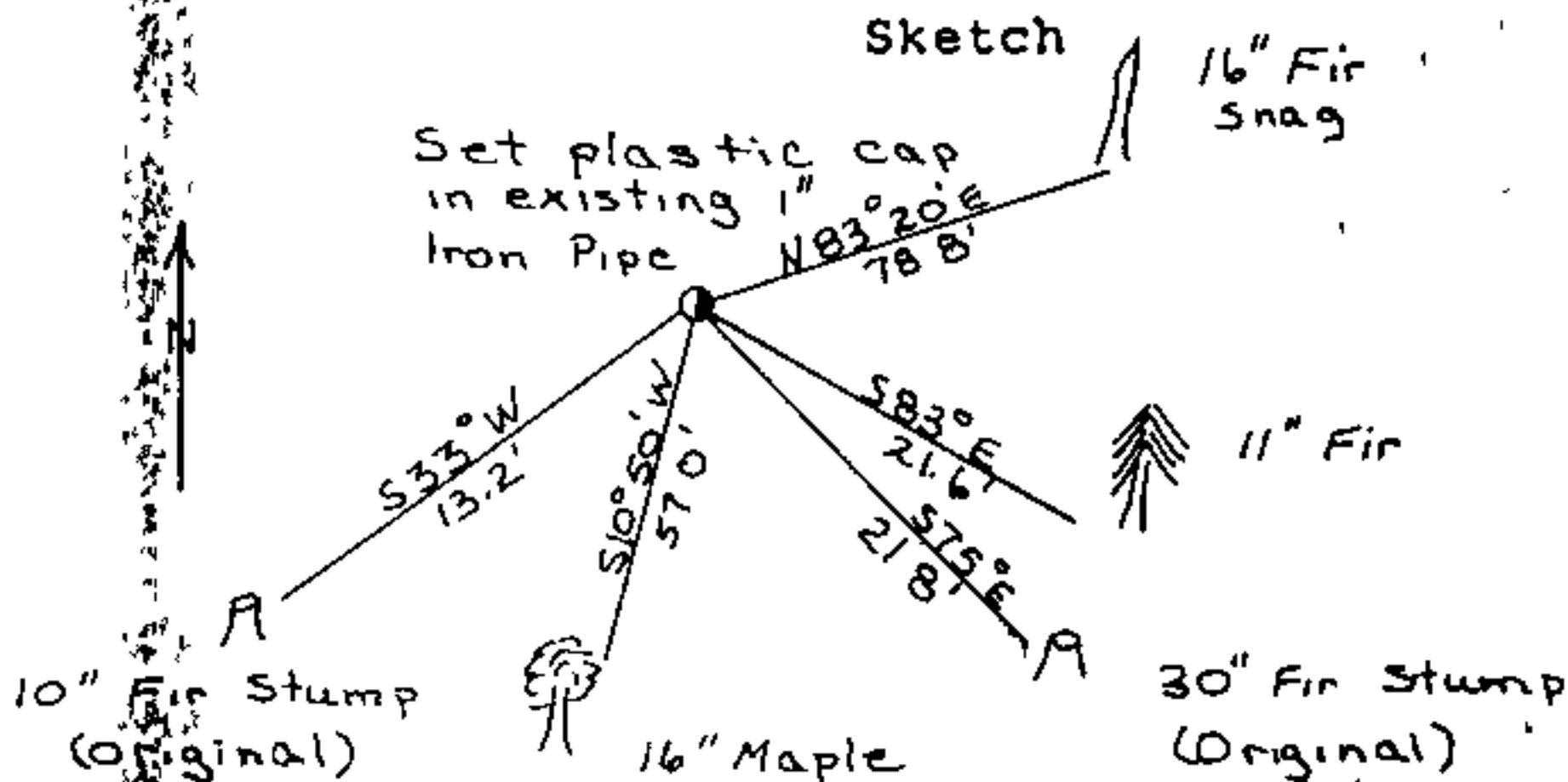
Previous Renewals/Surveys, etc.

Set by Hyde & Gardner, Con. #54, 1855; Renewed by Wenderoth, 1955, C.S. File 47/7.

Monument(s) & Accessories Found: (Condition and Source)

Found 1" iron pipe projecting 6" above ground from which: a 30" (15") fir stump bears S75°E, 21.8 ft with a badly decayed face and backcast, no marks visible (original); a 10" stump bears S33°W, 13.2 ft to face with illegible partial scribe marks (original), a 16" fir snag bears N83°20'E, 78.8 ft marked "S 1-2TS 8 BT"; a 16" maple bears S10°50'W, 57.0 ft with healed blaze.

Monument Detail



Monument Set (Procedures and Description)

Set plastic cap in 1" existing iron pipe.

New Accessories

A 11" fir bears S83°E, 21.6 ft marked "T33SR6WS1BT"; Set orange carsonite post with decal marked "Property Boundary State Park Land Behind This Sign" 2 ft SW.

Location & Comments

References by hand compass and chain

Compass Declination 20°

Firm/Agency Oregon State Parks & Recreation Div.

Address 525 Trade Street SE Salem OR 97310

Party Chief R. Hill

Notes R. Hill

Witness H. Hanson

Seal

REGISTERED PROFESSIONAL LAND SURVEYOR

*John E. Hollingsworth*

OREGON JULY 9, 1968 JOHN E. HOLLINGSWORTH 691

C.S. File No 63/62 2e

4  
#58 T33-6 +  
#175 T32-6 +

FILED

TF

OREGON CORNER RESTORATION FORM

DEC 22 1988

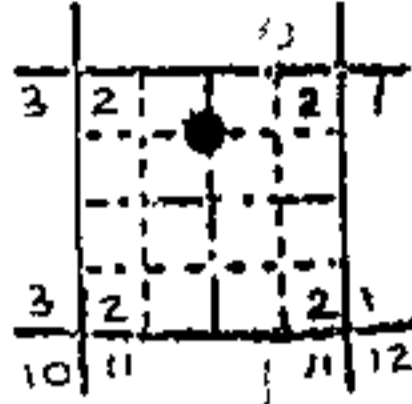
Section 2 Township 33S Range 6W

COUNTY SURVEYOR  
DOUGLAS COUNTY, OREG.

County Douglas Date 8/18/88

Corner Designation

C-N 1/16

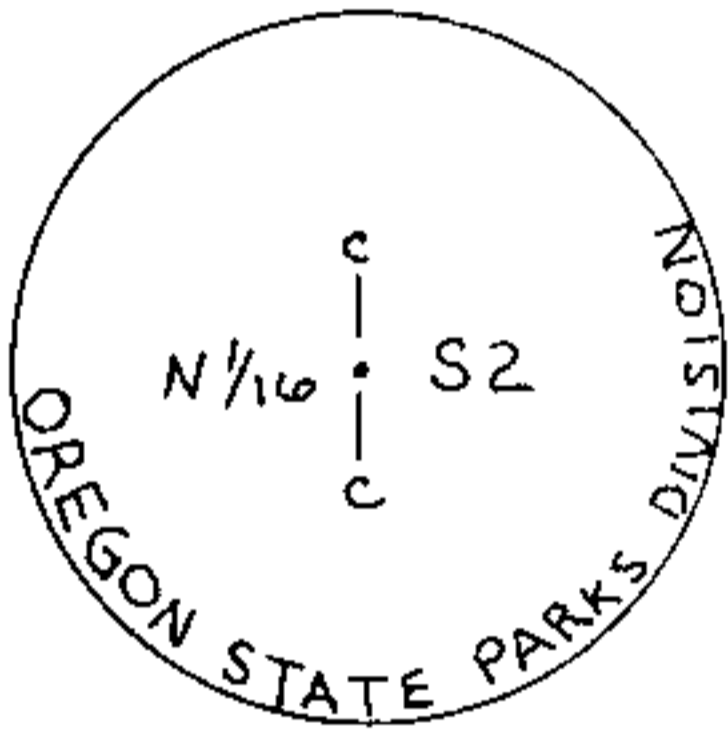


- Condition Report Only
- Not Found
- Renewed
- Unrecorded
- Surveyed In
- Referenced Out

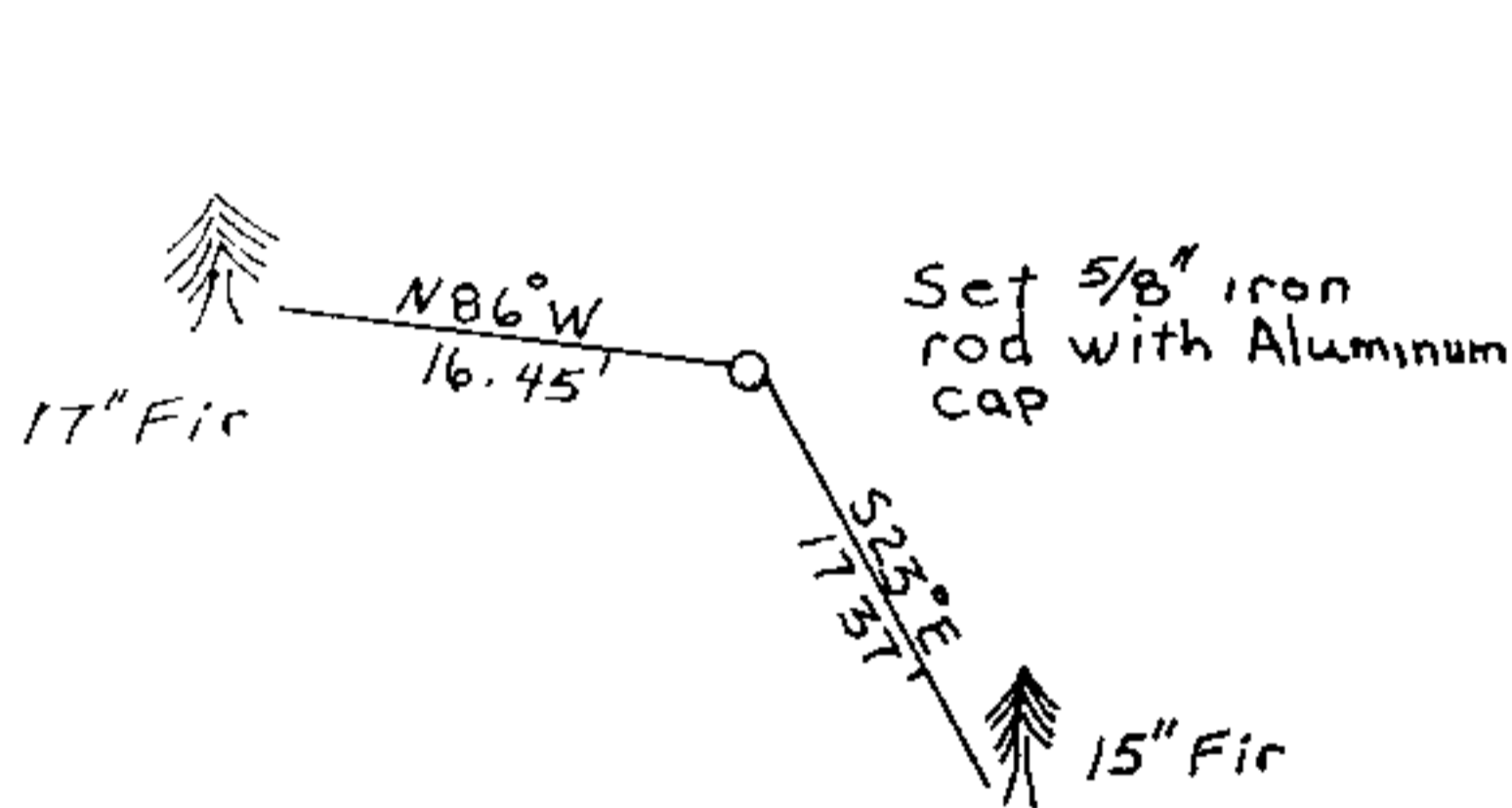
Previous Renewals/Surveys, etc.  
None

Monument(s) & Accessories Found: (Condition and Source)  
None

Monument Detail



Sketch



Monument Set (Procedures and Description)

Set 5/8" x 30" iron rod with 2" aluminum cap 26" in ground

New Accessories

A 15" fir bears S 23° E, 17.37 ft. to 2 finish nails side and center marked, "CN 1/16 S2BT";  
A 17" fir bears N 86° W, 16.45 ft. to 2 finish nails side and center marked "X BT"; set orange carsonite post marked, "Property Boundary State Park Land Behind This Sign" 2 ft east.

Location & Comments

References by hand  
compass and chain

Compass Declination 20°

Firm/Agency Oregon State  
Parks & Recreation Div.

Address 525 Trade Street SE  
Salem OR 97310

Party Chief R. Hill

Notes H. Hanson

Witness L. Boge

Seal

REGISTERED  
PROFESSIONAL  
LAND SURVEYOR

*John E. Hollingsworth*

OREGON  
JULY 9, 1988  
JOHN E. HOLLINGSWORTH  
691

FILED

TF

DEC 22 1988

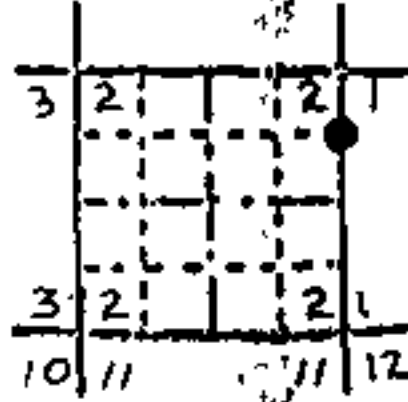
OREGON CORNER RESTORATION FORM

Section 2 Township 33 S Range 6 W  
County Douglas Josephine Date 8/16/88

COUNTY SURVEYOR  
DOUGLAS COUNTY, ORE.

Corner Designation

N 1/16 2 | 1

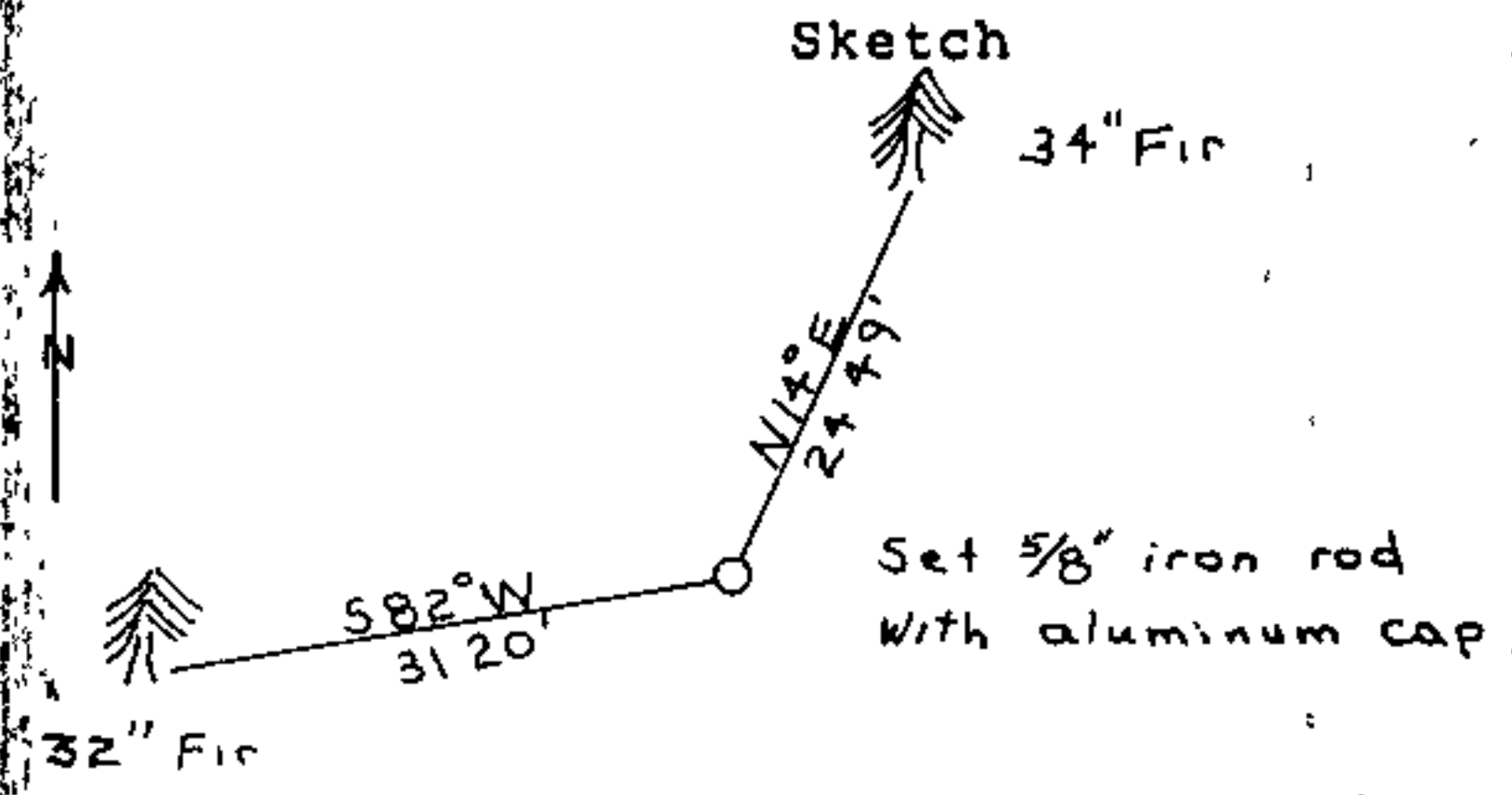
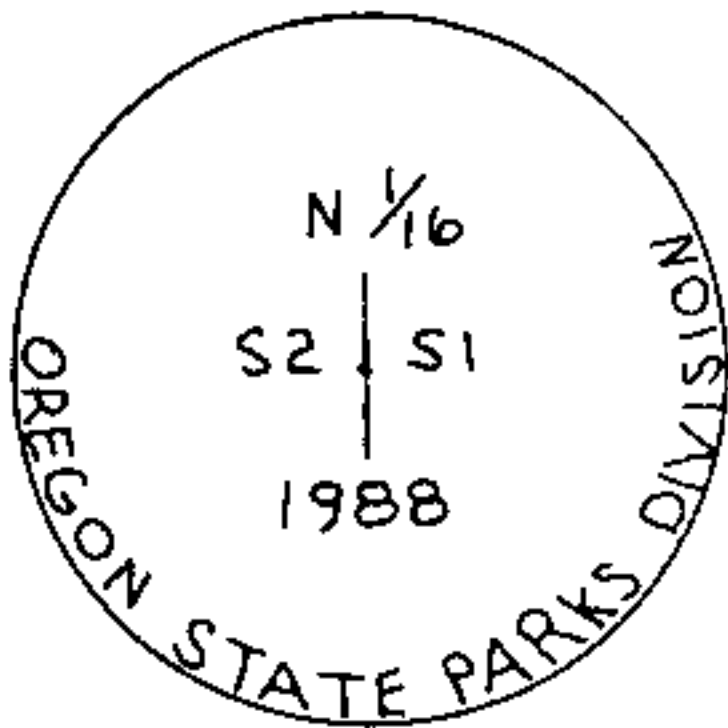


- Condition Report Only
- Not Found
- Renewed
- Unrecorded
- Surveyed In
- Referenced Out

Previous Renewals/Surveys, etc.  
None

Monument(s) & Accessories Found: (Condition and Source)  
None

Monument Detail



Monument Set (Procedures and Description)

5/8" x 30" iron rod with 2" aluminum cap 26" in ground

New Accessories

34" fir, bears N14°E, 24 49 ft. to 2 finish nails side & center marked, "N 1/16 S1 BT";  
32" fir, bears S82°W, 31.20 ft. to 2 finish nails side & center marked, "N 1/16 S2 BT";  
Set orange carsonite post with decal marked, "Property Boundary State Park Land Behind This Sign" 2 ft. west.

Location & Comments

References by hand  
compass and chain

Compass Declination 20°  
Firm/Agency Oregon State  
Parks & Recreation Div.  
Address 525 Trade Street SE  
Salem OR 97310

Party Chief R. Hill  
Notes H. Hanson  
Witness L. Boge

Seal

REGISTERED  
PROFESSIONAL  
LAND SURVEYOR

*John E. Hollingsworth*  
OREGON  
JULY 9, 1985  
JOHN E. HOLLINGSWORTH  
691

FILED

TF

OREGON CORNER RESTORATION FORM

DEC 22 1988

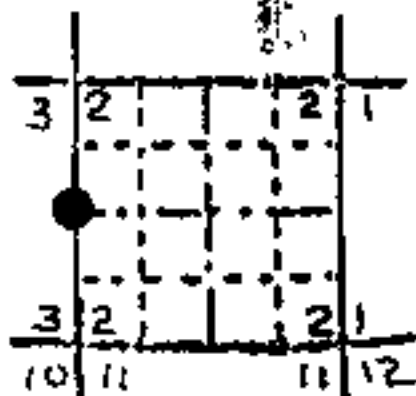
Section 2 Township 33 S Range 6W

COUNTY SURVEYOR  
DOUGLAS COUNTY, ORE.

County Douglas Date 7/13/88

Corner Designation

Quarter  
Corner 3 | 2



- Condition Report Only
- Not Found
- Renewed
- Unrecorded
- Surveyed In
- Referenced Out

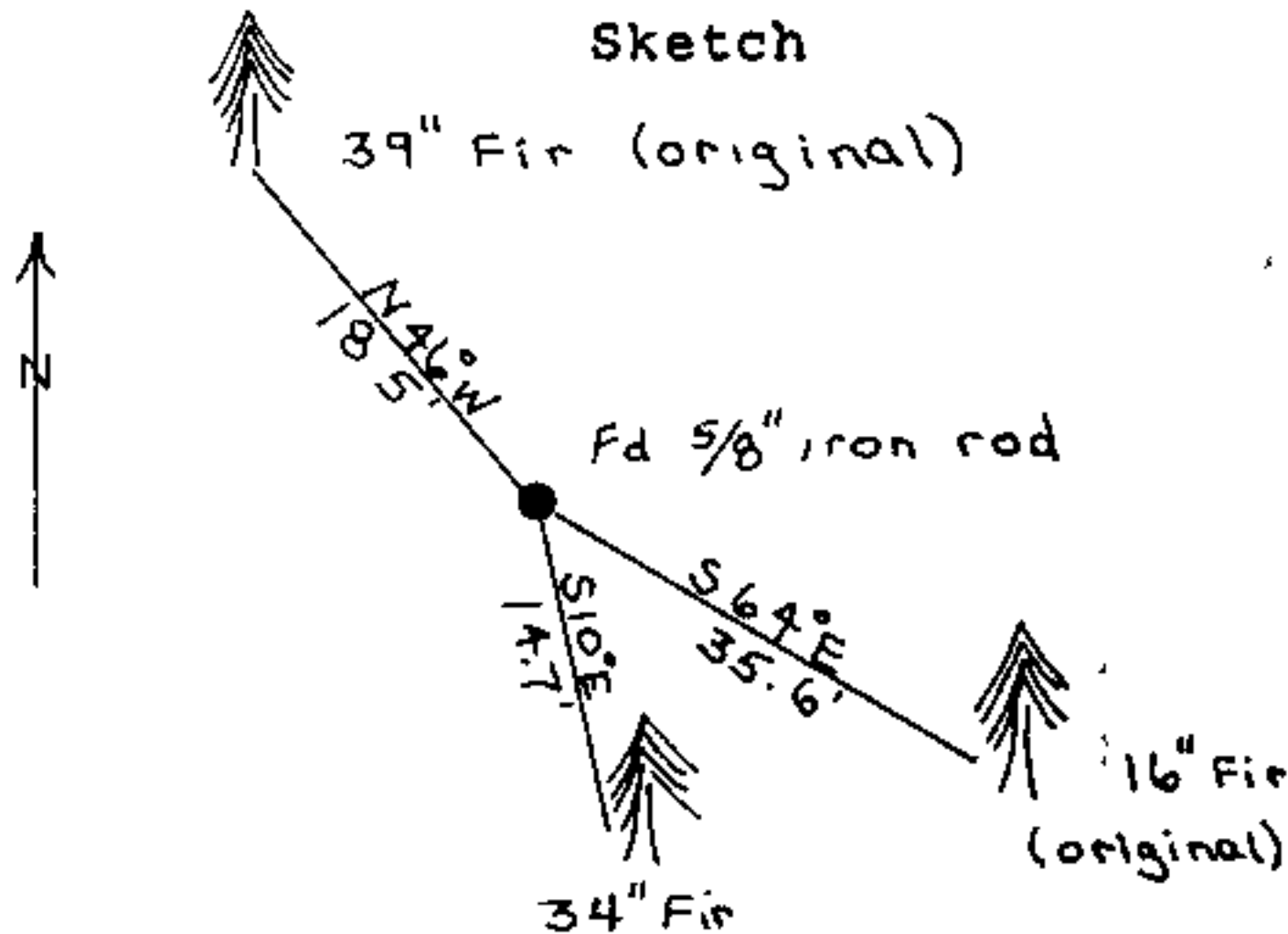
Previous Renewals/Surveys, etc.

Renewed by County 1967

Monument(s) & Accessories Found: (Condition and Source)

Found 5/8" (1/2") iron rod firmly set projecting 16" above ground from which: a 16" (5") fir bears S64°E, 35.6 ft slope to face 32.0 ft horz. to center with healed blaze (original); a 39" (16") fir bears N46°W, 18.5 ft to face with illegible scribe marks in opened blaze (original); a 34" fir bears S10°E, 14.7 ft with healed blaze (1967 BT).

Monument Detail



Monument Set (Procedures and Description)

None

New Accessories

None

Location & Comments

References by hand  
compass and chain

Compass Declination 20°

Firm/Agency Oregon State  
Parks & Recreation Div.

Address 525 Trade Street SE  
Salem OR 97310

Party Chief R Hill

Notes R. Hill

Witness L. Boge

Seal

REGISTERED  
PROFESSIONAL  
LAND SURVEYOR

*John E. Hollingsworth*

OREGON  
JULY 9, 1888  
JOHN E. HOLLINGSWORTH  
691

7 ✓

C.S. File No 63/62-2h

FILED

DEC 22 1988

OREGON CORNER RESTORATION FORM

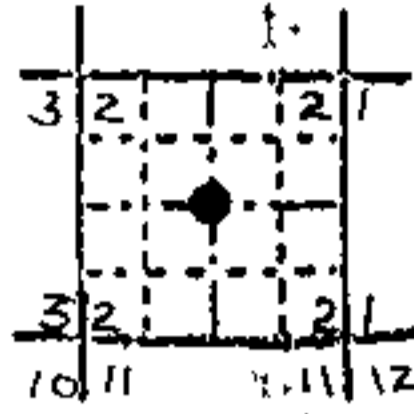
Section 2 Township 33 S Range 6W

COUNTY SURVEYOR  
DOUGLAS COUNTY, ORE.

County Douglas Date 8/17/88

Corner Designation

C 1/4



- Condition Report Only
- Not Found
- Renewed
- Unrecorded
- Surveyed In
- Referenced Out

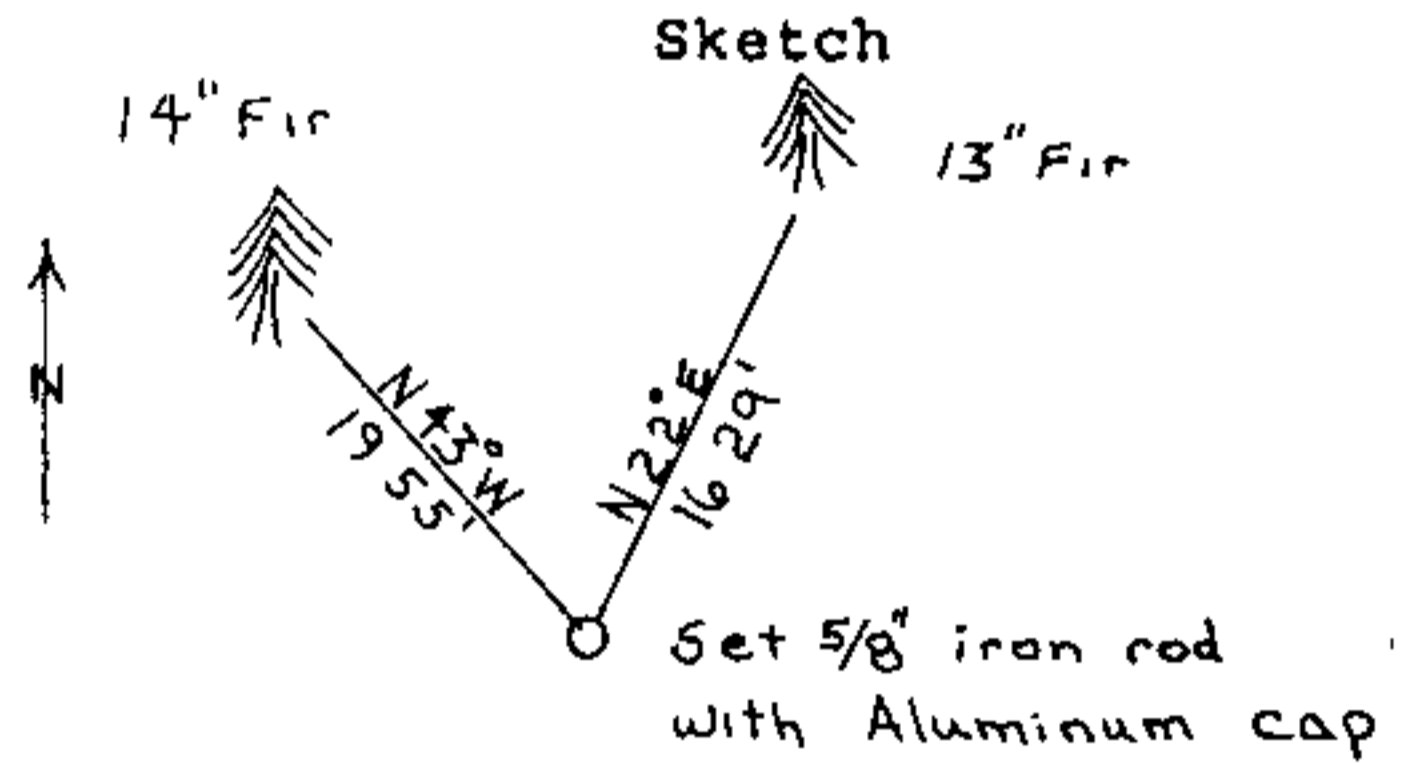
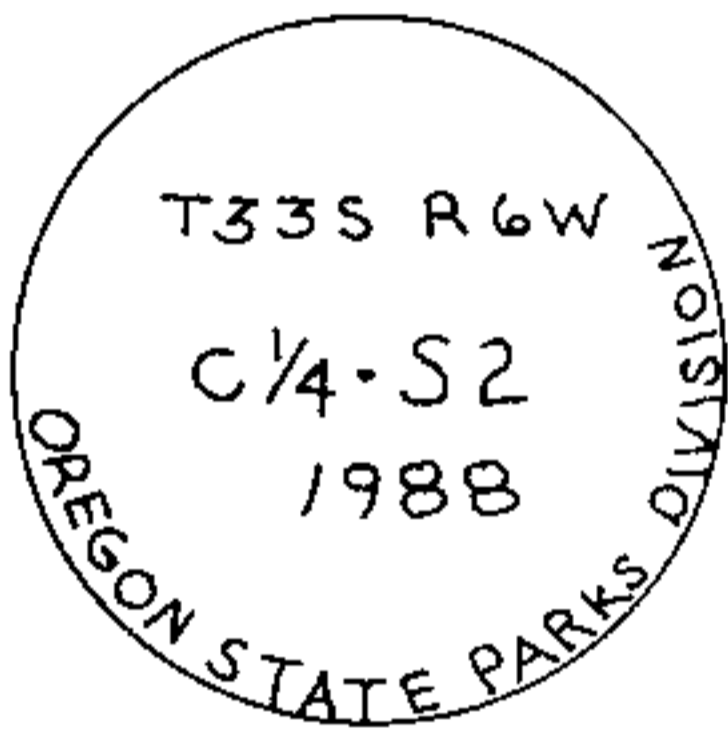
Previous Renewals/Surveys, etc.

None

Monument(s) & Accessories Found: (Condition and Source)

None

Monument Detail



Monument Set (Procedures and Description)

Set 5/8"x30" iron rod with aluminum cap 26" in ground.

New Accessories

- A 13" fir, bears N22°E, 16.29 ft to 2 finish nails side & center, marked "XBT";
- A 14" fir, bears N43°W, 19.55 ft to 2 finish nails side & center, marked "C 1/4 S2BT".
- Set orange carsonite with decal marked "Property Boundary State Park Land Behind This Sign", 2 ft NE.

Location & Comments

References by hand  
compass and chain

Compass Declination 20°

Firm/Agency Oregon State  
Parks & Recreation Div.

Address 525 Trade Street SE  
Salem OR 97310

Party Chief R. Hill

Notes H. Hanson

Witness L. Boge

Seal

REGISTERED  
PROFESSIONAL  
LAND SURVEYOR

*John E. Hollingsworth*

OREGON  
JULY 8, 1988  
JOHN E. HOLLINGSWORTH  
691

8  
#59 +

63/62-2I ✓

FILED TF

DEC 22 1988

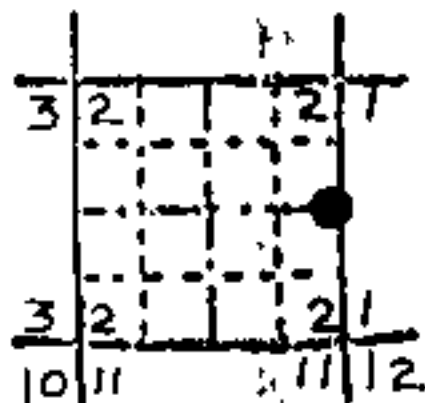
OREGON CORNER RESTORATION FORM

Section 2 Township 33 S Range 6W  
County Douglas Josephine Date 8/16/88

COUNTY SURVEYOR  
DOUGLAS COUNTY, ORE.

Corner Designation

Quarter Corner 2 | 1



- Condition Report Only
- Not Found
- Renewed
- Unrecorded
- Surveyed In
- Referenced Out

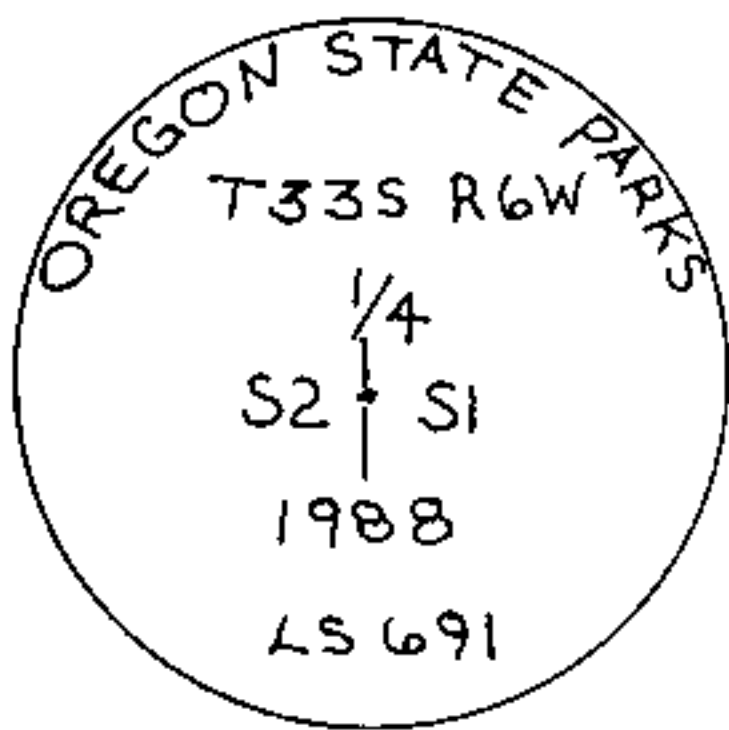
Previous Renewals/Surveys, etc.

Set by Lake & Hyde, Con. #54, 1855; single proportioned by Thompson, 1962, Jos. Co. #34-62, Doug. Co. #51/171

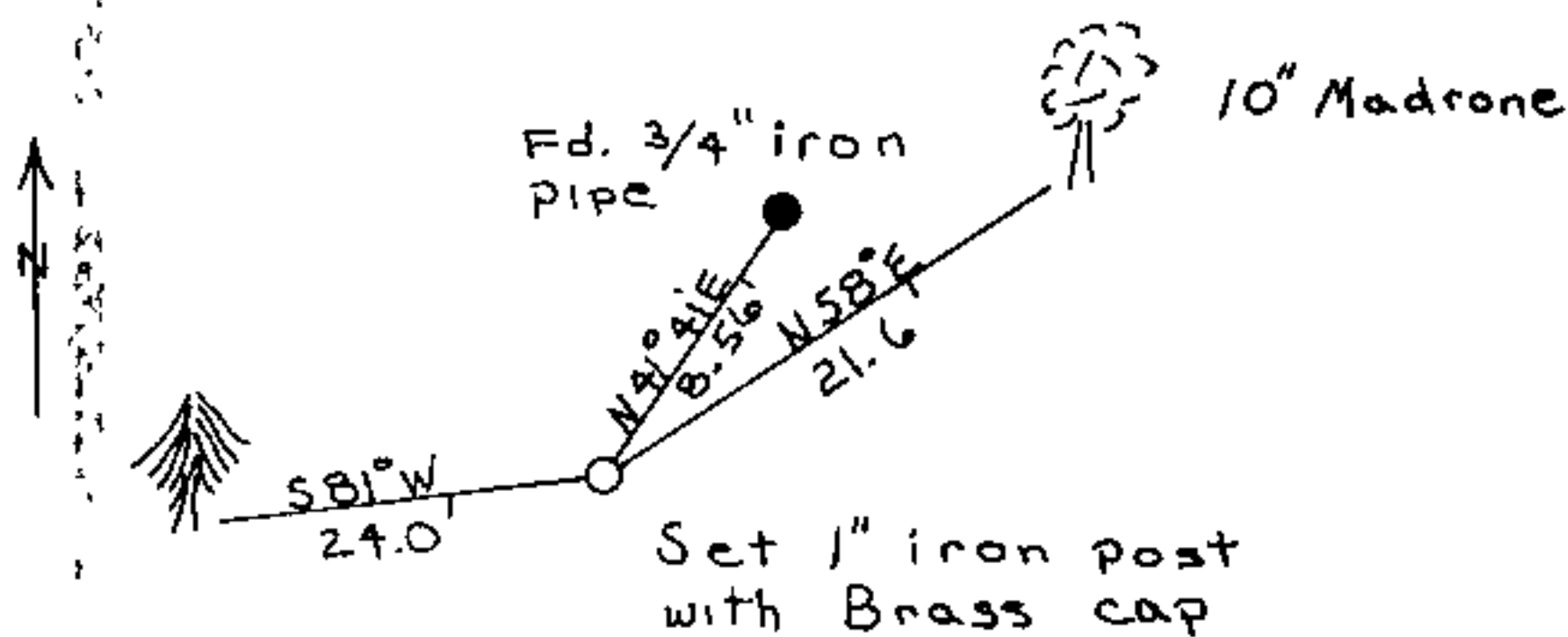
Monument(s) & Accessories Found: (Condition and Source)

Found Thompson 3/4" iron pipe and BT's but I set a new 1/4 corner monument as Thompson's iron pipe is about 8.5 ft out of position.

Monument Detail



Sketch



Monument Set (Procedures and Description)

Set 1"x30" iron post 26" in ground with 2 3/8" brass cap at single proportioned position

New Accessories

New measurements to existing BT's: A 10" Madrone bears N58°E, 21.6 ft with illegible scribe marks in partially healed blaze; a 32" fir bears S81°W, 24.0 ft to center with healed blaze, a 3/4" iron pipe bears N41°41"E, 8.56 ft. Set orange carsonite post with decal marked "Property Boundary State Park Land Behind This Sign", 2 ft west.

Location & Comments

References by hand compass and chain

Compass Declination 20°

Firm/Agency Oregon State Parks & Recreation Div.

Address 525 Trade Street SE Salem OR 97310

Party Chief R. Hill

Notes H. Hanson

Witness L. Boge

Seal

REGISTERED PROFESSIONAL LAND SURVEYOR

*John E. Hollingsworth*

OREGON JULY 9, 1983 JOHN E. HOLLINGSWORTH 691

9 #604

63/62J

FILED

TF

DEC 22 1988

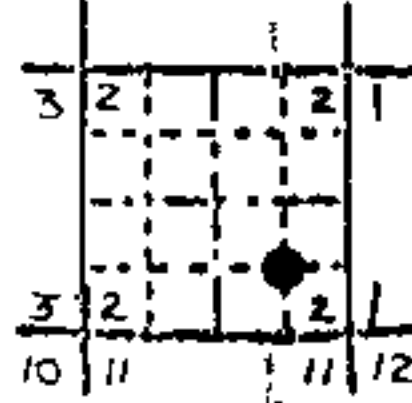
OREGON CORNER RESTORATION FORM

Section 2 Township 33 S Range 6W  
County Douglas Josephine Date 8/17/88

COUNTY SURVEYOR  
DOUGLAS COUNTY, ORE.

Corner Designation

SE 1/16



- Condition Report Only
- Not Found
- Renewed
- Unrecorded
- Surveyed In
- Referenced Out

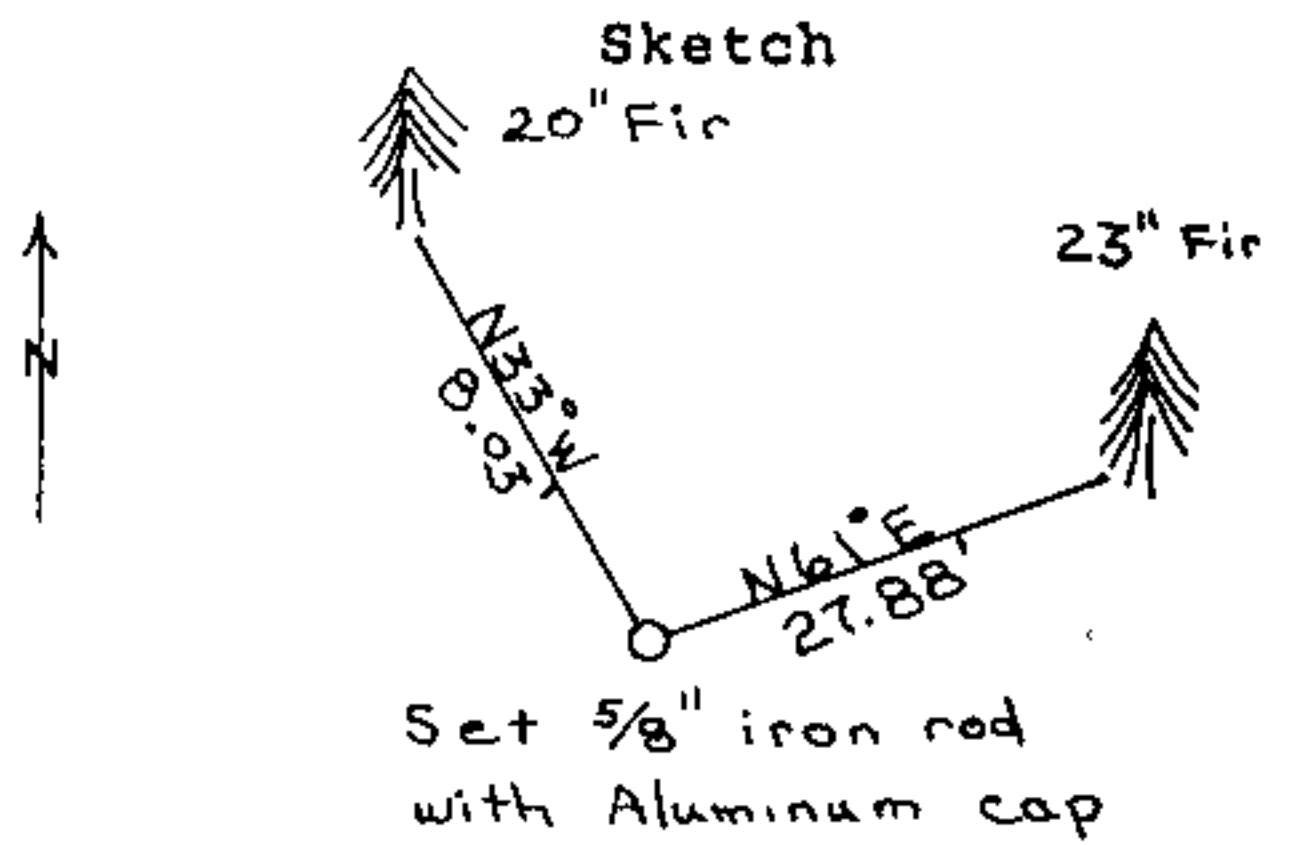
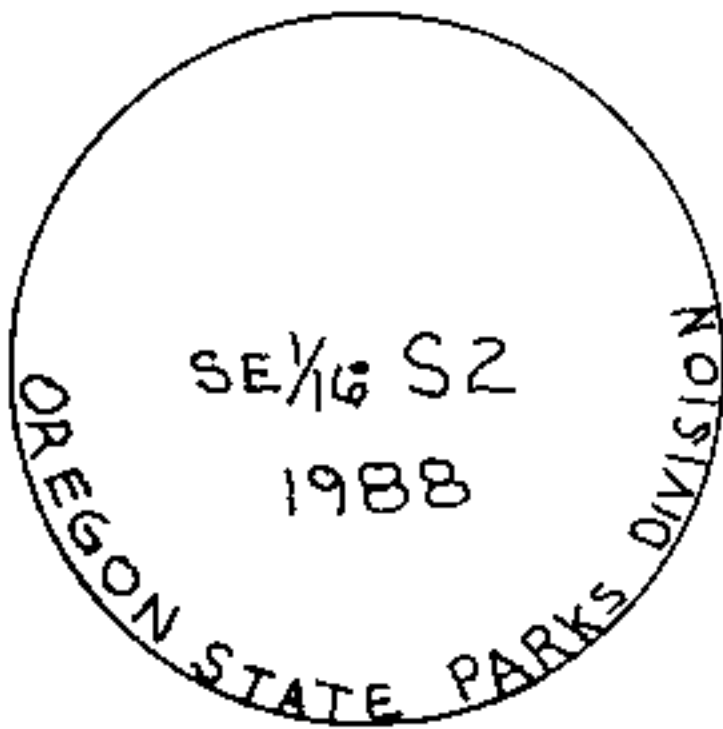
Previous Renewals/Surveys, etc.

None

Monument(s) & Accessories Found: (Condition and Source)

None

Monument Detail



Monument Set (Procedures and Description)

Set 5/8"x30" iron rod with aluminum cap 26" in ground.

New Accessories

A 23" fir bears N61°E, 27.88 ft to 2 finish nails side & center marked "SE1/16 S2BT";

A 20" fir bears N33°W, 8.03 ft to 2 finish nails side & center marked "XBT".

Set orange carsonite post with decal marked, "Property Boundary State Park Land Behind This Sign", 2' east.

Location & Comments

References by hand  
compass and chain

Compass Declination 20°

Firm/Agency Oregon State  
Parks & Recreation Div.

Address 525 Trade Street SE  
Salem OR 97310

Party Chief R. Hill

Notes H. Hanson

Witness L. Boge

Seal

REGISTERED  
PROFESSIONAL  
LAND SURVEYOR

OREGON  
JULY 9, 1888  
JOHN E. HOLLINGSWORTH  
691

*John E. Hollingsworth*

10

CS 63/62-K

FILED

TF

DEC 22 1988

OREGON CORNER RESTORATION FORM

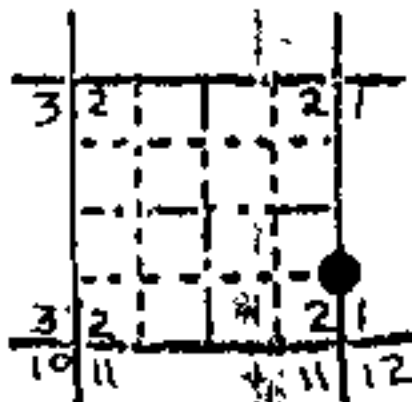
Section 2 Township 33 S Range 6W

COUNTY SURVEYOR  
DOUGLAS COUNTY, ORE.

County Josephine Date 8/16/88

Corner Designation

S 1/16 2 | 1



- Condition Report Only
- Not Found
- Renewed
- Unrecorded
- Surveyed In
- Referenced Out

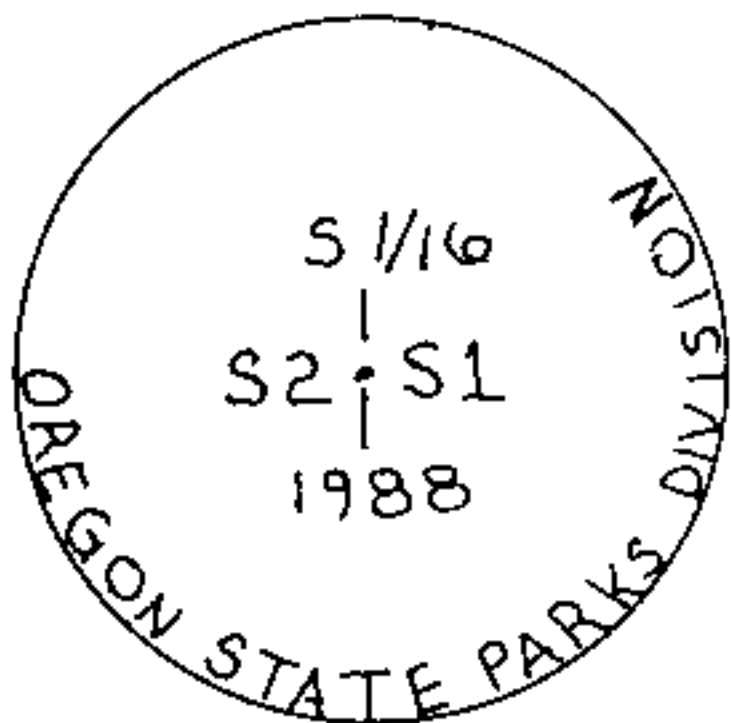
Previous Renewals/Surveys, etc.

None

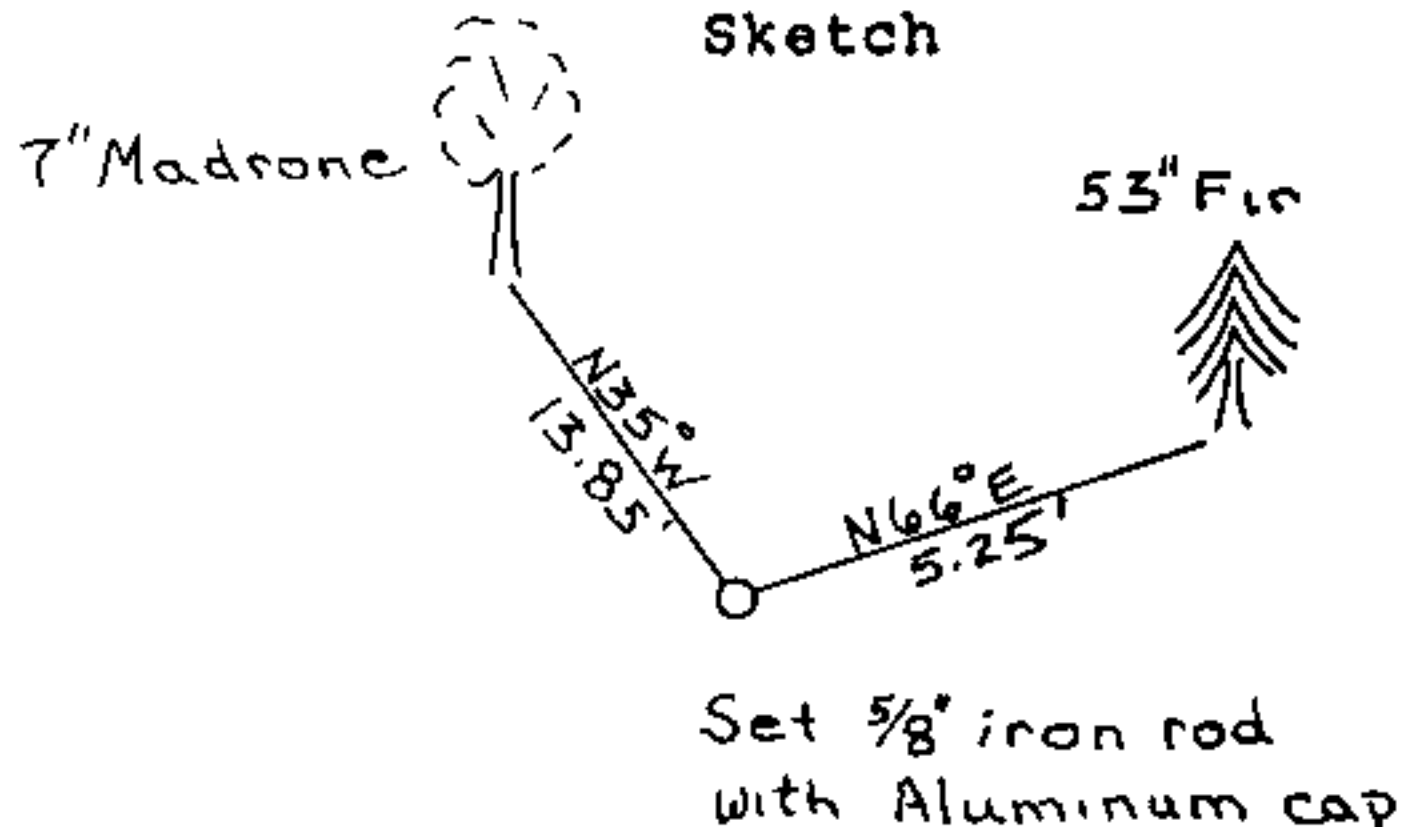
Monument(s) & Accessories Found: (Condition and Source)

None

Monument Detail



Sketch



Monument Set (Procedures and Description)

Set 5/8" x30" IR with aluminum cap 26" in ground.

New Accessories

A 53" fir bears N66°E, 5.25 ft to 2 nails side and center, marked "S 1/16 S1BT",  
 A 7" madrone bears N35°W, 13.85 ft to 2 nails side and center, maked "S1/16 S2BT";  
 Set orange carsonite marked "Property Boundary State Park Land Behind This Sign" 2 ft west.

Location & Comments

References by hand  
compass and chain

Compass Declination 20°

Firm/Agency Oregon State  
Parks & Recreation Div.

Address 525 Trade Street SE  
Salem OR 97310

Party Chief R Hill

Notes H. Hanson

Witness L. Boge

Seal

REGISTERED  
PROFESSIONAL  
LAND SURVEYOR

*John E. Hollingsworth*

OREGON  
JULY 9, 1988  
JOHN E. HOLLINGSWORTH  
691

FILED

DEC 22 1988

OREGON CORNER RESTORATION FORM

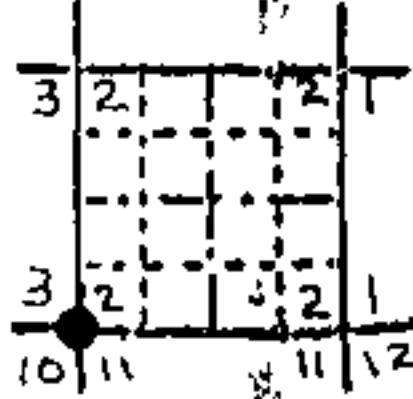
Section 2 Township 33 S Range 6W

COUNTY SURVEYOR  
DOUGLAS COUNTY, ORE.

County Douglas Josephine Date 7/7/88

Corner Designation

3 | 2  
---  
10 | 11



- Condition Report Only
- Not Found
- Renewed
- Unrecorded
- Surveyed In
- Referenced Out

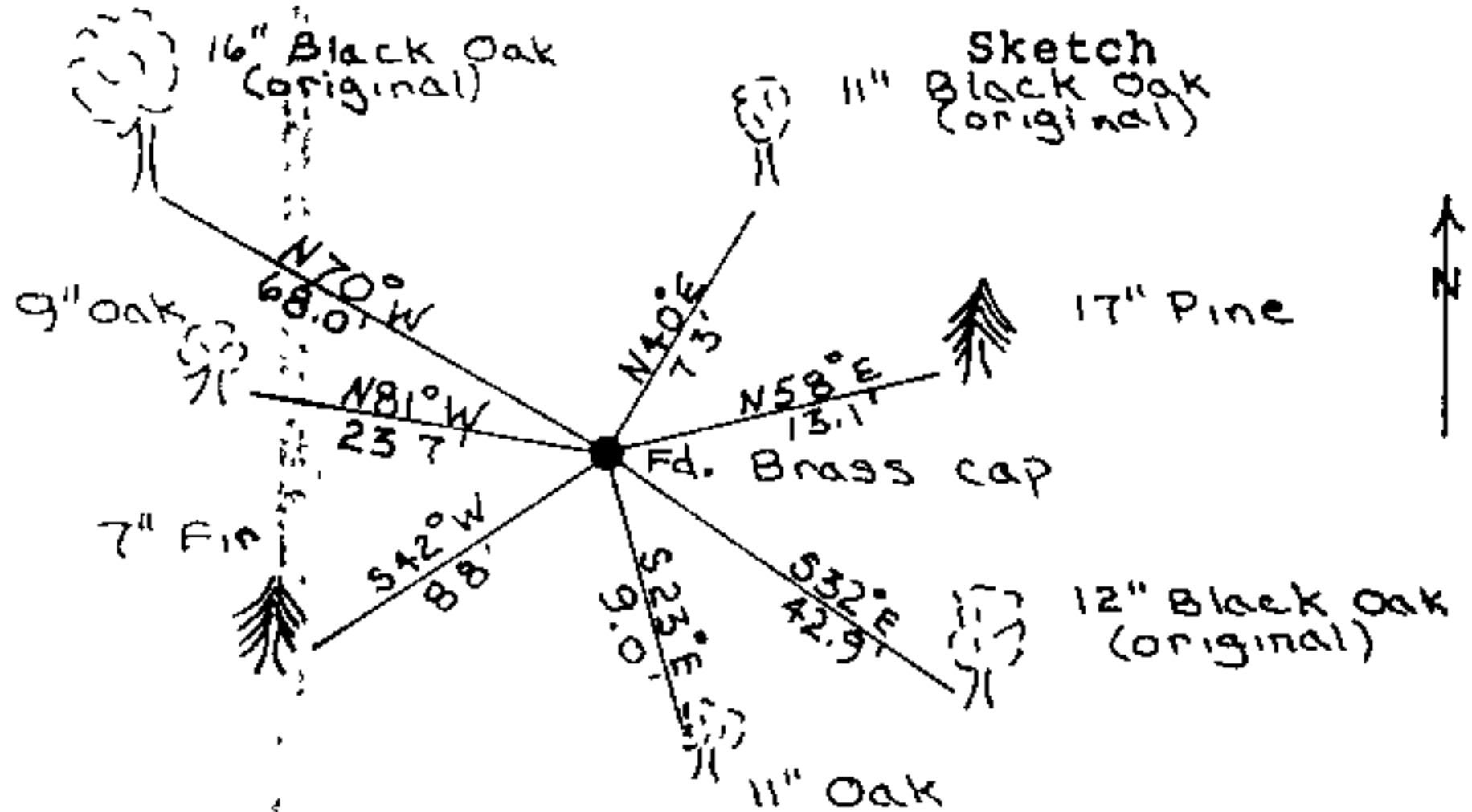
Previous Renewals/Surveys, etc.

Set by Lake & Hyde, contract #54, 1855, renewed by county, 1967.

Monument(s) & Accessories Found: (Condition and Source)

Found 1" iron pipe in rock mound firmly set projecting 16" above ground from which bears original BT's: a 11"(3") Black oak bears N40°E, 7.3 ft to rotten face in partially healed blaze, a 12" (4") Black oak bears S32°E (S35°E), 42.9 ft to rotten face in partially healed blaze; no evidence of SW BT; a 16" (6") Black oak bears N70°W (N75°W), 68.0 (66.0) to rotten face in partially healed blaze; BT's of recent origin; a 17" pine bears N58°E (N63°1), 13.1 ft to face with healed dbl. blaze; a 11" oak bears S23°E, 9.0 ft to healed blaze; a 7" fir bears S42°W, 8.8 ft with healed dbl. blaze; a 9" oak bears N81°W, 23.7 ft with healed dbl. blaze.

Monument Detail



Monument Set (Procedures and Description)

None

New Accessories

None

Location & Comments

References by hand  
compass and chain

Compass Declination 20°

Firm/Agency Oregon State  
Parks & Recreation Div.

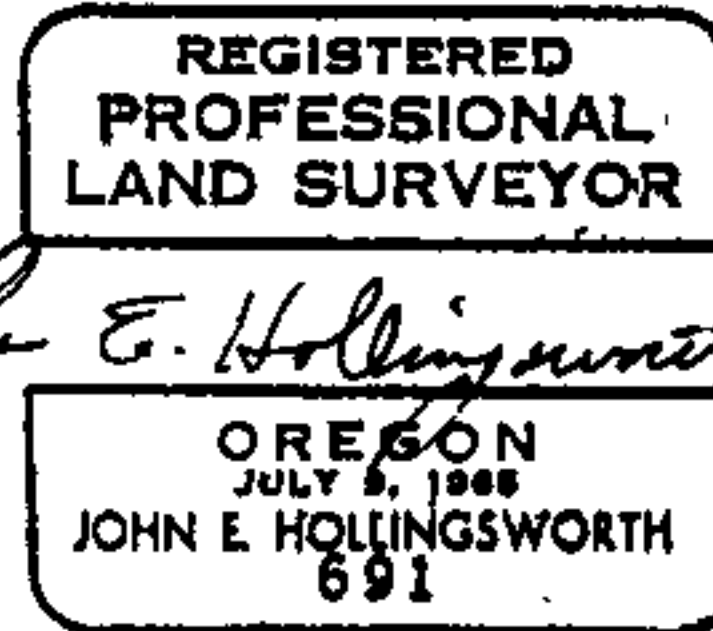
Address 525 Trade Street SE  
Salem OR 97310

Party Chief R. Hill

Notes R. Hill

Witness L. Boge, H. Hanson

Seal



CS File No 63/62-M

FILED

TF

OREGON CORNER RESTORATION FORM

DEC 22 1988

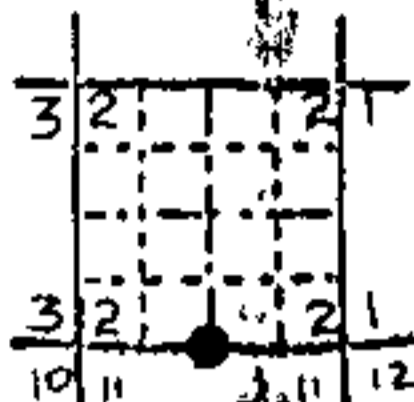
Section 2 Township 33S Range 6W

COUNTY SURVEYOR  
DOUGLAS COUNTY, ORE.

County Douglas Josephine Date 7/5/88

Corner Designation

Quarter 2  
Corner 11



- Condition Report Only
- Not Found
- Renewed
- Unrecorded
- Surveyed In
- Referenced Out

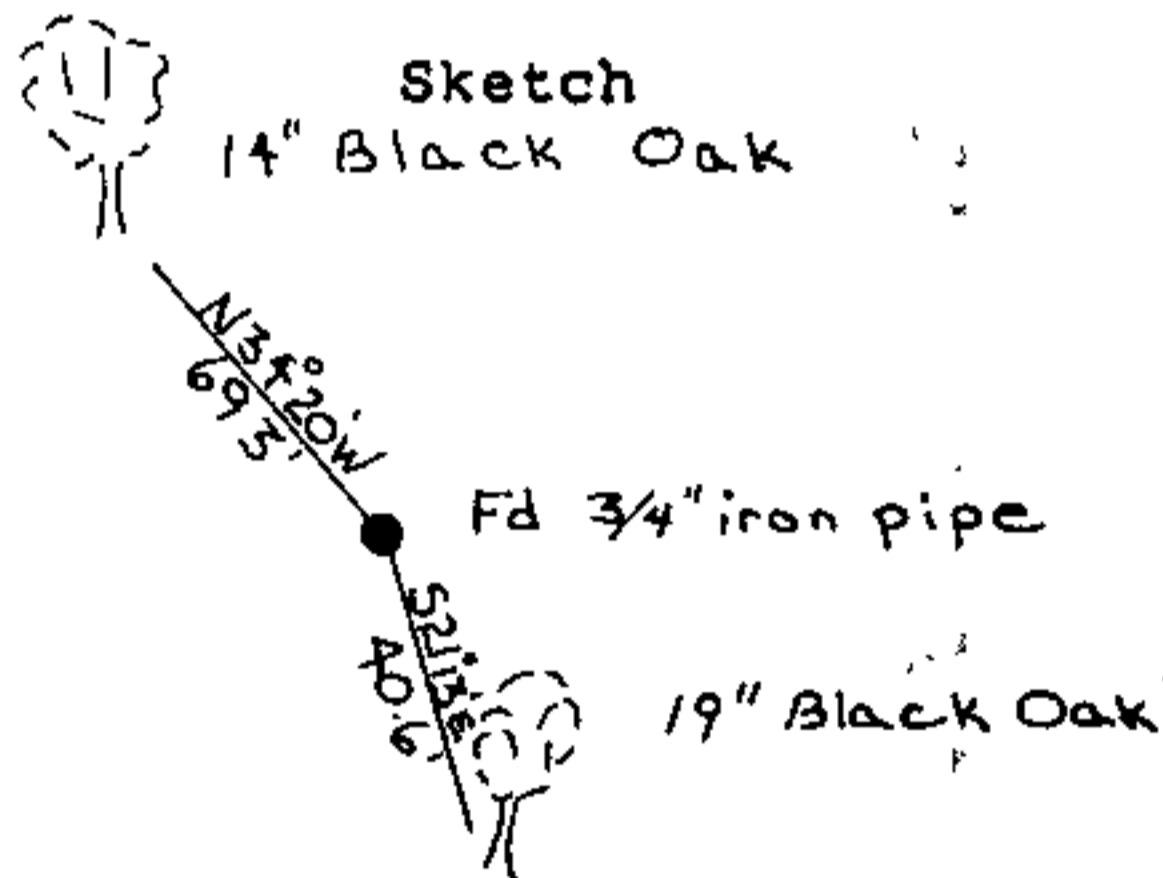
Previous Renewals/Surveys, etc.

Set by Lake & Hyde, contract # 54, 1855, Single proportioned by H.W. Lawrence, 1955, accepted by Robert M. Thomson, 1962.

Monument(s) & Accessories Found: (Condition and Source)

Found 3/4" iron pipe projecting 1" above ground from which; A 19" (17") Black Oak bears S21°13'E, 40.6 ft. with healed blaze; A 14" (10") Black Oak bears N34°20'11", 69.3 ft. with healed blaze.

Monument Detail



Monument Set (Procedures and Description)

None

New Accessories

None

Location & Comments

References by Theodolite and chain.

Compass Declination 20°

Firm/Agency Oregon State  
Parks & Recreation Div.

Address 525 Trade Street SE  
Salem OR 97310

Party Chief R. Hill

Notes R. Hill

Witness L. Boge & H. Hanson

Seal

REGISTERED  
PROFESSIONAL  
LAND SURVEYOR

*John E. Hollingsworth*

OREGON  
JULY 9, 1988  
JOHN E. HOLLINGSWORTH  
691

C.S. File No 63/62 V

FILED

TF

OREGON CORNER RESTORATION FORM

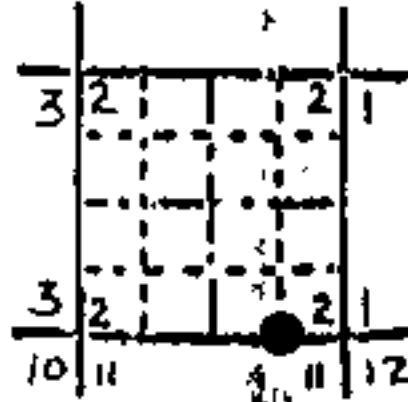
DEC 22 1988

Section 2 Township 33 S Range 6W  
County Douglas Josephine Date 8/17/88

COUNTY SURVEYOR  
DOUGLAS COUNTY, ORE

Corner Designation

E 1/16  $\frac{2}{11}$



- Condition Report Only
- Not Found
- Renewed
- Unrecorded
- Surveyed In
- Referenced Out

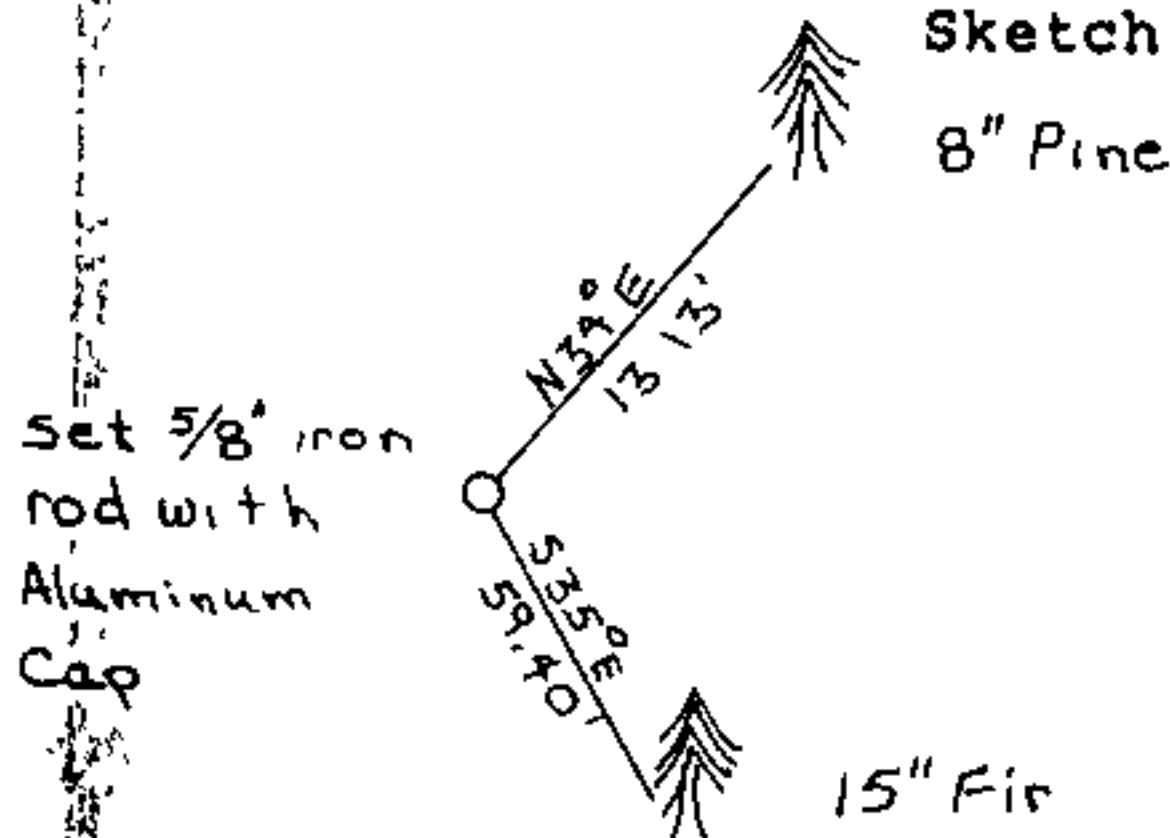
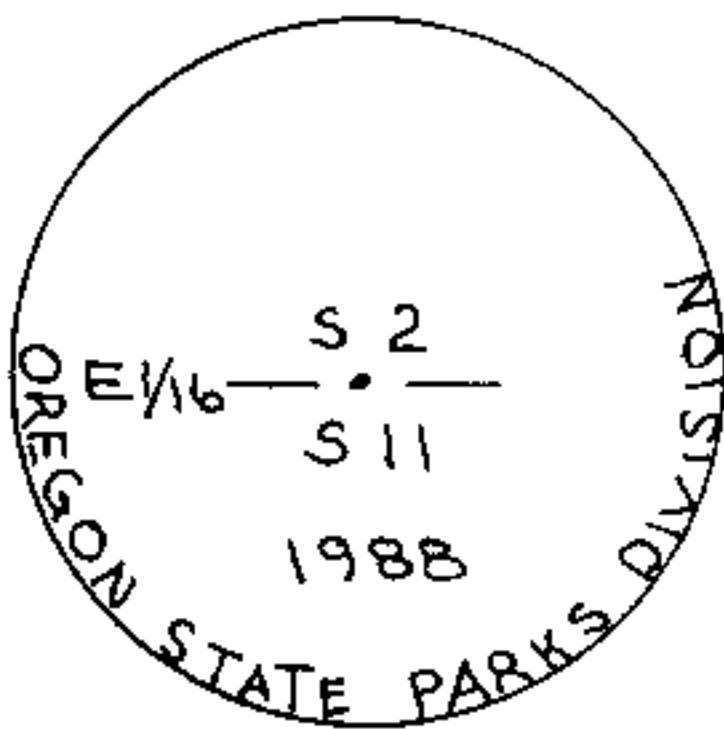
Previous Renewals/Surveys, etc.

None

Monument(s) & Accessories Found: (Condition and Source)

None

Monument Detail



Monument Set (Procedures and Description)

Set 5/8"x30" iron rod with aluminum cap 26" in ground.

New Accessories

- A 8" pine bears N34°E, 13 13 ft to 2 finish nails side & center marked "E1/16 S 2BT",
- A 15" fir bears S35°E, 59.40 ft to 2 finish nails side & center marked "E1/16 S 11 BT".
- Set orange carsonite post 2<sup>nd</sup> north marked "E 1/16  $\frac{2}{11}$ "

Location & Comments

References by hand  
compass and chain

Compass Declination 20°

Firm/Agency Oregon State  
Parks & Recreation Div.

Address 525 Trade Street SE  
Salem OR 97310

Party Chief R. Hill

Notes H. Hanson

Witness L. Boge

Seal

REGISTERED  
PROFESSIONAL  
LAND SURVEYOR

*John E. Hollingsworth*

OREGON  
JULY 6, 1888  
JOHN E. HOLLINGSWORTH  
691

FILED TF

OREGON CORNER RESTORATION FORM

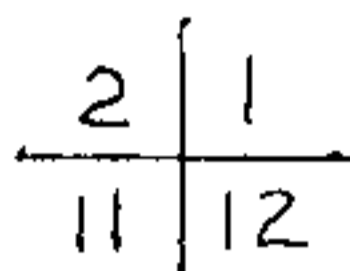
DEC 22 1988

Section 2 Township 33 Range 6W

COUNTY SURVEYOR  
DOUGLAS COUNTY, ORE.

County Josephine Date 6/30/88

Corner Designation



- Condition Report Only
- Not Found
- X Renewed
- Unrecorded
- Surveyed In
- Referenced Out

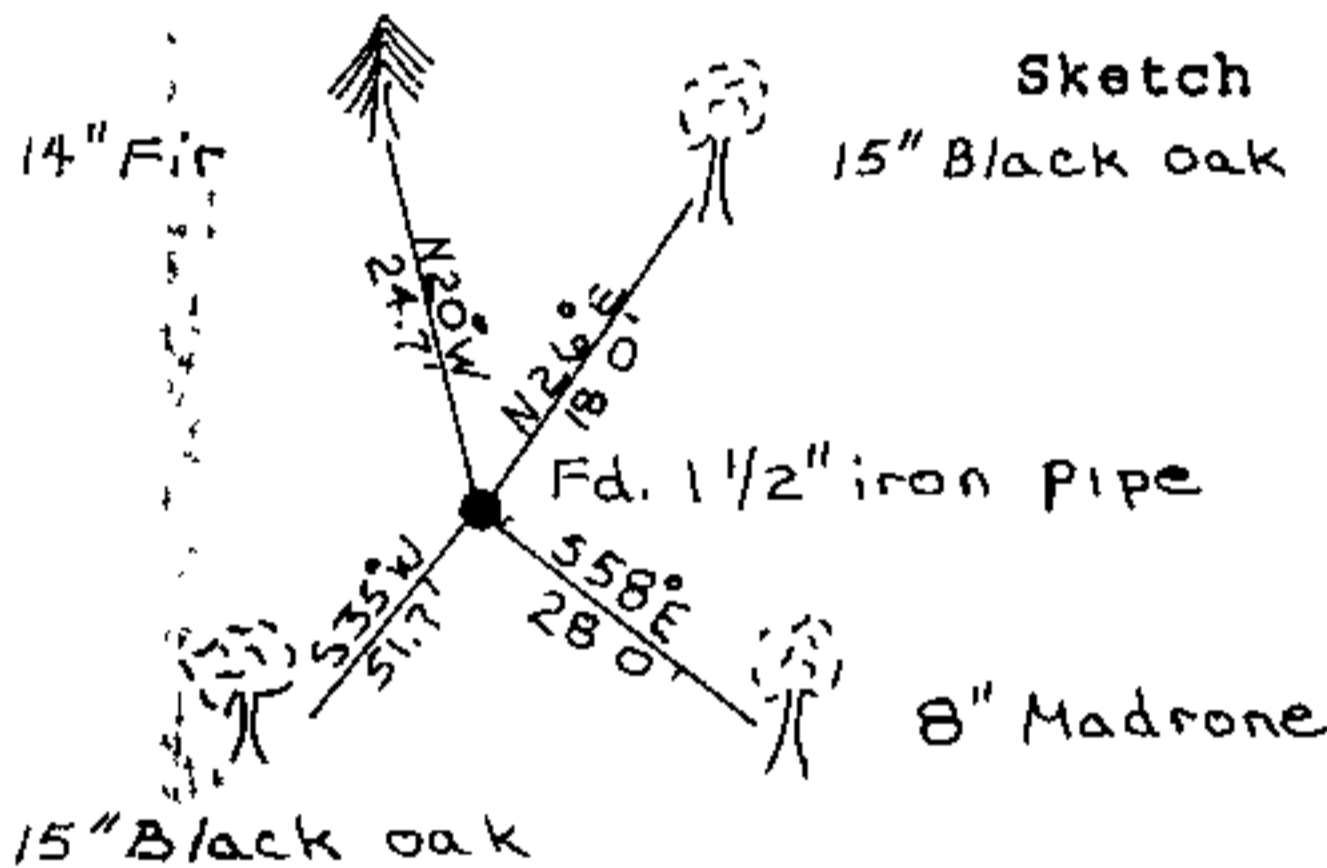
Previous Renewals/Surveys, etc.

Set by Lake & Hyde, Con. #54, 1855; Noted by Thompson 1962, GS #34-62, renewed by Reece, 1982, CS Book 7, page 109

Monument(s) & Accessories Found: (Condition and Source)

Found 1 1/2" iron pipe 6" above ground from which; no evidence of original BT's, a 15" black oak bears N26°E, 18.0 ft with sawed into healed blaze; no evidence of 8" Madrone, and the BT's marked by Reece. Found: a down 14" fir bears S30°E, 4.9 ft, no scribing visible; a 15" Black Oak bears S35°W, 51.7 (24.7) ft with "CS S11 BT" visible in partially healed blaze; a 14" fir bears N20°W, 24.7 ft with healed blaze.

Monument Detail



Monument Set (Procedures and Description)

None

New Accessories

8" Madrone bears S58°E, 28.0 ft marked "T33SR6WS12BT"  
Set orange carsonite post with decal marked "Property Boundary State Park Land Behind This Sign" 2 ft NW.

Location & Comments

References by hand  
compass and chain

Compass Declination 20°

Firm/Agency Oregon State  
Parks & Recreation Div.

Address 525 Trade Street SE  
Salem OR 97310

Party Chief R. Hill

Notes H Hanson

Witness L. Boge

Seal

REGISTERED  
PROFESSIONAL  
LAND SURVEYOR

*John E. Hollingsworth*

OREGON  
JULY 9, 1968  
JOHN E. HOLLINGSWORTH  
691

FILED

TF

OREGON CORNER RESTORATION FORM

DEC 22 1988

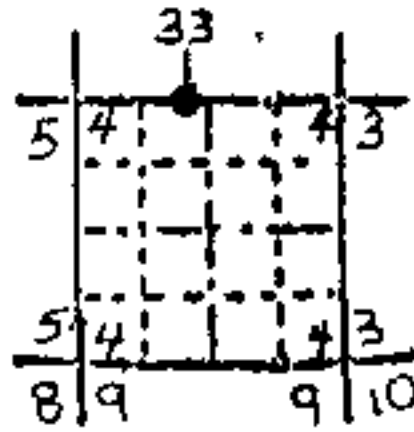
Section 33 Township 32S Range 6W

COUNTY SURVEYOR  
DOUGLAS COUNTY, ORE.

County Douglas Date 8/2/88

Corner Designation

Quarter 33  
Corner



- Condition Report Only
- Not Found
- Renewed
- Unrecorded
- Surveyed In
- Referenced Out

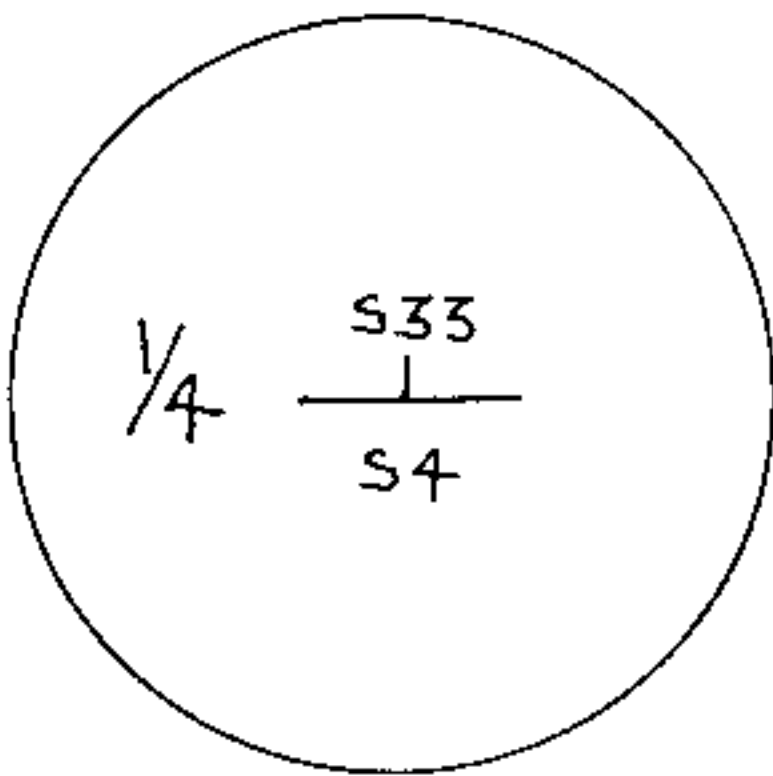
Previous Renewals/Surveys, etc.

Set by Hyde & Gardner, contract #54, 1855, Renewed by Eppstein, 1929, Wenderoth 1948, Irving 1953 and DCSO 1986 (C.S. 62/31)

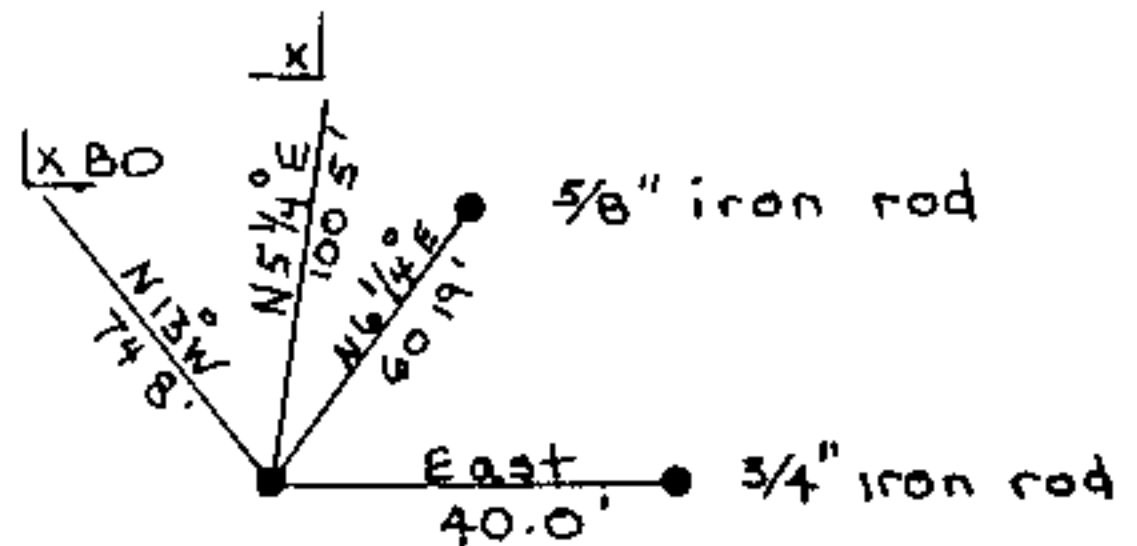
Monument(s) & Accessories Found: (Condition and Source)

Found a DCSO brass cap/I.P. 6" below ground with a 3/4" I.P. 3" N 2" below ground; from which an X & B.O. scribed in concrete on south-west end of bridge curbing bears N13°W, 74.8 ft; an X scribed in concrete on southeast corner of south bridge pier bears N51/4°E, 100.5 ft; a W.C. 3/4" I.R., east, 40.0 ft; a 5/8" I.R. with DCSO aluminum cap stamped "C104 A 1985" bears N61/4°E, 60.19 ft

Monument Detail



Sketch



Monument Set (Procedures and Description)

None

New Accessories

None

Location & Comments

References by hand compass and chain. As per Douglas Co. Renewals # 12, 17, 25 & 171.

Compass Declination 20°

Firm/Agency Oregon State Parks & Recreation Div.

Address 525 Trade Street SE Salem OR 97310

Party Chief R Hill

Notes R Hill

Witness L. Boge, H Hanson

Seal

REGISTERED PROFESSIONAL LAND SURVEYOR

*John E. Hollingsworth*

OREGON JULY 9, 1985 JOHN E. HOLLINGSWORTH 691

FILED TF

DEC 22 1988

OREGON CORNER RESTORATION FORM

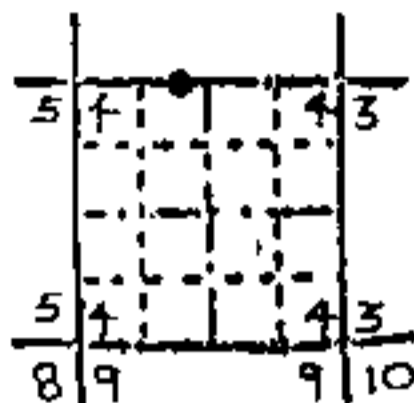
Section 4 Township 33 S Range 6W

COUNTY SURVEYOR  
DOUGLAS COUNTY, ORE

County Douglas Date 8/2/88

Corner Designation

West W C  
to  
N 1/4 Sec. 4



- Condition Report Only
- Not Found
- Renewed
- Unrecorded
- Surveyed In
- Referenced Out

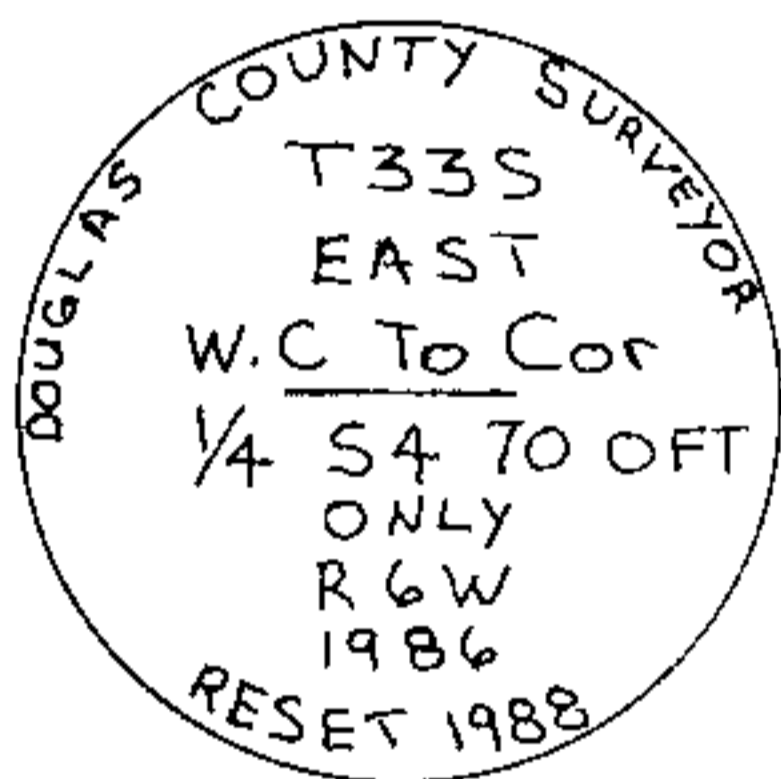
Previous Renewals/Surveys, etc.

Set by Smith 1986, (CS 62/34), renewed by Smith, 1988 (CS 62/52)

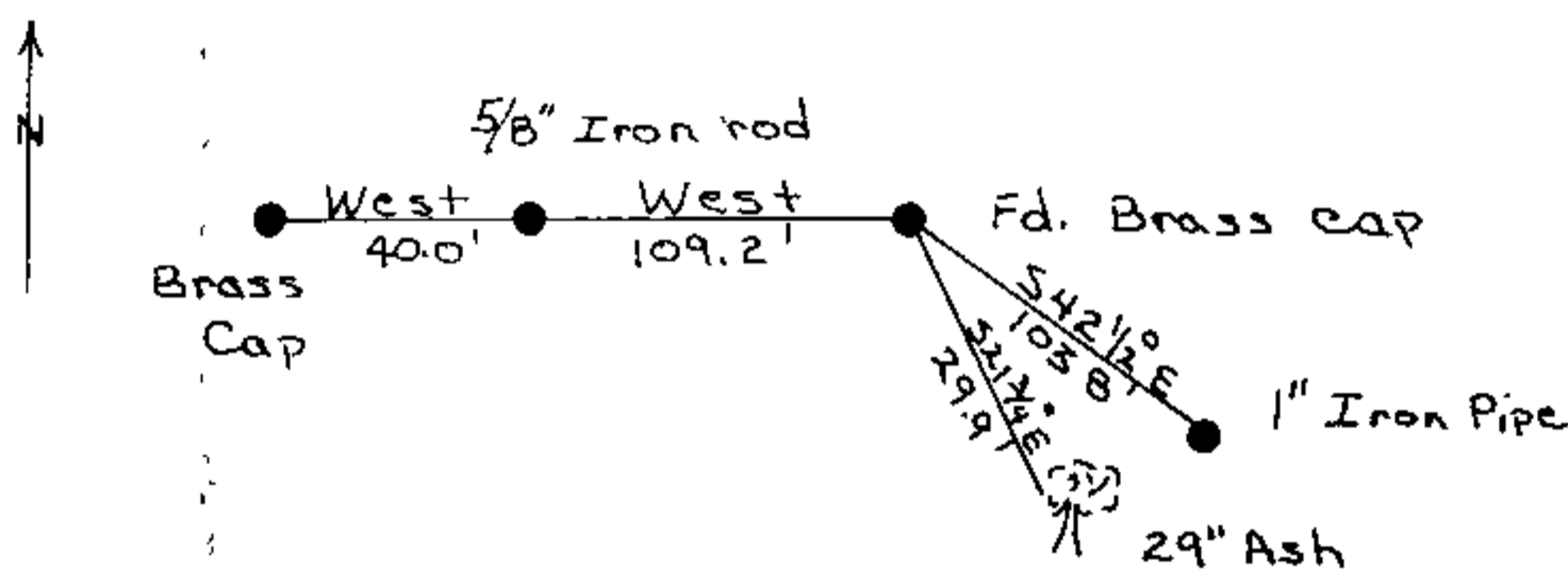
Monument(s) & Accessories Found: (Condition and Source)

Found 1" inside diameter iron pipe with brass cap in a small mound of stones from which a white steel guard post bears East 1.0 ft., a 29" ash bears S21 3/4°E, 29.9 ft, S 1/4 Cor. S33, T32SR6W bears west 149.2 ft, 5/8" iron rod bears west 109.2 ft, 1" iron pipe bears S42 1/2°E, 103.8 ft (south W.C. to N 1/4 S4), 1" I.D.I P bears west 40.2 ft.

Monument Detail



Sketch



Monument Set (Procedures and Description)

None

New Accessories

None

Location & Comments

As per Douglas Co. renewals #173 & 174

Compass Declination 20°

Firm/Agency Oregon State Parks & Recreation Div.

Address 525 Trade Street SE Salem OR 97310

Party Chief R Hill

Notes R. Hill

Witness L. Boge & H. Hanson

Seal



*John E. Hollingsworth*



FILED

DEC 22 1988

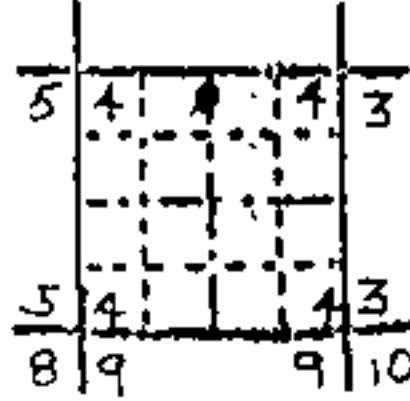
OREGON CORNER RESTORATION FORM

Section 4 Township 33 S Range 6W  
County Douglas Date 8/2/88

COUNTY SURVEYOR  
DOUGLAS COUNTY, ORE.

Corner Designation

South W.C.  
to  
N 1/4 Sec 4



- Condition Report Only
- Not Found
- Renewed
- Unrecorded
- Surveyed In
- Referenced Out

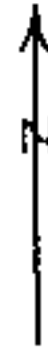
Previous Renewals/Surveys, etc.

Set by Wenderoth, 1962 (CS 52/137), Smith, 1986, (CS 62/34),  
Smith, 1988 (CS 62/52)

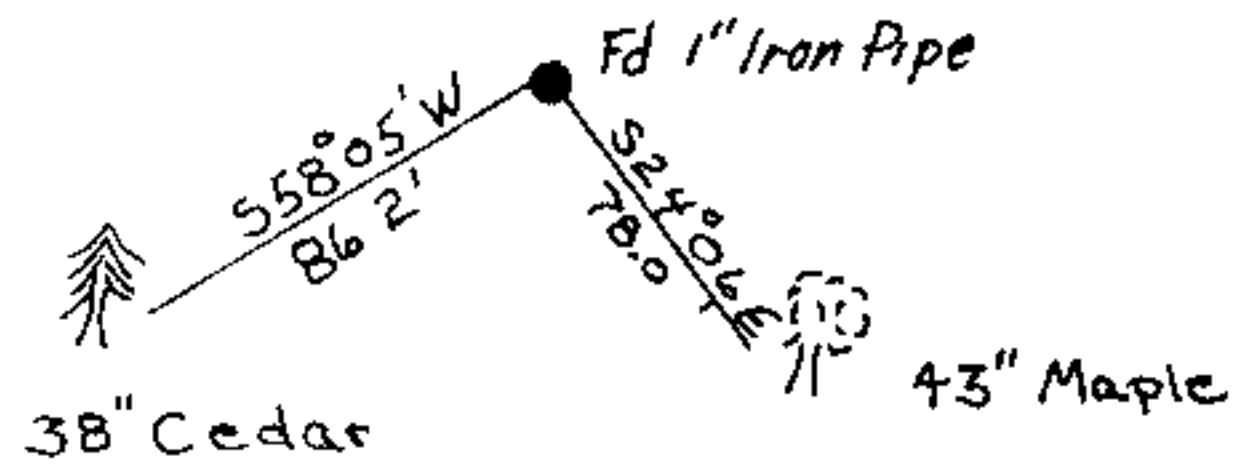
Monument(s) & Accessories Found: (Condition and Source)

Found 1" iron pipe flush with ground, 0.5' west of N/S barb fence line from which; a 43" maple bears S24°06"E, 78.0 ft with healed blaze; a 38" cedar bears S58°05'W, 86.2 ft with healed blaze.

Monument Detail



Sketch



Monument Set (Procedures and Description)

None

New Accessories

None

Location & Comments

As per Douglas Co. renewals #70, 173 & 174

Compass Declination 20°

Firm/Agency Oregon State Parks & Recreation Div.

Address 525 Trade Street SE  
Salem OR 97310

Party Chief R. Hill

Notes R. Hill

Witness L. Boge & H. Hanson

Seal

REGISTERED  
PROFESSIONAL  
LAND SURVEYOR

*John E. Hollingsworth*

OREGON  
JULY 9, 1909  
JOHN E. HOLLINGSWORTH  
691