

# MINOR PARTITION

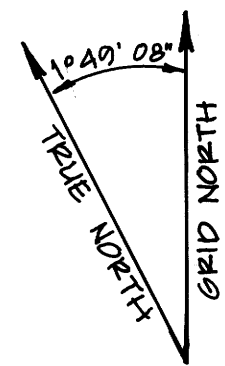
FOR

## GEM M. MOORE

A PORTION OF GOVERNMENT LOTS 7 AND 10  
LOCATED IN THE EAST 1/2 OF SECTION  
22, TOWNSHIP 30 SOUTH, RANGE 4 WEST, W.M.  
DOUGLAS COUNTY,  
OREGON  
SCALE: 1" = 500'  
DECEMBER, 1988

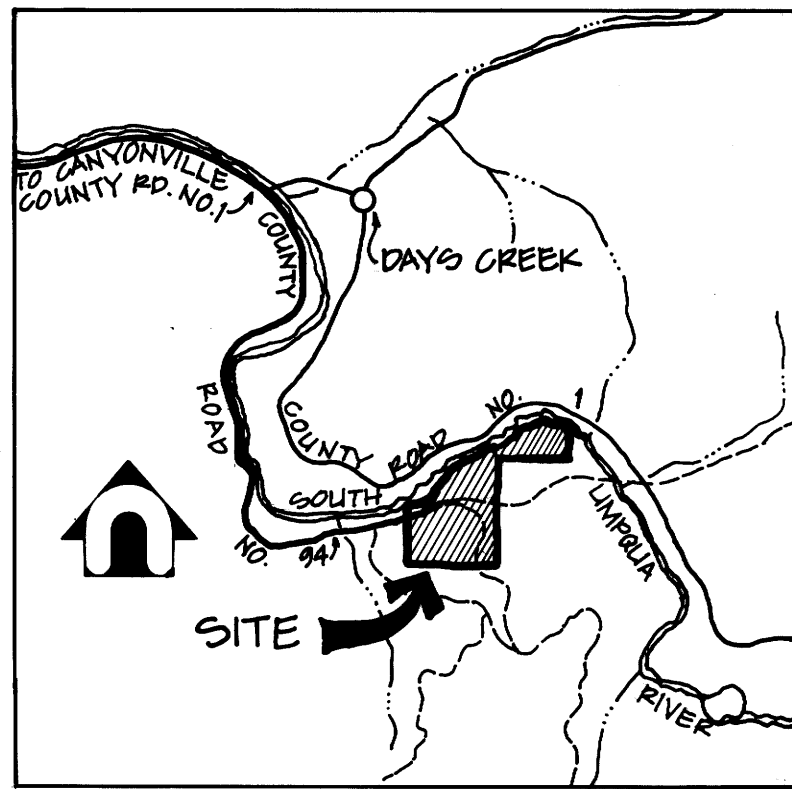
Br. 10 - Pg 95 A

FILED



FILED  
1988 DEC 16 PM 1  
DAVID EVANS AND ASSOCIATES  
DOUGLAS COUNTY, ORE.

M107-13A



VICINITY MAP  
NOT TO SCALE

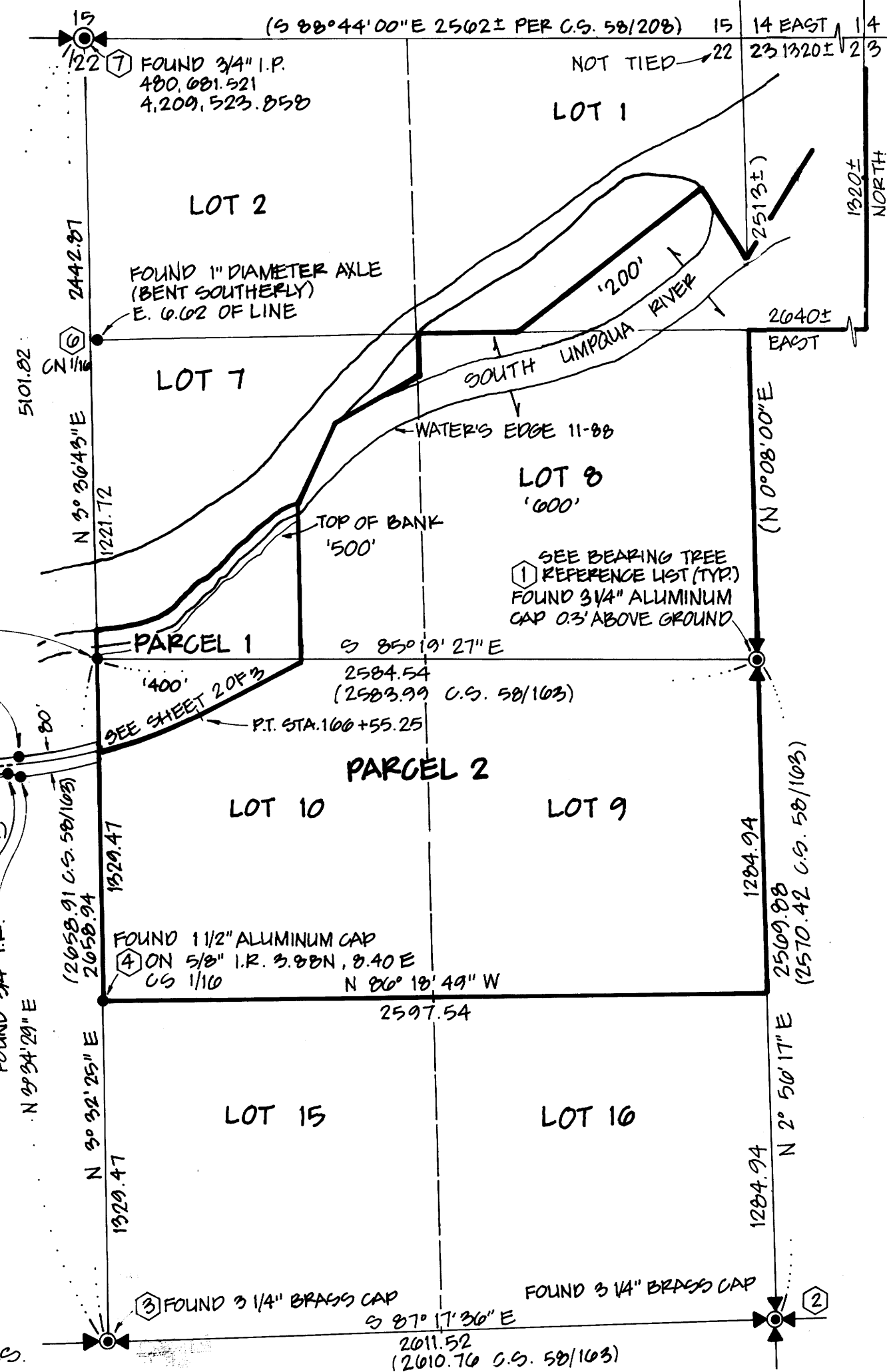
**DEA** DAVID EVANS AND ASSOCIATES, Inc.  
2026 S.W. CORBETT AVENUE  
PORTLAND, OREGON 97201  
PHONE: (503) 223-0003

### LEGEND

- FOUND MONUMENT AS NOTED
- ⊙ PUBLIC LAND SURVEY CORNER
- ( ) RECORD DATA
- C.R. COUNTY ROAD

REGISTERED  
PROFESSIONAL  
LAND SURVEYOR

*Billy R. Mumma*  
OREGON  
JULY 17, 1981  
BILLY R. MUMMA  
1950



### BEARING TREE REFERENCES

- 1) 24" FIR S 88°W 30.0  
18" OAK N 23°E 40.5
- 2) 10" LAUREL N 15°W 33.0  
48" FIR S 80°W 29.0  
12" FIR S 51°E 55.4  
8" LAUREL S 85°W 21.8  
26" FIR N 52°E 145.9
- 3) 20" DEAD FIR N 40°E 11.7  
24" FIR S 20°W 25.1
- 4) 14" OAK N 30°W 9.5  
16" OAK S 20°E 10.6

- 5) FOUND 1 1/2" ALUMINUM CAP ON 5/8" I.R. W.I.S.B OF LINE
- 6) 1" AXLE: 32" CEDAR S 71°E 43.5  
12" OAK N 31°W 25.7
- 7) 3/4" I.P.: 30" MAPLE N 21°E 51.2  
BOULDER OUTCROP, 4'x4'x8' S 14°W 70.8 PER C.S. 7/31

NOTE: BASIS OF BEARINGS PER DAVID EVANS AND ASSOCIATES GLOBAL POSITIONING SYSTEM CONTROL NETWORK. SEE SHEET 3 FOR DETAILS.

M107-13A