

(B) CLOSING CORNER SECTIONS 6 & 7

FOUND - U.S. BLM BRASS CAP "1958"
 15" FIR SNAG, N 56° E, 71.6'
 20" FIR, S 53° E, 76.1'
 18" FIR, S 10° W, 75.4'
 14" FIR, N 51° W, 2.3'
 NOTE - ETCHED STONE, N 88° E, 3.1'

(A) 1/4 CORNER 6 & 7

FOUND - U.S. BLM BRASS CAP "1958"
 27" FIR, N 23° E, 25.1' SNAG
 13" FIR STUB, N 25° E, 9.9'
 21" HEMLOCK, S 68° E, 13.8'
 26" HEMLOCK, S 29° E, 57.0'

NARRATIVE

THIS SURVEY WAS MADE IN APRIL TO SEPT., 1988 BY DANIEL W. BAKER OF PEEL BAKER LAND SURVEYING, INC., 1262 LAWRENCE ST. - SUITE 4, EUGENE, OREGON, 97401. THE PURPOSE OF THIS SURVEY WAS TO LOCATE AND MARK IN THE FIELD THE PROPERTY LINES OF THE PROPERTY OF MARGARET CROWELL IN THE WEST 1/2 OF THE SOUTHWEST 1/4 OF SECTION 12, T 19 S, R 9 W, AND THE EAST 1/2 OF THE SOUTHEAST 1/4 OF SECTION 12, T 19 S, R 10 W, W.M. A KERN KIM THEODOLITE AND DM 502 E.D.M. WAS USED TO PERFORM THIS SURVEY. RANDOM TRANSIT TRAVERSES, WITH A MINIMUM ERROR OF CLOSURE OF 1" ± 5.000 WERE RUN BETWEEN FOUND CORNERS FOR CONTROL AND CLOSED TRANSIT TRAVERSES WERE RUN AS CLOSE AS POSSIBLE TO THE TRUE LINE AND OFFSETS TO THE TRUE PROPERTY LINES WERE CALCULATED AND USED TO DETERMINE AND MARK THE TRUE PROPERTY LINES IN THE FIELD. BEARINGS WERE BASED ON A SOLAR OBSERVATION FROM C.S. 22751, IN SECTION 12, T 19 S, R 10 W, THE NORTH 1/4, WEST 1/4, AND SOUTHWEST SECTION CORNERS WERE TIED IN CS 24151 AND C.S. 22751 BY TRIANGLE ENGINEERING COMPANY AND I USED THE COORDINATES FROM THIS SURVEY TO SUBDIVIDE THIS SECTION. AFTER I TIED THE NORTHEAST SECTION CORNER, EAST 1/4, AND SOUTHEAST SECTION CORNER, THE SOUTH 1/4 CORNER WAS SET AT MIDPOINT BETWEEN THE SOUTHWEST AND SOUTHEAST SECTION CORNERS. THE EAST 1/16 CORNER ON THE SOUTH LINE WAS SET AT MIDPOINT BETWEEN THE SOUTHWEST SECTION CORNER AND THE SOUTH 1/4 CORNER. THE CENTER 1/4 CORNER WAS DETERMINED (NOT SET) AT THE INTERSECTION OF THE NORTH - SOUTH AND EAST - WEST CENTERLINES. THE CENTER - EAST 1/16 CORNER WAS SET AT MIDPOINT BETWEEN THE CENTER 1/4 AND EAST 1/4 CORNER. IN SECTION 7, T 19 S, R 9 W, ALL CORNERS WERE MONUMENTED BY THE B.L.M. CADASTRAL SURVEYORS IN 1958. THE WEST 1/4 CORNER WAS FOUND TO BE OUT OF POSITION, SO I SET A NEW WEST 1/4 CORNER AT MIDPOINT LATITUDINALLY BETWEEN THE SOUTHWEST AND NORTHWEST SECTION CORNERS OF SECTION 7, T 19 S, R 9 W, W.M.. THE WEST 1/16 CORNER ON SOUTH LINE WAS SET AT MIDPOINT BETWEEN THE SOUTH 1/4 CORNER AND THE SOUTHWEST SECTION CORNER OF SECTION 7. THE CENTER 1/4 CORNER WAS DETERMINED (NOT SET) AT THE INTERSECTION OF THE NORTH - SOUTH AND EAST - WEST CENTERLINES. THE CENTER - WEST 1/16 CORNER WAS SET AT MIDPOINT BETWEEN THE CENTER 1/4 AND THE WEST 1/4. THE PROPERTY LINE WAS MARKED IN THE FIELD BY BLAZING TREES (BLAZES PAINTED YELLOW) AND BY SETTING 6 FOOT FIBERGLASS POSTS MARKED "PROPERTY BOUNDARY" AT RANDOM INTERVALS ALONG THE TRUE PROPERTY. ALL CORNERS SET IN THIS SURVEY WERE MONUMENTED WITH U.S.D.A. - FOREST SERVICE ALUMINUM MONUMENTS, UNLESS OTHERWISE NOTED, AND BEARING TREES WERE MARKED ACCORDING TO THE 1973 B.L.M. MANUAL OF INSTRUCTIONS. DISTANCE TO BEARING TREES ARE TO THE SIDE CENTER OF THE TREE AND BEARINGS ARE MAGNETIC - VARIATION = 20°.

(D) 1/4 CORNER 1 & 12

FOUND - U.S.F.S. ALUMINUM MONUMENT " PLS 752"
 68" FIR, S 42° E, 34.8'
 40" FIR, N 64° W, 22.2'
 NOTE - 1979 SURVEY DATA - C.S. 22751

(E) 1/4 CORNER 11 & 12

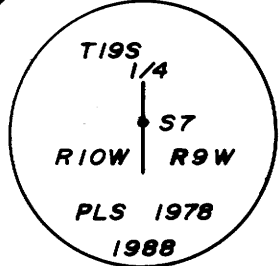
FOUND - U.S.F.S. ALUM. MON. " PLS 752"
 39" FIR STUMP, S 46° E, 51.2'
 48" FIR STUMP, N 84° W, 71.0'
 21" HEMLOCK STUMP, N 7° W, 17.2'
 NOTE - 1980 SURVEY DATA - C.S. 24151

(C) STANDARD CORNER SECTIONS 1 & 12

FOUND - U.S. BLM BRASS CAP "1958"
 30" FIR, N 80° W, 24.5'
 30" FIR, S 46° W, 104.2'

(H) 1/4 CORNER SECTION 7 ONLY

SET - U.S.F.S. ALUMINUM MONUMENT
 34" FIR, N 48° E, 115.5' - BLM B.T.
 26" HEMLOCK, S 72 1/2° E, 59.1'
 scribed - 1/4 S7 BT
 NOTE - 1/4 COR. SET BY BLM IN 1958
 BEARS N 37° 04' 53" E, 74.85'

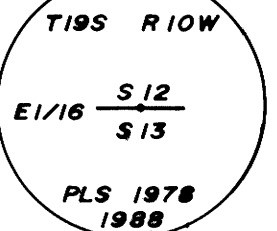
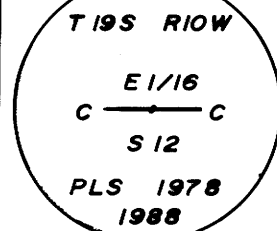


(T) SECTION CORNER 11, 12, 13, 14

FOUND - DOUGLAS CO. BRASS CAP
 24" FIR STUMP, N 35 1/2° E, 61.5'
 38" FIR STUMP, S 36 1/2° E, 56.1'
 30" FIR STUMP, S 61 1/2° W, 39.0'
 NOTE - TRUE CORNER POINT BEARS
 S 4° 38' E, 1.30'
 1980 SURVEY DATA - C.S. 24151

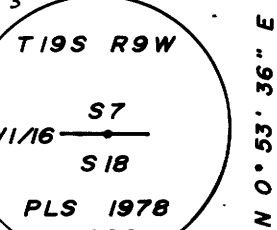
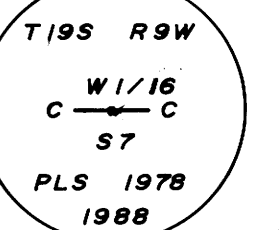
(F) C-E 1/16 CORNER SEC. 12

SET - U.S.F.S. ALUMINUM MONUMENT
 30" FIR, S 33° W, 16.9'
 scribed - CE 1/16 S12 BT
 22" FIR, N 6° W, 21.9'
 scribed - CE 1/16 S12 BT



(J) C-W 1/16 CORNER SEC. 7

SET - U.S.F.S. ALUMINUM MONUMENT
 22" FIR, S 43° E, 33.7'
 scribed - CW 1/16 S7 BT
 28" HEMLOCK, N 4° E, 15.7'
 scribed - CW 1/16 S7 BT



(K) 1/4 CORNER 7 & 8

FOUND - U.S. BLM BRASS CAP "1957"
 24" ROTTEN HEMLOCK STUMP, N 77° E, 10.0'
 27" FIR, S 59° E, 77.4'

(S) 1/4 CORNER 12 & 13

SET - U.S.F.S. ALUMINUM MONUMENT
 11" HEMLOCK, N 80° E, 10.4'
 scribed - 1/4 S12 BT
 9" HEMLOCK, S 27° E, 30.2'
 scribed - 1/4 S13 BT
 NOTE - 1/4 COR. POSITION AS PER
 RE-ESTAB 2187 (LANE CO.)
 BEARS N 21° 15' W, 12.33'

(R) EAST 1/16 CORNER 12 & 13

SET - U.S.F.S. ALUMINUM CAP IN ROCK
 14" HEMLOCK, S 26° E, 48.6'
 scribed - E 1/16 S13 BT
 24" FIR, N 71° W, 48.6'
 scribed - E 1/16 S12 BT
 NOTE - BRASS CAP AS PER
 RE-ESTAB 2187 (LANE CO.)
 BEARS N 60° 23' 27" W, 5.08'

(N) CLOSING CORNER 7 & 18

FOUND - U.S. BLM BRASS CAP "1958"
 24" FIR, N 11° E, 60.3'
 12" HEMLOCK, S 64° E, 38.1'

(M) WEST 1/16 CORNER 7 & 18

SET - U.S.F.S. ALUMINUM MONUMENT
 16" FIR, N 60° W, 31.8'
 scribed - W 1/16 S7 BT
 10" HEMLOCK, S 47° E, 22.4'
 scribed - W 1/16 S18 BT

(L) 1/4 CORNER 7 & 18

FOUND - U.S. BLM BRASS CAP "1958"
 21" FIR, S 39° E, 40.6'
 (record, S 32° E, 63 LKS.)
 NORTHWEST B.T. DOWN

BASIS OF BEARING SOLAR OBSERVATION FROM C.S. 22751 (LANE COUNTY)

SCALE 1" = 400'

- CORNERS FOUND
- CORNERS SET (U.S.F.S. ALUMINUM MON.) 2 1/2" X 3/4" ALUM. PIPE W/ 3/4" CAP
- BLAZED AND POSTED PROPERTY LINE
- () RECORD DATA
- - - - COUNTY LINE

SURVEY IN
 SE 1/4 SECTION 12 T 19 S R 10 W W.M.
 SW 1/4 SECTION 7 T 19 S R 9 W W.M.
 LANE AND DOUGLAS COUNTIES, OREGON

REGISTERED
 PROFESSIONAL
 LAND SURVEYOR

Daniel W. Baker
 OREGON
 JULY 15, 1982
 DANIEL W. BAKER
 1978

FOR
MARGARET CROWELL
 BY
PEEL BAKER LAND SURVEYING INC.

SEPTEMBER 19, 1988

COUNTY SURVEYORS FILE DATA
 NOT REMOVE FROM OFFICE

MAP FILE M119-7-1

For
 County
 1110-15