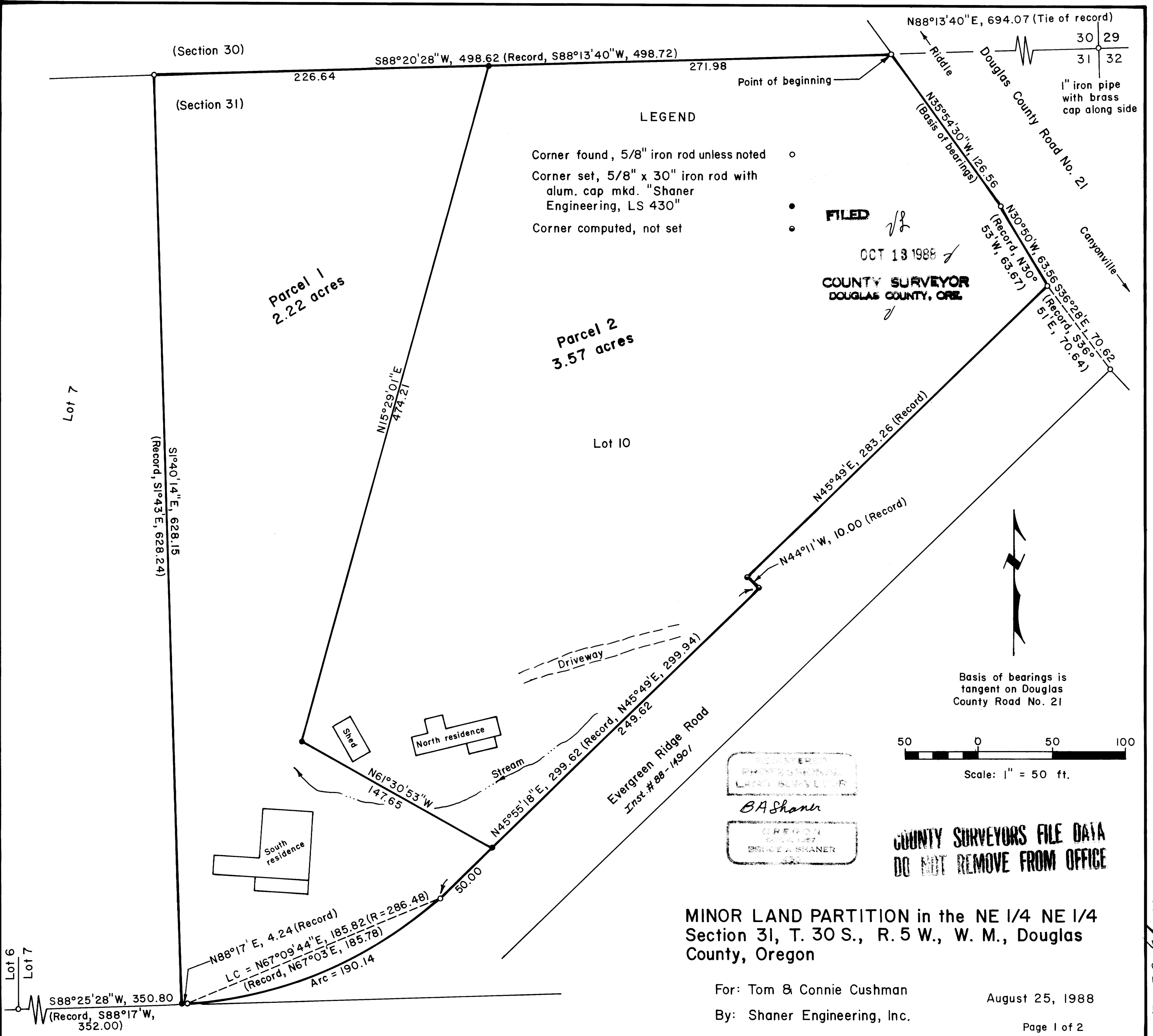


MAP FILE M1146-72-A



LEGEND

- Corner found, 5/8" iron rod unless noted ○
- Corner set, 5/8" x 30" iron rod with alum. cap mkd. "Shaner Engineering, LS 430" ◻
- Corner computed, not set •

FILED

OCT 13 1988

COUNTY SURVEYOR
DOUGLAS COUNTY, ORE.

Basis of bearings is tangent on Douglas County Road No. 21

Scale: 1" = 50 ft.

MINOR LAND PARTITION in the NE 1/4 NE 1/4 Section 31, T. 30 S., R. 5 W., W. M., Douglas County, Oregon

For: Tom & Connie Cushman
By: Shaner Engineering, Inc.

August 25, 1988

BK 10 pg 56-A