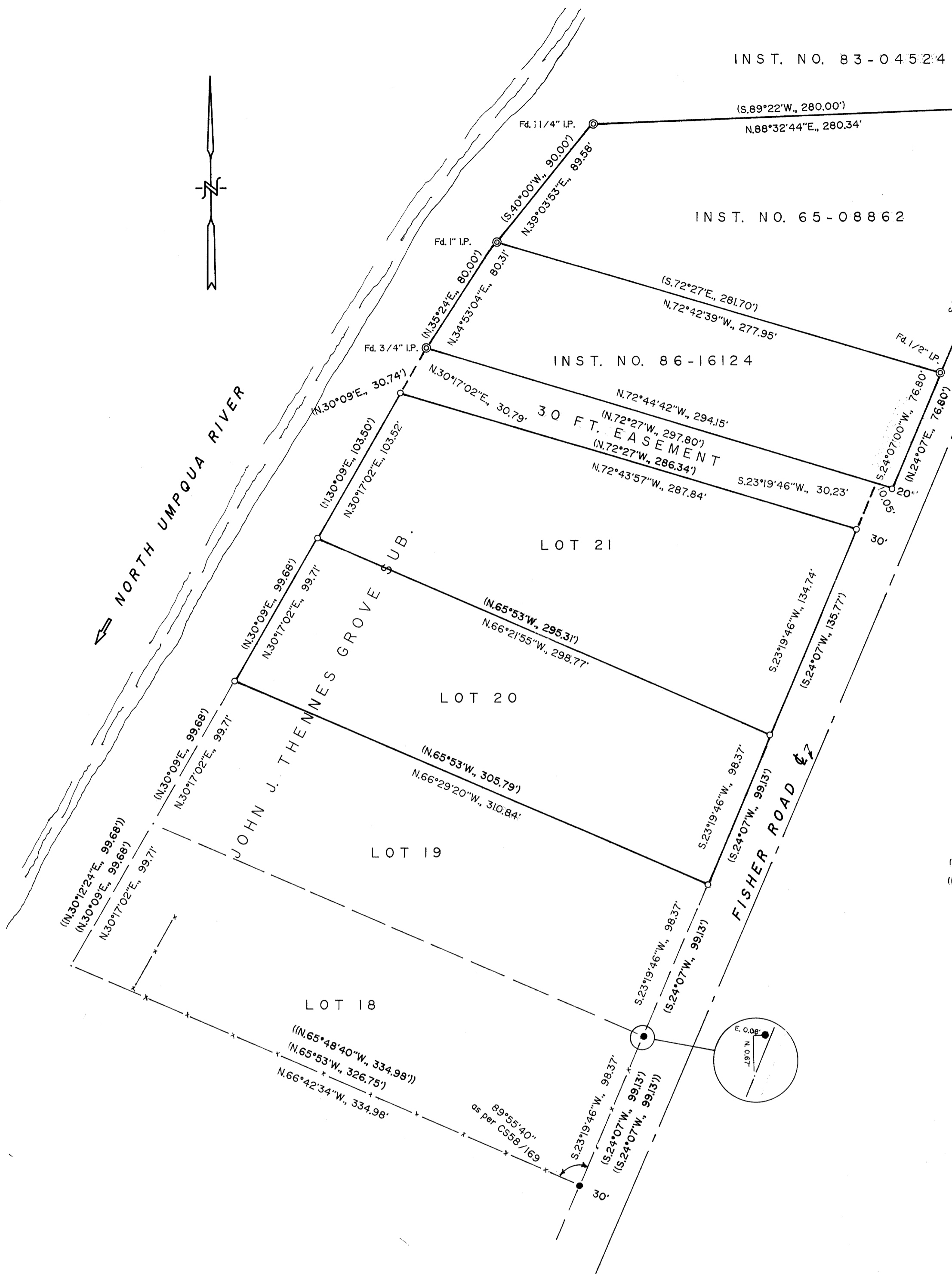


FILED

SEP 19 1988 TF

COUNTY SURVEYOR  
DOUGLAS COUNTY, ORE.



LEGEND:

- = Set 5/8" X 30" I.R. w /plastic cap mk'd. "BAUGHMAN TECH SERV"
- = Fd. 5/8" I.R. (CS58/169)
- ⊙ = Fd. as noted as per deed record
- = Pt. calculated but not set
- ( ) = Record calls plat or deed
- (( )) = Record calls CS58/169

NARRATIVE

The purpose of this survey was to monument or recover the corners of Lots 20 and 21 of John J. Thennes Grove a subdivision and two metes and bounds parcels as shown in Inst.'s. Nos. 86-16124 and 65-08862. Our control to the South was determined by CS58/169, although we could not locate the two corners nearest the river, the South line has a new fence along the property and in construction they could have been torn out as we found hub and stake lying on top of the ground. We use his location as called and the S.W. corner of Inst. No. 86-16124 to proportion the line along the river. We use his S.E. corner and reset the S.E. corner of 86-16124 along an extension of the found monuments of 65-08862 at the call distance to proportion the line along Fisher Road. We show a blow-up of the N.E. corner of CS58/169 to illustrate why we did not use this corner in our proportion work. In general we find the survey work in John J. Thennes Grove to be somewhat sloppy, but the improvements bear out the proportion work and does not cause a conflict.

This survey was performed in the field by L. Fanning and D. Baughman using a Lietz TML-A theodolite and a Auto-Ranger II EDM. The office work was done by G. Baughman.

**SURVEY TO MONUMENT OR RECOVER PROPERTY CORNERS  
IN THE N.E. 1/4 OF SECTION 27, T.26S., R.6W., W.M.  
AUGUST 1988 SCALE 1"=50'**

FOR: RICHARD KILDUFF, GREG FOX & NEIGHBORS  
1634 FISHER RD.  
ROSEBURG, OR 97470

BY: BAUGHMAN TECHNICAL SERVICE INC.  
433 S.E. MAIN STREET  
ROSEBURG, OR 97470  
PHONE 673-0966

REGISTERED  
PROFESSIONAL  
LAND SURVEYOR

*Glenn S. Baughman*

OREGON  
JULY 14, 1961  
GLENN S. BAUGHMAN  
536

COUNTY SURVEYORS FILE DATA  
DO NOT REMOVE FROM OFFICE