

COUNTY SURVEYORS FILE DATA
DO NOT REMOVE FROM OFFICE

SURVEY FOR YONCALLA PARKS AND RECREATION DISTRICT
NW 1/4 SEC. 3, T 23S, R 5W, W.M.

SURVEYED BY FRITZ INGRAM, COUNTY SURVEYOR

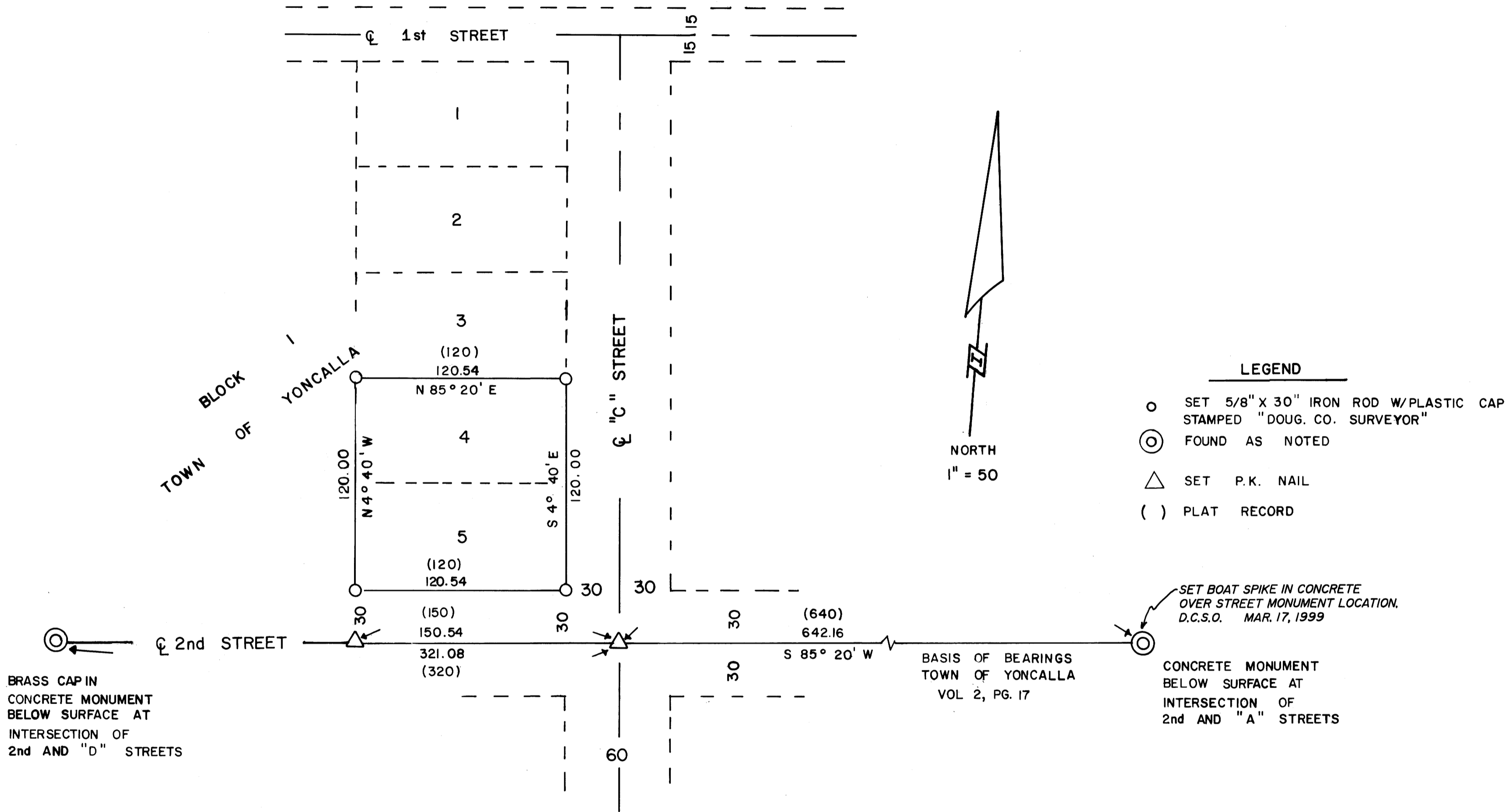
AUGUST 1988

FILED

SEP 7 1988

COUNTY SURVEYOR
DOUGLAS COUNTY, ORE.

MAP FILE M106-65



BRASS CAP IN
CONCRETE MONUMENT
BELOW SURFACE AT
INTERSECTION OF
2nd AND "D" STREETS

- LEGEND**
- SET 5/8" X 30" IRON ROD W/PLASTIC CAP STAMPED "DOUG. CO. SURVEYOR"
 - ⊙ FOUND AS NOTED
 - △ SET P.K. NAIL
 - () PLAT RECORD

SET BOAT SPIKE IN CONCRETE
OVER STREET MONUMENT LOCATION.
D.C.S.O. MAR. 17, 1999

CONCRETE MONUMENT
BELOW SURFACE AT
INTERSECTION OF
2nd AND "A" STREETS

BASIS OF BEARINGS
TOWN OF YONCALLA
VOL 2, PG. 17

NARRATIVE: SURVEY TO SET LEASE CORNERS
AS PER INSTRUMENT NUMBER 88-10387,
DOUGLAS CO. RECORDER'S OFFICE.
SINGLE PROPORTION P.K. NAILS
BETWEEN FOUND MONUMENTS.
USED PLAT RECORD FOR BEARINGS.
USED PLAT DISTANCES NORTH AS THERE
WAS NO CONTROL IN THAT DIRECTION.
RESULTS FIT EXISTING NEIGHBORING
FENCES AND POWER LINES WITHIN ± ONE FOOT.

REGISTERED
PROFESSIONAL
LAND SURVEYOR

Francis L. Ingram

OREGON
JULY 11 1988
FRANCIS L. INGRAM
302

MAP FILE M106-65

C.S. File No. 62/57

CS FILE NOT SCANNED

SUPPORT DATA FOR SURVEY