

LOT LINE ADJUSTMENT FOR BILL JUNKERS

IN THE SW 1/4, SECTION 19, T27S, R5W, W.M.

TRACT A WESTERN HEIGHTS, PORTION OF KINNEAR HEIGHTS TRACTS

AA SURVEYING SERVICE, INC.

FILED BY
AUG 30 1988
COUNTY SURVEYOR
DOUGLAS COUNTY

AUGUST 1988



REGISTERED
PROFESSIONAL
LAND SURVEYOR
Steven M. Bell
JULY 29, 1986
STEVEN M. BELL
2003

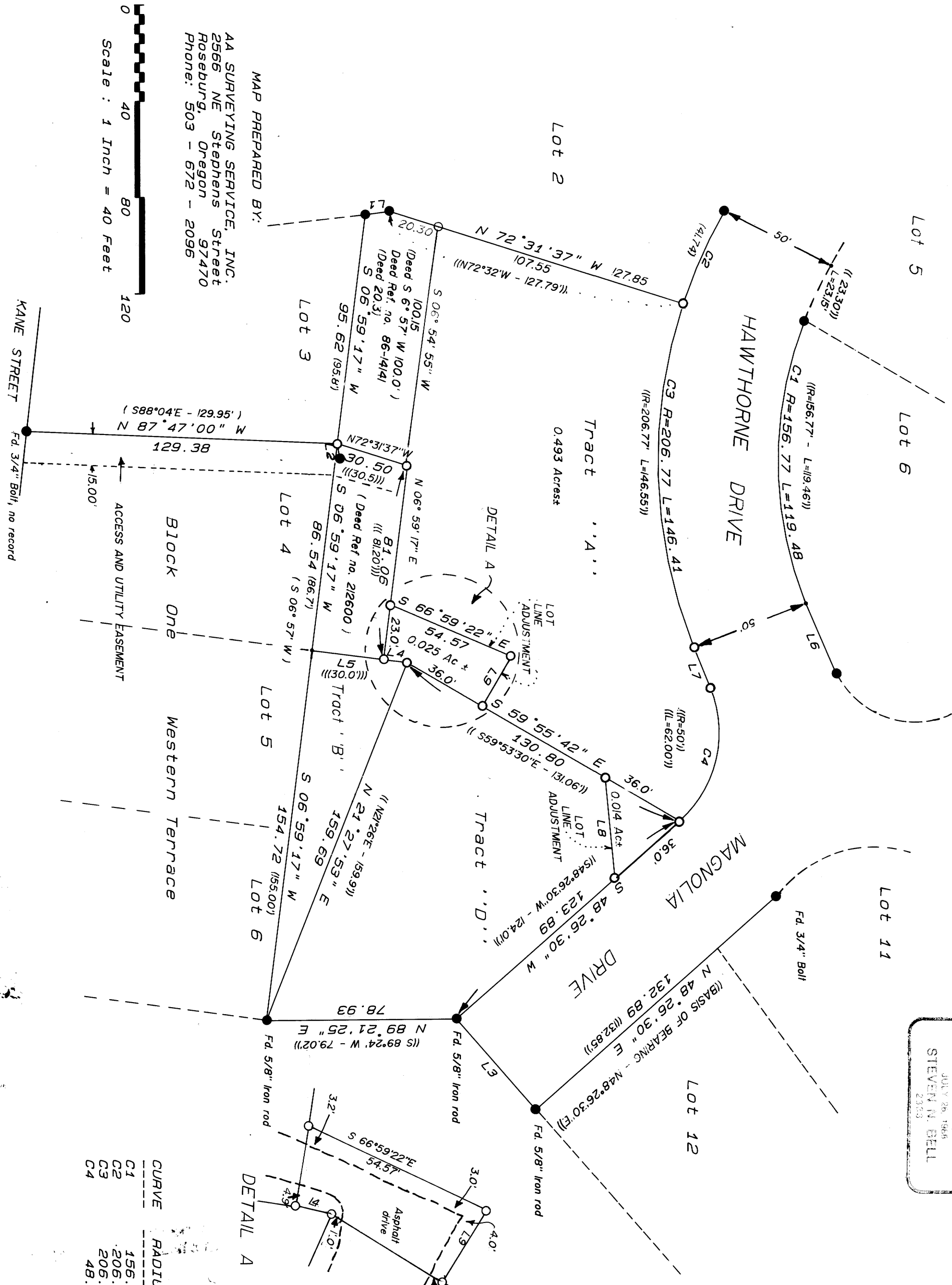
NARRATIVE

PURPOSE: TO SURVEY TRACT 'A' WESTERN HEIGHTS AND TO ADJUST THE LOT LINES IN TRACT 'A' AND 'D'.

PROCEDURE: THE FOUND LOT CORNERS IN LOTS 11 AND 12 PER VOLUME 10 PAGE 55 DETERMINED THE BASIS OF BEARING. THE 50 FOOT RIGHT OF WAY CURVE ON HAWTHORNE DRIVE WAS FIT BETWEEN THE FOUND CORNER IN LOT 2 AND THE LOT 5/5 CORNER. TO DETERMINE THE LOT LENGTHS ALONG THE RIGHT OF WAY ON LOT 2, TRACT D, AND TRACT A PROPORTIONING WAS USED BETWEEN THE FOUND CORNERS. THE FOUND IRON ROD AT THE NE CORNER OF LOT 4, WESTERN TERRACE WAS FOUND TO BE OUT OF POSITION BY MORE THAN 5 FEET AND WAS NOT USED TO PROPORTION MISSING CORNERS. PROPORTIONS BETWEEN THE NE CORNER OF LOT 3 AND THE SE CORNER OF LOT 6 USED THESE FOUND CORNERS.

Legend

- Found 3/4 in. Iron Rod or as noted
- Set 5/8 in. X 30 in. Iron Rod and Plastic Cap marked by AA SURVEYING SERVICE
- Calculated point
- () Record per Volume 10 Page 22, Western Terrace
- (()) Record per Volume 10 Page 55, Western Heights
- (((())) Record per M 7 - 32



CURVE	RADIUS	DELTA	LENGTH	TANGENT	CHORD	CHORD/BRG
C1	156.77	43° 39' 57"	119.48	62.81	116.61	S 00° 22' 41" E
C2	206.77	11° 32' 18"	41.70	20.92	41.65	S 24° 08' 12" W
C3	206.77	40° 32' 12"	146.41	76.43	143.37	S 01° 55' 34" E
C4	481.87	70° 39' 10"	60.27	34.64	56.52	S 13° 05' 55" W

MAP PREPARED BY:
AA SURVEYING SERVICE, INC.
2566 NE Stephens Street
Roseburg, Oregon 97470
Phone: 503 - 672 - 2096

Scale: 1 Inch = 40 Feet