

COUNTY SURVEYORS FILE DATA  
DO NOT REMOVE FROM OFFICE

MAP FILE W 106-6

**MINOR LAND PARTITION IN LOT 11, UNION HEIGHTS HOMESITES IN THE S.E. 1/4, SECTION 8, T.25S., R.5W., W.M., DOUGLAS COUNTY, OREGON**

FILED *TF*  
MAY 12 1988 *✓*

COUNTY CLERK  
DOUGLAS COUNTY, OREGON

**FOR:** ROBERT B. AND LOIS M. MOCK  
579 UNION GAP LOOP RD.  
OAKLAND, OREGON, 97462

**SURVEYOR:** ROBERT L. DOLAN  
RTE. 1, BOX 1820  
SUTHERLIN, OREGON 97479

**DATE:** MARCH, 1988

**SCALE:** 1" = 50'

**WATER SUPPLY:** UNION GAP WATER DISTRICT

**SEWER SUPPLY:** SEPTIC **ZONING:** S.R.

BASE BEARING (PLAT)  
N. 89° 58' E. 304.12'

**Legend:**

○ = FD. 5/8" IRON ROD WITH PUNCH MARK  
IN TOP OR AS NOTED

● = SET 5/8" x 30" IRON ROD W/CAP (LS 1076)

STATE OF OREGON )  
COUNTY OF DOUGLAS ) SS.  
I, GAY FIELDS, COUNTY CLERK AND RECORDER  
OF CONVEYANCES, DO HEREBY CERTIFY THAT  
THIS INSTRUMENT WAS RECORDED

1988 MAY 13 AM 8:46

DOUGLAS COUNTY CLERK  
IN THE OFFICIAL RECORDS OF DOUGLAS COUNTY

BY *Gay Fields*  
DEPUTY  
FEE *paid*

88-065113

REGISTERED  
PROFESSIONAL  
LAND SURVEYOR  
*Robert L. Dolan*  
OREGON  
JULY 30, 1978  
ROBERT L. DOLAN  
1076

**NOTE:**  
- PARCEL FOR WATER  
RESERVOIR ONLY. NO  
RESIDENTIAL USES  
ALLOWED.

**NARRATIVE:**

SURVEY TO MONUMENT PROPERTY CORNERS FROM FOUND CORNERS.

**INSTRUMENTS:**

THEODOLITE, DISTANCE METER

**NOTE:**

WAS UNABLE TO FIND THE BRASS CAP SET IN 1960 FOR THE 1/4 SECTION CORNER FOR SECTIONS 8 AND 9.

**LEGAL DESCRIPTION**

**PARCEL 1**

A PARCEL OF LAND IN LOT 11, UNION HEIGHTS HOMESITES IN THE S.E. 1/4, SECTION 8, T.25S., R.5W., W.M., DOUGLAS COUNTY, OREGON AND BEING MORE PARTICULARLY DESCRIBED AS FOLLOWS:

BEGINNING AT THE N.E. CORNER OF LOT 11, UNION HEIGHTS HOMESITES, THENCE S. 0° 22' 20" E. 40.00 FT. TO A 5/8" IRON ROD, THENCE S. 89° 58' W., 80.00 FT., THENCE N. 0° 22' 20" W. 25.00 FT. TO A 5/8" IRON ROD, THENCE S. 89° 58' W. 174.16 FT. TO A 5/8" IRON ROD, THENCE N. 0° 13' 51" W. 15.00 FT. TO A 5/8" IRON ROD AT THE N.W. CORNER OF SAID LOT 11, THENCE N. 89° 58' E. 254.12 FT. TO THE POINT OF BEGINNING AND CONTAINING 0.13 ACRES MORE OR LESS.

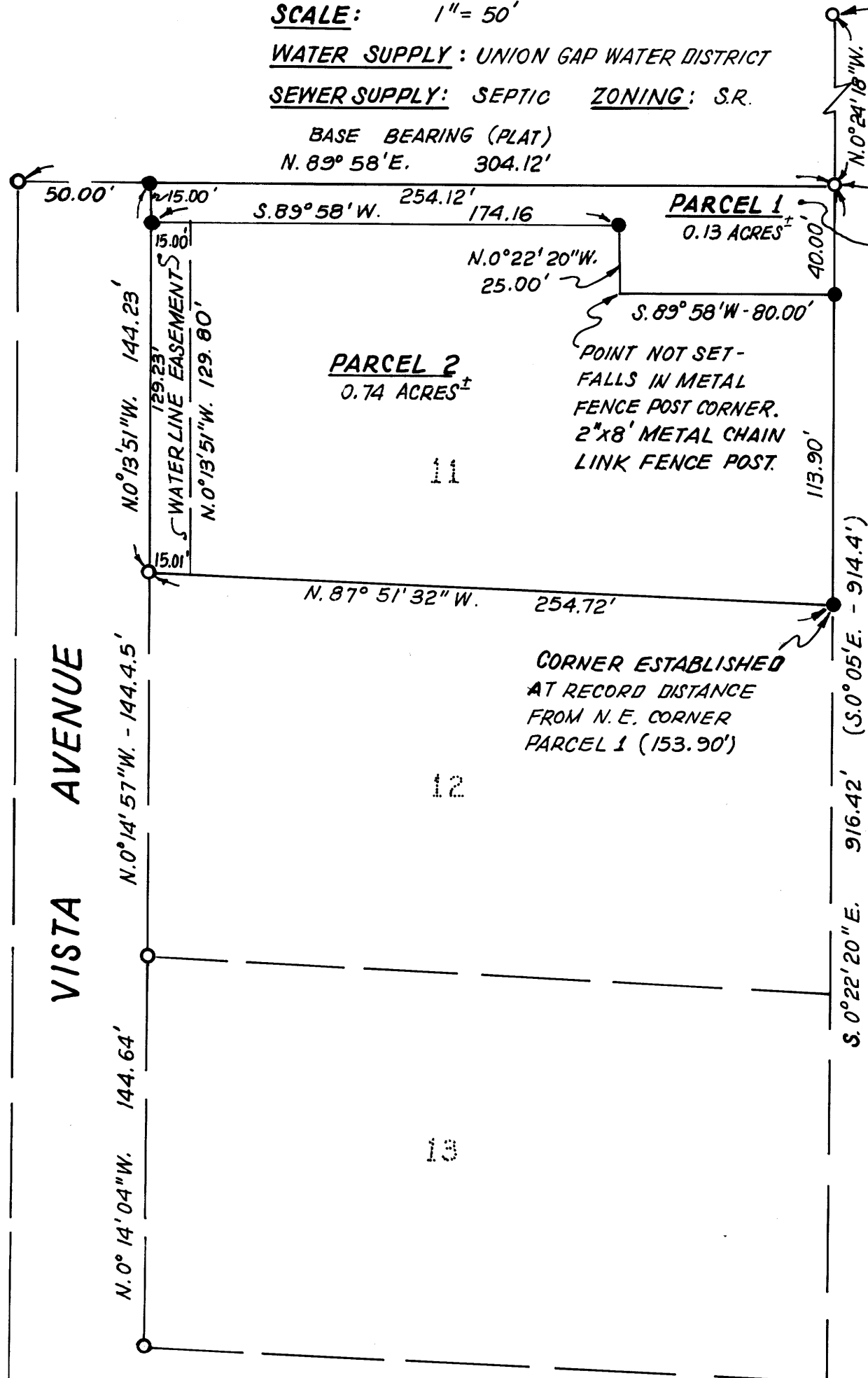
INCLUDES A 15.00 FT. WIDE WATER LINE EASEMENT BEING DESCRIBED AS FOLLOWS:  
BEGINNING AT A 5/8" IRON ROD THAT BEARS S. 89° 58' W. 254.12 FT AND S. 0° 13' 51" E. 15.00 FT. FROM THE N.E. CORNER OF LOT 11, UNION HEIGHTS HOMESITES, THENCE N. 89° 58' E. 15.00 FT. TO A POINT, THENCE S. 0° 13' 51" E. 129.80 FT. TO A POINT, THENCE N. 87° 51' 32" W. 15.01 FT. TO A 1/2" IRON ROD, THENCE N. 0° 13' 51" W. 129.23 FT. TO THE POINT OF BEGINNING.

**PARCEL 2**

A PARCEL OF LAND IN LOT 11, UNION HEIGHTS HOMESITES IN THE S.E. 1/4, SECTION 8, T.25S., R.5W., W.M., DOUGLAS COUNTY, OREGON AND BEING MORE PARTICULARLY DESCRIBED AS FOLLOWS:

BEGINNING AT A 5/8" IRON ROD THAT BEARS S. 0° 22' 20" E. 40.00 FT. FROM THE N.E. CORNER OF LOT 11, UNION HEIGHTS HOMESITES, THENCE S. 0° 22' 20" E. 113.90 FT. TO A 5/8" IRON ROD, THENCE N. 87° 51' 32" W. 254.72 FT. TO A 5/8" IRON ROD, THENCE N. 0° 13' 51" W. 129.23 FT. TO A 5/8" IRON ROD, THENCE N. 89° 58' E. 174.16 FT. TO A 5/8" IRON ROD, THENCE S. 0° 22' 20" E. 25.00 FT. TO A POINT, THENCE N. 89° 58' E. 80.00 FT. TO THE POINT OF BEGINNING AND CONTAINING 0.74 ACRES MORE OR LESS

SUBJECT TO A 15.00 FT. WIDE WATER LINE EASEMENT BEING DESCRIBED AS FOLLOWS:  
BEGINNING AT A 5/8" IRON ROD THAT BEARS S. 89° 58' W. 254.12 FT. AND S. 0° 13' 51" E. 15.00 FT. FROM THE N.E. CORNER OF LOT 11, UNION HEIGHTS HOMESITES, THENCE N. 89° 58' E. 15.00 FT. TO A POINT, THENCE S. 0° 13' 51" E. 129.80 FT. TO A POINT, THENCE N. 87° 51' 32" W. 15.01 FT. TO A 1/2" IRON ROD, THENCE N. 0° 13' 51" W. 129.23 FT. TO THE POINT OF BEGINNING.



**APPROVALS:**  
*Keith A. Cubic* 5/6/88  
PLANNING COMMISSION DATE  
*Lucy E. Monahan* DEPUTY 5-12-88  
COUNTY SURVEYOR DATE

S.E. CORNER LOT 35  
UNION HEIGHTS HOMESITES  
FD. BRASS CAP S. 1/16 BLM 1962  
SECTIONS 8 AND 9 T.25S., R.5W., W.M.  
CAP BEARS S. 47° 47' 14" W. 1.02 FT.  
FROM FD. 1/2" IRON ROD WITH  
PUNCH MARK IN TOP

*APR 10 - 1988*  
*61*