

**COUNTY SURVEYORS FILE DATA**  
**DO NOT REMOVE FROM OFFICE**

DAM CONTROL SURVEY  
MILLTOWN HILL RESERVOIR

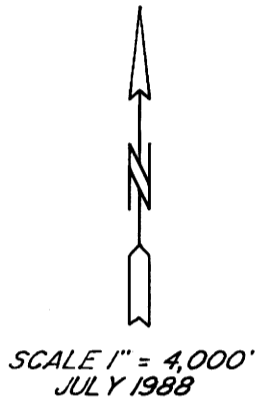
T22S, R4W, W.M., SECTIONS 31, 32, 33 AND 35  
T23S, R4W, W.M., SECTIONS 1, 8, 20, 21, 23, 27, 32, AND 35

FILED  
 COUNTY SURVEYORS OFFICE

Computations for the project used OCS 27 and received corrections for Second Class, Second Order. The basis of bearing was computed from two control stations ADAM and EDEN, rated 1/25,000.

Distance reductions were controlled with leveled elevations for ADAM, EDEN, Co. Rd. #8 Con.Mon.#3, Panel 1-7-10, Panel 1-3-10 and Panel 1-7-20. The initial check into published coordinates for Con.Mon.#3 missed by 2.1 feet in northing and 0.3 feet in easting. Adjusting into these coordinates resulted in poor closures for several figures of the control traverse which otherwise close well. The published coordinates for Con.Mon.#3 resulted from a dead end tie from Red.Ecc. and involved one leg approximately East 19,500 feet; the total length of the traverse was approximately 27,000 feet. A small angular problem in the easterly leg could easily account for the 2.1 feet miss in northings. The Milltown Hill work had many cross checks available and I judged it more reliable than the coordinates for Con.Mon. #3.

Computations involved several figures with closures: 1/218,000, 1/145,000, 1/108,000, 1/62,000, and 1/42,000. An overall check between points at opposite ends of the project separated by several figures was 1/242,000. The resulting adjusted coordinates for Con.Mon.#3 missed the published coordinates by 1.6 feet in northings and 0.0 feet in eastings.

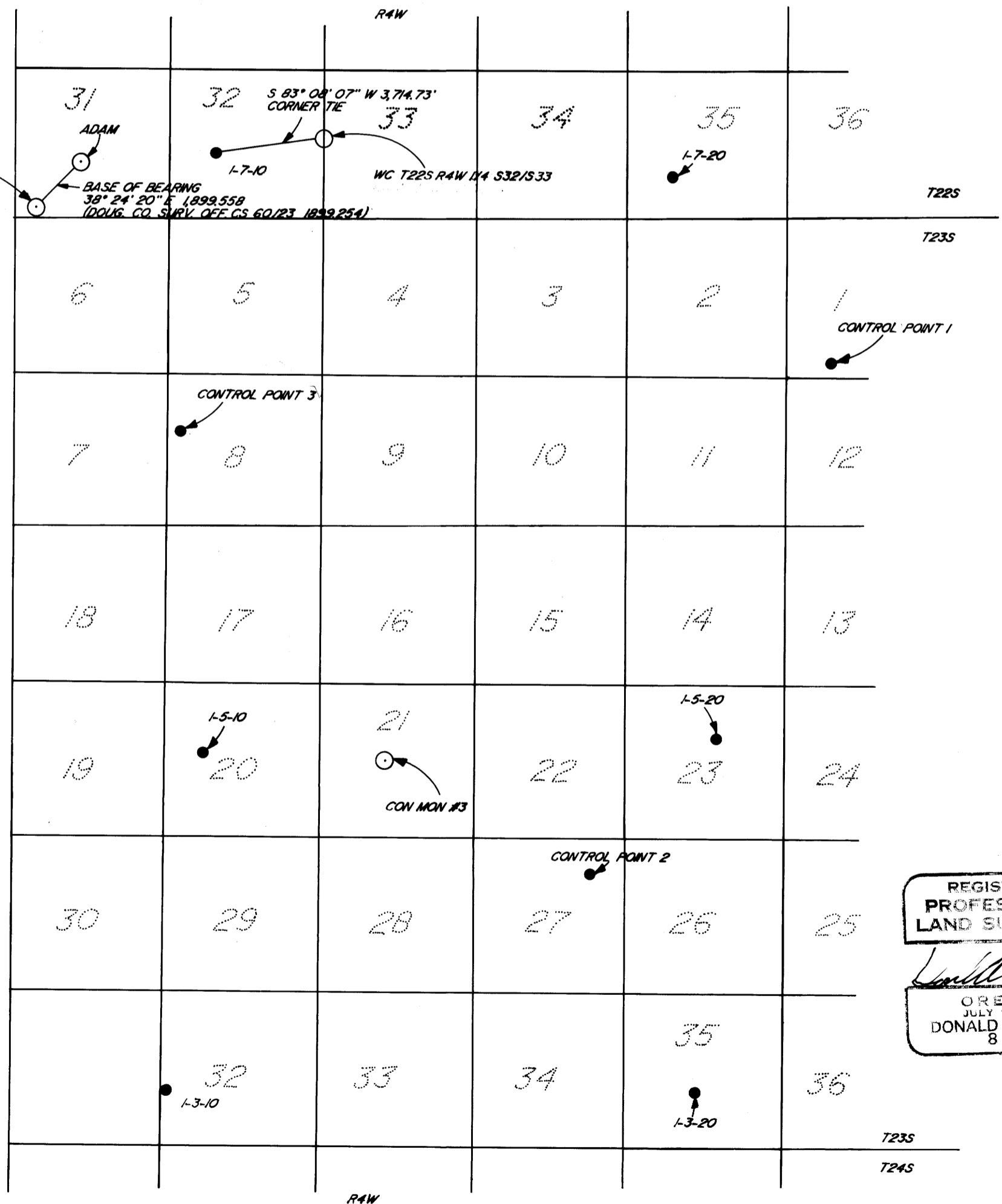


● - SET 5/8" x 30" I.R. WITH PLASTIC CAP MKD. "BENTZ SURV. INC." AND 6" ALUMINUM GUARD POST.

○ - FOUND BRASS CAP AS NOTED

- ADAM N = 720,420,570  
E = 1280,551,610
- EDEN N = 718,932,250  
E = 1279,371,750
- 1-7-10 N = 720,314,651  
E = 1285,142,322
- 1-7-20 N = 719,791,039  
E = 1300,970,239
- 1-5-10 N = 699,642,586  
E = 1285,179,978
- 1-5-20 N = 700,499,912  
E = 1302,937,593
- 1-3-10 N = 687,988,442  
E = 1284,153,046
- 1-3-20 N = 688,338,149  
E = 1302,408,907

- WC TO 1/4 S32/S33 N = 720,822,969  
E = 1288,822,104
  - CONTROL POINT 1 N = 713,655,638  
E = 1306,256,237
  - CONTROL POINT 2 N = 695,921,689  
E = 1298,791,417
  - CONTROL POINT 3 N = 710,626,013  
E = 1283,033,704
  - CONC. MON #3 N = 699,414,995  
E = 1291,359,849
- PUBLISHED PER DOUG. CO. SURVEYORS OFFICE 1974
- N = 699,413,414  
E = 1291,359,950



REGISTERED PROFESSIONAL LAND SURVEYOR

*Donald A. Bentz*

OREGON  
 JULY 12, 1968  
 DONALD A. BENTZ  
 839