

**SURVEY FOR DOUGLAS COUNTY BOARD OF COMMISSIONERS
IN SW 1/4 SEC. 18 & NW 1/4 SEC. 19 T 26S, R 5 W AND THE
SE 1/4 SEC. 13 & NE 1/4 SEC. 24 T26S, R 6 W, W.M.**

**COUNTY SURVEYORS FILE DATA
DO NOT REMOVE FROM OFFICE**

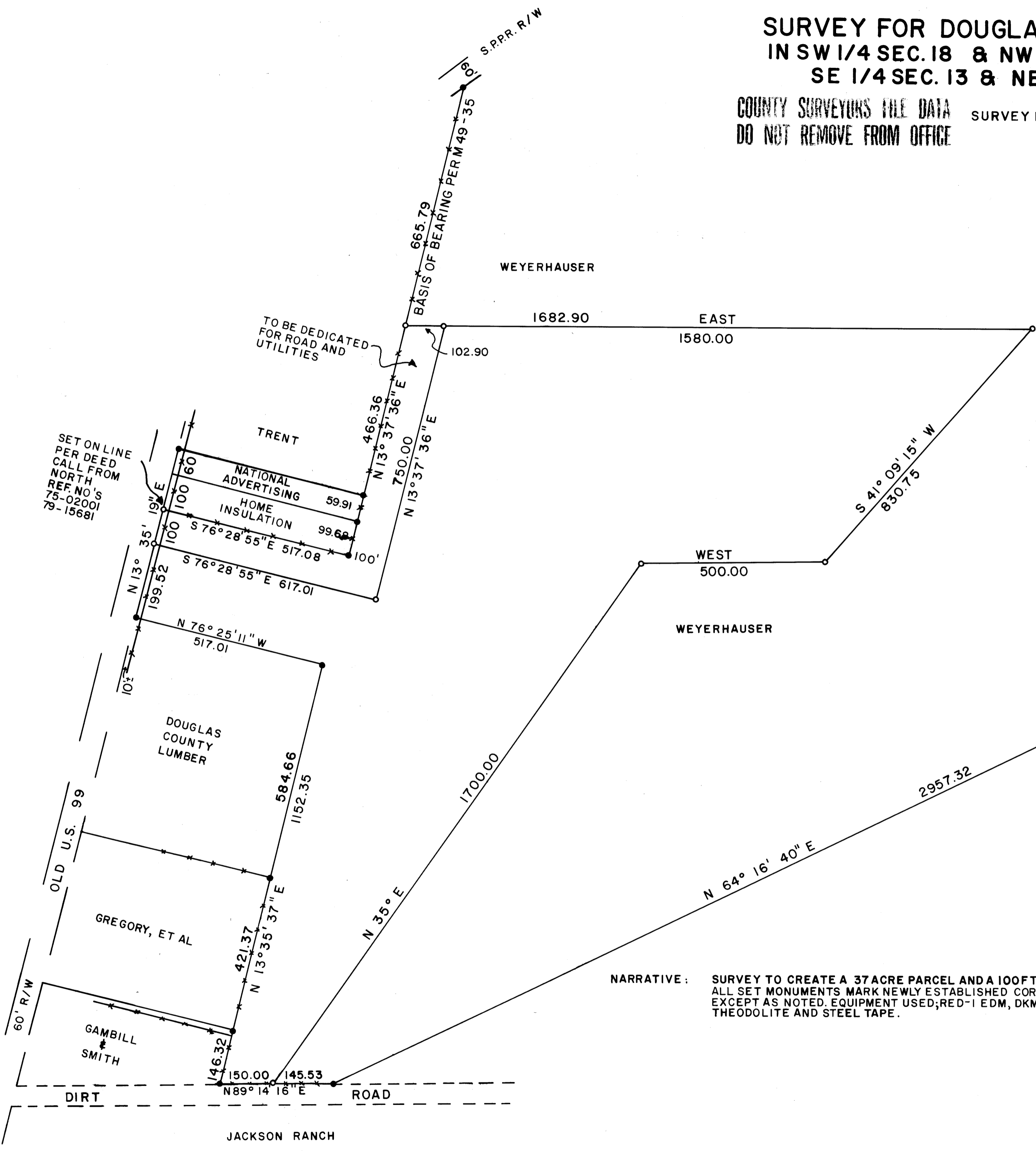
SURVEY BY FRITZ INGRAM, COUNTY SURVEYOR
AUGUST 1988

FILED

AUG 9 1988

COUNTY SURVEYOR
DOUGLAS COUNTY, ORE.

C.S. File No. 62/56
M106-53



NORTH
1" = 200'

⊙ S.E. CORNER OF THE
J.L. CLINKINBEARD
D.L.C. NO. 46
T26S, R5W, W.M.
SEE C.S. FILE 62/55
RENEWAL NO. 157

LEGEND

- FOUND 5/8" IRON ROD
- SET 5/8" x 30" IRON ROD W/ALUMINIUM CAP STAMPED "DOUGLAS CO. SURVEYOR"
- ⊙ FOUND BRASS CAP

NARRATIVE: SURVEY TO CREATE A 37 ACRE PARCEL AND A 100 FT. ROADWAY. ALL SET MONUMENTS MARK NEWLY ESTABLISHED CORNERS EXCEPT AS NOTED. EQUIPMENT USED; RED-1 EDM, DKM2AE THEODOLITE AND STEEL TAPE.

REGISTERED
PROFESSIONAL
LAND SURVEYOR

Francis L. Ingram

OREGON
JULY 11, 1968
FRANCIS L. INGRAM
902

C.S. File No. 62/56
M106-53

CS FILE NOT SCANNED

SUPPORT DATA FOR SURVEY