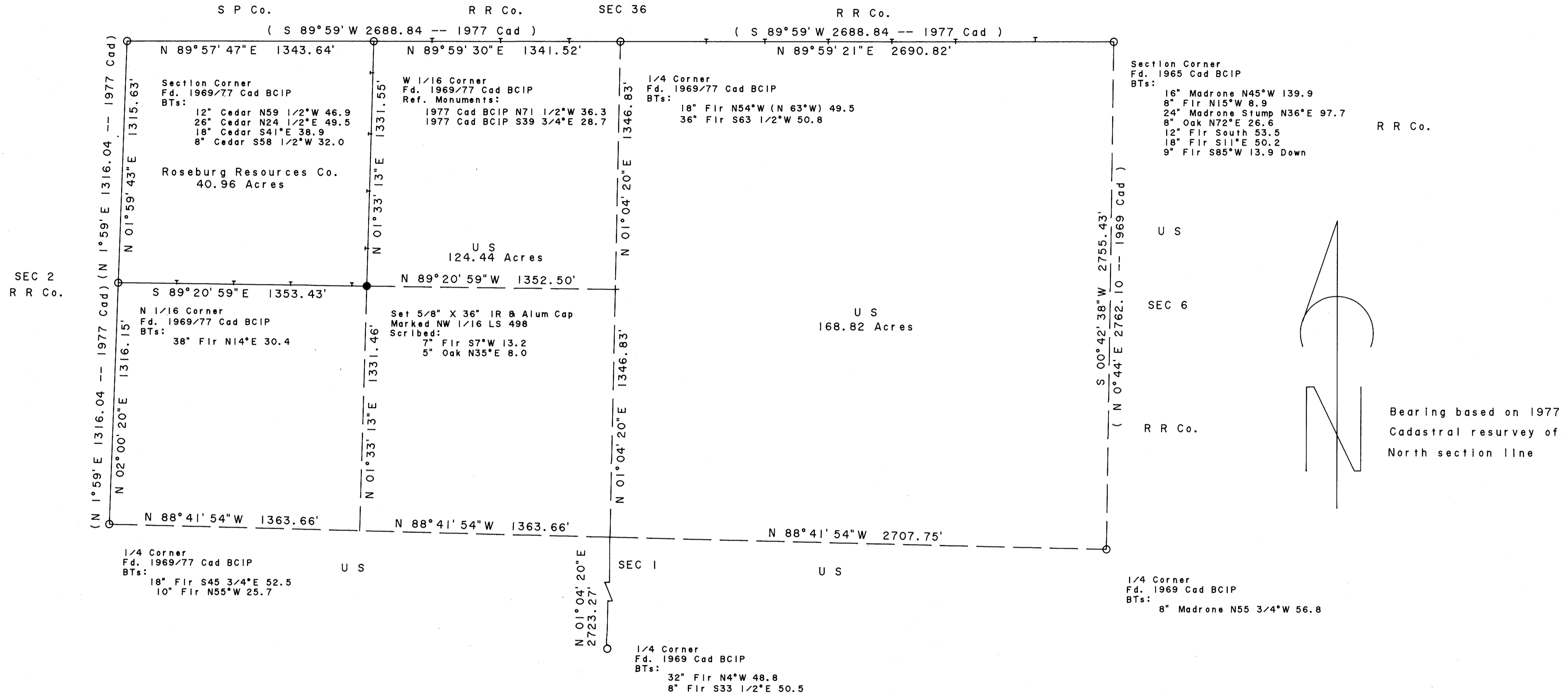


FILED
AUG 5 1988
COUNTY SURVEYOR
DOUGLAS COUNTY, ORE.

RESURVEY AND SUBDIVISION OF NW 1/4 SEC 1, T31S, R7W, W.M., OREGON
FOR ROSEBURG RESOURCES COMPANY SCALE: 1" = 400' JUNE 24, 1988



I ran a closed traverse in Section 1 using a Nikon NTD 4 total station. I achieved a precision of 1 : 42,912 and adjusted the traverse by the Crandall method. I set the corners by standard subdivision procedure based on the location of the existing monuments.
Howard W. Johnstone P. O. Box 1088 Roseburg, Oregon

LEGEND

- Monument Found as Noted
- Set 5/8" Iron Rod & Alum Cap Section or Property Line
- Subdivision or Calculated Line
- - - Line Referenced to Alum Tags Record Data

REGISTERED PROFESSIONAL LAND SURVEYOR

Howard W. Johnstone

OREGON
MAY 13, 1980
HOWARD W. JOHNSTONE
498

MAP FILE M106-52

MAP FILE M106-52