

FILED
AUG 5 1988
COUNTY SURVEYOR
DOUGLAS COUNTY, ORE.

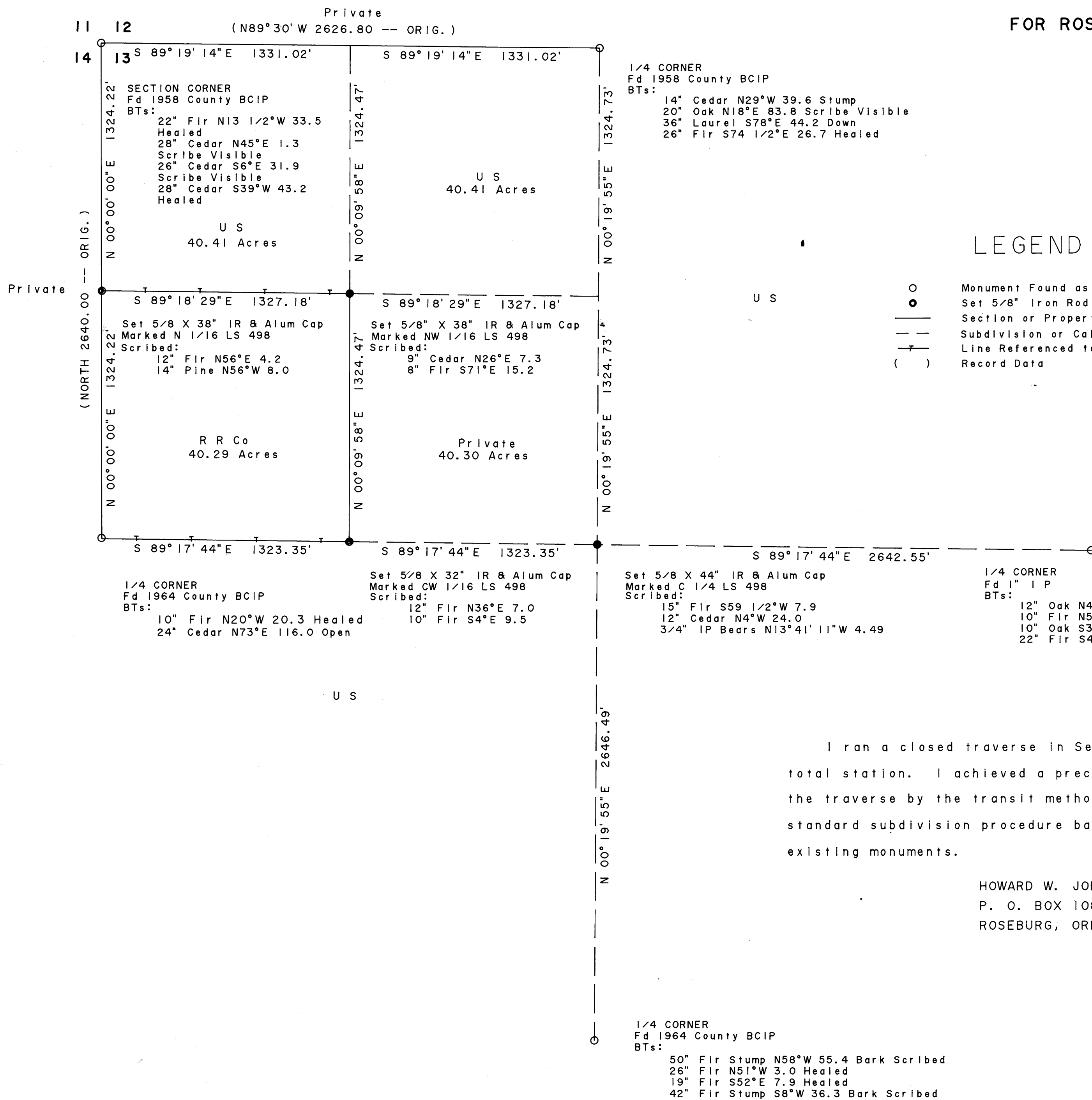
M106-51

RESURVEY AND SUBDIVISION OF NW 1/4 SECTION 13, T30S, R9W, W.M.

FOR ROSEBURG RESOURCES COMPANY

JULY 22, 1988

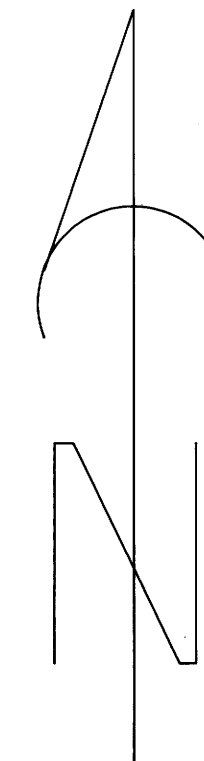
SCALE: 1" = 400'



LEGEND

- Monument Found as Noted
- Set 5/8" Iron Rod & Alum Cap
- Section or Property Line
- - - Subdivision or Calculated Line
- T - Line Referenced to Alum Tags
- () Record Data

Bearing based on original survey of West section line



I ran a closed traverse in Section 13 using a Nikon NTD 4 total station. I achieved a precision of 1:108601 and adjusted the traverse by the transit method. I set the corners by standard subdivision procedure based on the location of the existing monuments.

HOWARD W. JOHNSTONE
P. O. BOX 1088
ROSEBURG, OREGON

REGISTERED
PROFESSIONAL
LAND SURVEYOR

Howard W. Johnstone

OREGON
MAY 13, 1980
HOWARD W. JOHNSTONE
498

M106-51