

RESURVEY AND SUBDIVISION OF
 W 1/2 SEC 4, T32S, R5W, W.M.
 FOR ROSEBURG RESOURCES CO. JULY 8, 1988

FILED

AUG 5 1988

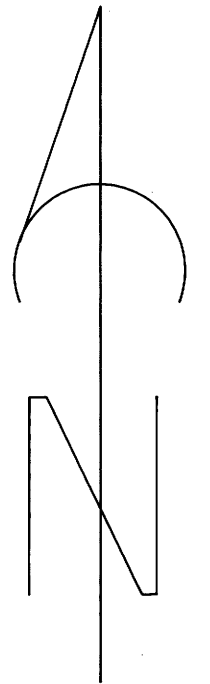
COUNTY SURVEYOR
 DOUGLAS COUNTY, ORE.

SCALE: 1" = 400'

LEGEND

- O Monument Found as Noted
- Set 5/8" Iron Rod & Alum Cap
- Section or Property Line
- - - Subdivision or Calculated Line
- |- Line Referenced to Alum Tags
- () Record Data

Bearing based on 1962 Cadastral
 resurvey of S 1/2 of West line



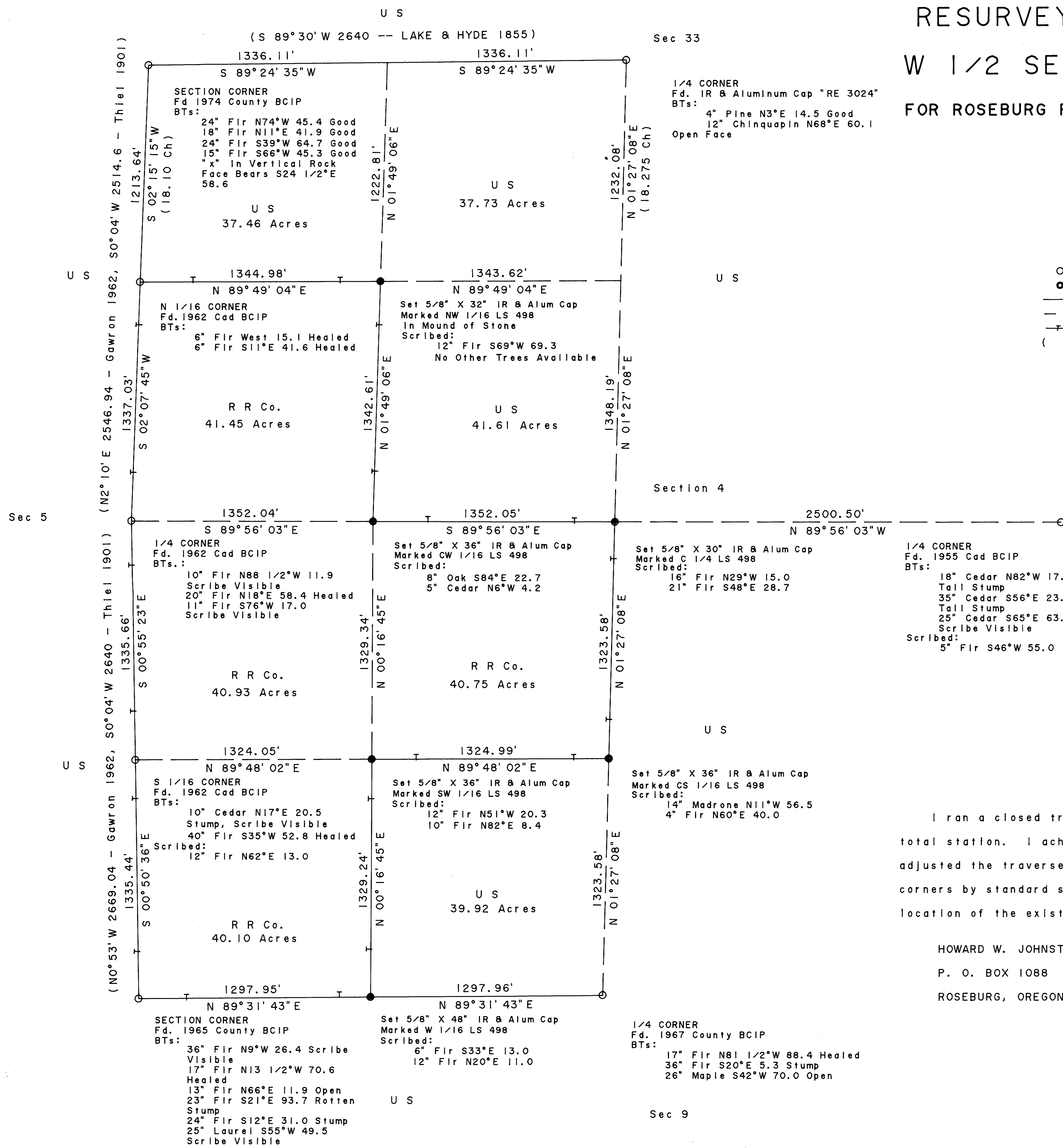
I ran a closed traverse in Section 4 using a Nikon NTD 4 total station. I achieved a precision of 1:71386 and adjusted the traverse by the transit method. I set the corners by standard subdivision procedure based on the location of the existing monuments.

HOWARD W. JOHNSTONE
 P. O. BOX 1088
 ROSEBURG, OREGON

REGISTERED
 PROFESSIONAL
 LAND SURVEYOR

Howard W. Johnston

OREGON
 MAY 13, 1980
 HOWARD W. JOHNSTONE
 498



MAP FILE M106-50

MAP FILE M106-50