

866-901W

COUNTY SURVEYORS FILE DATA  
DO NOT REMOVE FROM OFFICE

FILED

AUG 4 1988

MINOR LAND PARTITION

IN THE S.W. 1/4, SECTION 2, T.28S., R.6W., WILLAMETTE MER.  
DOUGLAS COUNTY, OREGON

COUNTY SURVEYOR  
DOUGLAS COUNTY, ORE.

JULY 1988

NARRATIVE

Purpose:

To partition the lands shown on the annexed plat and described in Deed Reference No.'s 286716, 330093 and 65-15066.

Procedure

The right-of-way of County Road No. 16 was determined using the found monuments on the northwest right-of-way line, the center of the as-built traveled way and the record centerline radius per Douglas County Public Works Map.

The northeast line of Parcel 2 was established by using record distance along the south westerly boundary of Lot 1, Block 1, South-View Subdivision and using a bearing through the remnants of an old fence line.

STATE OF OREGON )  
COUNTY OF DOUGLAS ) SS.  
I, GAY FIELDS, COUNTY CLERK AND RECORDER  
OF CONVEYANCES, DO HEREBY CERTIFY THAT  
THIS INSTRUMENT WAS RECORDED

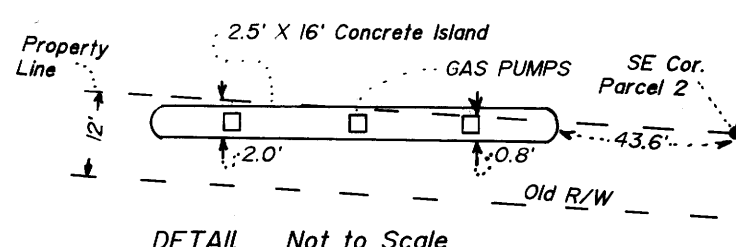
1988 AUG -8 AM 11: 44

GAY FIELDS  
DOUGLAS COUNTY CLERK  
IN THE OFFICIAL RECORDS OF DOUGLAS COUNTY

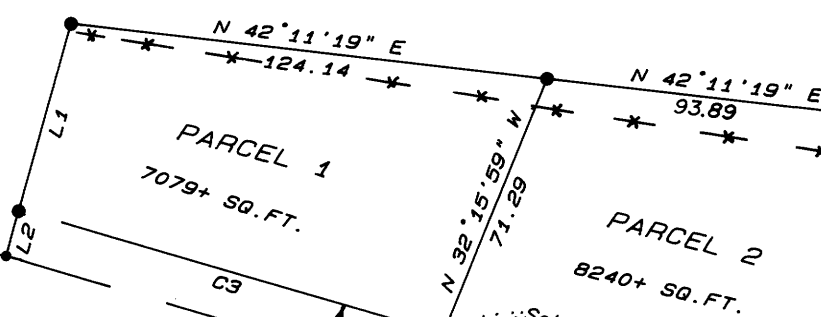
BY Challenga  
DEPUTY

FEE prepaid

REGISTERED  
PROFESSIONAL  
LAND SURVEYOR  
Mark A. Heimburger  
OREGON  
JULY 16, 1987  
MARK A. HEIMBURGER  
2287



PARCEL 3  
22.1 Acres ±



BASIS of BEARINGS per SOUTHVIEW SUBDIVISION (N 38° 40' E)

N 38° 40' 00" E - 204.16  
122.00 Found 5/8" Rebar and "AA SURVEY" Cap (122.5)  
82.16 (82.16)

SOUTH-VIEW SUBDIVISION  
BLOCK 1

COUNTY ROAD NO. 16  
(INST. No. 88-10999)

LINE	BEARING	DISTANCE
L1	N 38° 43' 27" W	50.63
L2	N 38° 43' 27" W	12.01
L3	N 44° 46' 46" W	12.16

SCALE : 1 inch = 50 feet

LEGEND

- Found 1/2" Iron Pipe unless noted
- Set 5/8" X 30" Iron Rod with plastic cap marked "AA SURVEYING SERVICE INC." or as noted.
- Calculated point
- ( ) Record information per Southview Subdivision
- (( )) Record information per M 106-17
- \*— Fence

CURVE	RADIUS	DELTA	LENGTH	TANGENT	CHORD	CHORD/BRG
C1	1,432.40	12° 08' 03"	303.36	152.25	302.79	N 48° 25' 14" E
C2	1,474.40	00° 41' 13"	17.68	8.84	17.68	S 54° 08' 39" W
C3	1,474.40	04° 27' 12"	114.60	57.33	114.57	S 51° 34' 26" W
C4	1,462.40	05° 09' 22"	131.60	65.85	131.56	S 51° 54' 34" W

Pl. 10-89 79B