

SECTION CORNER 27, 28, 33, 34
 FND.: 1-1/4" IRON PIPE WITH DOUGLAS CO. BRASS CAP
 6" FIR, N70-1/2E, 20.9' - CLOSED FACE
 18" FIR, S48-3/4E, 55.1' - CLOSED FACE
 24" FIR, S70W, 7.8' - CLOSED FACE
 12" FIR, N62W, 28.2' - CLOSED FACE
 36" FIR STUMP, N44-1/4W, 14.7' - ORIG. B.T.

WEST 1/16 CORNER 27 & 34
 SET: 2"X 42" IRON PIPE WITH BRASS CAP
 40" FIR, N43E, 3.6' - SCRIBED "W1/16 S27BT"
 13" CEDAR, S12E, 23.2' - SCRIBED "W1/16 S34BT"

1/4 CORNER 27 & 34
 SET: 2"X 42" IRON PIPE WITH BRASS CAP
 10" WHITE FIR, N40W, 20.7' - SCRIBED "1/4 S27BT"
 10" FIR, S52W, 27.4' - SCRIBED "1/4 S34BT"

SECTION CORNER 26, 27, 34, 35
 FND.: U.S.B.L.M. 2-1/2" IRON PIPE WITH BRASS CAP DATED 1958
 29" WHITE FIR, N66E, 63.7' - CLOSED FACE
 40" FIR STUMP, N86-1/4E, 25.1'
 52" FIR, S79-3/4E, 25.4' - BARK SCRIBED
 39" FIR, S64-1/4W, 13.4' - BARK SCRIBED
 7" WHITE FIR, N55-1/2W, 49.0' - CLOSED FACE
 7" CHINQUAPIN, N22W, 36.0' - SCRIBE VISIBLE

FILED
 AUG 3 1988
 COUNTY SURVEYOR
 DOUGLAS COUNTY, ORE

N 1/16 CORNER 33 & 34
 SET: 2"X 41" IRON PIPE WITH BRASS CAP
 17" FIR, N63E, 24.1'
 SCRIBED "N1/16 S34 BT"
 16" WHITE FIR, N41W, 12.4'
 SCRIBED "N1/16 S33BT"

NW 1/16 CORNER SECTION 34
 SET: 2"X 42" IRON PIPE WITH BRASS CAP
 17" HEMLOCK, N50E, 7.7'
 SCRIBED "NW1/16 S34 BT"
 17" FIR, S67E, 14.0'
 SCRIBED "NW1/16 S34 BT"

1/4 CORNER 33 & 34
 SET: 2"X 42" IRON PIPE WITH BRASS CAP
 10" FIR, N57E, 7.8'
 SCRIBED "1/4 S34 BT"
 14" FIR, N0-1/2W, 15.5'
 SCRIBED "1/4 S33 BT"
 NOTE: 30" CEDAR STUMP (UNKNOWN ORIGIN)
 OPENED TO VISIBLE SCRIBING
 BEARS S22°13'18"E, 25.5'
 (APPROX. 70 YEARS OF OVERGROWTH)

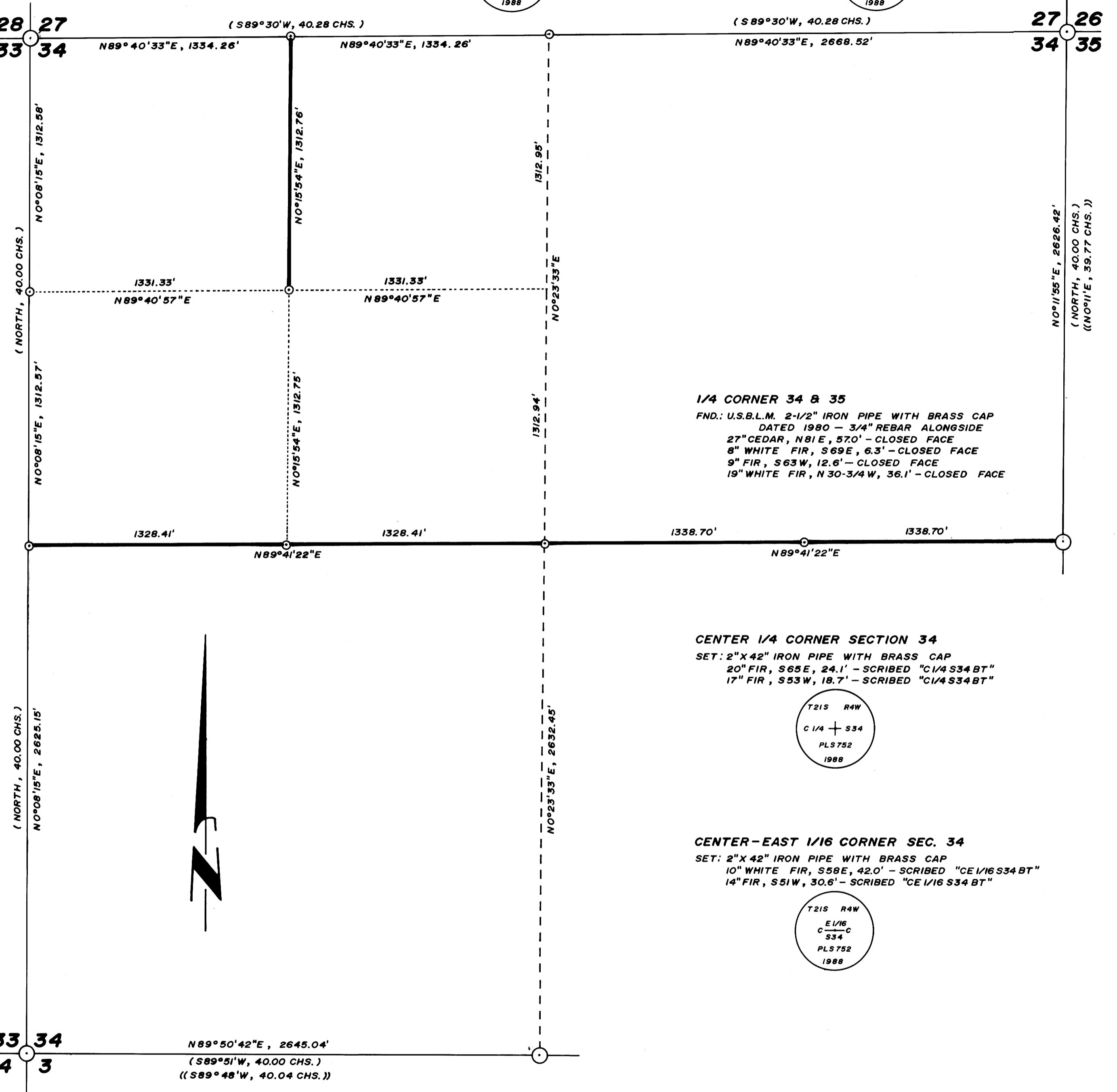
CENTER-WEST 1/16 CORNER SEC. 34
 SET: 2"X 42" IRON PIPE WITH BRASS CAP
 16" FIR, N26W, 25.4'
 SCRIBED "CW1/16 S34 BT"
 23" HEMLOCK, S64W, 29.2'
 SCRIBED "CW1/16 S34 BT"

1/4 CORNER 34 & 3
 FND.: U.S.B.L.M. 2-1/2" IRON PIPE WITH BRASS CAP DATED 1980
 17" WHITE FIR, N2-1/2E, 47.2' - SCRIBE VISIBLE
 (RECORD: NORTH, 47-1/2 LKS.)
 20" WHITE FIR, S14-1/2E, 44.9' - SCRIBE VISIBLE
 (RECORD: S18-1/2W, 70 LKS.)

1/4 CORNER 34 & 35
 FND.: U.S.B.L.M. 2-1/2" IRON PIPE WITH BRASS CAP
 DATED 1980 - 3/4" REBAR ALONGSIDE
 27" CEDAR, N81E, 57.0' - CLOSED FACE
 8" WHITE FIR, S69E, 6.3' - CLOSED FACE
 9" FIR, S63W, 12.6' - CLOSED FACE
 19" WHITE FIR, N30-3/4W, 36.1' - CLOSED FACE

CENTER 1/4 CORNER SECTION 34
 SET: 2"X 42" IRON PIPE WITH BRASS CAP
 20" FIR, S65E, 24.1' - SCRIBED "C1/4 S34 BT"
 17" FIR, S53W, 18.7' - SCRIBED "C1/4 S34 BT"

CENTER-EAST 1/16 CORNER SEC. 34
 SET: 2"X 42" IRON PIPE WITH BRASS CAP
 10" WHITE FIR, S58E, 42.0' - SCRIBED "CE1/16 S34 BT"
 14" FIR, S51W, 30.6' - SCRIBED "CE1/16 S34 BT"



-NARRATIVE-

THIS SURVEY WAS MADE IN JUNE AND JULY, 1988 BY DONALD L. PEEL OF PEEL BAKER LAND SURVEYING INC., 1262 LAWRENCE ST. - SUITE 4, EUGENE, OREGON. THE PURPOSE OF THIS SURVEY WAS TO LOCATE AND MARK SOME OF THE PROPERTY LINES OF THE LAND OWNED BY WEYERHAEUSER COMPANY IN SEC. 34, T21S, R4W, W.M.. A WILD T1000 THEOMAT AND D155 E.D.M. WERE USED TO PERFORM THIS SURVEY. CLOSED RANDOM TRAVERSES WERE RUN BETWEEN FOUND CORNERS FOR CONTROL. BEARINGS WERE BASED ON A SOLAR OBSERVATION. OFFSETS FROM THE RANDOM TRAVERSE LINE TO THE TRUE PROPERTY LINE WERE CALCULATED AND USED TO DETERMINE THE POSITION OF THE TRUE LINE. THE TRUE PROPERTY LINE WAS MARKED IN THE FIELD BY BLAZING TREES (BLAZES NOTCHED AND PAINTED RED) ON BOTH SIDES OF THE TRUE LINE. THE NORTH 1/4 CORNER WAS SET AT MIDPOINT BETWEEN THE NORTHEAST AND NORTHWEST SECTION CORNERS. THE WEST 1/4 CORNER WAS SET AT MIDPOINT BETWEEN THE SOUTHWEST AND NORTHWEST SECTION CORNERS. THE WEST 1/16 CORNER (NORTH LINE) WAS SET AT MIDPOINT BETWEEN THE NORTH 1/4 CORNER AND THE NORTHWEST SECTION CORNER. THE NORTH 1/16 CORNER (WEST LINE) WAS SET AT MIDPOINT BETWEEN THE WEST 1/4 CORNER AND THE NORTHWEST SECTION CORNER. THE CENTER 1/4 CORNER WAS SET AT THE POINT OF INTERSECTION OF THE NORTH-SOUTH AND EAST-WEST CENTERLINES. THE CENTER-EAST 1/16 CORNER WAS SET AT MIDPOINT BETWEEN THE EAST 1/4 CORNER AND THE CENTER 1/4 CORNER. THE CENTER-WEST 1/16 CORNER WAS SET AT MIDPOINT BETWEEN THE CENTER 1/4 CORNER AND THE WEST 1/4 CORNER. THE NORTHWEST 1/16 CORNER WAS SET AT THE POINT OF INTERSECTION OF THE NORTH-SOUTH AND EAST-WEST CENTERLINES OF THE NORTHWEST 1/4. ALL CORNERS SET IN THIS SURVEY WERE MONUMENTED AS NOTED ON THIS PLAT. FOR ALL BEARING TREES MARKED IN THIS SURVEY, THE DISTANCE WAS MEASURED FROM THE CORNER TO A "W" NAIL DRIVEN IN THE LOWER BLAZE AND THE BEARINGS ARE MAGNETIC, VARIATION 20°.

REGISTERED
 PROFESSIONAL
 LAND SURVEYOR
 Donald L. Peel
 OREGON
 JULY 6, 1966
 DONALD L. PEEL
 752

- BASIS OF BEARING :** SOLAR OBSERVATION
SCALE : 1" = 400'
- CORNERS FOUND
 - ⊙ CORNERS SET THIS SURVEY
 - PROPERTY LINE BLAZED
 - () RECORD BEARING AND DISTANCE, G.L.O. 1855
 - (()) RECORD BEARING AND DISTANCE, B.L.M. 1980

**SURVEY IN
 N 1/2 SECTION 34, T21S, R4W, W.M.
 DOUGLAS COUNTY, OREGON**
 FOR
WEYERHAEUSER COMPANY
 BY
PEEL BAKER LAND SURVEYING INC.
 JULY 13, 1988

COUNTY SURVEYORS FILE DATA
 DO NOT REMOVE FROM OFFICE

M 106-48

M 106-48