

FILED

MAY 1988

COUNTY SURVEYOR
DOUGLAS COUNTY, OREGON

SECTION CORNER 15, 16, 21, 22

FOUND: 5/8" REBAR (C.S. NO. M89-25)

- 24" FIR, N68-3/4E, 60.9' - SCRIBE VISIBLE
- 16" FIR, S72-1/4E, 12.3' - SCRIBE VISIBLE
- 20" FIR, S36-3/4W, 28.7' - CLOSED FACE
- 21" FIR, N46-3/4W, 10.0' - CLOSED FACE

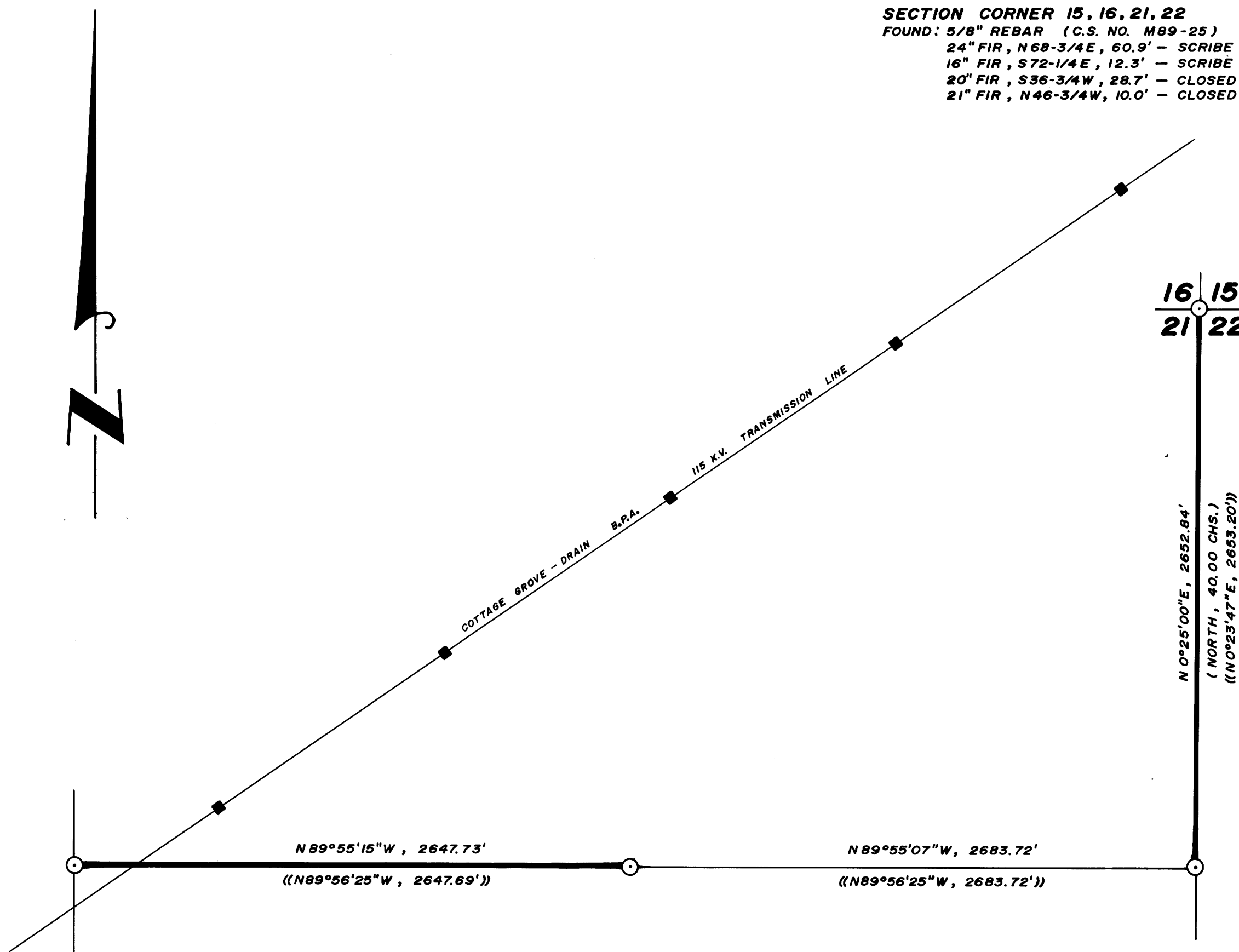
- NARRATIVE -

THIS SURVEY WAS MADE IN MARCH AND APRIL, 1988 BY DONALD L. PEEL OF PEEL BAKER LAND SURVEYING INC., 1262 LAWRENCE - SUITE 4, EUGENE, OREGON. THE PURPOSE OF THIS SURVEY WAS TO LOCATE AND MARK THE NORTH HALF OF THE EAST LINE AND THE WEST HALF OF THE EAST-WEST CENTERLINE OF SECTION 21, T21S, R4W, W.M.. A WILD T1000 THEOMAT AND DISS E.D.M. WERE USED TO PERFORM THIS SURVEY. A CLOSED RANDOM TRAVERSE WAS RUN BETWEEN FOUND CORNERS FOR CONTROL. BEARINGS WERE BASED ON A SOLAR OBSERVATION. OFFSETS FROM THE RANDOM TRAVERSE LINE TO THE TRUE PROPERTY LINE WERE CALCULATED AND USED TO DETERMINE THE POSITION OF THE TRUE LINE. THE TRUE PROPERTY LINE WAS MARKED IN THE FIELD BY BLAZING TREES (BLAZES NOTCHED AND PAINTED RED) ON BOTH SIDES OF THE TRUE LINE. NO CORNERS WERE SET AND NO BEARING TREES WERE MARKED IN THIS SURVEY.

REGISTERED
PROFESSIONAL
LAND SURVEYOR

Donald L. Peel

OREGON
JULY 8, 1966
DONALD L. PEEL
752



1/4 CORNER 20 & 21

FOUND: 1-1/4" IRON PIPE WITH DOUGLAS COUNTY BRASS CAP DATED 1964
29" FIR, S39-1/2E, 34.9' - CLOSED FACE
19" FIR, N16W, 7.0' - CLOSED FACE

CENTER 1/4 CORNER SECTION 21

FOUND: 5/8" REBAR AND 2" X 2" WHITE POST (C.S. NO. M89-25)
21" FIR, N40-3/4W, 13.6' - NEARLY CLOSED FACE
14" W. FIR, S47-1/2W, 6.0' - NEARLY CLOSED FACE

1/4 CORNER 21 & 22

FOUND: 5/8" REBAR (C.S. NO. M89-25)
18" FIR, N72-1/4W, 64.3' - SCRIBE VISIBLE
12" FIR, N38E, 16.5' - SCRIBE VISIBLE
NOTE: 1" IRON PIPE OF UNKNOWN ORIGIN BEARS S41°19'07"W, 12.28'

BASIS OF BEARING: SOLAR OBSERVATION

SCALE: 1" = 500'

- CORNERS FOUND
- PROPERTY LINE BLAZED
- ■ — POWER LINE
- () RECORD DATA G.L.O. 1856
- (()) RECORD DATA C.S. NO. M89-25

**SURVEY IN
N 1/2 SECTION 21, T 21S, R 4W, W.M.
DOUGLAS COUNTY, OREGON**

FOR
WEYERHAEUSER COMPANY
BY
PEEL BAKER LAND SURVEYING INC.
APRIL 5, 1988

COUNTY SURVEYORS FILE DATA
DO NOT REMOVE FROM OFFICE

MAP FILE M106-3

MAP FILE M106-3