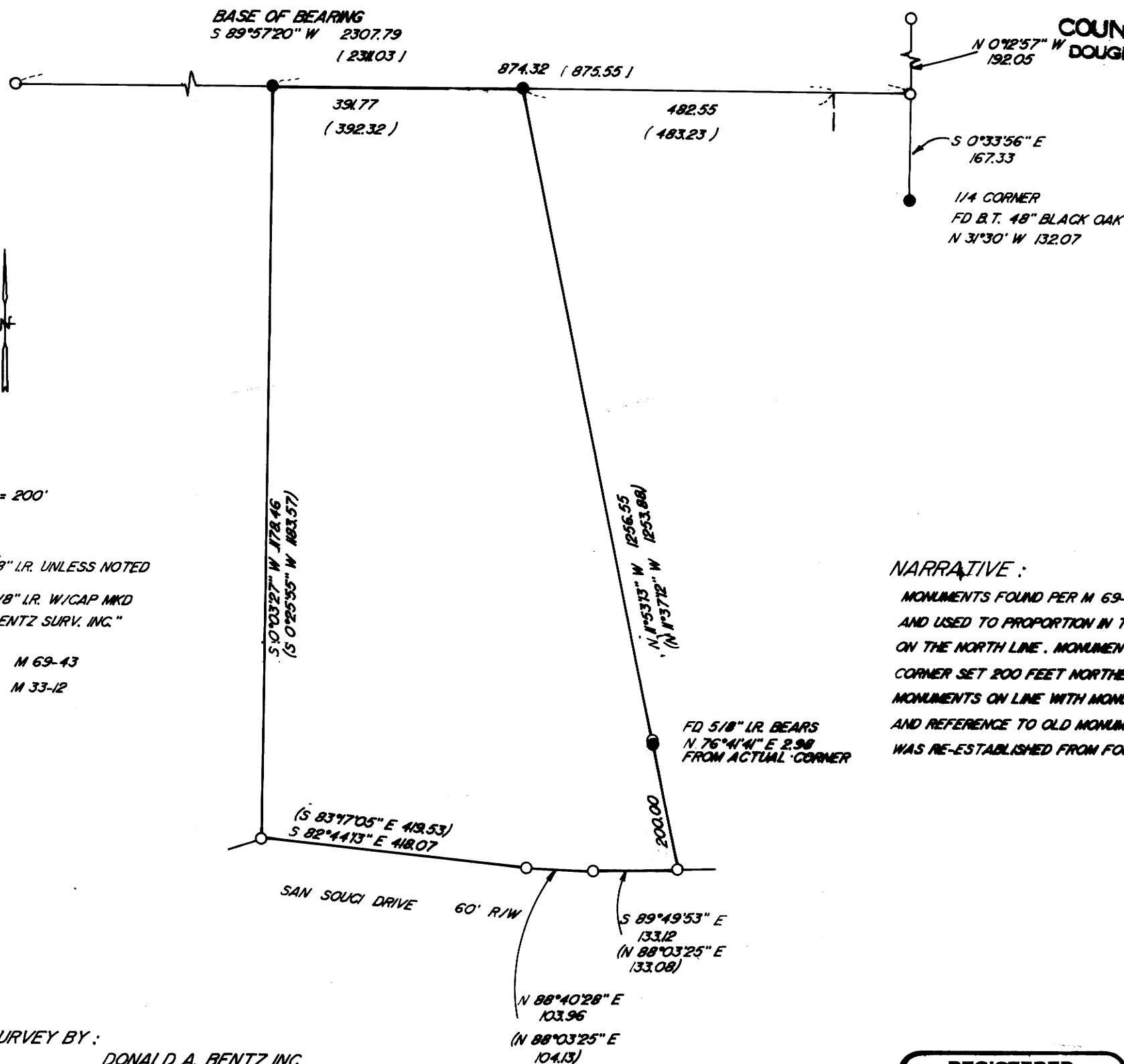


SURVEY FOR STEVE LAWNICKI
IN NE 1/4 & SE 1/4 SEC. 17, T 27 S, R 6 W, W.M.

FILED

JUN 6 1988

COUNTY SURVEYOR
DOUGLAS COUNTY, ORE.



SCALE: 1" = 200'
MAY 1988

○ FD 5/8" I.R. UNLESS NOTED

● SET 5/8" I.R. W/CAP MKD
"BENTZ SURV. INC."

(RECORD) M 69-43

(RECORD) M 33-12

NARRATIVE:

MONUMENTS FOUND PER M 69-43 AND M 33-12
AND USED TO PROPORTION IN TWO MONUMENTS
ON THE NORTH LINE. MONUMENTS AT SOUTHEASTERLY
CORNER SET 200 FEET NORTHERLY OF FOUND
MONUMENTS ON LINE WITH MONUMENTS TO NORTH
AND REFERENCE TO OLD MONUMENT. 1/4 CORNER
WAS RE-ESTABLISHED FROM FOUND WITNESS TREE

SURVEY BY:

DONALD A. BENTZ INC.
P.O. BOX 901
WINCHESTER, ORE. 97495

REGISTERED
PROFESSIONAL
LAND SURVEYOR

OREGON
JULY 12, 1988
DONALD A. BENTZ
839

COUNTY SURVEYORS FILE DATA
DO NOT REMOVE FROM OFFICE