

COUNTY SURVEYORS FILE DATA
DO NOT REMOVE FROM OFFICE

MINOR LAND PARTITION
IN SE 8 SW 1/4, SEC. 13, 8 NW 8 NE 1/4, SEC. 24
T.26S., R.4W., W.M.
MAY, 1988 SCALE 1"=100'

FILED
MAY 31 1988
COUNTY SURVEYOR
DOUGLAS COUNTY, ORE.

FOR: A.J. & MAYMIE UPDEGRAVE
15417 N. BANK RD.
ROSEBURG, OR 97470

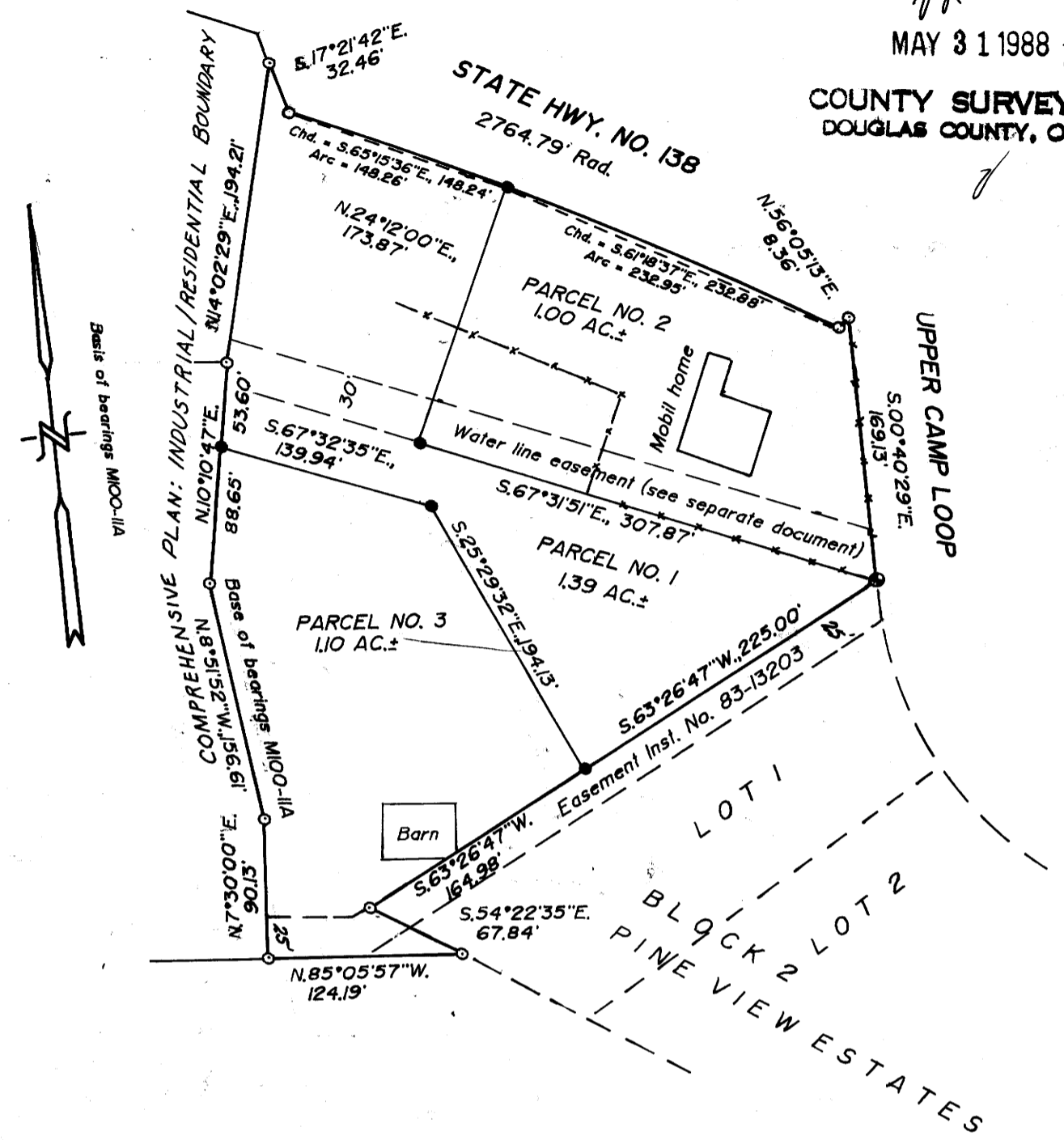
BY: BAUGHMAN TECHNICAL SERVICE INC.
433 S.E. MAIN STREET
ROSEBURG, OR 97470
PHONE 673-0966

PARCEL NO. 1
Beginning at a 2" I.P. at the Initial Point of "PINE VIEW ESTATES" a subdivision in sections 13 and 24, T.26S., R.4W., W.M.: thence S.63°26'47"W. 225.00 ft. to a 5/8" I.R.: thence N.25°29'32"W., 194.13 ft. to a 5/8" I.R.: thence N.67°32'35"W., 139.94 ft. to a 5/8" I.R.: thence N.10°10'47"E. 53.60 ft. to a 5/8" I.R.: thence N.14°02'29"E., 194.21 ft. to a 5/8" I.R. on the Southerly R/w line of State Hwy. No. 138: thence along said R/w S.17°21'42"E. 32.46 ft. to a 5/8" I.R.: thence continuing along said R/w along the arc of a 2764.79 ft. radius curve right (the long chord of which bears S.65°15'36"E., 148.24 ft.) to a 5/8" I.R.: thence S.24°12'00"W. 173.87 ft. to a 5/8" I.R.: thence S.67°31'51"E., 307.87 ft. to the point of beginning.
The above described parcel situated in sections 13 and 24, T.26S., R.4 W., W.M. and contains 1.39 acres more or less.

PARCEL NO. 2
Beginning at a 2" I.P. at the Initial Point of "PINE VIEW ESTATES" a subdivision in sections 13 and 24, T.26S., R.4W., W.M.: thence N.67°31'51"W., 307.87 ft. to a 5/8" I.R.: thence N.24°12'00"E., 173.87 ft. to a 5/8" I.R. on the Southerly R/w line of State Hwy. No. 138: thence along said R/w line on a arc of a 2764.79 ft. radius curve right (the long chord of which bears S.61° 18'37"E., 232.88 ft.) to a 5/8" I.R.: thence continuing along said R/w N.56° 05'13"E. 84.36 ft. to a 5/8" I.R. on the Westerly R/w line of Upper Camp Loop: thence S.0°40'29" E. , 169.13 ft. to the point of beginning.
The above described parcel situated in section 13, T.26S., R.4W., W.M. and contains 1.00 acres more or less.

PARCEL NO. 3
Beginning at a 5/8" I.R. from which the Initial Point of "PINE VIEW ESTATES" a subdivision in sections 13 and 24, T.26S., R.4W., W.M. bears N. 63°26'47"E. 225.00 ft.: thence S.63°26'47"W. 164.98 ft. to a 5/8" I.R.: thence S.54°22'35"E., 67.84 ft. to a 5/8" I.R.: thence N.85°05'57"W. 124.19 ft. to a 5/8" I.R.: thence N.7°30'00"E., 90.13 ft. to a 5/8" I.R.: thence N.8°51'52"W., 156.61 ft. to a 5/8" I.R.: thence N.10°10'47"E., 88.65 ft. to a 5/8" I.R.: thence S.67°32'35"E., 139.94 ft. to a 5/8" I.R.: thence S.25° 29'32"E., 194.13 ft. to the point of beginning.
The above described parcel situated in sections 13 and 24, T.26S., R. 4W., W.M. and contains 1.10 acres more or less.

NARRATIVE
This survey was performed to divide the 3.49 acre parcel depicted on M100-11A into three parcels. The survey was based on M100-11A and no other survey or evidence was considered. The survey was performed by L. Fanning and D. Baughman, using a Lietz TM20C theodolite and 300 ft. chain. The office work and drafting was performed by G. Baughman.



LEGEND

- = Set 5/8" X 30" I.R. W/pl. Cap "BAUGHMAN TECH SERV"
- = Fd. 5/8" I.R.
- = Fd. 2" I.P. (Initial point "PINE VIEW ESTATES")

ZONE: RR-1

UTILITIES:

- WATER- GLIDE WATER ASSN.
- SEWER- GLIDE-IDL YLD SANITARY DISTRICT

88-07609

STATE OF OREGON)
COUNTY OF DOUGLAS) SS.
I, GAY FIELDS, COUNTY CLERK AND RECORDER
OF CONVEYANCES, DO HEREBY CERTIFY THAT
THIS INSTRUMENT WAS RECORDED

1988 JUN -1 AM 9:12
GAY FIELDS
DOUGLAS COUNTY CLERK
IN THE OFFICIAL RECORDS OF DOUGLAS COUNTY
BY *[Signature]*
DEPUTY
FEE *[Signature]*

APPROVALS:
Keith L. Cubie 5/17/88
PLANNING DIRECTOR DATE
Francis L. Ingram 5-31-88
COUNTY SURVEYOR DATE

REGISTERED
PROFESSIONAL
LAND SURVEYOR

Glenn S. Baughman

OREGON
JULY 14, 1961
GLENN S. BAUGHMAN
536

MAP FILE M100-11A - 19

MAP FILE M100-11A - 19