

# PROPERTY SURVEY FOR MILBURN JOHNSON

LOT 2, B1.1, SOUTH-VIEW SUBDIVISION, SW 1/4, S.2, T28S, R6W, W.M.  
By AA SURVEYING SERVICE, Inc. MAY 1988

FILED  
MAY 27 1988  
COUNTY SURVEYOR  
DOUGLAS COUNTY, ORE.

NARRATIVE

**PURPOSE:**  
To replace the missing property corners of Lot 2, Block 1 Southview Subdivision for Milburn Johnson.

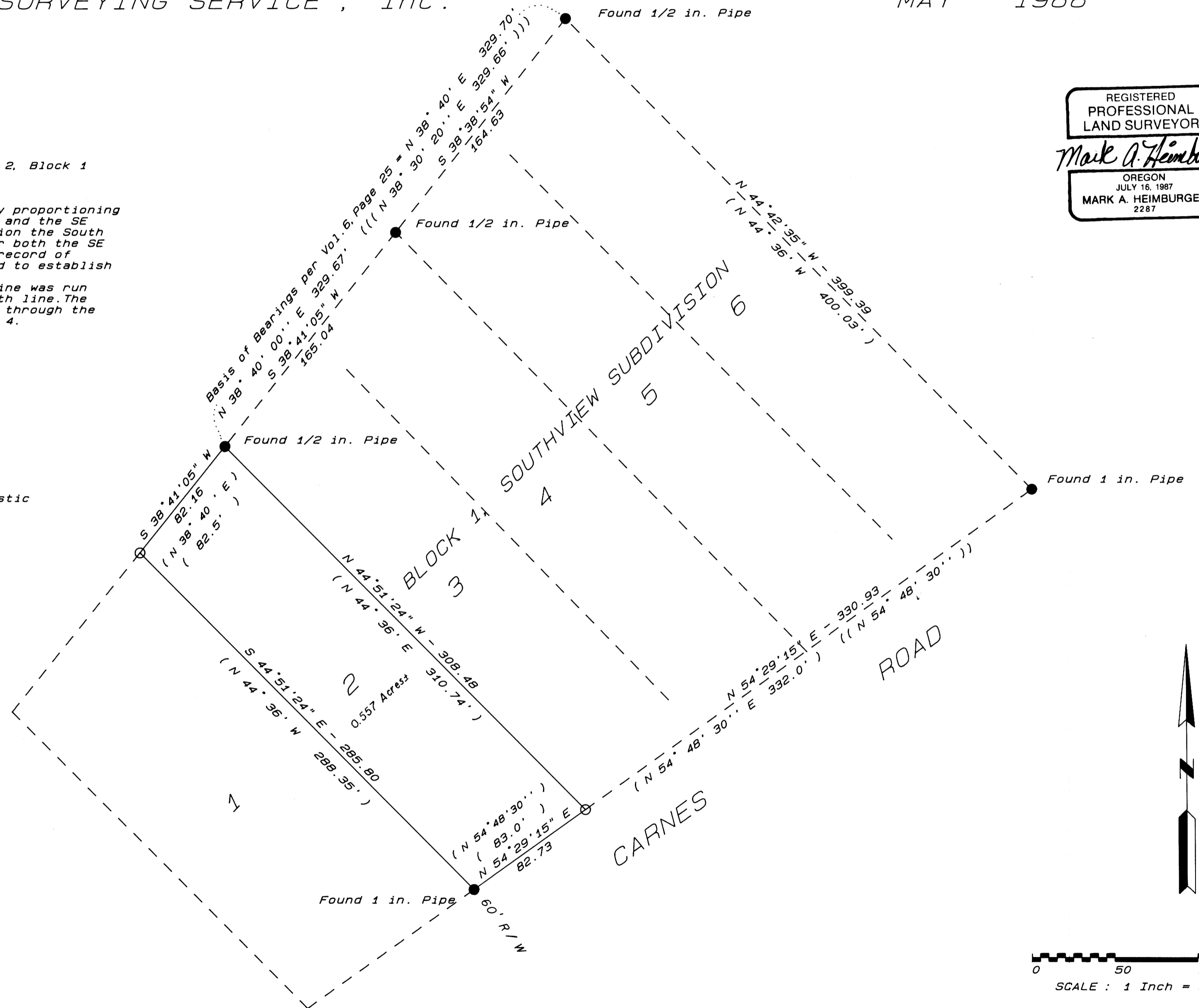
**PROCEDURE:**  
The SE Corner of Lot 2 was established first by proportioning between 2 found corners. The SW Corner of Lot 2 and the SE Corner of Lot 6 were found and used to proportion the South boundary of Lot 2. A 1/4 inch rod was found near both the SE Corner of Lot 2 and the SE Corner of Lot 4. No record of these corners were found and they were not used to establish the South boundary.  
To establish the NW Corner of Lot 2, the West line was run parallel to the East line to intersect the North line. The North line was established by extending a line through the found monuments at the NE Corners of Lot 2 and 4.

LEGEND

- Found corner as noted.
- Set 5/8 in. x 30 in. Iron Rod and plastic Cap marked "AA SURVEYING"
- ( ) Record per Volume 6, Page 25, "South - View" Subdivision.
- (( )) Record per Volume 5, Page 34, "Pacific Highway Fruit Lands"
- (( ( )) Record per RM 3 - 19.

MAP PREPARED BY:

AA SURVEYING SERVICE, Inc.  
2566 NE Stephens Street  
Roseburg, Oregon 97470  
503 - 672 - 2096



REGISTERED  
PROFESSIONAL  
LAND SURVEYOR  
*Mark A. Heimbarger*  
OREGON  
JULY 16, 1987  
MARK A. HEIMBURGER  
2287



0 50 100 150  
SCALE: 1 Inch = 50 Feet

MAP FILE M106-117

MAP FILE M106-117