

MINOR LAND PARTITION IN THE NORTH 1/2  
OF SECTION 11, T.28S., R.6. W. W. M.

OWNER/PARTITIONER:  
UMPQUA DEVELOPMENT CORPORATION  
410 SPRUCE ST.  
ROSEBURG, OREGON

SURVEYED BY:  
BRUCE ROGERS  
200 N.E. PATTERSON ST.  
ROSEBURG, OREGON

ZONING: M2  
SEWER: GREEN SANITARY  
WATER: ROBERTS CREEK WAT. DIST.

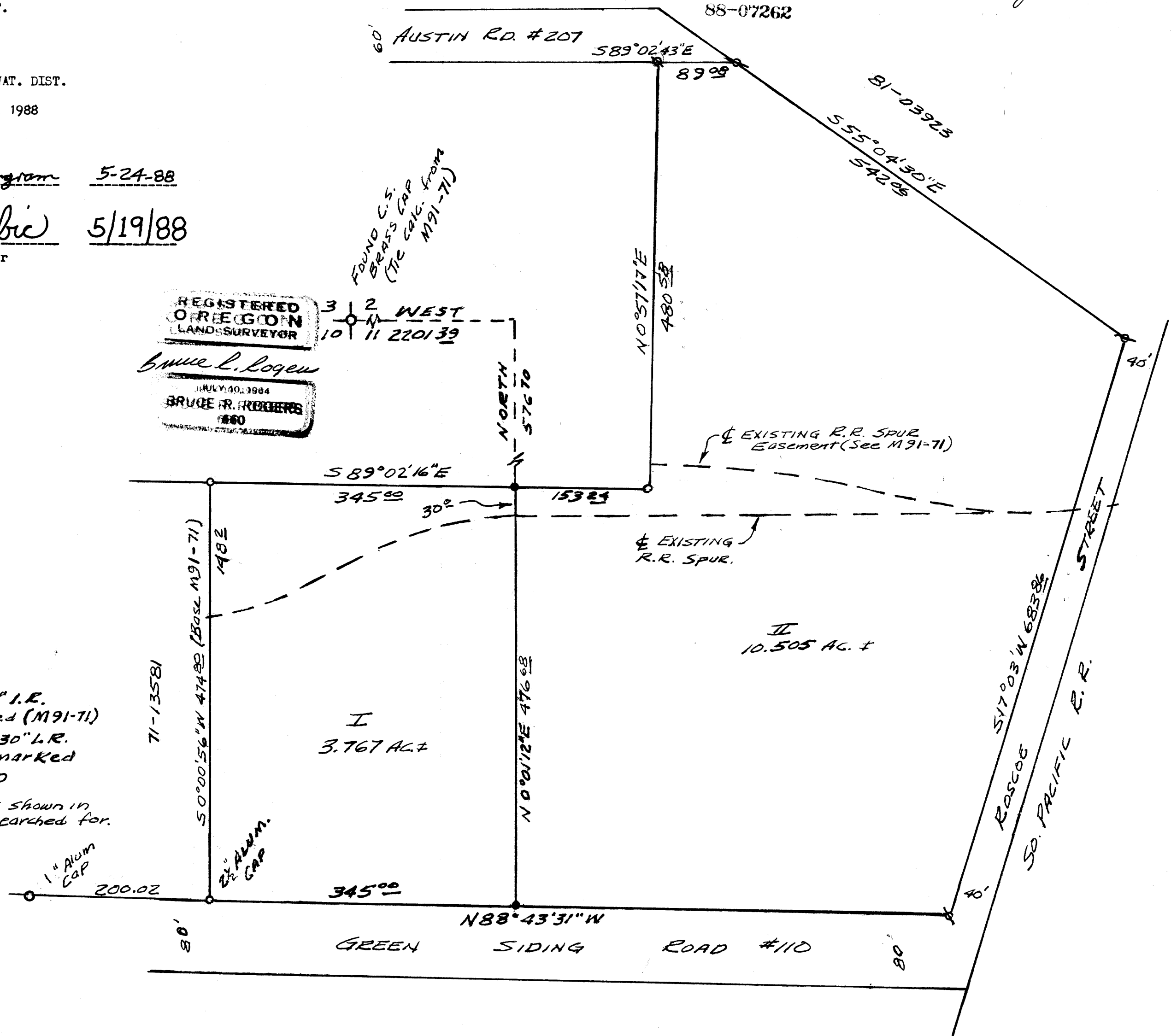
1"=100' MAY, 1988

APPROVALS:  
Francis L. Ingram 5-24-88  
County Surveyor  
Keith L. Cubic 5/19/88  
County Planning Director

FILED  
MAY 24 1988  
COUNTY SURVEYOR  
DOUGLAS COUNTY, ORE.

MAP FILE M.106-13A

- - Found 5/8" I.R. or 95 noted (M91-71)
- - SET 5/8x30" L.R. with cap marked L.S. 660
- ⊕ - Monuments shown in M91-71 Not searched for.



MAP FILE M.106-13A