

COUNTY SURVEYORS FILE DATA
DO NOT REMOVE FROM OFFICE

PROPERTY SURVEY

LOTS 5 & 6, BLOCK 26, KINNEY'S IMPROVED PLAT
IN THE SW 1/4 OF SEC. 18, T27S, R5W, W.M.
FOR MARTIN DUNN
BY A.A. SURVEYING SERVICE, INC.
SCALE : 1" = 50' MARCH 1988

FILE *ff*
APR 26 1988 TF
COUNTY SURVEYORS
ROSEBURG, OREGON, 97130 TF

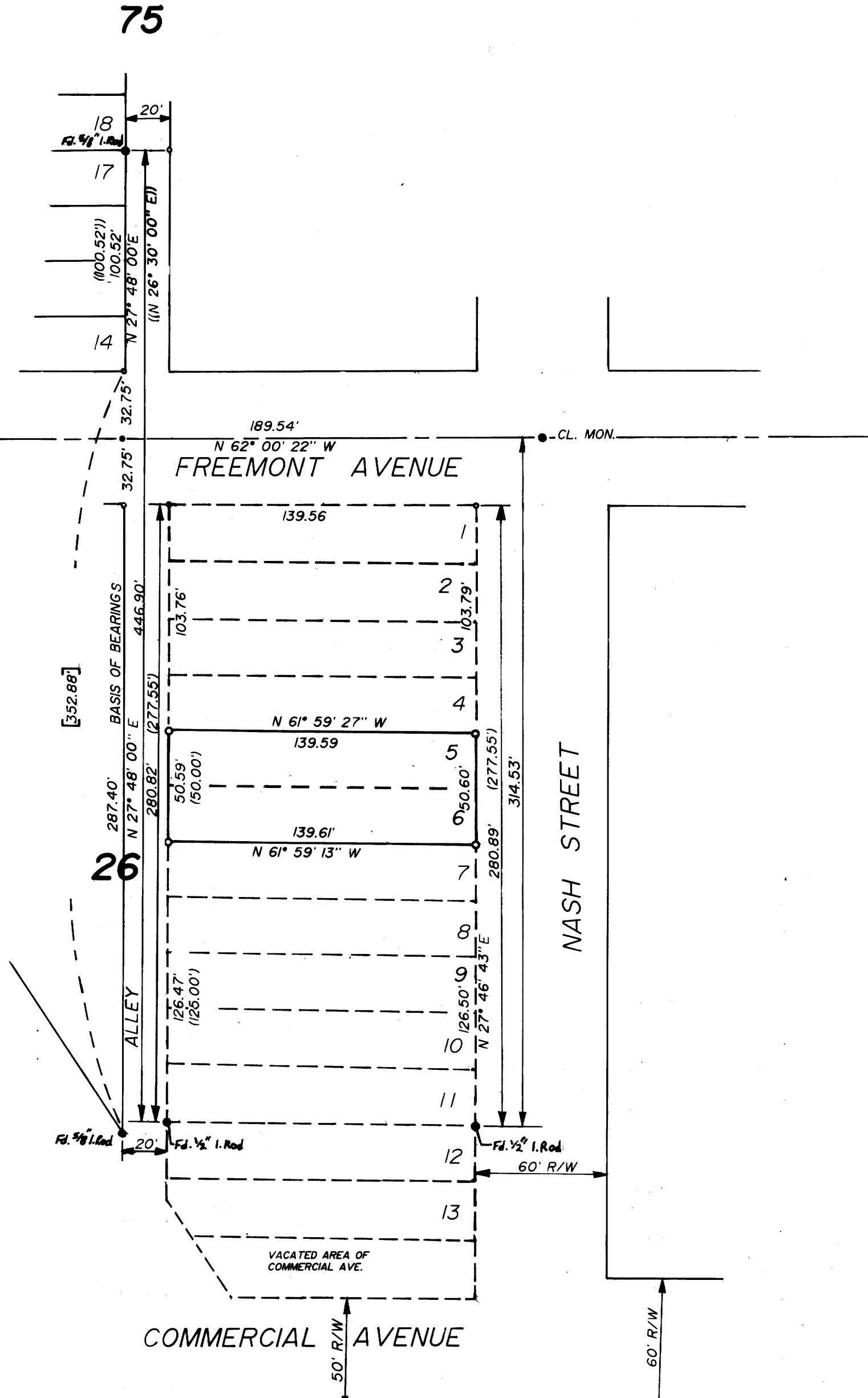
NARRATION

Purpose: To monument the South line of lot 6 and the North line of lot 5, Block 26, Kinney's Improved Plat.

Procedure: The East line of Block 26 was established by using the found centerline monument at the intersection of Freemont Avenue and Nash Street and the found 1/2" iron pipe as shown on Record Survey CS 41/210. The East line of lots 5 and 6 were then established at proportionate distances along the West right-of-way line of Nash Street. The corners on the West line of lot 5 and 6 were established by proportioning. This was accomplished by establishing the West line of the 20 foot alley using the found 5/8" iron rod at the Southeast corner of lot 14, Block 26 per CS 58/124 and the 5/8" iron rod at the Northeast corner of lot 17, Block 75 per M 52-34. The South right-of-way line of Freemont Avenue was established from the Northeast corner of lot 17, Block 75 using record distance per CS 58/9 and from the centerline monument mentioned before.

The East line of the alley was then established using a calculated Northwest corner of lot 1, Block 26 and the found 1/2" iron pipe per CS 41/210 at the Northwest corner of lot 12. This line was then proportioned to establish the Southwest corner of lot 6 and the Northwest corner of lot 5.

It appears that the North line of lot 12 was proportioned incorrectly as shown on CS 41/210. It shows proportioning between the two centerline monuments on Nash Street. In reviewing the Record Survey, it appears that 60 foot right-of-way was used to establish the South right-of-way line of Freemont Avenue. This disagrees with the Record Plat of Subdivision A, Kinney's Improved Plat which shows a 65.5 foot right-of-way. It was also decided, that since these monuments had been used for 35 years that they would be held as corners.



LEGEND

- Fd. as noted
- Set 5/8" X 30" I.R. w/Plastic Cap marked A.A. Surveying Inc.
- Calculated point
- () Record per Plat
- (()) Record per CS 58/9
- [] Record per CS 58/124

REGISTERED
PROFESSIONAL
LAND SURVEYOR

Ronald A. Quimby
OREGON
JULY 11, 1978
RONALD A. QUIMBY
1954

PREPARED BY:
A.A. Surveying Service, Inc.
2566 N.E. Stephens St.
Roseburg, Oregon 97470
Ph: (503) 672-2096