

1/4 CORNER 22 & 23
 FOUND: 2-1/2" IRON PIPE WITH S.L.M. BRASS CAP DATED 1973
 8" FIR, 379-1/2E, 38.2' - CLOSED FACE
 24" FIR, S84W, 29.8' - OPENED TO VISIBLE SCRIBING
 35" FIR STUMP, 369-1/2W, 26.0' - DOUGLAS CO. TAG
 NOTE: "W" NAIL IN ROOT BEARS S82°28'03"W, 21.87'

1/4 CORNER 23 & 24
 FOUND: 2-1/2" IRON PIPE WITH S.L.M. BRASS CAP DATED 1973
 13" FIR, S47-3/4E, 23.5' - CLOSED FACE
 27" FIR, S82-1/2W, 26.6' - CLOSED FACE
 11" FIR, N33W, 43.5' - CLOSED FACE

SOUTH 1/16 CORNER 23 & 24
 FOUND: 2-1/2" IRON PIPE WITH S.L.M. BRASS CAP DATED 1973
 15" FIR, N89-1/4E, 32.2' - CLOSED FACE
 11" FIR, N82W, 66.9' - CLOSED FACE

CENTER-EAST 1/16 CORNER
 SET: 2" X 42" IRON PIPE WITH BRASS CAP
 24" FIR, S31-1/2E, 40.4' - SCRIBED "CE1/16 S23 BT"
 21" FIR, S56W, 31.9' - SCRIBED "CE 1/16 S23 BT"

SOUTHEAST 1/16 CORNER
 SET: 2" X 42" IRON PIPE WITH BRASS CAP
 11" FIR, N35E, 36.5' - SCRIBED "SE 1/16 S23 BT"
 14" FIR, S18E, 19.0' - SCRIBED "SE 1/16 S23 BT"

PROPERTY CORNER ON WEST SECTION LINE
 SET: 2" X 42" IRON PIPE WITH BRASS CAP
 19" DOUBLE FIR, N48E, 21.9' - SCRIBED "PC BT"
 11" FIR, N43W, 26.2' - SCRIBED "PC BT"

PROPERTY CORNER ON N-S CENTERLINE
 SET: 2" X 42" IRON PIPE WITH BRASS CAP
 22" I. CEDAR, S38W, 45.9' - SCRIBED "PC BT"
 13" ALDER, N68W, 45.8' - BARK SCRIBED "PC BT"

PROPERTY CORNER
 SET: 2" X 42" IRON PIPE WITH BRASS CAP
 14" FIR, N79E, 66.6' - SCRIBED "PC BT"
 18" FIR, N33W, 26.6' - SCRIBED "PC BT"

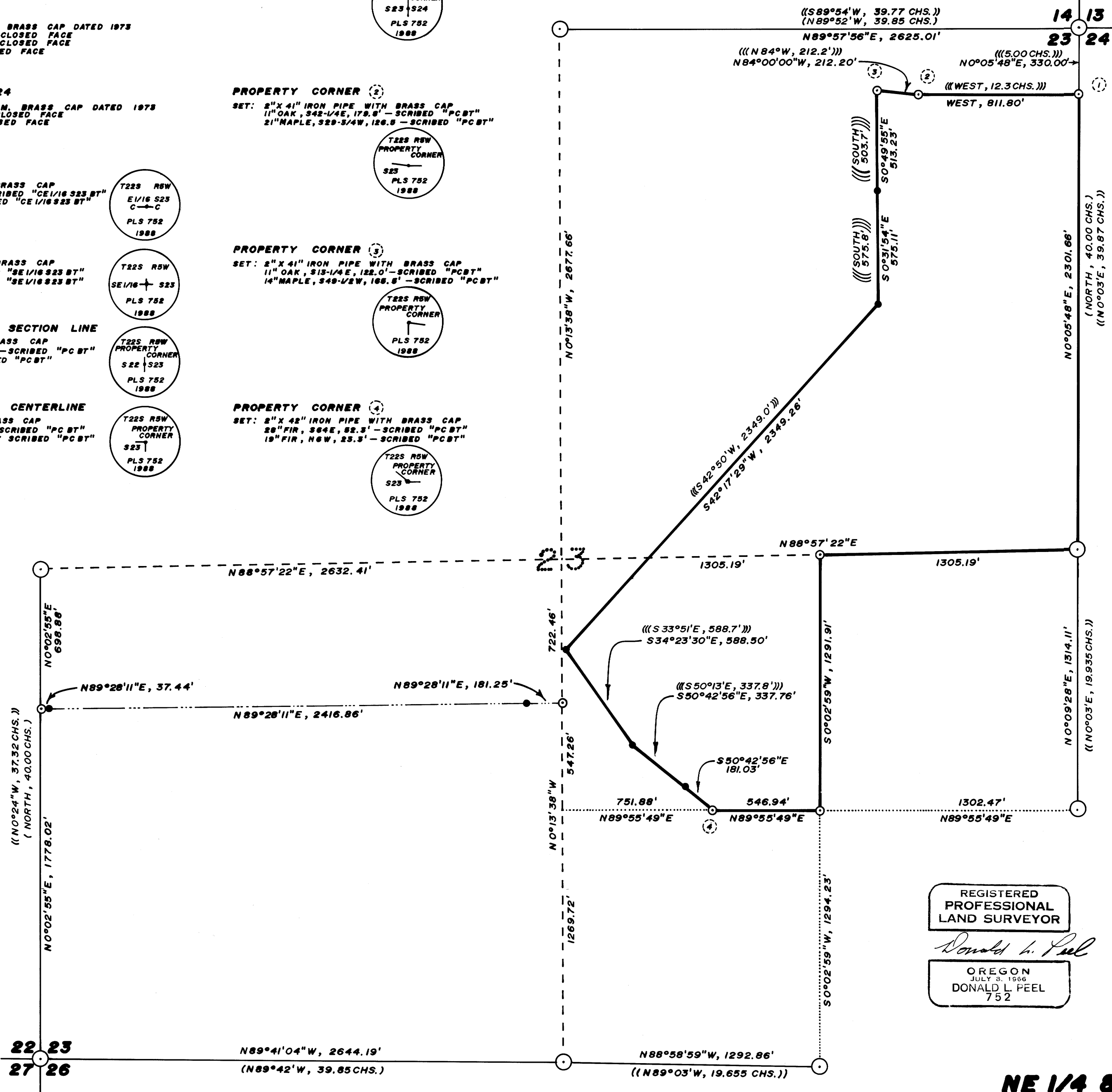
PROPERTY CORNER
 SET: 2" X 41" IRON PIPE WITH BRASS CAP
 11" OAK, S42-1/4E, 179.8' - SCRIBED "PC BT"
 21" MAPLE, S29-3/4W, 126.8' - SCRIBED "PC BT"

PROPERTY CORNER
 SET: 2" X 41" IRON PIPE WITH BRASS CAP
 11" OAK, S13-1/4E, 122.0' - SCRIBED "PC BT"
 14" MAPLE, S49-1/2W, 166.8' - SCRIBED "PC BT"

PROPERTY CORNER
 SET: 2" X 42" IRON PIPE WITH BRASS CAP
 28" FIR, S84E, 52.3' - SCRIBED "PC BT"
 19" FIR, N6W, 23.3' - SCRIBED "PC BT"

1/4 CORNER 14 & 23
 FOUND: 2-1/2" IRON PIPE WITH S.L.M. BRASS CAP DATED 1973
 CORNER FALLS ON OPEN HILLSIDE - NO BEARING TREES

SECTION CORNER 13, 14, 23, 24
 FOUND: 2-1/2" IRON PIPE WITH S.L.M. BRASS CAP DATED 1973
 14" FIR, N61-1/2E, 30.3' - CLOSED FACE
 17" FIR, S44E, 17.3' - CLOSED FACE
 19" FIR, S28-1/2W, 33.0' - CLOSED FACE
 18" FIR, N32-1/2W, 18.0' - CLOSED FACE



- NARRATIVE -
 THIS SURVEY WAS MADE IN JANUARY AND FEBRUARY, 1988 BY DONALD L. PEEL OF PEEL BAKER LAND SURVEYING INC., 1262 LAWRENCE ST. - SUITE 4, EUGENE, OREGON. THE PURPOSE OF THIS SURVEY WAS TO LOCATE AND MARK SOME OF THE PROPERTY LINES OF THE PROPERTY OWNED BY WEYERHAEUSER COMPANY IN SECTION 23, T22S, R5W, W.M. A WILD T1000 THEOMAT AND D155 E.D.M. WERE USED TO PERFORM THIS SURVEY. CLOSED RANDOM TRAVERSES WERE RUN BETWEEN FOUND CORNERS (GOVT. CORNERS AND PROPERTY CORNERS) FOR CONTROL. BEARINGS WERE BASED ON A SOLAR OBSERVATION (AS PER MY EARLIER SURVEY IN SEC. 13, C.S. NO. M105-27). CLOSED RANDOM TRAVERSES WERE RUN AS CLOSE AS POSSIBLE TO THE PROPERTY LINE TO BE MARKED. OFFSETS FROM THE RANDOM TRAVERSE LINE TO THE TRUE PROPERTY LINE WERE CALCULATED AND USED TO DETERMINE THE POSITION OF THE TRUE PROPERTY LINE. THE TRUE PROPERTY LINE WAS MARKED IN THE FIELD BY BLAZING TREES (BLAZES NOTCHED AND PAINTED RED) ON BOTH SIDES OF THE TRUE LINE. THE POSITION FOR THE CENTER 1/4 CORNER WAS DETERMINED (BUT NOT SET) AT THE POINT OF INTERSECTION OF THE NORTH-SOUTH AND EAST-WEST CENTERLINES. THE CENTER-EAST 1/16 CORNER WAS SET AT MIDPOINT BETWEEN THE EAST 1/4 CORNER AND THE CENTER 1/4 CORNER. THE POSITION FOR THE CENTER-SOUTH 1/16 CORNER WAS DETERMINED (BUT NOT SET) AT MIDPOINT BETWEEN THE SOUTH 1/4 CORNER AND THE CENTER 1/4 CORNER. THE SOUTHEAST 1/16 CORNER WAS SET AT THE POINT OF INTERSECTION OF THE NORTH-SOUTH AND EAST-WEST CENTERLINES OF THE SOUTHEAST QUARTER. ALL BUT ONE OF THE CORNERS CALLED FOR IN THE DEED AS BEING "A 3/4 INCH MONEL PIPE" WERE FOUND. THE REMAINING CORNERS SET IN THIS SURVEY WERE SET ACCORDING TO DEED CALLS. ALL CORNERS SET IN THIS SURVEY WERE MONUMENTED AS SHOWN ON THIS PLAT. UNLESS OTHERWISE NOTED, FOR ALL BEARING TREES MARKED IN THIS SURVEY THE BEARINGS ARE MAGNETIC, VARIATION 20° AND THE DISTANCE WAS MEASURED TO A "W" NAIL IN THE LOWER BLAZE.

BASIS OF BEARING: SOLAR OBSERVATION (SEE NARRATIVE)

SCALE: 1" = 400'

- CORNERS FOUND
- CORNERS SET THIS SURVEY
- FOUND 3/4" MONEL PIPE (AS PER DEED)
- PROPERTY LINE BLAZED
- - - PROPERTY LINE NOT BLAZED
- () RECORD DATA G.L.O. 1855
- (()) RECORD DATA B.L.M. 1973
- ((()) RECORD DATA DEED VOL. 272 PG. 425

REGISTERED
 PROFESSIONAL
 LAND SURVEYOR

Donald L. Peel
 OREGON
 JULY 8, 1966
 DONALD L. PEEL
 752

**SURVEY IN
 NE 1/4 & SOUTH 1/2 SEC. 23, T22S, R5W, W.M.
 DOUGLAS COUNTY, OREGON**

FOR
WEYERHAEUSER COMPANY
 BY
PEEL BAKER LAND SURVEYING INC.
 FEBRUARY 23, 1988

COUNTY SURVEYORS FILE DATA
 DO NOT REMOVE FROM OFFICE

M105-69
 63/71

M105-69

FILED *[Signature]*

MAR 23 1988

OREGON CORNER RESTORATION FORM

S.W. CORNER DLCC# 43

Section _____ Township 225 Range 5W

COUNTY SURVEYOR
DOUGLAS COUNTY, ORE.

County DOUGLAS Date FEB 16, 1988

Corner Designation

- Condition Report Only
- Not Found
- Renewed
- Unrecorded
- Surveyed In
- Referenced Out

Previous Renewals/Surveys, etc.

REN # 120 & REN # 149

Monument(s) & Accessories Found: (Condition and Source)

FOUND DOUGLAS CO. BRASS CAP DATED 1975 ON
1 1/4" IRON PIPE IN MOUND OF LARGE STONES -

42" FIR, N52 1/2 E, 544.6 FT.

(CLOSED FACE)
CENTER MEASURE

STEEL FENCE POST 0.9 FT. EASTERLY.

Monument Detail

Sketch

Monument Set (Procedures and Description)

New Accessories

Location & Comments

Surveyor's Seal

CORNER FALLS

Compass Declination _____

APPROX 4' EASTERLY
OF AN OLD FENCE

Firm/Agency PEEL BAKER LAND
SURVEYING INC.

RUNNING APPROX
N31E

Address 1262 LAWRENCE ST.
EUGENE, OR. 97401

Party Chief D.L. PEEL

Notes _____

Witness H. KREIDLER

REGISTERED
PROFESSIONAL
LAND SURVEYOR

Donald L. Peel

OREGON
JULY 3, 1968
DONALD L. PEEL
752

C.S. File No. 63/7/A ✓

M105-69

FILED

JS

OREGON CORNER RESTORATION FORM

INTERIOR & D.L.C. #33

Section _____ Township 234 Range 5W

MAR 23 1988

County DOUGLAS Date FEB 16, 1968

COUNTY SURVEYOR
DOUGLAS COUNTY, ORE.

Corner Designation _____

- Condition Report Only
- Not Found
- Renewed
- Unrecorded
- Surveyed In
- Referenced Out

Previous Renewals/Surveys, etc. _____

REN. # 119 AND REN. # 151

Monument(s) & Accessories Found: (Condition and Source)

FOUND: DOUGLAS CO. BRASS CAP DATED 1975 IN
RING OF STONES, SET FLUSH WITH SURFACE
OF PASTURE. — 24" MAPLE, N 78 1/2 E, 90.5 FT.
(CLOSED FACE - CENTER MEASURE)
12" OAK (PART OF 3 OAK CLUSTER), N 38 E, 120.6 FT.
(CLOSED FACE - CENTER MEASURE)

Monument Detail

Sketch

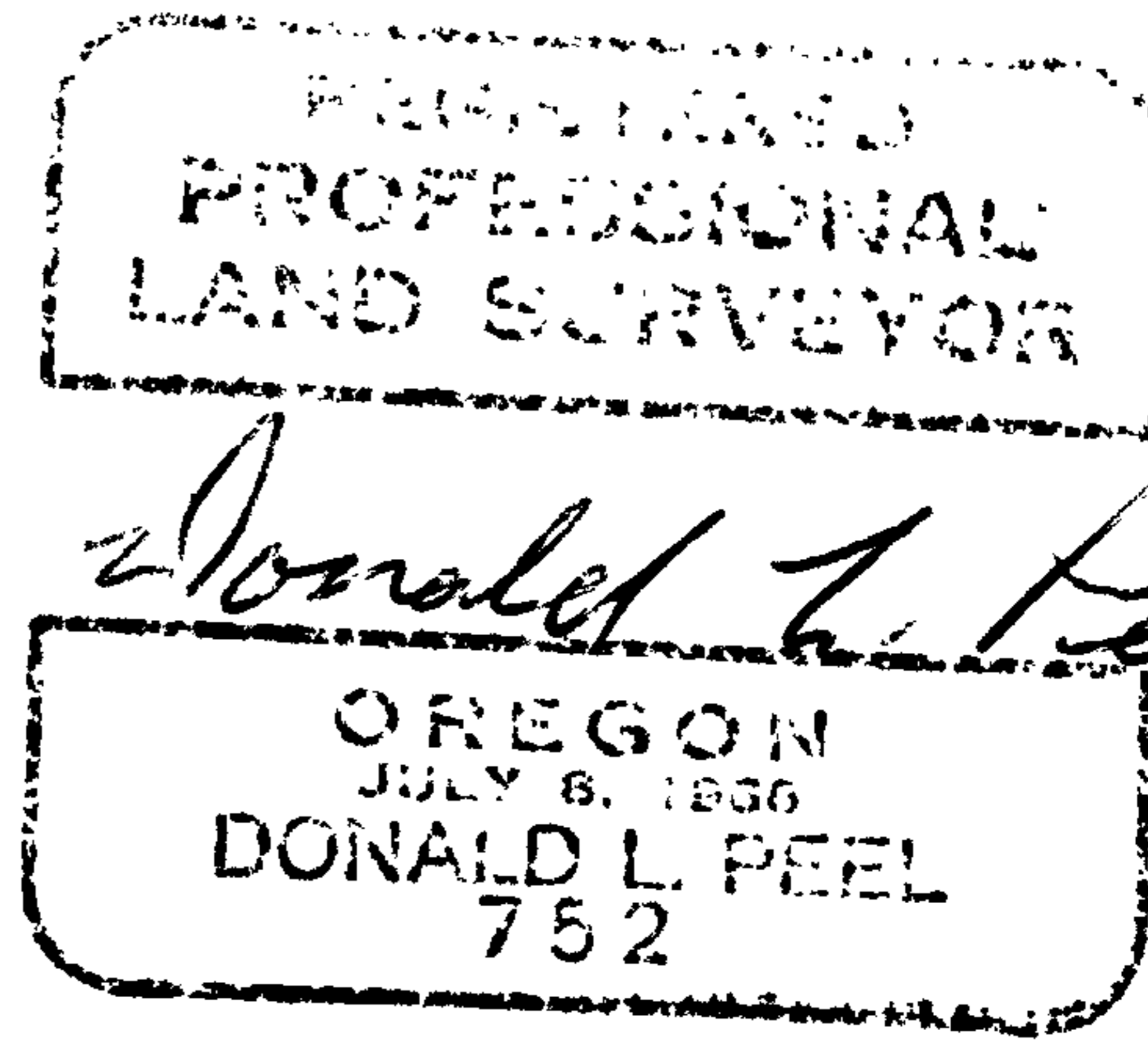
Monument Set (Procedures and Description)

New Accessories

Location & Comments

CORNER FALLS IN Compass Declination _____
PASTURE NEAR Firm/Agency PEEL BAKER
THE BASE OF A LAND SURVEYING INC.
HILL Address 1262 LAWRENCE ST.
EUGENE OREGON 97401
 Party Chief _____
 Notes _____
 Witness H. KREIDLER

Surveyor's Seal



U.S. File No. 63/71B