

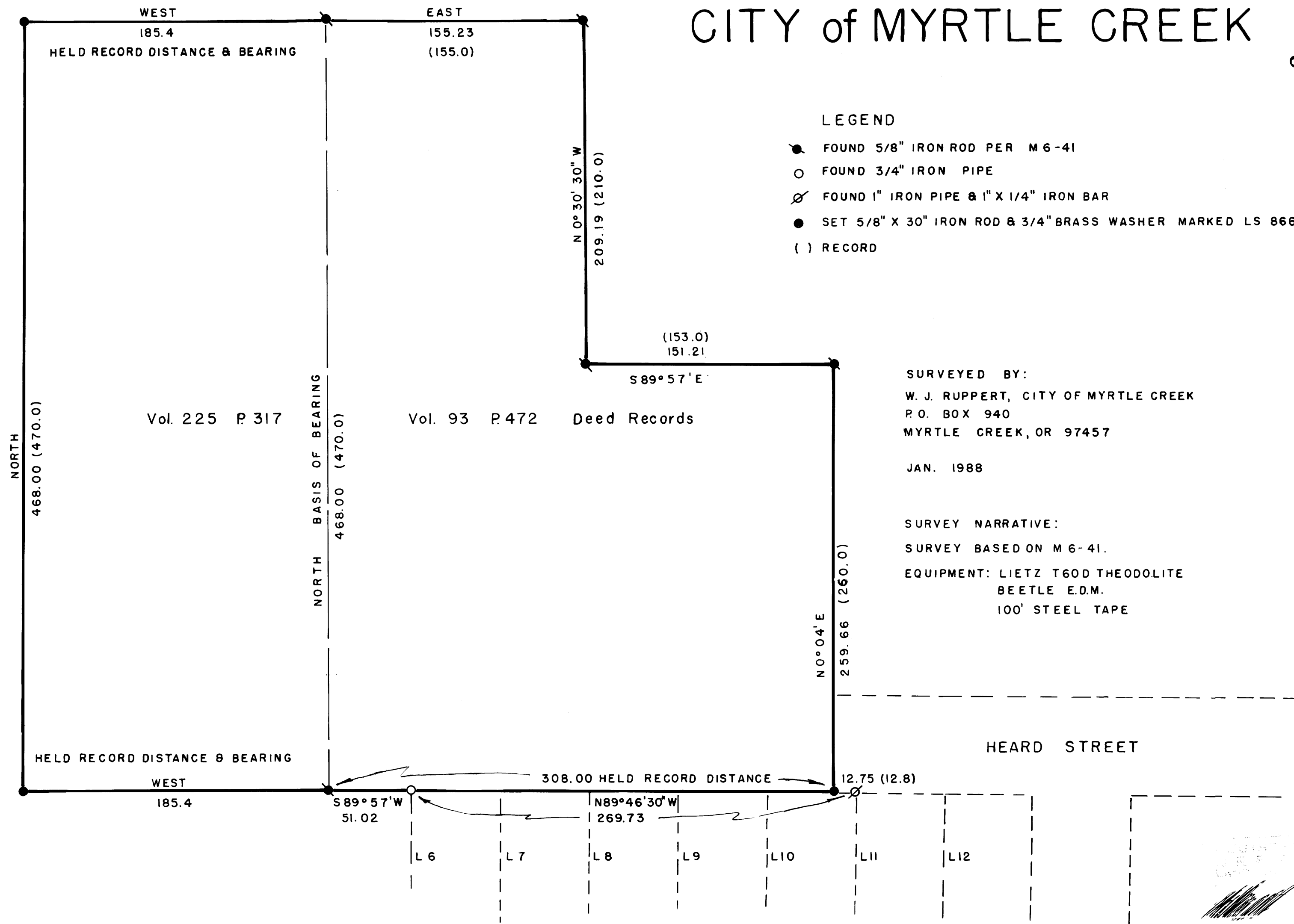
COUNTY SURVEYORS FILE DATA
DO NOT REMOVE FROM OFFICE

SURVEY IN S.E. 1/4 S. 21, T. 29S. R. 5 W. W.M

FOR
CITY of MYRTLE CREEK

FILED
FEB 29 1988
COUNTY SURVEYOR
DOUGLAS COUNTY, ORE

M105-59



YONKER'S ADDITION

M105-59