

SURVEY IN
SECTION 27, T.22S. R.12W. W.M.
FOR
MENASHA CORPORATION

COUNTY SURVEYORS FILE DATA
DO NOT REMOVE FROM OFFICE

FILED *TK*
FEB 5 1988
COUNTY SURVEYOR
DOUGLAS COUNTY, ORE.

DATE: 1/26/88
SURVEY BY
MARK HOYE LS2098
MENASHA CORPORATION
P.O. BOX 588
NORTH BEND OR. 97459



BASIS OF BEARING IS A SURVEY BY DAVID
KLAUSMAN IN 7/26/85. THE COMMON LINE
BEING BETWEEN THE S 1/4 AND C 1/4.
SCALE: 1"=400'

LEGEND

- ⊙ CORNERS FOUND
- CORNERS SET
- LINES TRAVERSED
- /// LINES BLAZED & PAINTED
- LINES PROJECTED

NARRATIVE

THIS SURVEY WAS CONDUCTED TO LOCATE AND MARK THE
PROPERTY BOUNDARIES OF MENASHA CORPORATION IN THE
SOUTHEAST QUADRANT OF SECTION 27, T.22S., R.12W. W.M.
ALL CORNERS SET, WERE ESTABLISHED IN ACCORDANCE
WITH THE BUREAU OF LAND MANAGEMENT'S MANUAL OF
SURVEYING INSTRUCTIONS 1973.
THIS SURVEY WAS COMPLETED WITH AN ERROR OF CLOSURE
OF 1 IN 5855. INSTRUMENTS USED WERE A PENTAX 10-D
FOR TRAVERSE WORK AND A HANDCOMPASS AND STEEL
TAPE TO ESTABLISH BEARING TREES.

FD 1 1/2" I.P. WITH BRASS CAP
18" SPRUCE, N63°W, 5.5', SCRIBED & TAGGED
12" HEMLOCK, S52°E, 20.3', SCRIBED & TAGGED
MEASUREMENTS TO SPIKE IN BASE

FD 1 1/2" I.P. WITH BRASS CAP
8" HEMLOCK, S31°W, 16.4', SCRIBED & TAGGED
42" HEMLOCK, N48°W, 11.6', SCRIBED & TAGGED
MEASUREMENTS TO SPIKE IN BASE

FD 1 1/2" I.P. WITH OSBF BRASS CAP
10" MYRTLE, N11°E, 14.5', SCRIBED & TAGGED
32" RED CEDAR, S62°E, 39.6', SCRIBED & TAGGED
32" MYRTLE, S70°W, 51.9', SCRIBED & TAGGED

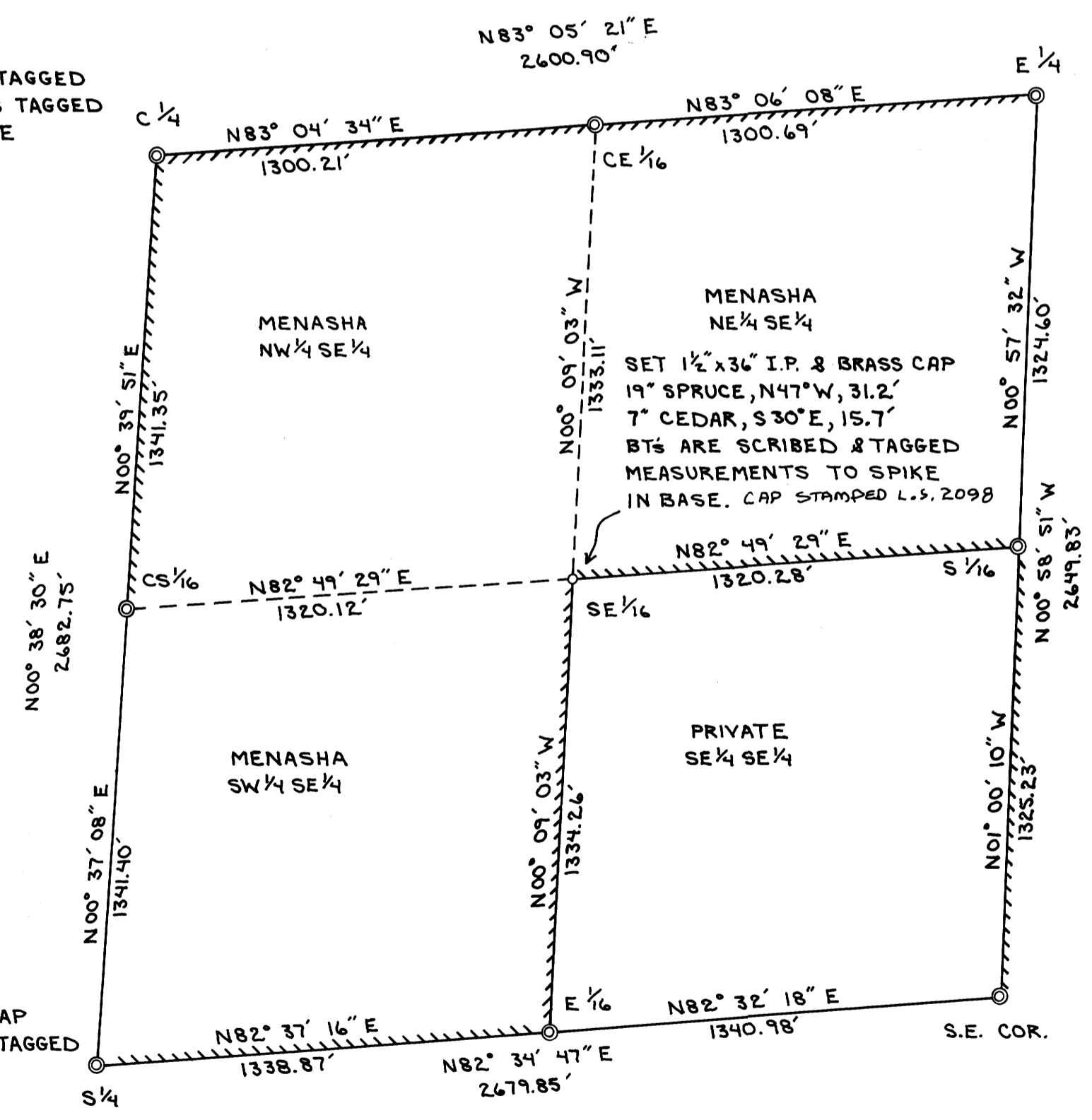
FD 1 1/2" I.P. WITH BRASS CAP
14" MAPLE, S77°E, 13.8', X & TAGGED
12" CHITTUM, N11°W, 13.4', X & TAGGED
MEASUREMENTS TO SPIKE IN BASE

FD 1 1/2" I.P. WITH OSBF BRASS CAP
27" D-FIR, S15°W, 12.5', SCRIBED & TAGGED
24" D-FIR, S34°E, 36.7', SCRIBED & TAGGED

FD 1 1/2" I.P. WITH OSBF BRASS CAP
40" SPRUCE, N73°W, 3.8', SCRIBED & TAGGED
20" D-FIR, S28°E, 19.2', SCRIBED

FD 1 1/2" I.P. WITH OSBF BRASS CAP
29" D-FIR, S15°W, 9.0', SCRIBED & TAGGED
26" D-FIR, N9°E, 24.7', SCRIBED & TAGGED
22" D-FIR, NORTH, 29.4', SCRIBED
16" D-FIR, EAST, 60.9', SCRIBED
16" MYRTLE CLUMP, S82°E, 41.3'

FD 1 1/2" I.P. WITH OSBF BRASS CAP
36" RED CEDAR, S62°W, 44.4', SCRIBED & TAGGED
22" D-FIR, N48°E, 35.3', SCRIBED



REGISTERED
PROFESSIONAL
LAND SURVEYOR

Mark Hoyer

OREGON
JULY 13, 1964
MARK A. HOYE
2098

MAP FILE M105-49

MAP FILE M105-49