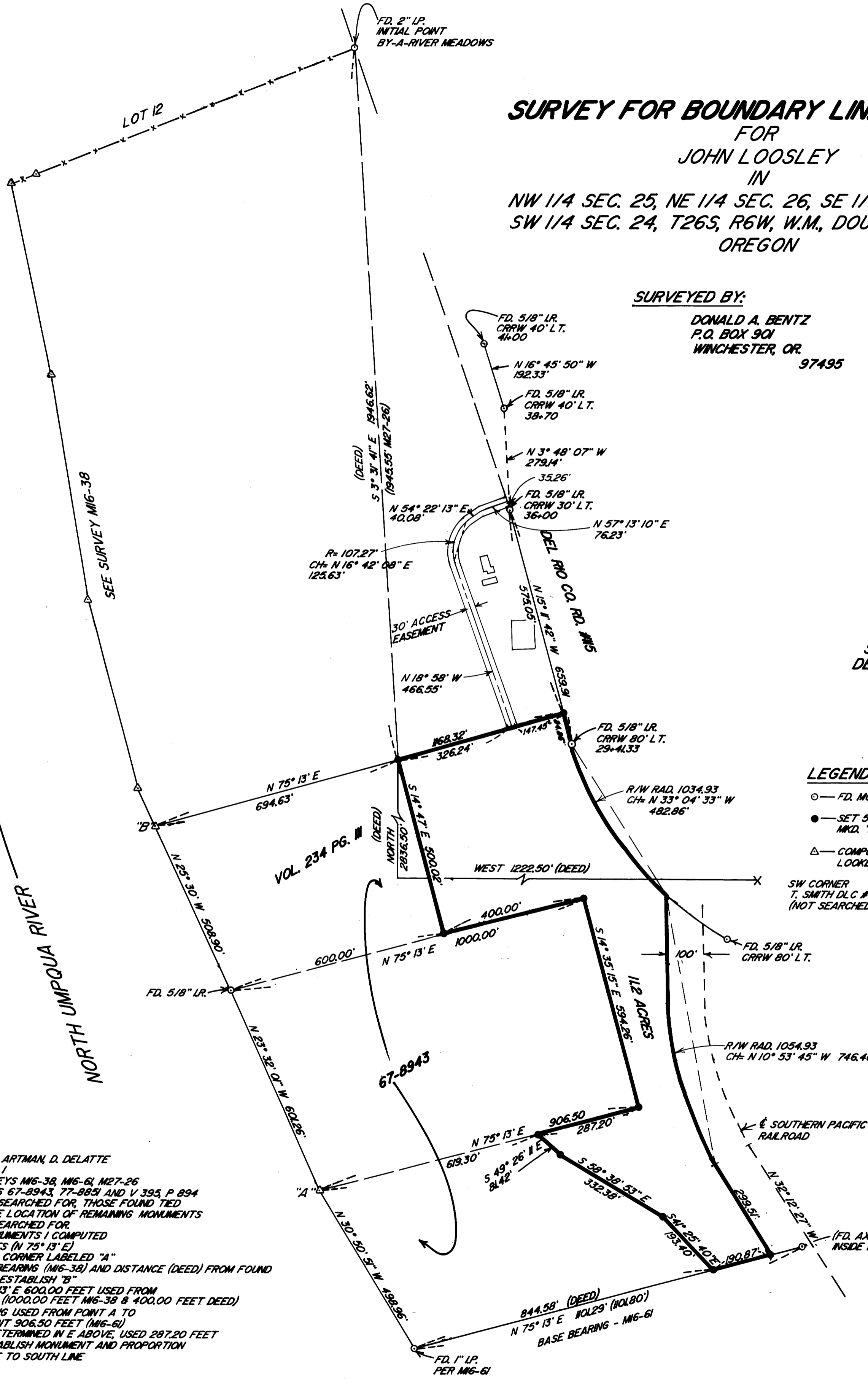


COUNTY SURVEYORS FILE DATA
DO NOT REMOVE FROM OFFICE

FILED *ff*
FEB 1988 *ff*
COUNTY SURVEYOR
DOUGLAS COUNTY, ORE.
ff

SURVEY FOR BOUNDARY LINE ADJUSTMENT
FOR
JOHN LOOSLEY
IN
NW 1/4 SEC. 25, NE 1/4 SEC. 26, SE 1/4 SEC. 23,
SW 1/4 SEC. 24, T26S, R6W, W.M., DOUGLAS COUNTY,
OREGON

SURVEYED BY:
DONALD A. BENTZ
P.O. BOX 901
WINCHESTER, OR. 97495



SCALE: 1"=200'
DECEMBER, 1987

LEGEND:
○ — FD. MON. AS NOTED
● — SET 5/8"x30" LR. W/PLASTIC CAP MKD. "BENTZ SURV. INC."
△ — COMPUTED POINT AND MONUMENT LOOKED FOR NOT FOUND
X — SW CORNER T. SMITH DLC #44 (NOT SEARCHED FOR)

NARRATIVE:

FIELD WORK BY J. ARTMAN, D. DELATTE
WILD T-1 AND RED 1
REFERENCE SURVEYS M16-38, M16-61, M27-26
DEED REFERENCES 67-8943, 77-8851 AND V. 395, P. 894
ALL MONUMENTS SEARCHED FOR, THOSE FOUND TIED
AND APPROXIMATE LOCATION OF REMAINING MONUMENTS
COMPUTED AND SEARCHED FOR.
USING FOUND MONUMENTS I COMPUTED
A) PARALLEL LINES (N 75° 13' E)
B) PROPORTIONED CORNER LABELED "A"
C) USED RECORD BEARING (M16-38) AND DISTANCE (DEED) FROM FOUND
MONUMENT TO ESTABLISH "B"
D) RECORD N 75° 13' E 600.00 FEET USED FROM
FOUND 5/8" LR. (1000.00 FEET M16-38 & 400.00 FEET DEED)
E) N 75° 13' E BEING USED FROM POINT A TO
ESTABLISH POINT 906.50 FEET (M16-61)
F) FROM POINT DETERMINED IN E ABOVE, USED 287.20 FEET
(DEED) TO ESTABLISH MONUMENT AND PROPORTION
FROM THIS LINE TO SOUTH LINE

REGISTERED
PROFESSIONAL
LAND SURVEYOR

Donald A. Bentz
OREGON
JULY 12, 1988
DONALD A. BENTZ
839

V184-519