

COUNTY SURVEYORS FILE DATA  
DO NOT REMOVE FROM OFFICE

RE SURVEY OF LOTS 1-2-3 BLOCK 1 FENDER HOME SITES  
IN SE 1/4 SEC. 12. T27S..R.6W. W.M. DOUGLAS CO.. OREGON  
FOR EDUCATION SERVICE DISTRICT  
1871 N.E. STEPHENS  
ROSEBURG. ORE

Ph 440-4794

SEP 1987

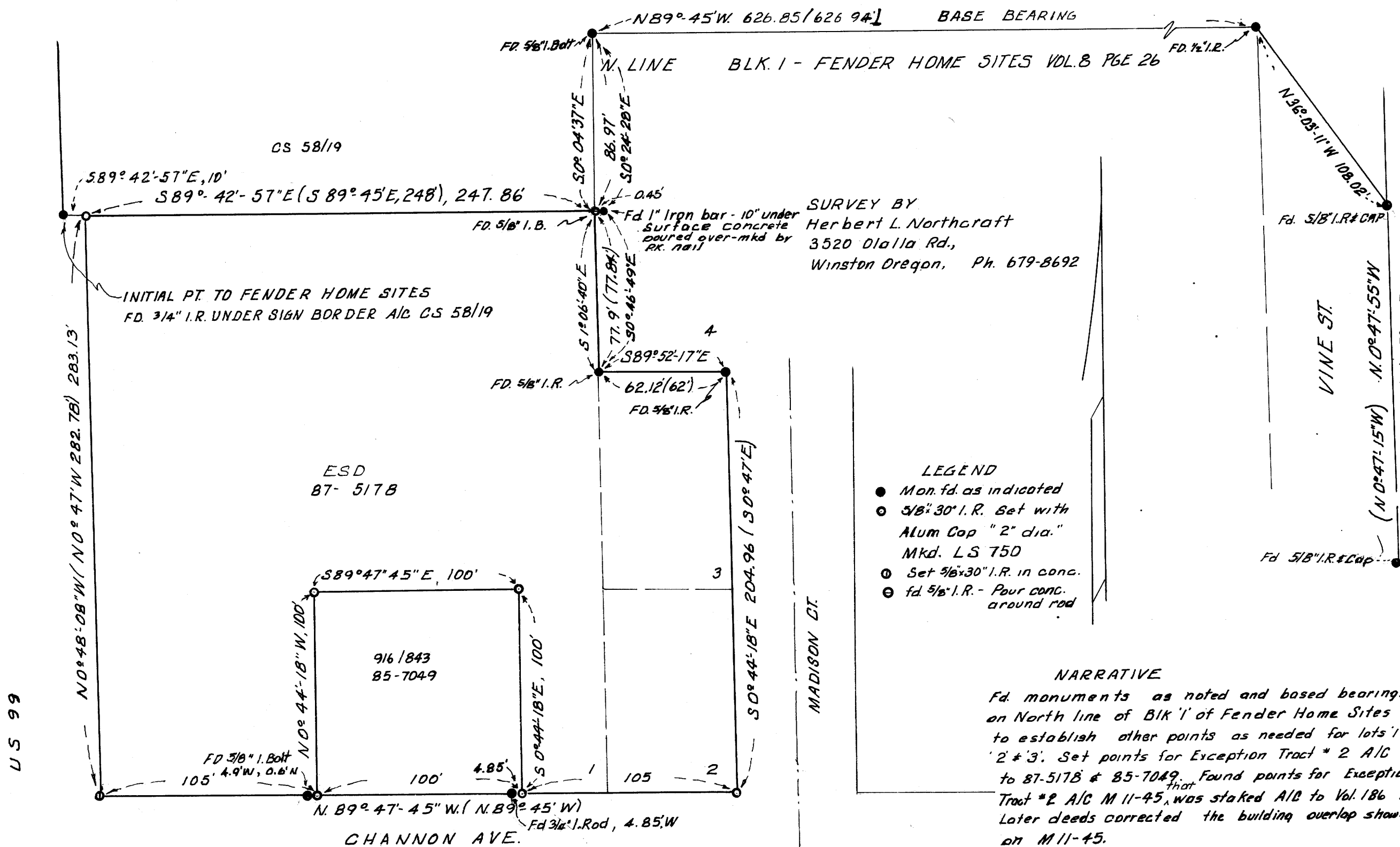
SCALE 1" = 50'

FILED

JAN 27 1988

COUNTY SURVEYOR  
DOUGLAS COUNTY, ORE

MAP FILE M105-44



**LEGEND**

- Mon. fd. as indicated
- 5/8" 30" I.R. Set with Alum Cap "2" dia. Mkd. L S 750
- Set 5/8" 30" I.R. in conc.
- fd 5/8" I.R. - Pour conc. around rod

**NARRATIVE**

Fd monuments as noted and based bearings on North line of Blk '1' of Fender Home Sites to establish other points as needed for lots '1' 2 & 3. Set points for Exception Tract \* 2 A/C to 87-5178 & 85-7049. Found points for Exception Tract \* 2 A/C M 11-45, was staked A/B to Vol. 186 Pg. 308. Later deeds corrected the building overlap shown on M 11-45.

H.L. Northcraft T, Tyler Northcraft ch, Jena 010 & Mock II

After survey was finished we were pouring concrete around 5/8" I. Rod at s.w. corner of Lot 1 & at N.E. corner, 10" under the surface we found a 1" iron bar 0.45' East of 5/8" I. Rod. Concrete covers 1" I. Bar but marked by P.K. nail. East line of Lot 2 & 3 established by record distance & rec. dist. from 3/4" I.R. on Shannon Ave. being used as control. Recorded distance along Channon Ave. let us establish the S.W. Cor. of lot 1. This established W. line of lot 1. All bearings are carried from Base bearing NB9° 45' W. the N. line of Blk 1.

REGISTERED PROFESSIONAL LAND SURVEYOR  
Herbert L. Northcraft  
CREATED BY HERBERT L. NORTHCRAFT 700

U.S. 99

MADISON CT.

VINE ST.

(N. 0° 47' 15" W) N. 0° 47' 55" W

M 104-59 A & B

MAP FILE M105-44