

M105-40

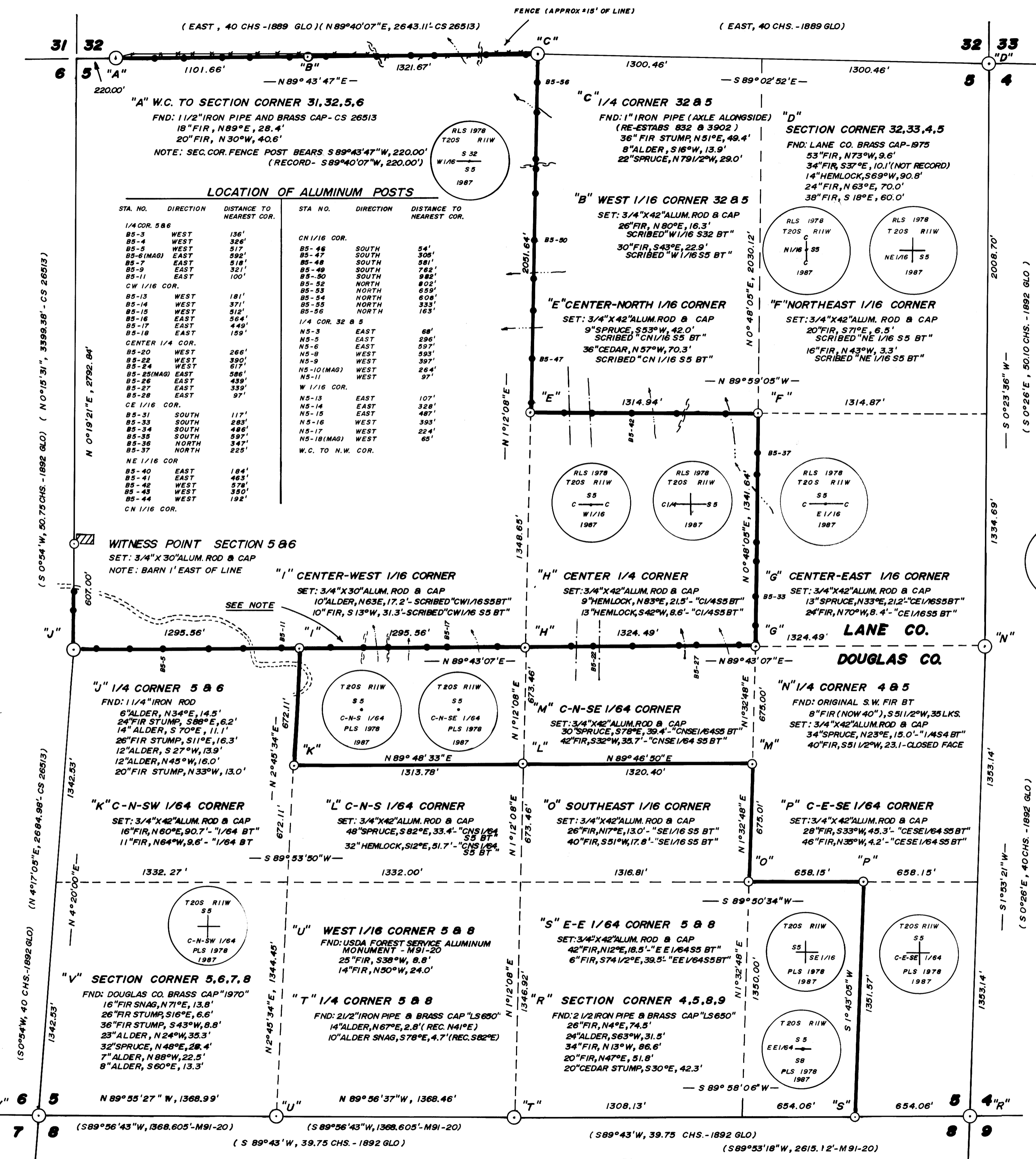
NARRATIVE

THIS SURVEY WAS MADE FROM JUNE THROUGH DECEMBER, 1987 BY DANIEL W. BAKER OF PEEL BAKER LAND SURVEYING, INC., 1262 LAWRENCE ST., SUITE 4, EUGENE, OREGON, 97401. THE PURPOSE OF THIS SURVEY WAS TO LOCATE AND MARK IN THE FIELD THE BOUNDARY LINES OF INTERNATIONAL PAPER COMPANY AND DAVIDSON INDUSTRIES, INC. IN SECTION 5, T20S, R11W, W.M. A KERN K1M THEODOLITE AND DM 502 E.D.M. WAS USED TO PERFORM THIS SURVEY. RANDOM TRANSIT TRAVERSES, WITH A MINIMUM ERROR OF CLOSURE OF 1/5,000, WERE RUN BETWEEN FOUND CORNERS FOR CONTROL AND CLOSED TRANSIT TRAVERSES WERE ALSO RUN AS CLOSE AS POSSIBLE TO THE TRUE LINE AND OFFSETS FROM THE RANDOM TRAVERSE LINE TO THE TRUE BOUNDARY LINE WERE CALCULATED AND USED TO DETERMINE THE TRUE BOUNDARY LINES. BEARINGS WERE BASED ON A SOLAR OBSERVATION FROM C.S. 25295 - LANE CO. OR M89-66 - DOUGLAS CO. THE NORTH, SOUTH, AND WEST 1/4 CORNERS AND NORTHEAST, SOUTHEAST, AND SOUTHWEST SECTION CORNERS WERE ALL MONUMENTED AS SHOWN ON THIS MAP AND WERE SET FROM ORIGINAL EVIDENCE. THE WITNESS CORNER TO THE NORTHWEST SECTION CORNER WAS SET IN C.S. 26513 - LANE CO. OR M90-50 - DOUGLAS CO. THE EAST 1/4 CORNER WAS RE-ESTABLISHED FROM THE ORIGINAL SOUTHWEST FIR BEARING TREE AND WAS MONUMENTED WITH A 3/4" ALUMINUM ROD AND CAP. THE CENTER 1/4 CORNER WAS SET AT THE INTERSECTION OF THE NORTH-SOUTH AND EAST-WEST CENTERLINES OF SECTION 5. THE CENTER-NORTH 1/16 CORNER WAS SET AT PROPORTIONATE DISTANCE BETWEEN THE CENTER 1/4 AND NORTH 1/4 CORNERS AS PER THE 1892 G.L.O. PLAT. ALL OTHER 1/16 AND 1/64 CORNERS WERE SET OR DETERMINED FOR SUBDIVISION PURPOSES, IN ACCORDANCE TO THE "1973- BLM MANUAL OF INSTRUCTIONS". ALL BOUNDARY LINES COMMON TO INTERNATIONAL PAPER CO. AND DAVIDSON IND. WERE MARKED BY BLAZING TREES (BLAZES PAINTED RED) AND SETTING 6 FOOT ALUMINUM POSTS WITH "I.P. TIMBERLANDS - PROPERTY LINE" DECALS, STAMPED WITH DISTANCE AND DIRECTION TO THE NEAREST CORNER (POSTS SET ± 1 FOOT OF TRUE LINE). A WHITE MAGNETIC LOCATOR WAS BURIED ALONGSIDE POST AND EACH POST WAS REFERENCED WITH A BEARING AND DISTANCE TIE FROM A BOUNDARY TAG IN A NEARBY TREE TO THE POST. ALL OTHER BOUNDARY LINES WERE MARKED BY BLAZING TREES AND SETTING STEEL POSTS AT RANDOM INTERVALS APPROXIMATELY (± 1 FOOT) ON TRUE LINE. ALL CORNERS SET IN THIS SURVEY WERE MONUMENTED WITH A 3/4" ALUMINUM ROD AND CAP. ALL DISTANCES TO BEARING TREES ARE TO A 7" SPIKE IN SIDE AND CENTER OF TREE AND BEARINGS ARE MAGNETIC, VAR. 20°.

BASIS OF FIR BEARING: SOLAR OBSERVATION FROM CS 25295 LANE CO. OR M89-66 DOUGLAS CO.
 SCALE: 1" = 400'

- CORNER FOUND
- CORNERS SET (3/4" ALUMINUM ROD AND CAP)
- BLAZED BOUNDARY LINE
- 6 FOOT ALUMINUM POSTS
- () RECORD DATA
- COUNTY RD. NO. 49 (DOUGLAS CO.)
- POWERLINE (BPA)
- CREEK
- RIDGE

**SURVEY IN
 LANE AND DOUGLAS CO., ORE.
 SECTION 5, T20S, R11W, W.M.**
 FOR
**INTERNATIONAL PAPER COMPANY
 AND
 DAVIDSON INDUSTRIES, INC.**
 BY
PEEL BAKER LAND SURVEYING, INC.
 DECEMBER 23, 1987



LOCATION OF ALUMINUM POSTS

STA. NO.	DIRECTION	DISTANCE TO NEAREST COR.	STA. NO.	DIRECTION	DISTANCE TO NEAREST COR.
1/4 COR. 5 & 6					
B5-3	WEST	136'	CN 1/16 COR.		
B5-4	WEST	326'	B5-46	SOUTH	54'
B5-5	WEST	517'	B5-47	SOUTH	501'
B5-6(MAG)	EAST	592'	B5-48	SOUTH	581'
B5-7	EAST	518'	B5-49	SOUTH	782'
B5-8	EAST	321'	B5-50	SOUTH	922'
B5-11	EAST	100'	B5-51	SOUTH	802'
CW 1/16 COR.					
B5-13	WEST	181'	B5-52	NORTH	659'
B5-14	WEST	371'	B5-53	NORTH	608'
B5-15	WEST	512'	B5-54	NORTH	608'
B5-16	EAST	564'	B5-55	NORTH	333'
B5-17	EAST	449'	B5-56	NORTH	163'
B5-18	EAST	159'			
CENTER 1/4 COR.					
B5-20	WEST	266'	N5-3	EAST	68'
B5-22	WEST	390'	N5-5	EAST	296'
B5-24	WEST	617'	N5-6	EAST	597'
B5-25(MAG)	EAST	586'	N5-8	WEST	533'
B5-26	EAST	439'	N5-9	WEST	397'
B5-27	EAST	339'	N5-10(MAG)	WEST	264'
B5-28	EAST	97'	N5-11	WEST	97'
CE 1/16 COR.					
B5-31	SOUTH	117'	N5-13	EAST	107'
B5-33	SOUTH	283'	N5-14	EAST	328'
B5-34	SOUTH	446'	N5-15	EAST	487'
B5-35	SOUTH	597'	N5-16	WEST	393'
B5-36	NORTH	347'	N5-17	WEST	224'
B5-37	NORTH	225'	N5-18(MAG)	WEST	65'
NE 1/16 COR.					
B5-40	EAST	184'			
B5-41	EAST	463'			
B5-42	WEST	578'			
B5-43	WEST	350'			
B5-44	WEST	192'			
CN 1/16 COR.					

WITNESS POINT SECTION 5 & 6

SET: 3/4" X 30" ALUM. ROD & CAP
 NOTE: BARN 1' EAST OF LINE

NOTE
 DOMESTIC WATER SYSTEM AND WATER LINE BETWEEN CW 1/16 COR. AND C 1/4 COR. (± 30' OF TRUE LINE)

REGISTERED PROFESSIONAL LAND SURVEYOR
 DANIEL W. BAKER
 JULY 15, 1982
 OREGON
 1978

COUNTY SURVEYORS FILE DATA
 DO NOT REMOVE FROM OFFICE

M105-40