

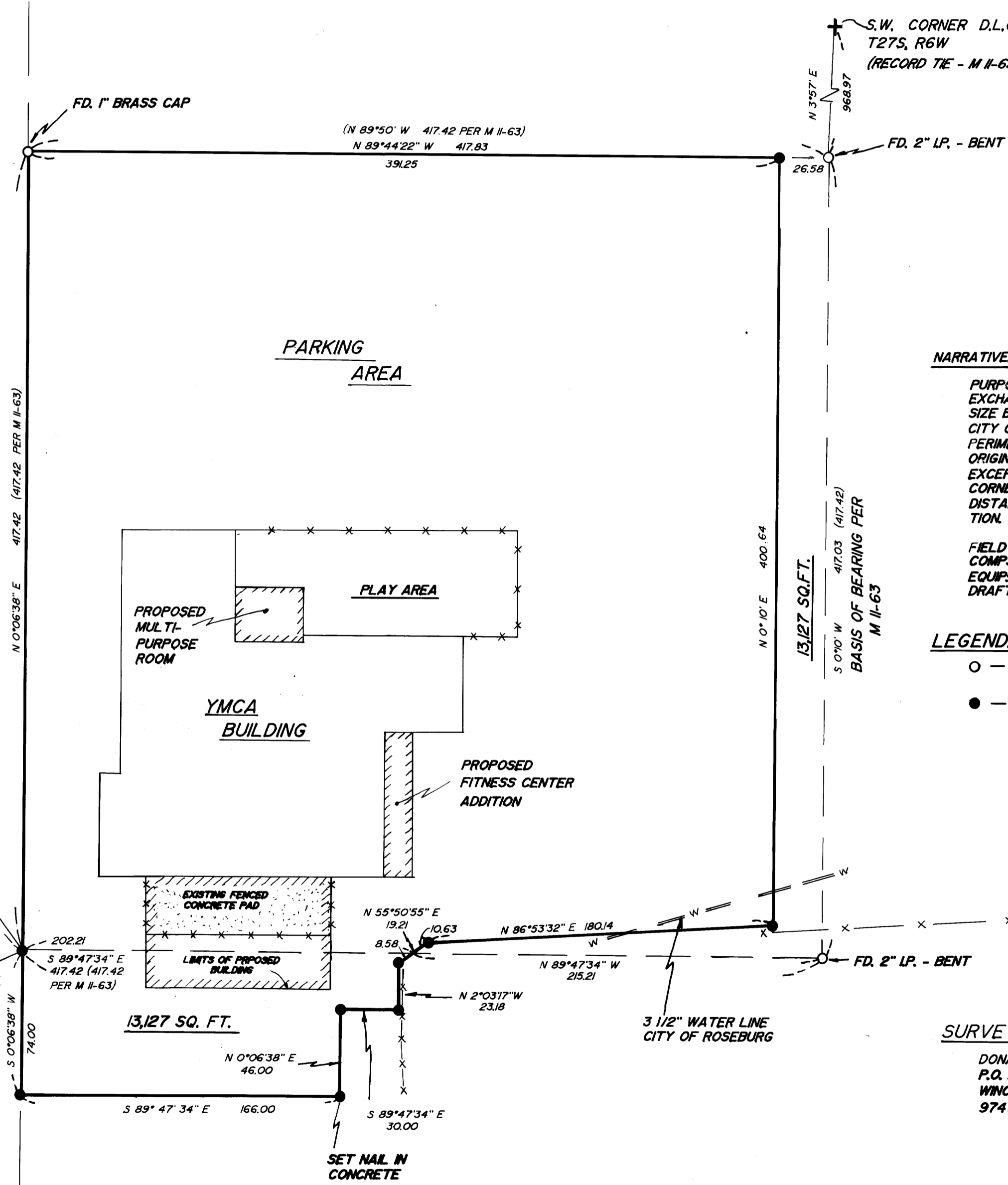
COUNTY SURVEYORS FILE DATA
DO NOT REMOVE FROM OFFICE

SURVEY FOR THE Y.M.C.A. & CITY OF ROSEBURG FILED *TR*
IN THE SE 1/4 OF SECTION 14, T27S, R6W, W.M., DOUGLAS COUNTY, ORE.

JAN 12 1988 ✓

COUNTY SURVEYOR
DOUGLAS COUNTY, ORE.

M 105-38



NARRATIVE:

PURPOSE OF THIS SURVEY IS TO EXCHANGE PARCELS OF EQUAL SIZE BETWEEN THE YMCA & THE CITY OF ROSEBURG. PERIMETER MONUMENTS OF THE ORIGINAL PARCEL WERE FOUND EXCEPT THE SW CORNER. THIS CORNER WAS POSITIONED USING DISTANCE - DISTANCE INTERSECTION.

FIELD CREW: BOB COOK, JIM ARTMAN
COMPS: GREG LANG
EQUIP: WILD T1 & RED I EDM
DRAFTING: GREG LANG

LEGEND:

- — FOUND MONUMENT AS NOTED
- — SET 5/8" x 30" LR. / PLASTIC CAP MARKED "BENTZ SURV. INC." UNLESS OTHERWISE NOTED

REGISTERED
PROFESSIONAL
LAND SURVEYOR
Donald A. Bentz
OREGON
JULY 12, 1982
DONALD A. BENTZ
839

SURVEYED BY:

DONALD A. BENTZ, INC.
P.O. BOX 901
WINCHESTER, ORE.
97470 (503) 673-0166

LOT 1
BLOCK 1
CEDAR VALE
LOT 2

10' ALLEY DEEDED TO PUBLIC BY CITY OF ROSEBURG SEE VOL. 7, PG. 22 PLAT RECORDS

FD. 1/2" LP. S.E. CORNER OF LOT 2, BLOCK 1, CEDAR VALE SUB. AS RECORDED IN VOL. 7, PG. 22, PLAT RECORDS, DOUGLAS COUNTY, OREGON

SET BY DIST.-DIST. INTERSECTION

SET NAIL IN CONCRETE

3 1/2" WATER LINE CITY OF ROSEBURG

13,127 SQ. FT.

13,127 SQ. FT.

1" = 50'
JANUARY 1988

MAP FILE M 105-38