

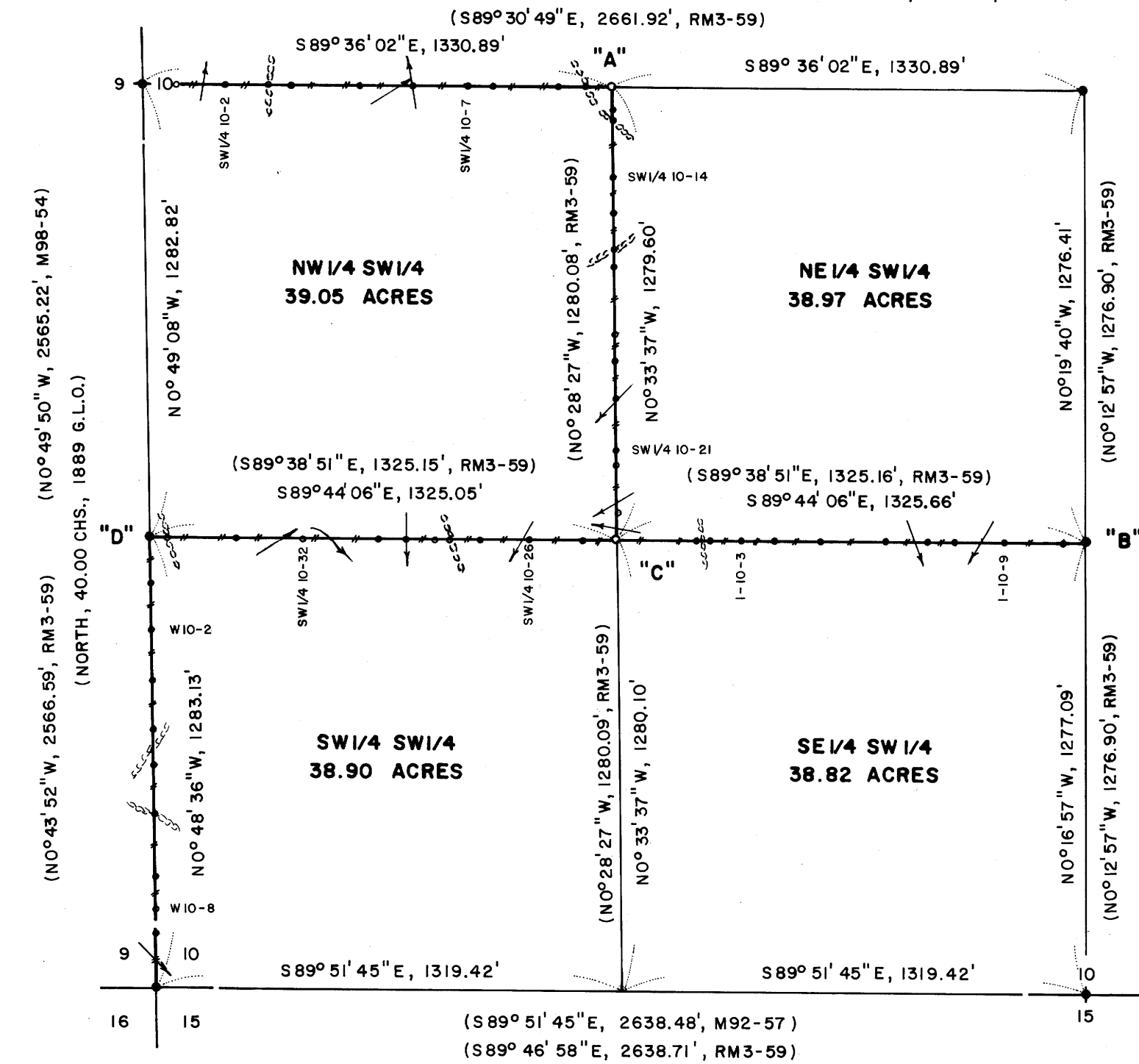
FILED
 DEC 29 1987
 COUNTY SURVEYOR
 DOUGLAS COUNTY, ORE.

WEST 1/4 CORNER SECTION 10

FD. 1982 BRASS CAP SET IN C.S. RM3-59
 20" FIR, S80°E, 84.2' (SCRIBE VIS.), 1982 B.T.
 30" HEMLOCK, S47°W, 74.6' (BARK SCRIBED), 1982 B.T.

CENTER 1/4 CORNER SECTION 10

FD. 1982 BRASS CAP SET IN C.S. RM3-59
 10" SPRUCE, S36°W, 43.5' (SCRIBE VIS.), 1982 B.T.
 18" ALDER, N89°E, 8.6' (BARK SCRIBE), 1982 B.T.
 30" CEDAR SNAG, N63°W, 80.3' (SCRIBE VIS.), 1982 B.T.



W. 1/4 COR.	LOCATION OF BURIED	MAGNETIC	MARKERS
SW 1/4 10-1	95' EAST (AL. POST)	SW 1/4 10-29	515' WEST (M.M.)
SW 1/4 10-2	230' EAST (M.M.)	SW 1/4 10-30	597' WEST (M.M.)
SW 1/4 10-3	351' EAST (M.M. & AL. POST)	SW 1/4 10-31	678' WEST (M.M. & AL. POST)
SW 1/4 10-4	412' EAST (M.M.)	SW 1/4 10-32	887' WEST (M.M. & AL. POST)
SW 1/4 10-5	614' EAST (M.M.)	SW 1/4 10-33	1082' WEST (M.M. & AL. POST)
SW 1/4 10-6	762' EAST (M.M. & AL. POST)	SW 1/4 10-34	1280' WEST (M.M.)
SW 1/4 10-7	911' EAST (M.M.)	S. 1/16 COR.	1325' WEST (AL. POST)
SW 1/4 10-8	991' EAST (M.M. & AL. POST)	W 10-1	137' SOUTH (M.M.)
SW 1/4 10-9	1179' EAST (M.M.)	W 10-2	267' SOUTH (M.M. & AL. POST)
SW 1/4 10-10	1257' EAST (M.M.)	W 10-3	407' SOUTH (M.M.)
C.W. 1/16	1331' EAST (M.M. & AL. POST)	W 10-4	546' SOUTH (M.M. & AL. POST)
SW 1/4 10-12	57' SOUTH (M.M.)	W 10-5	650' SOUTH (M.M.)
SW 1/4 10-13	96' SOUTH (M.M.)	W 10-6	786' SOUTH (M.M. & AL. POST)
SW 1/4 10-14	253' SOUTH (M.M. & AL. POST)	W 10-7	964' SOUTH (M.M.)
SW 1/4 10-15	355' SOUTH (M.M.)	W 10-8	1056' SOUTH (M.M. & AL. POST)
SW 1/4 10-16	457' SOUTH (M.M. & AL. POST)	W 10-9	1120' SOUTH (M.M.)
SW 1/4 10-17	504' SOUTH (M.M.)	S.W. COR.	1283' SOUTH (AL. POST)
SW 1/4 10-18	698' SOUTH (M.M.)	S.W. 1/16	0' EAST (M.M. & AL. POST)
SW 1/4 10-19	774' SOUTH (M.M. & AL. POST)	I-10-1	225' EAST (M.M.)
SW 1/4 10-20	879' SOUTH (M.M.)	I-10-2	261' EAST (M.M.)
SW 1/4 10-21	1030' SOUTH (M.M. & AL. POST)	I-10-3	350' EAST (M.M.)
SW 1/4 10-22	1070' SOUTH (M.M.)	I-10-4	446' EAST (M.M.)
SW 1/4 10-23	1207' SOUTH (M.M.)	I-10-5	576' EAST (M.M.)
S.W. 1/16	1280' SOUTH (M.M. & AL. POST)	I-10-6	760' EAST (M.M.)
SW 1/4 10-25	97' WEST (M.M.)	I-10-7	876' EAST (M.M.)
SW 1/4 10-26	250' WEST (M.M. & AL. POST)	I-10-8	950' EAST (M.M.)
SW 1/4 10-27	388' WEST (M.M.)	I-10-9	1098' EAST (M.M.)
SW 1/4 10-28	475' WEST (M.M. & AL. POST)	I-10-10	1259' EAST (M.M.)
SW 1/4 10-29	515' WEST (M.M.)	C.S. 1/16	1326' EAST

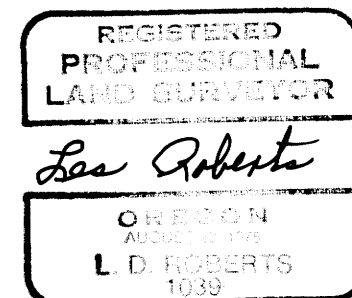
SURVEY OF S.W. 1/4
 SECTION 10, T22S, R12W, W.M.
 DOUGLAS COUNTY, OREGON
 FOR
 INTERNATIONAL PAPER COMPANY
 BY

ROBERTS SURVEYING INC.
 29 WEST 29TH STREET
 EUGENE, OREGON 97405
 DECEMBER 8, 1987

COUNTY SURVEYORS FILE DATA
 DO NOT REMOVE FROM OFFICE

LEGEND

- CORNERS FOUND AND USED FOR CONTROL
- CORNERS SET, 5/8" ALUMINUM RODS WITH 3/4" ALUMINUM CAPS. CAPS STAMPED S-T-R, DATE AND P.L.S. 1039.
- LINES MARKED AND BLAZED THIS SURVEY.
- () DATA OF RECORD, 1889 G.L.O. SURVEY AND C.S. RM3-59. ALSO C.S. M98-54 AND M92-57
- (M.M.) INDICATES LOCATION OF BURIED MAGNETIC MARKERS. MARKERS ARE FLUORESCENT ORANGE IN COLOR AND ARE BURIED, 12" TO 18" DEEP, ALONG LINE AS SHOWN.
- BASIS OF BEARING, WEST 1/2 OF SOUTH LINE SECTION 10 FROM C.S. M92-57.
- DISTANCES TO B.T.'S ARE CENTER MEASURE.
- ALL NEW B.T.'S ARE SCRIBED AND HAVE AN ALUMINUM WASHER STAMPED "P.L.S. 1039" NAILED TO LOWER BLAZE. SCRIBED BLAZES ARE PAINTED RED.
- ALL NEW B.T.'S HAVE A 8" STEEL SPIKE DRIVEN INTO THE CENTER OF THE TREE TO SERVE AS A CHAINING POINT FOR MEASURED DISTANCES.



SCALE 1" = 400'

NARRATIVE

THE PURPOSE OF THIS SURVEY IS TO POST AND BLAZE THE NORTH, EAST AND SOUTH SIDES OF THE NW 1/4 OF THE SW 1/4, THE SOUTH SIDE OF THE NE 1/4 OF THE SW 1/4 AND THE WEST SIDE OF THE SW 1/4 OF THE SW 1/4. ALL CONTROLLING CORNERS WERE FOUND IN THE FIELD AS SET IN C.S. RM3-59 AND IN C.S. M92-57. THE C.W. 1/16 CORNER WAS SET HALFWAY BETWEEN THE WEST 1/4 CORNER AND THE CENTER 1/4 CORNER AS SHOWN. THE S.W. 1/16 CORNER WAS SET AT THE INTERSECTION OF THE N-S AND E-W CENTERLINES OF THE SW 1/4 OF SECTION 16, AS SHOWN. A CLOSED MEANDER, WILD T-16 THEODOLITE AND DI-4L E.D.M., TRAVERSE WAS RUN ALONG ALL LINES TO BE BLAZED AND POSTED. OFFSETS WERE COMPUTED FROM THIS MEANDER TRAVERSE TO THE TRUE PROPERTY LINE. PROPERTY LINES WERE MARKED WITH RED PAINTED BLAZES, RED RIBBON, YELLOW INTERNATIONAL PAPER BOUNDARY LINE SIGNS ATTACHED TO 60" ALUMINUM POSTS AND FLUORESCENT ORANGE MAGNETIC MARKERS. ALUMINUM POSTS AND BURIED MAGNETIC MARKERS ARE REFERENCED BY A 4" x 6" ALUMINUM BOUNDARY LINE TAG NAILED TO A NEARBY TREE. TAG NOTES BEARING AND DISTANCE FROM TREE TO ALUMINUM POST OR BURIED MAGNETIC MARKER.

S.W. CORNER SECTION 10

FD. 1982 BRASS CAP SET IN C.S. M92-57
 60" SPRUCE STUMP, S06°W, 55.7' (SCRIBE VIS.), 1889 B.T.
 12" HEMLOCK, S25°E, 17.0' (SCRIBE VIS.), 1982 B.T.
 12" ALDER, N46°E, 38.4' (BARK SCRIBED), 1982 B.T.
 16" ALDER, N31°W, 37.6' (BARK SCRIBED), 1982 B.T.
 16" HEMLOCK, S43°W, 55.4' (SCRIBE VIS.), 1982 B.T.

SOUTH 1/4 CORNER SECTION 10

FD. 1982 BRASS CAP SET IN C.S. M92-57.
 12" ALDER, N68°W, 11.0' (BARK SCRIBED), 1982 B.T.
 14" ALDER, S16°W, 5.4' (BARK SCRIBED), 1982 B.T.

"A" C.W. 1/16 CORNER SECTION 10

SET 5/8" x 48" ALUMINUM ROD WITH 3/4" ALUMINUM CAP.
 (BURIED PURPLE M.M. BESIDE 48" ALUMINUM ROD)
 9" CEDAR, N65°E, 32.1' (SCRIBED/PAINTED RED)
 21" SPRUCE, N35°W, 33.5' (SCRIBED/PAINTED RED)

"B" C.S. 1/16 CORNER SECTION 10

FD. 1982 BRASS CAP SET IN C.S. RM3-59
 12" HEMLOCK, N80°W, 32.8' (SCRIBE VIS.), 1982 B.T.
 14" FIR, S04°E, 20.0' (SCRIBE VIS.), 1982 B.T.
 14" FIR, N04°W, 55.4' (SCRIBE VIS.), 1982 B.T.

"C" S.W. 1/16 CORNER SECTION 10

SET 5/8" x 48" ALUMINUM ROD WITH 3/4" ALUMINUM CAP.
 (BURIED PURPLE M.M. BESIDE 48" ALUMINUM ROD)
 8" ALDER, N84°W, 23.4' (BARK SCRIBED/PAINTED RED)
 9" ALDER, N05°W, 45.7' (BARK SCRIBED/PAINTED RED)

"D" SOUTH 1/16 CORNER SECTION 10

FD. 1982 BRASS CAP SET IN C.S. RM3-59
 12" FIR, S69°E, 22.1' (SCRIBE VIS.), 1982 B.T.
 13" FIR, S14°W, 15.7' (SCRIBE VIS.), 1982 B.T.

C.S. FILE 63-155
 Map File M105-29

M105-29
 63-155