

SECTION CORNER 11,12,13,14
 FOUND: 1-1/4" IRON PIPE WITH DOUGLAS CO. BRASS CAP "1958"
 33" DOUBLE CEDAR, NORTH, 53.0'
 25" FIR, S 69E, 167.7' - CLOSED FACE
 41" L. CEDAR, N 49-1/4E, 94.1' - CLOSED FACE
 44" W. FIR, S 77-1/4W, 7.9' - CLOSED FACE

1/4 CORNER 12 & 13
 FOUND: 1" ALUMINUM PIPE
 30" FIR SNAG, N 82-1/4E, 26.3' - SCRIBE VISIBLE
 19" W. FIR, S 44-3/4W, 39.3' - CLOSED FACE

SECTION CORNER 7,12,13,18
 FOUND: 1-1/4" IRON PIPE WITH DOUGLAS CO. BRASS CAP "1958"
 28" CEDAR, N 75E, 8.1' - CLOSED FACE
 26" CEDAR, S 49E, 5.2' - CLOSED FACE
 7" FIR SNAG, S 46W, 8.2' - CLOSED FACE
 12" YEW, N 38W, 16.9' - SCRIBE VISIBLE

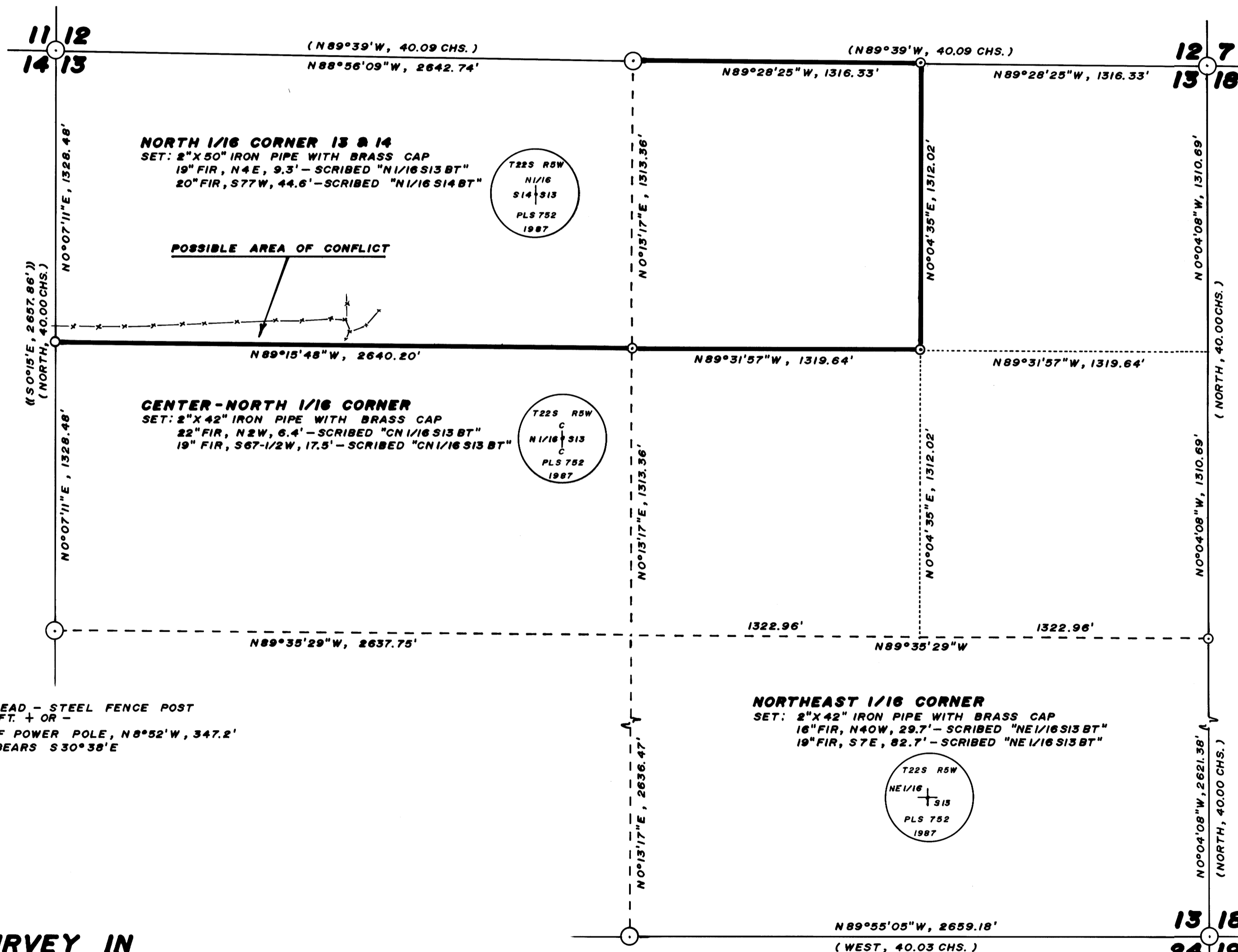
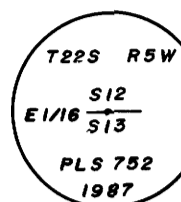
FILED TF
 DEC 23 1987
 COUNTY SURVEYOR
 DOUGLAS COUNTY, ORE.

72-501 W

- NARRATIVE -

THIS SURVEY WAS MADE IN OCTOBER, NOVEMBER AND DECEMBER, 1987 BY DONALD L. PEEL OF PEEL BAKER LAND SURVEYING INC., 1262 LAWRENCE ST. - SUITE 4, EUGENE, OREGON. THE PURPOSE OF THIS SURVEY WAS TO LOCATE AND MARK THE PROPERTY LINES OF THE LAND OWNED BY WEYERHAEUSER COMPANY IN SECTION 13, T22S, R5W, W.M.. A WILD T1000 THEOMAT AND DISS E.D.M. WERE USED TO PERFORM THIS SURVEY. CLOSED RANDOM TRAVERSES WERE RUN BETWEEN FOUND CORNERS FOR CONTROL. BEARINGS WERE BASED ON A SOLAR OBSERVATION. A CLOSED RANDOM TRAVERSE WAS RUN AS CLOSE AS POSSIBLE TO THE PROPERTY LINE TO BE MARKED. OFFSETS FROM THE RANDOM TRAVERSE LINE TO THE TRUE PROPERTY LINE WERE CALCULATED AND USED TO DETERMINE THE POSITION OF THE TRUE PROPERTY LINE. THE TRUE PROPERTY LINE WAS MARKED IN THE FIELD BY BLAZING TREES (BLAZES NOTCHED AND PAINTED RED) ON BOTH SIDES OF THE TRUE LINE. THE EAST 1/4 CORNER WAS SEARCHED FOR BUT NOT FOUND. SAID 1/4 CORNER WAS SET AT MIDPOINT BETWEEN THE NORTHEAST AND SOUTHEAST SECTION CORNERS. THE POSITION FOR THE CENTER 1/4 CORNER WAS DETERMINED (BUT NOT SET) AT THE POINT OF INTERSECTION OF THE NORTH-SOUTH AND EAST-WEST CENTERLINES. THE EAST 1/16 CORNER BETWEEN SECTIONS 12 AND 13 WAS SET AT MIDPOINT BETWEEN THE NORTH 1/4 CORNER AND THE NORTHEAST SECTION CORNER. THE CENTER-NORTH 1/16 CORNER WAS SET AT MIDPOINT BETWEEN THE NORTH 1/4 CORNER AND THE EAST 1/4 CORNER AND THE POSITION FOR THE CENTER 1/4 CORNER. THE POSITION FOR THE NORTH 1/16 CORNER BETWEEN SECTIONS 13 AND 18 WAS DETERMINED (BUT NOT SET) AT MIDPOINT BETWEEN THE EAST 1/4 CORNER AND THE NORTHEAST SECTION CORNER. THE POSITION FOR THE CENTER-EAST 1/16 CORNER WAS DETERMINED (BUT NOT SET) AT MIDPOINT BETWEEN THE EAST 1/4 CORNER AND THE POSITION FOR THE CENTER 1/4 CORNER. THE NORTHEAST 1/16 CORNER WAS SET AT THE POINT OF INTERSECTION OF THE NORTH-SOUTH AND EAST-WEST CENTERLINES OF THE NORTHEAST QUARTER. THE NORTH 1/16 CORNER BETWEEN SECTIONS 13 AND 14 WAS SET AT MIDPOINT BETWEEN THE WEST 1/4 CORNER AND THE NORTHWEST SECTION CORNER. ALL CORNERS SET IN THIS SURVEY WERE MONUMENTED AS SHOWN ON THIS PLAT. FOR ALL BEARING TREES MARKED IN THIS SURVEY, THE DISTANCES WERE MEASURED TO A "W" NAIL IN THE LOWER BLAZE AND BEARINGS ARE MAGNETIC, VARIATION 20°.

EAST 1/16 CORNER 12 & 13
 SET: 2" X 50" IRON PIPE WITH BRASS CAP
 12" FIR, N 55E, 17.5' - SCRIBED "E 1/16 S12 BT"
 13" FIR, S 36-1/2E, 39.0' - SCRIBED "E 1/16 S13 BT"
 19" FIR, S 40-1/2W, 12.2' - SCRIBED "E 1/16 S13 BT"
 (DIST. TO RR. SPIKE IN LOWER BLAZE)



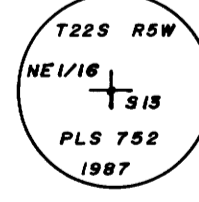
NORTH 1/16 CORNER 13 & 14
 SET: 2" X 50" IRON PIPE WITH BRASS CAP
 19" FIR, N 4E, 9.3' - SCRIBED "N 1/16 S13 BT"
 20" FIR, S 77W, 44.6' - SCRIBED "N 1/16 S14 BT"



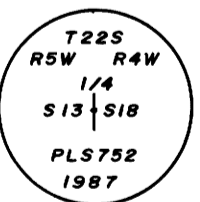
CENTER-NORTH 1/16 CORNER
 SET: 2" X 42" IRON PIPE WITH BRASS CAP
 22" FIR, N 2W, 6.4' - SCRIBED "CN 1/16 S13 BT"
 19" FIR, S 67-1/2W, 17.5' - SCRIBED "CN 1/16 S13 BT"



NORTHEAST 1/16 CORNER
 SET: 2" X 42" IRON PIPE WITH BRASS CAP
 16" FIR, N 40W, 29.7' - SCRIBED "NE 1/16 S13 BT"
 19" FIR, S 7E, 82.7' - SCRIBED "NE 1/16 S13 BT"



1/4 CORNER 13 & 18
 SET: 2" X 42" IRON PIPE WITH BRASS CAP
 14" FIR, S 52E, 16.9' - SCRIBED "1/4 S18 BT"
 20" FIR, S 47W, 23.2' - SCRIBED "1/4 S13 BT"



1/4 CORNER 13 & 14
 FOUND: IRON BOLT WITH 1" HEAD - STEEL FENCE POST
 SOUTHERLY 1 FT. +/- OR -
 SAWED OFF BASE OF POWER POLE, N 8°52'W, 347.2'
 NEW POWER POLE BEARS S 30°38'E

**SURVEY IN
 NORTH 1/2 SEC. 13, T22S, R5W, W.M.
 DOUGLAS COUNTY, OREGON**

FOR
WEYERHAEUSER COMPANY
 BY
PEEL BAKER LAND SURVEYING INC.
 DECEMBER 4, 1987

1/4 CORNER 13 & 24
 FOUND: 5/8" REBAR (RENEWAL NO. 146)
 46" CEDAR, N 46E, 23.0'

SECTION CORNER 13, 18, 19, 24
 FOUND: 1-1/4" IRON PIPE WITH DOUGLAS CO. BRASS CAP "1958"
 21" W. FIR, S 30E, 25.5' - CLOSED FACE
 13" W. FIR, S 42W, 18.9' - CLOSED FACE
 26" FIR, N 65W, 80.1' - CLOSED FACE

REGISTERED
 PROFESSIONAL
 LAND SURVEYOR

Donald L. Peel

OREGON
 JULY 8, 1966
 DONALD L. PEEL
 752

COUNTY SURVEYORS FILE DATA
 DO NOT REMOVE FROM OFFICE

WAP FILE M105-27