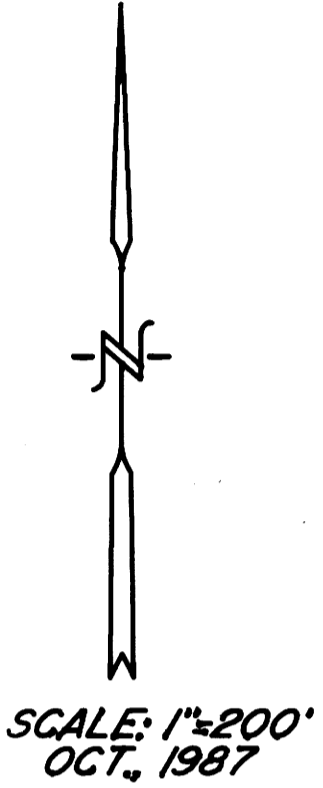
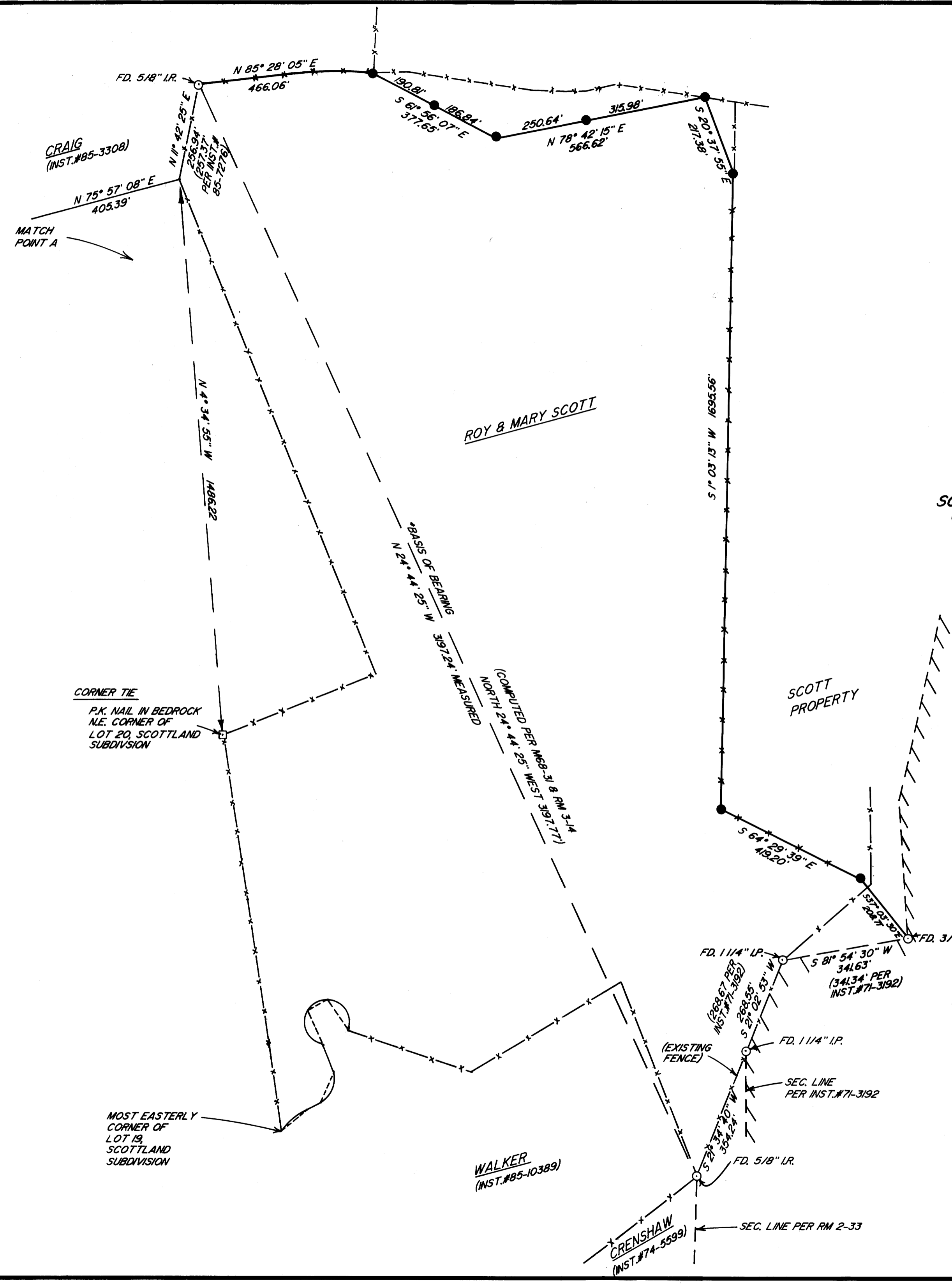


COUNTY SURVEYORS FILE DATA
DO NOT REMOVE FROM OFFICE

FILED
OCT 23 1987
COUNTY SURVEYOR
DOUGLAS COUNTY, ORE

A SURVEY FOR ROY & MARY SCOTT IN THE NE 1/4 & NW 1/4 SEC. 12, AND THE SW 1/4 SEC. 1, T24S, R7W, W.M. DOUGLAS COUNTY, OREGON



LEGEND:

- — FOUND AS NOTED
- SET 5/8"x30" I.R./
- — PLASTIC CAP MKD. "BENTZ SURV. INC."

NARRATIVE:

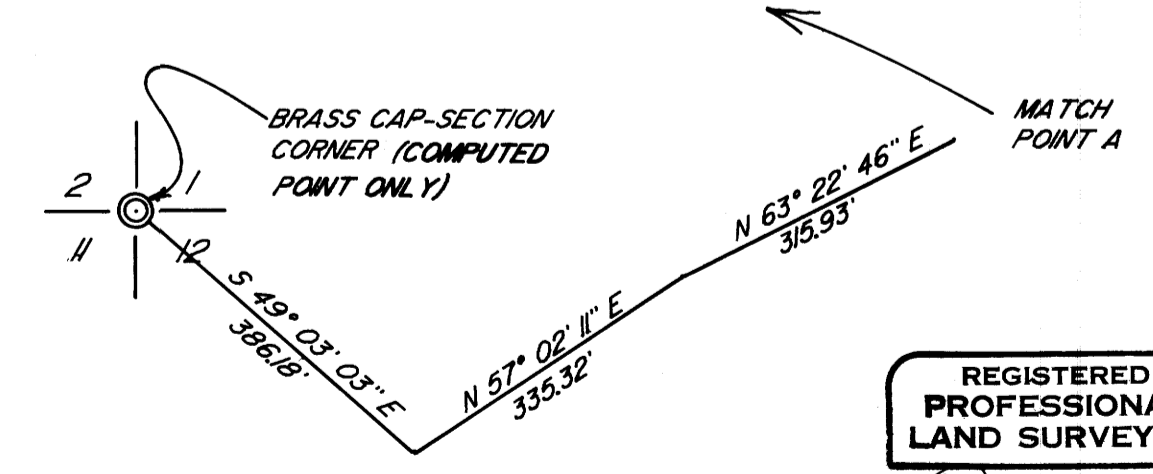
PURPOSE OF SURVEY: LEGAL DESCRIPTION FOR LAND PARTITION OVER 10 ACRES. MONUMENTS WERE SET AS REQUESTED BY ROY SCOTT.

FIELD CREW: J. ARTMAN, B. BROWNING
COMPUTATIONS: G. LANG
EQUIPMENT: WILD T1 & RED I EDM
DRAFTING: M. JOHNSON

SURVEYED BY:

DONALD A. BENTZ
P.O. BOX 901
WINCHESTER, OR.
97495

* NOTE: BASIS OF BEARING IS COMPUTED PER COORDINATES FROM OUR SURVEYS M68-31 & RM 3-14. BOTH SURVEYS WERE PERFORMED ON SAME BASIS.



REGISTERED
PROFESSIONAL
LAND SURVEYOR

Donald A. Bentz
OREGON
JULY 12, 1968
DONALD A. BENTZ
839

MAP FILE M105-2

M105-2