

# RECORD OF SURVEY

## SLICK II CADASTRAL SURVEY No. 53-04T0-7-8640

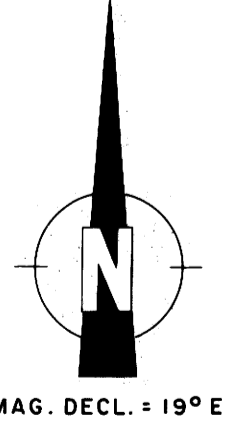
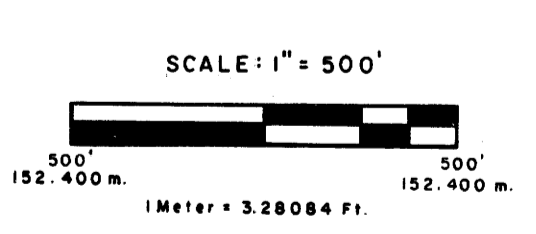
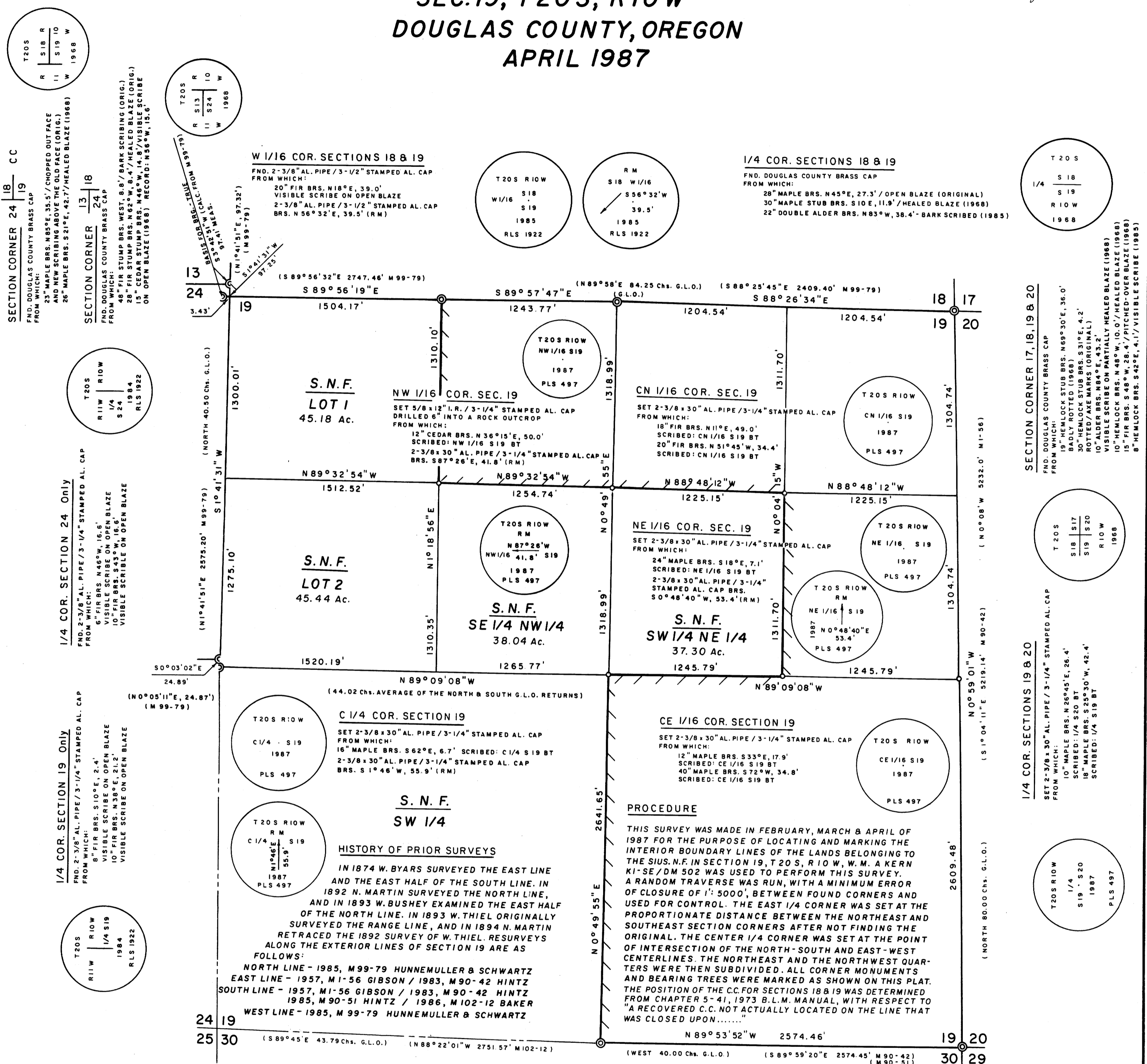
### FOR SIUSLA NATIONAL FOREST

#### SEC. 19, T20S, R10W

#### DOUGLAS COUNTY, OREGON

#### APRIL 1987

FILED  
MAY 14 1987  
COUNTY SURVEYOR  
DOUGLAS COUNTY, ORE.



**LEGEND**  
MONUMENTS FOUND AS NOTED  
MONUMENTS SET AS NOTED  
LINES POSTED / 6" FIBERGLASS  
U.S.F.S. BOUNDARY SIGN POSTS

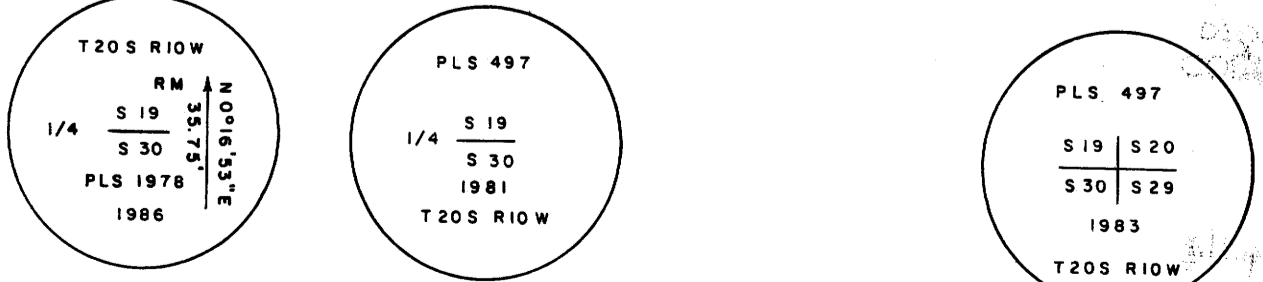
**1/4 COR. SECTIONS 19 & 30**  
FND. 1-1/4" I.P. / STAMPED BRASS CAP (PLS 497-1981)  
FROM WHICH:  
16" FIR BRS. S48°30'E, 30.3' (HEALED BLAZE)  
22" CEDAR BRS. N60°W, 46.0' (VISIBLE SCRIBE ON PARTIALLY HEALED BLAZE)  
2-3/8" AL PIPE / 3-1/4" STAMPED AL. CAP BRS  
S0°16'33"W, 35.75' (RM)

**SECTION CORNER 19, 20, 29 & 30**  
FND. 1-1/4" I.P. / STAMPED BRASS CAP (PLS 497-1983)  
FROM WHICH:  
27" HEMLOCK STUMP BRS. N61°05'E, 15.1' TO A 1/2x30" I.R. SET IN THE TOP CENTER (VISIBLE SCRIBE ON PARTIALLY HEALED BLAZE)  
24" FIR STUMP BRS. S82°05'E, 24.1' TO A 1/2x30" I.R. SET IN THE TOP CENTER (HEALED BLAZE)  
42" FIR STUMP BRS. S61°10'W, 42.5' TO A 1/2x30" I.R. SET IN THE TOP CENTER (NO VISIBLE SCRIBE ON ROTTED BLAZE)  
37" FIR STUMP BRS. N15°27'W, 20.6' TO A 1/2x30" I.R. SET IN THE TOP CENTER (VISIBLE SCRIBE ON ROTTED BLAZE)

**HISTORY OF PRIOR SURVEYS**  
IN 1874 W. BYARS SURVEYED THE EAST LINE AND THE EAST HALF OF THE SOUTH LINE. IN 1892 N. MARTIN SURVEYED THE NORTH LINE, AND IN 1893 W. BUSHEY EXAMINED THE EAST HALF OF THE NORTH LINE. IN 1893 W. THIEL ORIGINALLY SURVEYED THE RANGE LINE, AND IN 1894 N. MARTIN RETRACED THE 1892 SURVEY OF W. THIEL. RESURVEYS ALONG THE EXTERIOR LINES OF SECTION 19 ARE AS FOLLOWS:  
NORTH LINE - 1985, M99-79 HUNNEMULLER & SCHWARTZ  
EAST LINE - 1957, M1-56 GIBSON / 1983, M90-42 HINTZ  
SOUTH LINE - 1957, M1-56 GIBSON / 1983, M90-42 HINTZ  
1985, M90-51 HINTZ / 1986, M102-12 BAKER  
WEST LINE - 1985, M99-79 HUNNEMULLER & SCHWARTZ

**PROCEDURE**  
THIS SURVEY WAS MADE IN FEBRUARY, MARCH & APRIL OF 1987 FOR THE PURPOSE OF LOCATING AND MARKING THE INTERIOR BOUNDARY LINES OF THE LANDS BELONGING TO THE SIUSLA NATIONAL FOREST. A KERN KI-SE / DM 502 WAS USED TO PERFORM THIS SURVEY. A RANDOM TRAVERSE WAS RUN, WITH A MINIMUM ERROR OF CLOSURE OF 1:5000, BETWEEN FOUND CORNERS AND USED FOR CONTROL. THE EAST 1/4 CORNER WAS SET AT THE PROPORTIONATE DISTANCE BETWEEN THE NORTHEAST AND SOUTHEAST SECTION CORNERS AFTER NOT FINDING THE ORIGINAL. THE CENTER 1/4 CORNER WAS SET AT THE POINT OF INTERSECTION OF THE NORTH-SOUTH AND EAST-WEST CENTERLINES. THE NORTHEAST AND THE NORTHWEST QUARTERS WERE THEN SUBDIVIDED. ALL CORNER MONUMENTS AND BEARING TREES WERE MARKED AS SHOWN ON THIS PLAT. THE POSITION OF THE C.C. FOR SECTIONS 18 & 19 WAS DETERMINED FROM CHAPTER 5-41, 1973 B.L.M. MANUAL, WITH RESPECT TO "A RECOVERED C.C. NOT ACTUALLY LOCATED ON THE LINE THAT WAS CLOSED UPON....."

I, RICHARD J. HINTZ, REGISTERED LAND SURVEYOR IN THE STATE OF OREGON, DO HEREBY CERTIFY THAT THIS PLAT AND THE NOTES HEREON ARE A TRUE AND CORRECT REPRESENTATION OF A SURVEY PERFORMED AT THE REQUEST OF THE U.S. D.A., FOREST SERVICE, IN ACCORDANCE WITH THE STATUTES OF THE STATE OF OREGON AND THE B.L.M. MANUAL OF SURVEY INSTRUCTIONS, 1973.  
*Richard J. Hintz*  
Richard J. Hintz  
1890 N. 14th Street, Coos Bay, Or. 97420



BEARING TREES ESTABLISHED FOR THIS SURVEY ARE MARKED IN ACCORDANCE WITH THE B.L.M. MANUAL OF SURVEY INSTRUCTIONS. A BRASS WASHER STAMPED "PLS 497" WAS NAILED TO THE LOWER BLAZE, AND DISTANCES WERE TAKEN TO A 50d. NL. DRIVEN IN THE SIDE CENTER.