

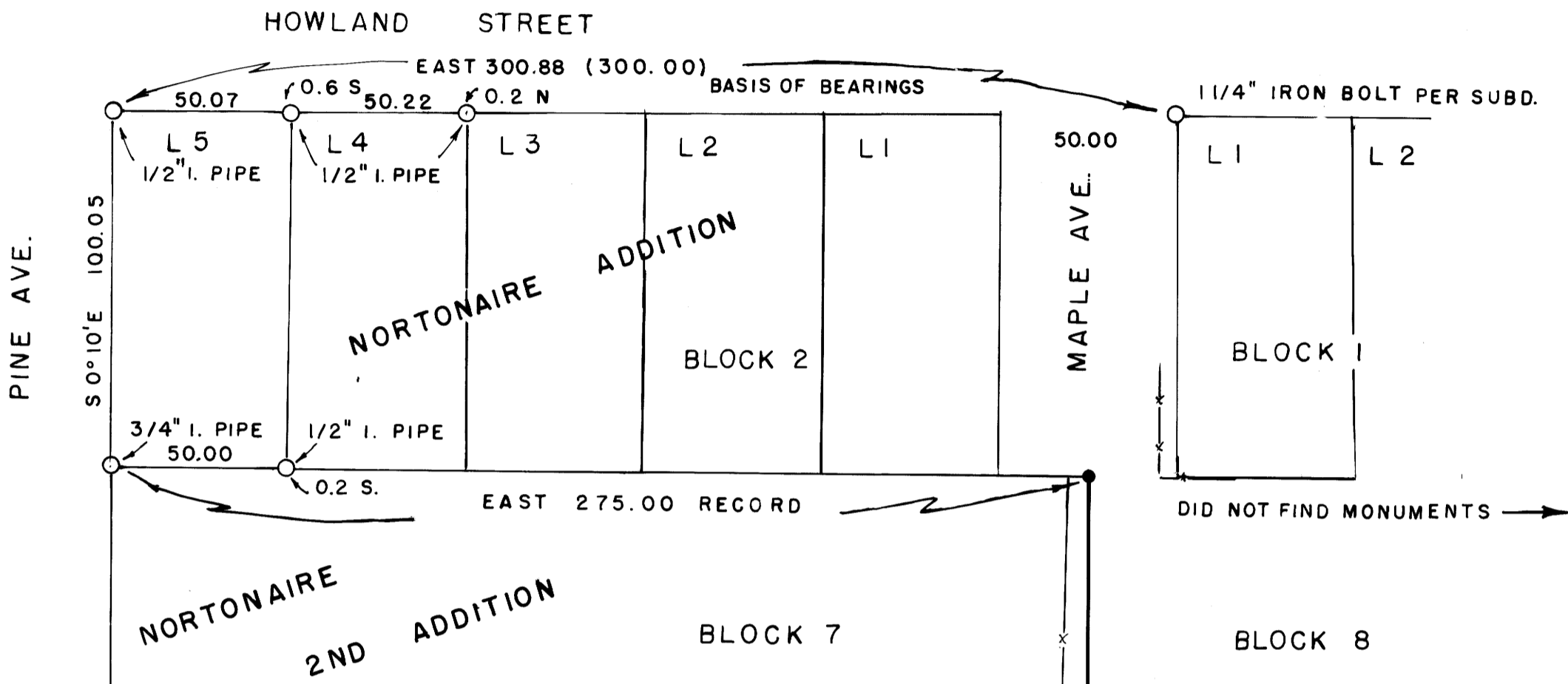
COUNTY SURVEYORS FILE DATA
DO NOT REMOVE FROM OFFICE

NW 1/4 SEC. 27 T.29S. R.5W. W.M.

FILED

OCT 7 1987

COUNTY SURVEYOR
DOUGLAS COUNTY, ORE.



LEGEND

- SET 5/8" X 30" IRON ROD, 1 1/2" PLASTIC CAP "LS 866
- FOUND AS NOTED
- x— FENCE
- () RECORD

NARRATIVE:

SET CORNERS AT RECORD DISTANCE & BEARING
 INSTRUMENTS: T60D LIETZ THEODOLITE, BEETLE E.D.M.
 100 FT. STEEL TAPE

SURVEYED for & by THE CITY OF MYRTLE CREEK
 P.O. BOX 940, MYRTLE CREEK 97457

SEPT. 1987

JOHNSON KNOWS THAT THE
 FENCE IS NOT ON LINE.
 THE FENCE WILL BE MOVED.

CONTINUE 62.9 PER PLAT
 TO CENTER OF CREEK