

RECORD OF SURVEY

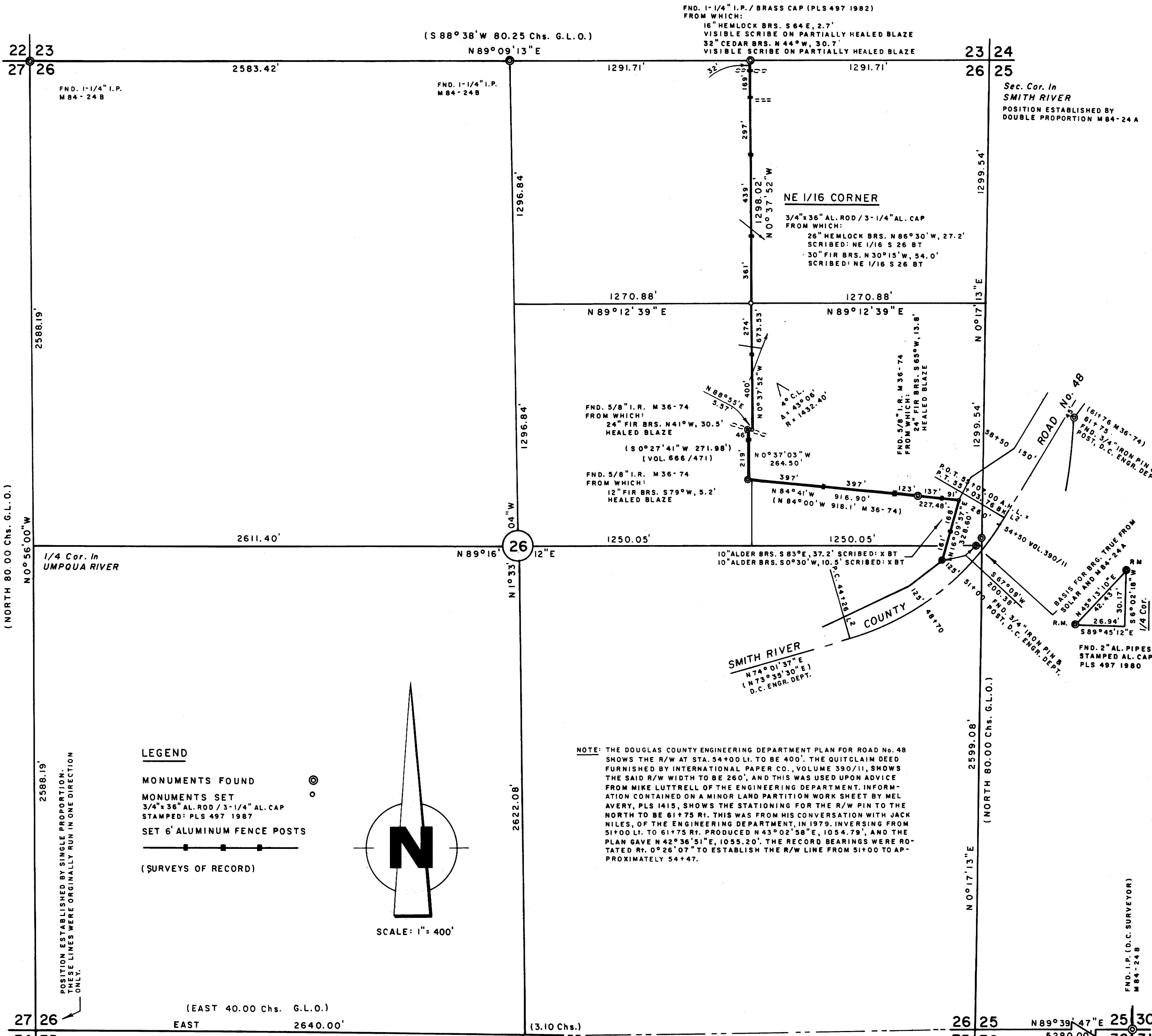
FOR INTERNATIONAL PAPER COMPANY

EAST GARDINER SURVEY

SECTION 26, T21S, R12W

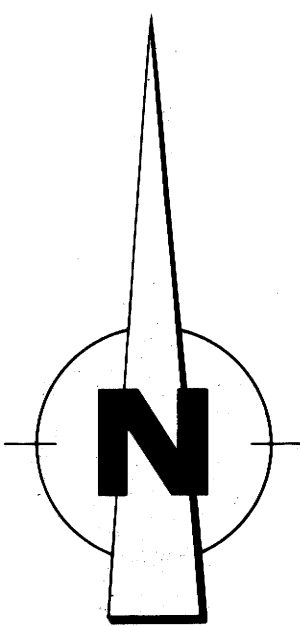
SEPT. 1987

FILED TF
SEP 29 1987
COUNTY SURVEYOR
DOUGLAS COUNTY, ORE.



LEGEND

- MONUMENTS FOUND
- MONUMENTS SET
- SET 6" ALUMINUM FENCE POSTS
- (SURVEYS OF RECORD)



SCALE: 1" = 400'

NOTE: THE DOUGLAS COUNTY ENGINEERING DEPARTMENT PLAN FOR ROAD No. 48 SHOWS THE R/W AT STA. 54+00 LI. TO BE 400'. THE QUITCLAIM DEED FURNISHED BY INTERNATIONAL PAPER CO., VOLUME 390/11, SHOWS THE SAID R/W WIDTH TO BE 260', AND THIS WAS USED UPON ADVICE FROM MIKE LUTTRELL OF THE ENGINEERING DEPARTMENT. INFORMATION CONTAINED ON A MINOR LAND PARTITION WORK SHEET BY MEL AVERY, PLS 1415, SHOWS THE STATIONING FOR THE R/W PIN TO THE NORTH TO BE 61+75 RI. THIS WAS FROM HIS CONVERSATION WITH JACK NILES, OF THE ENGINEERING DEPARTMENT, IN 1979. INVERTING FROM 51+00 LI. TO 61+75 RI. PRODUCED N 43° 02' 58" E, 1054.79', AND THE PLAN GAVE N 42° 36' 51" E, 1055.20'. THE RECORD BEARINGS WERE ROTATED R. 0° 26' 07" TO ESTABLISH THE R/W LINE FROM 51+00 TO APPROXIMATELY 54+47.

NARRATIVE

THE PURPOSE OF THIS SURVEY WAS TO MARK THE INDICATED BOUNDARY LINES. A KERN KI-SE/DM 502 WAS USED TO PERFORM THIS SURVEY WITH A RANDOM CONTROL TRAVERSE RUN BETWEEN THE FOUND CORNERS. OFFSETS FROM THE RANDOM TRAVERSE TO THE TRUE PROPERTY LINES WERE CALCULATED, AND USED TO DETERMINE THE POSITION OF THE TRUE PROPERTY LINES. THE TRUE LINES WERE MARKED WITH RED PAINTED BLAZES ON BOTH SIDES OF THE LINE. SIX FOOT ALUMINUM FENCE POSTS WERE SET AS SHOWN ON THE ACCOMPANYING PLAT, WITHIN ONE FOOT OF THE TRUE LINE. THE POSTS WERE REFERENCED BY A DISTANCE AND BEARING TO A NEARBY TREE, A YELLOW ALUMINUM SIGN MARKED "INTERNATIONAL PAPER - BOUNDARY" WITH THE DISTANCE AND BEARING FROM THE SIGN TO THE POST WAS NAILED LOW ON THE SAID TREE. A DECAL WAS ATTACHED TO THE POST WITH THE PRINTED FIRST LETTER OF THE CARDINAL DIRECTION AND DISTANCE (ROUNDED TO THE NEAREST FOOT) TO THE NEAREST CORNER MONUMENT. A FLUORESCENT ORANGE MAGNETIC MARKER WAS BURIED APPROXIMATELY 12" BELOW THE GROUND AND ALONGSIDE OF EACH POST. MAGNETIC MARKERS WERE ALSO BURIED AT RANDOM POINTS ALONG THE TRUE LINE AND REFERENCED AS PREVIOUSLY DESCRIBED. AN ALUMINUM FENCE POST AND A BURIED MAGNETIC MARKER WAS PLACED BY EACH MONUMENT. THE DISTANCE TO EACH NEW BEARING TREE WAS TAKEN TO A 50d. NAIL IN THE SIDE CENTER OF THE TREE.

**REGISTERED
PROFESSIONAL
LAND SURVEYOR**

Richard J. Hintz

OREGON
MAY 16, 1980
RICHARD J. HINTZ
497

RICHARD J. HINTZ
1890 N. 14th ST.
COOS BAY, OREGON