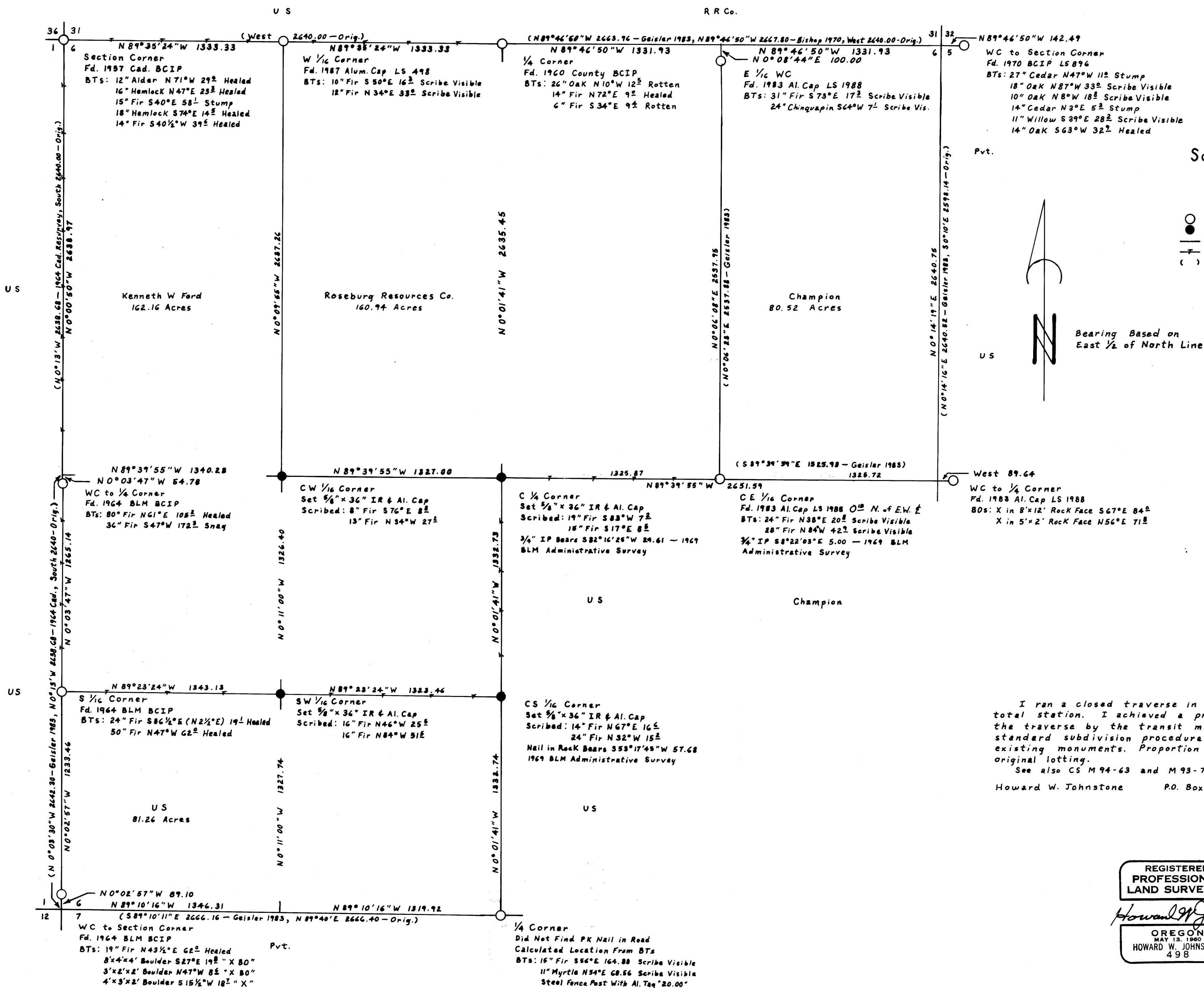


Resurvey And Subdivision of N 1/2 And SW 1/4 of Section 6, T 25 S, R 7 W, W. M., Oregon

For Roseburg Resources Company & Kenneth W. Ford

August 17, 1987



Scale: 1" = 400'

Legend

- Monument Found as Noted
- Set 5/8" IR & Alum. Cap Marked "LS 498"
- Section or Property Line
- - - Line Referenced to Aluminum Tags
- () Record Data



Bearing Based on East 1/2 of North Line

I ran a closed traverse in Section 6 using a Nikon NTD 4 total station. I achieved a precision of 1:61472 and adjusted the traverse by the transit method. I set the corners by standard subdivision procedure based on the location of the existing monuments. Proportion in the SW 1/4 is based on the original lotting.
See also CS M 94-63 and M 93-79

Howard W. Johnstone P.O. Box 1088 Roseburg, Oregon

REGISTERED
PROFESSIONAL
LAND SURVEYOR

Howard W. Johnstone

OREGON
MAY 13, 1980
HOWARD W. JOHNSTONE
498