

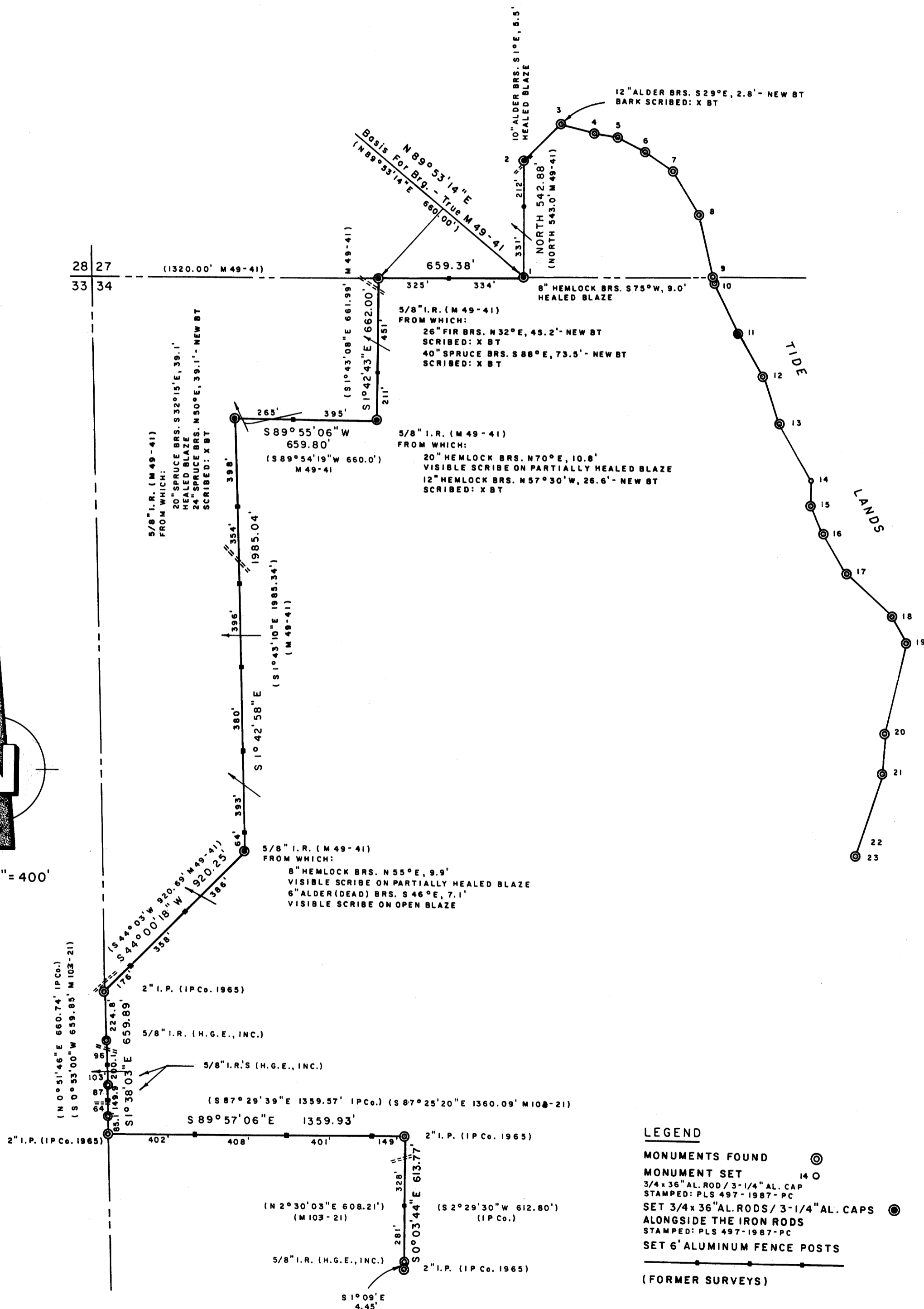
RECORD OF SURVEY

FOR INTERNATIONAL PAPER COMPANY REEDSPORT OVERLOOK SURVEY SECTIONS 27 & 34, T21S, R12W JULY 1987

FILED *JR*

JUL 8 1987 *TF*

COUNTY SURVEYOR
DOUGLAS COUNTY, ORE. *TF*



No.	BEARING	DISTANCE	MONUMENT
1			5/8" I.R.
2	NORTH	543.0'	5/8" I.R.
3	N 44° 45' E	241.59'	3/4" I.P.
4	S 75° 12' E	167.39'	1/2" I.P.
5	S 78° 47' E	115.88'	1/2" I.P.
6	S 62° 26' E	147.76'	3/4" I.P.
7	S 55° 31' E	162.98'	5/8" I.R.
8	S 32° 03' E	233.73'	5/8" I.R.
9	S 13° 12' E	294.65'	5/8" I.R.
10	S 13° 12' E	19.54'	3/4" I.P.
11	S 26° 25' E	264.66'	3/4" I.P.
12	S 30° 21' E	226.62'	3/4" I.P.
13	S 20° 05' E	233.90'	3/4" I.P.
14	S 31° 14' E	299.20'	3/4" AL. ROD/AL. CAP
15	S 0° 55' E	115.60'	3/4" I.P.
16	S 26° 05' E	140.97'	3/4" I.P.
17	S 30° 27' E	207.65'	3/4" I.P.
18	S 47° 32' E	296.68'	1/2" I.P.
19	S 29° 08' E	138.80'	3/4" I.P.
20	S 16° 08' W	436.19'	1/2" I.P.
21	S 7° 42' W	195.07'	1/2" I.P.
22	S 16° 43' W	310.05'	NOT FND.
23	S 16° 43' W	62' ±	5/8" I.R.

NOTE: THE ABOVE IS THE RECORD FROM M49-41. No. 14 WAS REPLACED BY USING THE RECORD DISTANCE AND BEARING FROM No. 15. A 6" ALUMINUM FENCE POST WITH AN ATTACHED "LAND SURVEY MONUMENT" SIGN AND MAGNET WERE PLACED AT EACH MONUMENT.

NARRATIVE

THE PURPOSE OF THIS SURVEY WAS TO MARK THE INDICATED BOUNDARY LINES. A KERN KI-SE/DM 502 WAS USED TO PERFORM THIS SURVEY WITH A RANDOM TRAVERSE RUN BETWEEN THE FOUND CORNERS. OFFSETS FROM THE RANDOM TRAVERSE TO THE TRUE PROPERTY LINES WERE CALCULATED, AND USED TO DETERMINE THE POSITION OF THE TRUE PROPERTY LINES. THE TRUE LINES WERE MARKED WITH RED PAINTED BLAZES. SIX FOOT ALUMINUM FENCE POSTS WERE SET AS SHOWN ON THE ACCOMPANYING PLAT, WITHIN 1 FOOT OF THE TRUE LINE. THE POSTS WERE REFERENCED BY A BEARING AND DISTANCE TO A NEARBY TREE. A YELLOW ALUMINUM SIGN MARKED "INTERNATIONAL PAPER-BOUNDARY" WITH THE BEARING AND DISTANCE FROM THE SIGN TO THE POST WAS NAILED LOW ON THE SAID TREE. A DECAL WAS PLACED ON THE POST WITH THE PRINTED FIRST LETTER OF THE CARDINAL DIRECTION AND

DISTANCE (ROUNDED TO THE NEAREST FOOT) TO THE NEAREST CORNER MONUMENT. A FLUORESCENT ORANGE MAGNETIC MARKER WAS BURIED APPROXIMATELY 12" BELOW THE GROUND AND ALONGSIDE OF EACH POST. MAGNETIC MARKERS WERE ALSO BURIED AT RANDOM POINTS ALONG THE TRUE LINE AND REFERENCED AS PREVIOUSLY DESCRIBED. AN ALUMINUM FENCE POST AND A BURIED MAGNETIC MARKER WAS PLACED BY EACH MONUMENT.

REGISTERED
PROFESSIONAL
LAND SURVEYOR

Richard J. Hintz

OREGON
MAY 18, 1980
RICHARD J. HINTZ
497

RICHARD J. HINTZ
1890 N. 14th ST.
COOS BAY, OREGON