

BOUNDARY LINE ADJUSTMENT SURVEY
IN THE NW 1/4 SEC. II, T.27S., R.6W., W.M.

COUNTY SURVEYORS FILE DATA
DO NOT REMOVE FROM OFFICE

JUNE 1987

SCALE 1" = 50'

FOR: RDJ INC.
 2631 N.W. KLINE ST.
 ROSEBURG, OR 97470

BY: BAUGHMAN TECHNICAL SERVICE INC.
 433 S.E. MAIN STREET
 ROSEBURG, OREGON
 PHONE 673-0966

FILED

JUL 7 1987 TF

COUNTY SURVEYOR
 DOUGLAS COUNTY, ORE.

REGISTERED
 PROFESSIONAL
 LAND SURVEYOR

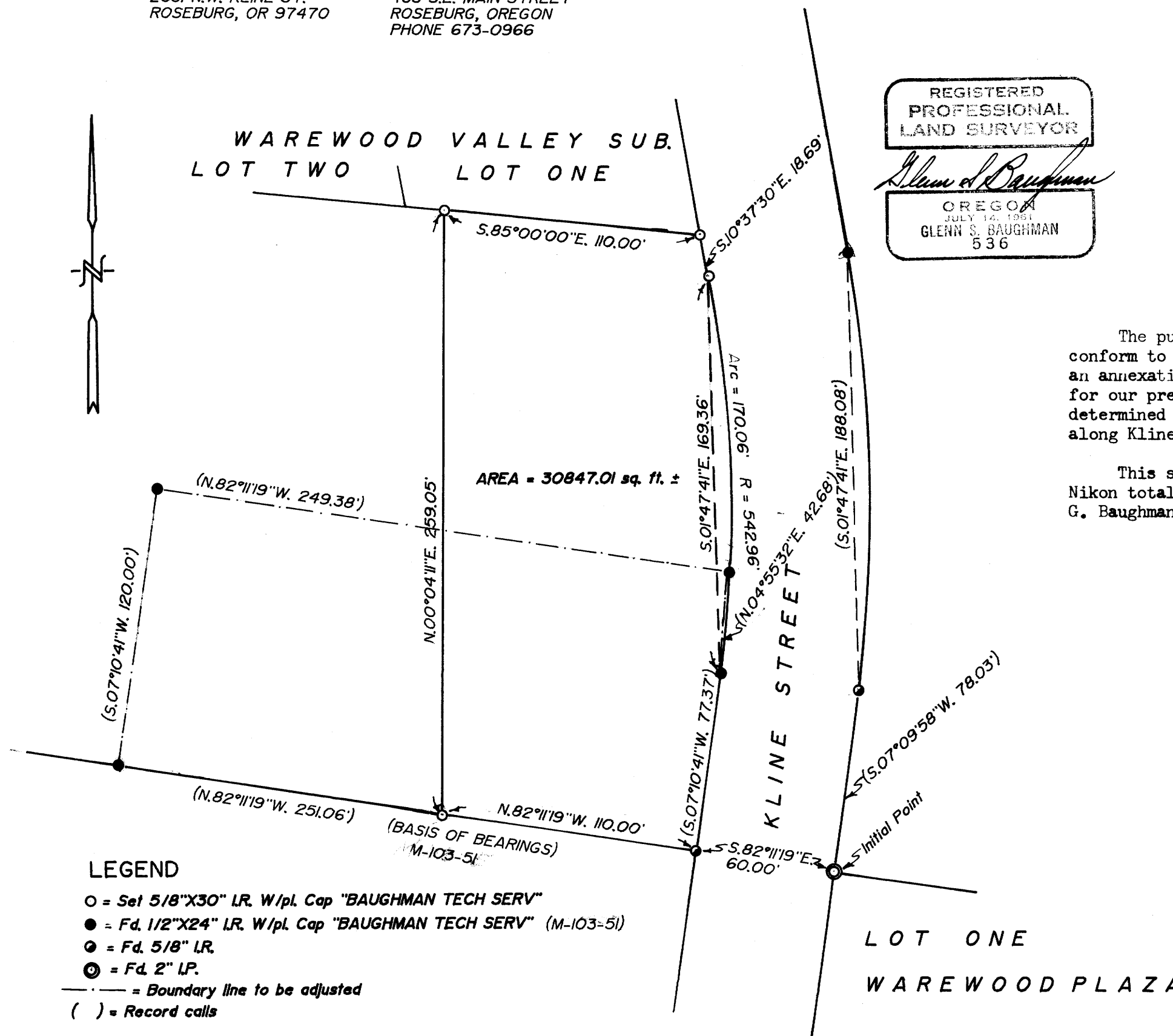
Glenn S. Baughman

OREGON
 JULY 14, 1981
 GLENN S. BAUGHMAN
 536

NARRATIVE

The purpose of this survey was to adjust a parcel created in M-103-51 to conform to the wishes of the City of Roseburg Planning Commission concerning an annexation. We used the previous survey M-103-51 as the basis and control for our present survey. The South line of Warewood Valley Subdivision was determined by turning record bearing from a point established at call distance along Kline St.

This survey was performed by K. DeGroot and M. Fromdahl using a NTD-4 Nikon total station. The calculations and drafting was accomplished by G. Baughman.



MAP FILE M104-35

MAP FILE M104-35