

FILED
JUN 30 1987
COUNTY SURVEYOR
DOUGLAS COUNTY, ORE
TF

SURVEY IN
SECTION 27, T.22S. R.12W. W.M.
FOR
DOUGLAS COUNTY, MOORE OREGON

AND
MENASHA CORPORATION

DATE: JUNE 11, 1987

SURVEY BY
MARK HOYE
MENASHA CORPORATION
P.O. BOX 588
NORTH BEND OR. 97459



BASIS OF BEARING IS A SURVEY
BY DAVID KLAUSMAN IN 7/26/85
SCALE: 1"=400'

LEGEND

- ⊙ CORNERS FOUND
- CORNERS SET, STAMPED L.S. 2098
- CORNERS CALCULATED
- LINES TRAVERSED
- LINES BLAZED & PAINTED
- - - LINES PROJECTED

NARRATIVE

THIS SURVEY WAS CONDUCTED TO LOCATE AND MARK THE LINES BETWEEN DOUGLAS COUNTY AND BOTH MOORE OREGON AND MENASHA CORPORATION IN SECTION 27, T.22S. R.12W. W.M. THIS WAS DONE BY A CONTINUATION OF A SURVEY BY DAVID KLAUSMAN FOR MENASHA CORPORATION IN 7/26/85. ALL CORNERS SET, WERE ESTABLISHED IN ACCORDANCE WITH THE BUREAU OF LAND MANAGEMENT'S MANUAL OF SURVEYING INSTRUCTIONS 1973. THIS SURVEY WAS COMPLETED WITH AN ERROR OF CLOSURE OF 1 IN 8705. INSTRUMENTS USED WERE A PENTAX 10-D TOTAL STATION FOR TRAVERSE WORK, AND HANDCOMPASS AND STEEL TAPE TO ESTABLISH BEARING TREES.

FD CEDAR SNAG FOR ORIGINAL 1/4
42" FIR STUMP, N74°E, 10.4', SCRIBED & TAGGED (ORIG)
2 1/2" WITNESS PIPE, S87°12'06"E, 21.04' FROM WHICH A
15" FIR, N87 1/2"E, 20.2', SCRIBED & TAGGED
60" FIR, N 1/2°E, 43.3, SCRIBED & TAGGED

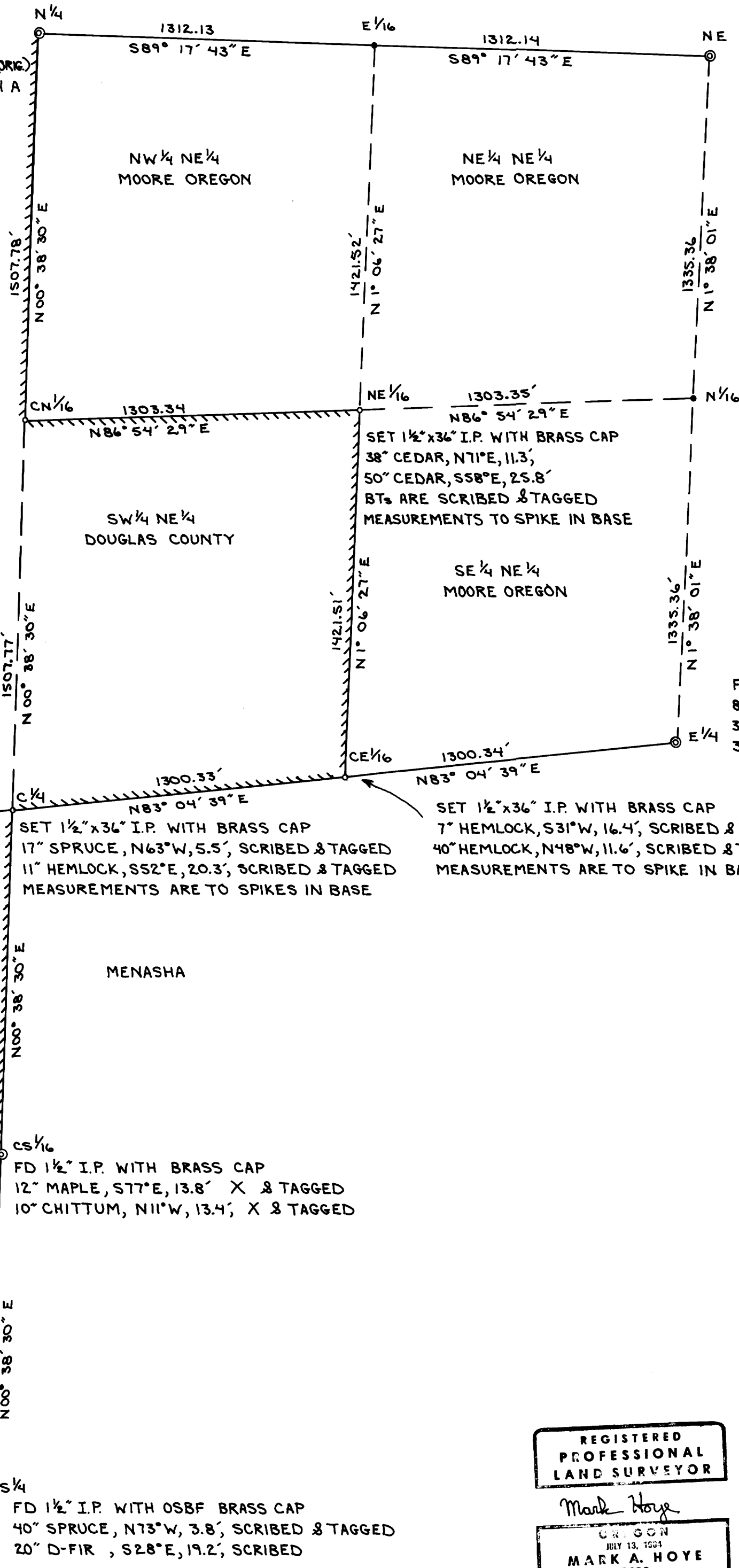
FD. 3" BCIP IN FELL & BUCKED TIMBER
67" CEDAR STUMP, N36°E, 30.3', TAGGED (ORIG)
ALDER BTs CUT, SCRIBED SANDSTONE BURIED

SET 1 1/2" x 3/8" I.P. WITH BRASS CAP
SPIKE IN SANDSTONE, SCRIBED 1/4 B.O., BEARS
S23°W, 2.5', TAG IN WINDTHROW ABOVE
14" SPRUCE, S89°E, 31.7', SCRIBED & TAGGED
MEASUREMENT TO SPIKE IN BASE

SET 1 1/2" x 3/8" I.P. WITH BRASS CAP
38" CEDAR, N71°E, 11.3',
50" CEDAR, S58°E, 25.8'
BTs ARE SCRIBED & TAGGED
MEASUREMENTS TO SPIKE IN BASE

FD 1 1/2" I.P. WITH BRASS CAP, 2" I.P. ALONGSIDE
16" ALDER, N42°W, 13.3', SCRIBED & TAGGED
22" ALDER, N85°E, 20.4', SCRIBED & TAGGED
15" ALDER, S70°W, 17.3', SCRIBED & TAGGED
20" ALDER, S71°E, 45.6', SCRIBED & TAGGED

FD. 1 1/2" I.P. WITH OSBF BRASS CAP
8" MYRTLE, N11°E, 14.52', SCRIBED & TAGGED
30" RED CEDAR, S62°E, 39.6', SCRIBED & TAGGED
32" MYRTLE, S70W, 51.9', SCRIBED & TAGGED



DOUGLAS COUNTY

DOUGLAS COUNTY

DOUGLAS COUNTY

MENASHA

REGISTERED
PROFESSIONAL
LAND SURVEYOR
Mark Hoyer
OREGON
JULY 13, 1984
MARK A. HOYE
2098

MAP FILE N1224-31

MAP FILE N1224-31