

1/2"X60" REBAR LOCATION AND REFERENCES

STA	DIRECTION	DISTANCE TO S.C. 31 & 36	REFERENCE
STANDARD SECTION CORNER 31 & 36			
36-15	EAST	272'	26" FIR, S53°W, 4.9'
REBAR	EAST	530'	72" FIR, S64°W, 10.2'
36-16	EAST	795'	66" FIR, S32°E, 5.8'
36-17	EAST	1091'	10" FIR, N17°E, 20.0'
36-18	EAST	1384'	20" FIR, S84°E, 16.0'
36-19	EAST	1429'	26" FIR, N60°W, 7.6'
36-20	EAST	1652'	14" FIR, S34°E, 12.8'
36-20A	EAST	1855'	
1/4 CORNER 36 ONLY			



1/4 CORNER 36 ONLY

SET: 5/8"X30"ALUMINUM ROD AND CAP

18" FIR, N 4°E, 38.1' - SCRIBED
1/4 S36 BT

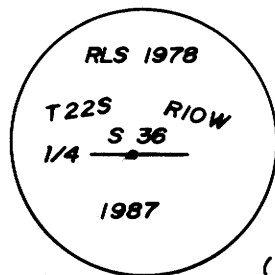
18" FIR, N 80°E, 38.5' - SCRIBED
1/4 S36 BT

NOTE: DISTANCES TO 7" SPIKE IN SIDE AND CENTER, BEARINGS MAGNETIC VAR. 20°

STANDARD SECTION CORNER 35 & 36

FND: OREGON STATE BOARD OF FORESTRY
BRASS CAP "1958"

- 33" HEMLOCK, N44°E, 9.0' - OSBF
- 60" FIR STUMP, S 75°W, 76.0 - 1894 GLO
- 54" FIR STUMP, N 75°W, 34.5' - 1894 GLO
- 16" HEMLOCK, N 66°W, 33.0' - 1970 BLM

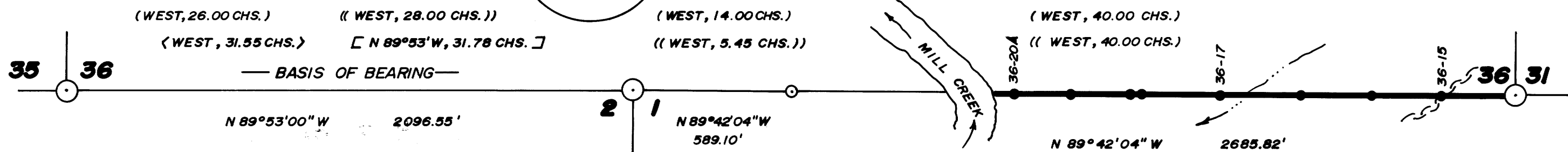


— NARRATIVE —

THIS SURVEY WAS MADE IN DECEMBER, 1986 AND APRIL, 1987 BY DANIEL W. BAKER OF PEEL BAKER LAND SURVEYING, INC., 1262 LAWRENCE ST., EUGENE, OREGON. THE PURPOSE OF THIS SURVEY WAS TO LOCATE AND MARK THE SOUTH LINE OF SECTION 36, T22S, R10W, W.M., FROM THE STANDARD SECTION CORNER OF SECTIONS 31 & 36, T22S, R10W, TO THE EAST BANK OF MILL CREEK AND SET THE SOUTH 1/4 CORNER OF SECTION 36 FOR INTERNATIONAL PAPER COMPANY. BEARINGS WERE BASED ON A 1970 BLM SURVEY FROM THE CLOSING CORNER OF SECTIONS 1 & 2, T23S, R10W AND THE STANDARD CORNER OF SECTIONS 35 & 36, T22S, R10W. RANDOM TRANSIT TRAVERSES, WITH A MINIMUM ERROR OF CLOSURE OF 1/25,000', WERE RUN BETWEEN FOUND CORNERS FOR CONTROL. OFFSETS FROM THE RANDOM TRAVERSE LINE TO THE TRUE PROPERTY LINE WERE CALCULATED AND USED TO DETERMINE THE POSITION OF THE TRUE LINE. THE TRUE PROPERTY LINE WAS MARKED IN THE FIELD BY BLAZING TREES (BLAZES PAINTED RED) ON BOTH SIDES OF THE TRUE LINE AND BY 1/2"X60" REBARS, SET AT RANDOM INTERVALS, APPROXIMATELY (±1 FOOT) ON THE TRUE LINE. A 4"X8" YELLOW SIGN, MARKED "PROPERTY LINE - INTERNATIONAL PAPER CO. - GARDINER, OREGON" WAS ATTACHED TO EACH REBAR AND A ALUMINUM CAP, MARKED WITH BEARING AND DISTANCE TO THE STANDARD CORNER 31 & 36, WAS PLACED ON TOP OF EACH REBAR. REBARS WERE REFERENCED BY A BEARING AND DISTANCE TIE TO A NEARBY TREE. A REFERENCE SIGN, MARKED WITH A BEARING AND DISTANCE FROM THE SIGN TO THE REBAR WAS NAILED LOW ON THE TREE. A WHITE MAGNETIC LOCATOR WAS BURIED APPROXIMATELY ONE FOOT DEEP AND 1/2 FOOT DISTANCE FROM (ON LINE) EACH REBAR THE SOUTHWEST AND SOUTHEAST STANDARD SECTION CORNERS OF SECTION 36, T22S, R10W, AND THE CLOSING SECTION CORNER OF SECTIONS 1 & 2, T23S, R10W, WERE TIED AND USED FOR CONTROL. THE SOUTH 1/4 CORNER OF SECTION 36 WAS NOT FOUND AND WAS SET AT MIDPOINT (LONGITUDINALLY), USING THE SOUTHWEST AND SOUTHEAST SECTION CORNERS OF SECTION 36 AND ON LINE BETWEEN THE SOUTHEAST SECTION CORNER OF SECTION 36 AND THE CLOSING SECTION CORNER OF SECTIONS 1 & 2. THIS IS FROM A BLM OPINION DATED FEBRUARY 6, 1987. A 5/8"X30" ALUMINUM ROD WITH A MAGNETIC BASE WAS SET AT THE SOUTH 1/4 CORNER AND MARKED AS PER THE "1973 BLM MANUAL OF INSTRUCTIONS" AND ALSO MARKED "RLS 1978."

FILED
MAY 29 1987
COUNTY SURVEYOR
DOUGLAS COUNTY, ORE.

O.S. FILE NO. 63/50
 MAP 118 M104-19



CLOSING SECTION CORNER 1 & 2

FND: OREGON STATE BOARD OF FORESTRY
BRASS CAP "1957"

- 34" FIR, S 46 1/4°E, 20.0' - 1878 GLO (RECORD BEARING S 25°E)
- 20" FIR, S 47 1/2°W, 14.3' - OSBF
- 42" FIR, S 88°W, 31.6' - 1878 GLO (BARK SCRIBED)

STANDARD SECTION CORNER 31 & 36

FND: OREGON STATE BOARD OF FORESTRY BRASS CAP "1967" AND MOUND OF ROCKS

- 18" FIR, N 72 3/4°E, 24.7' - OSBF
- 30" FIR, N 22 3/4°W, 21.3' - OSBF

BASIS OF BEARING: 1970 BLM SURVEY (C.C. 1 & 2 TO S.C. 35 & 36)

SCALE: 1" = 400'

- CORNERS FOUND
- ⊙ CORNER SET
- 1/2"X60" REBAR
- BLAZED PROPERTY LINE
- () 1878 GLO - BYARS
- (()) 1894 GLO - TODD
- < > 1906 GLO - WALKER
- [] 1970 BLM SURVEY

REGISTERED
PROFESSIONAL
LAND SURVEYOR

Daniel W. Baker
OREGON
JULY 16, 1982
DANIEL W. BAKER
1978

**SURVEY OF
SOUTH LINE - SECTION 36, T22S, R10W, W.M.
DOUGLAS COUNTY, OREGON**

FOR
INTERNATIONAL PAPER COMPANY

BY
PEEL BAKER LAND SURVEYING, INC.
1262 LAWRENCE ST., SUITE 4
EUGENE, OREGON 97401

APRIL 10, 1987

COUNTY SURVEYORS FILE DATA
DO NOT REMOVE FROM OFFICE

O.S. FILE NO. 63/50
 MAP 118 M104-19