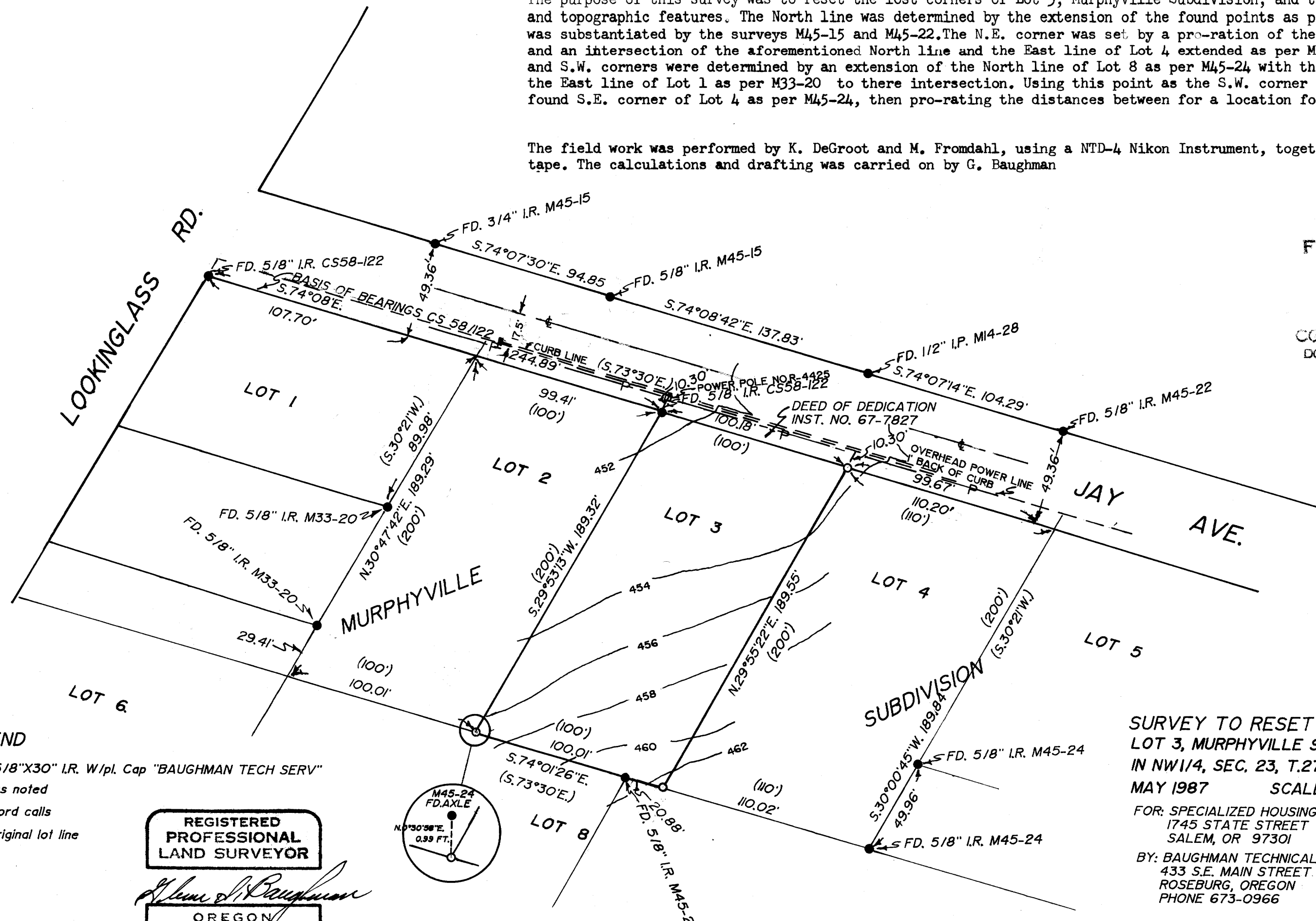


SURVEY NARRATIVE

The purpose of this survey was to reset the lost corners of Lot 3, Murphyville Subdivision, and to gather elevations and topographic features. The North line was determined by the extension of the found points as per CS 58/122 and was substantiated by the surveys M45-15 and M45-22. The N.E. corner was set by a pro-ration of the found N.W. corner and an intersection of the aforementioned North line and the East line of Lot 4 extended as per M45-24. The S.E. and S.W. corners were determined by an extension of the North line of Lot 8 as per M45-24 with the extension of the East line of Lot 1 as per M33-20 to their intersection. Using this point as the S.W. corner of Lot 2 and the found S.E. corner of Lot 4 as per M45-24, then pro-rating the distances between for a location for the said corners.

The field work was performed by K. DeGroot and M. Fromdahl, using a NTD-4 Nikon Instrument, together with a steel tape. The calculations and drafting was carried on by G. Baughman



FILED  
 vlr  
 MAY 29 1987 TF  
 COUNTY SURVEYOR  
 DOUGLAS COUNTY, ORE.  
 TF

LEGEND

- Set 5/8" X 30" I.R. W/pl. Cap "BAUGHMAN TECH SERV"
- Fd. as noted
- ( ) Record calls
- Original lot line

REGISTERED  
 PROFESSIONAL  
 LAND SURVEYOR

*Glenn S. Baughman*

OREGON  
 JULY 14, 1964  
 GLENN S. BAUGHMAN  
 536

SURVEY TO RESET CORNERS  
 LOT 3, MURPHYVILLE SUBDIVISION  
 IN NW1/4, SEC. 23, T.27S., R.6W., W.M.  
 MAY 1987 SCALE 1" = 50'

FOR: SPECIALIZED HOUSING INC.  
 1745 STATE STREET  
 SALEM, OR 97301

BY: BAUGHMAN TECHNICAL SERVICE INC.  
 433 S.E. MAIN STREET  
 ROSEBURG, OREGON  
 PHONE 673-0966

COUNTY SURVEYORS FILE DATA  
 DO NOT REMOVE FROM OFFICE

NOTE:  
 ALL ELEVATIONS ARE BASED ON USC&GS DATUM

MAP FILE M104-18

MAP FILE M104-18