

COUNTY SURVEYORS FILE DATA  
 DO NOT REMOVE FROM OFFICE  
 RECORD OF SURVEY

FILED

*TF*

MAY 28 1987 TF

COUNTY SURVEYOR  
 DOUGLAS COUNTY, ORE.  
 TF

LOTS 3 AND 4, BLOCK 41, OAKLAND RAILROAD ADDITION  
 N.W. 1/4, SEC. 4, T. 25S., R. 5 W., W. M.  
 CITY OF OAKLAND  
 DOUGLAS COUNTY, OREGON

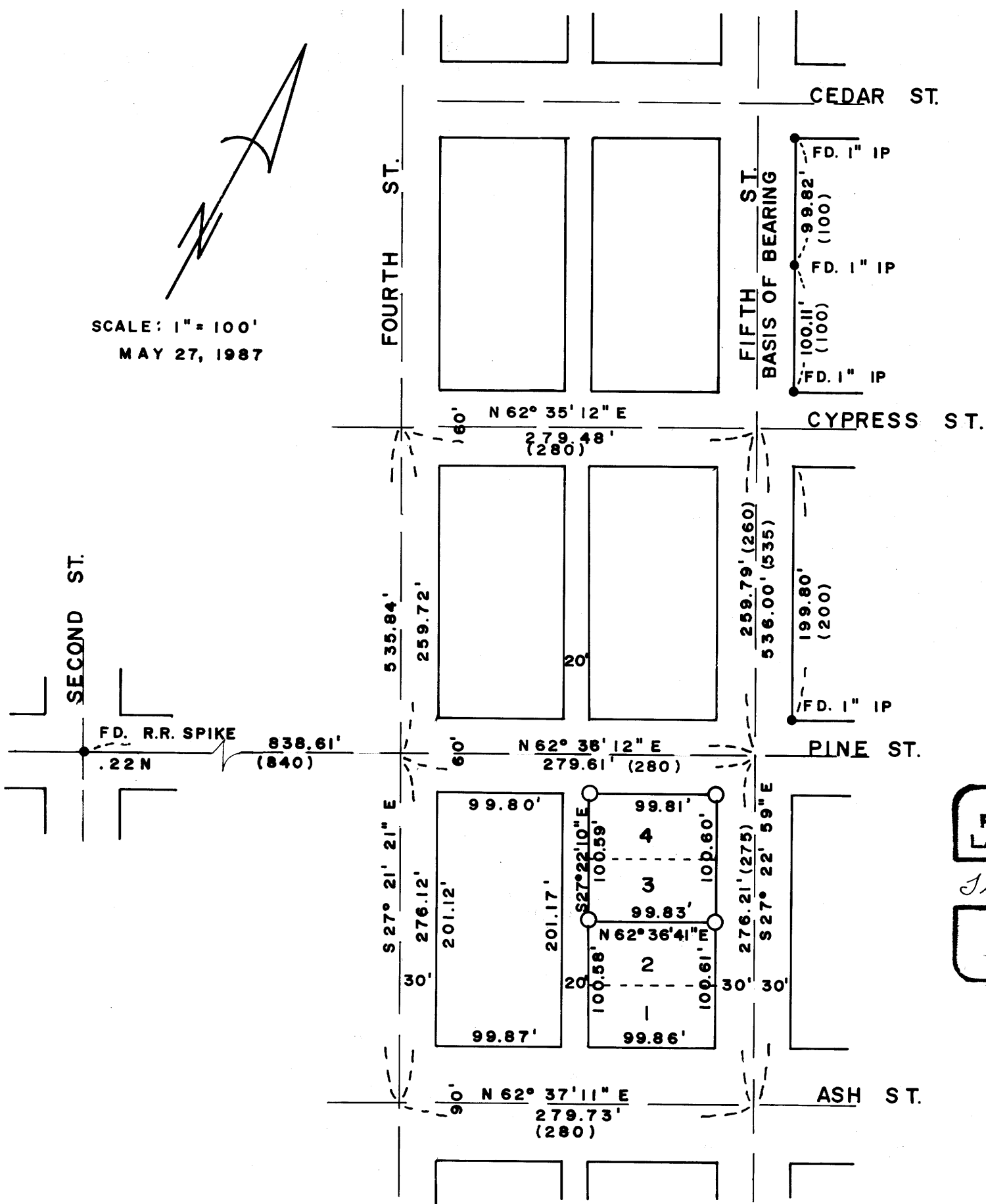
FOR  
 LANCE SHORT

NARRATIVE:

THIS SURVEY WAS PERFORMED TO ESTABLISH THE BOUNDARIES OF LOTS 3 & 4. CORNER LOCATIONS WERE COMPUTED FROM FOUND MONUMENTS AS INDICATED, USING DISTANCES AND BEARINGS FROM RM 2-59. A 1" IRON PIPE AT THE CORNER OF 5th AND PINE ST. CONTROLLED THE DIVISION BETWEEN BLOCK 41 AND 42.

SCHERNER SURVEYING  
 1346 S.W. MEDFORD AVE.  
 ROSEBURG, OR. 97470  
 672-3766

SCALE: 1" = 100'  
 MAY 27, 1987



REGISTERED  
 PROFESSIONAL  
 LAND SURVEYOR

*Thomas D. Scherner*

OREGON  
 JULY 14, 1978  
 THOMAS D. SCHERNER  
 1657

REFERENCE SURVEYS:

- RM 2-59
- M 99-64
- M 22-44
- PLAT VOL. I PAGE 30

LEGEND:

- MONUMENTS FOUND AS INDICATED
- SET 5/8" X 30" IRON ROD WITH PLASTIC CAP MARKED PLS 1657
- ( ) INDICATES RECORD DISTANCES