

Property Survey in SE 1/4 NE 1/4 Section 36, T 25 S, R 8 W, W. M., Oregon

For Roseburg Resources Company

Scale: 1" = 100'

April 20, 1987

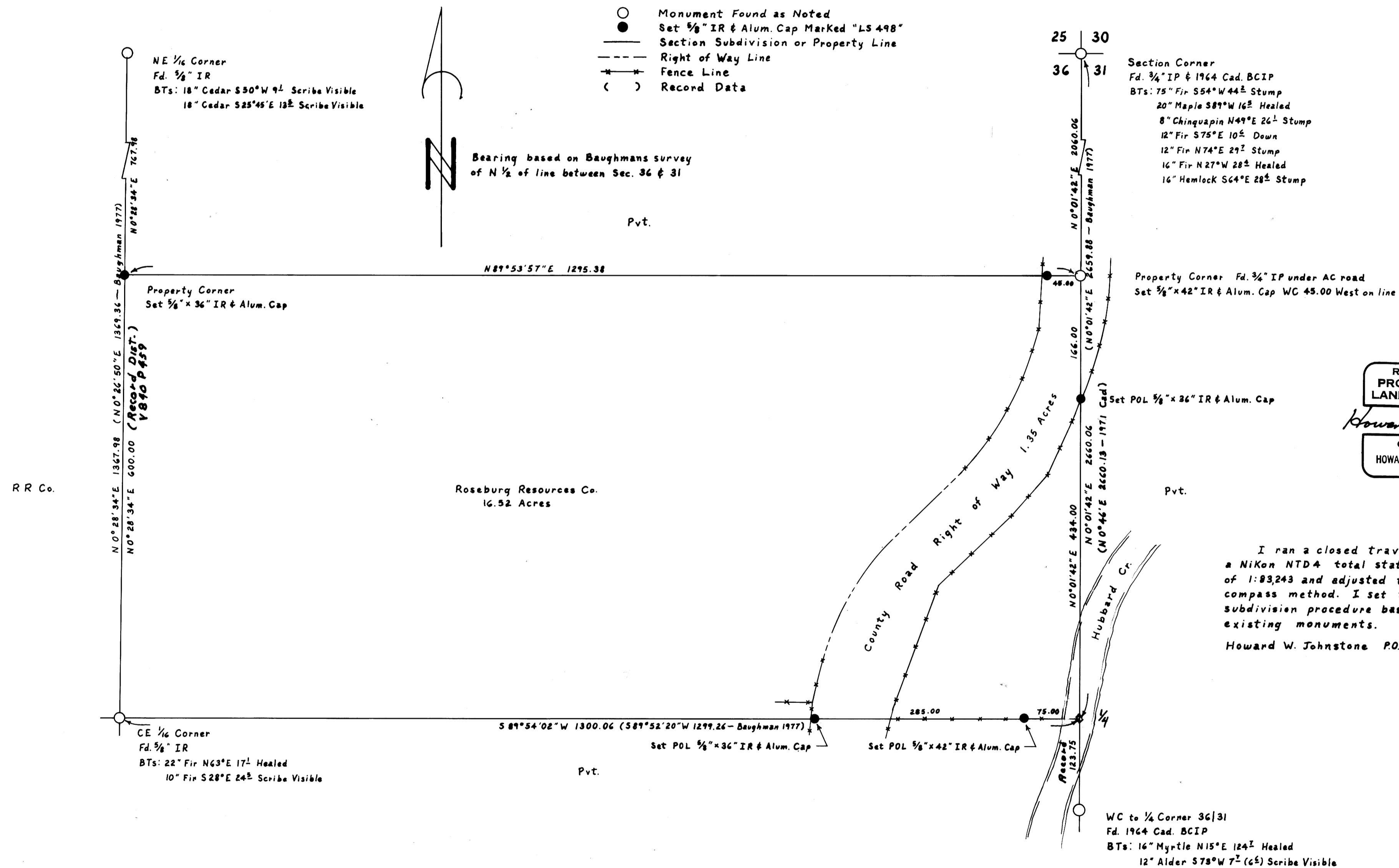
FILED

MAY 27 1987 TF

COUNTY SURVEYOR
DOUGLAS COUNTY, ORE.

TF

MAP FILE M127-15



REGISTERED
PROFESSIONAL
LAND SURVEYOR
Howard W. Johnstone
OREGON
MAY 13, 1980
HOWARD W. JOHNSTONE
498

I ran a closed traverse in Section 36 using a Nikon NTD4 total station. I achieved a precision of 1:83,243 and adjusted the traverse by the compass method. I set the corners by standard subdivision procedure based on the location of the existing monuments.
Howard W. Johnstone P.O. Box 1088 Roseburg, Oregon

MAP FILE M127-15