

COUNTY SURVEYORS FILE DATA  
DO NOT REMOVE FROM OFFICE

# SURVEY IN THE SW 1/4 OF SECTION 22 T.29S., R.7W., W.M. DOUGLAS COUNTY, OREGON

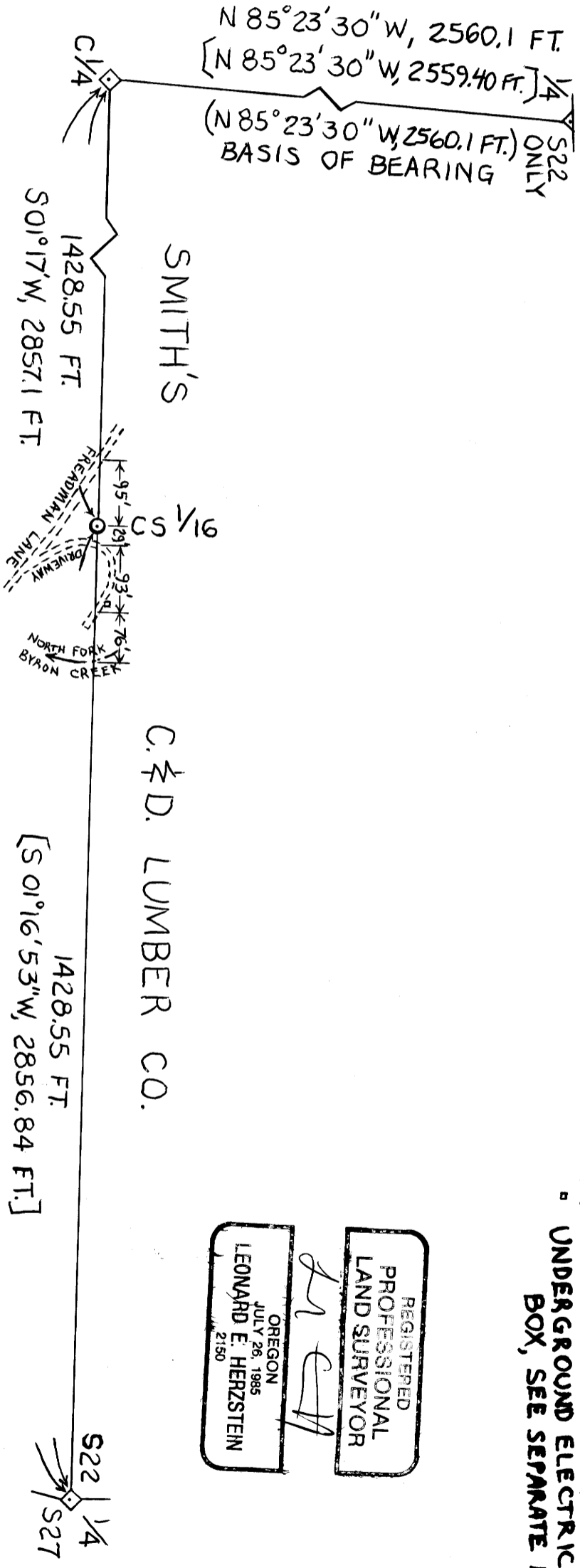
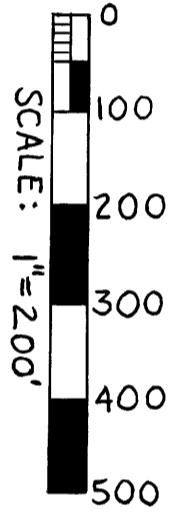
FOR JOHN & SUANNE LOVENDAHL

APRIL 4, 1987

FILED  
MAY 22 1987  
COUNTY SURVEYOR  
DOUGLAS COUNTY, OREGON

## LEGEND

- ◇ CORNER FOUND, SEE SEPARATE NARRATIVE
- CORNER SET, SEE SEPARATE NARRATIVE
- GRAVELED ROAD
- - - - - THREAD OF CREEK
- ( ) RECORD PER M103-58, 1987
- [ ] RECORD PER M97-54, 1984
- UNDERGROUND ELECTRIC SERVICE BOX, SEE SEPARATE NARRATIVE



REGISTERED  
PROFESSIONAL  
LAND SURVEYOR  
*LEH*  
OREGON  
JULY 26, 1985  
LEONARD E. HERZSTEIN  
2150

C.S. File No. 63/56

MAP FILE M104-13

MAP FILE M104-13

C.S. File No. 63/56

M 104-13

FILED

JK

Survey Narrative

MAY 22 1987 TF

COUNTY SURVEYOR  
DOUGLAS COUNTY, ORE.

TF

This survey was made for John and Suanne Lovendahl in the SW $\frac{1}{4}$  of Section 22, Township 29 South, Range 7 West, Willamette Meridian, Douglas County, Oregon. The accompanying plat correctly represents a survey I performed from November 9, 1985 through April 4, 1987. The purpose of the survey was to locate and set the center south sixteenth corner of Section 22.

I ran a control traverse using a Red 2 EDM and a Topcon TL-6DE theodolite. The basis of bearing was the retraced line from map file no. M103-58. I obtained a closure of 1 in 23,100. No adjustment was made to the traverse. The center south sixteenth corner was set at the midpoint between the found corners as per the U. S. Manual of Survey Instructions [ORS 209-070(4)]. The corner was set out using a Lietz BT-20 transit and a 200 foot steel chain.

All bearing trees (BTs) were measured to the center of the rootcrown. The bearings were determined with the transit by turning angles from the control traverse and using values to the nearest 15 minutes. BT sizes are the diameter at breast height.

The found underground electric service box measures 20" x 24" and bears S 04\* 05'E, 112.3 ft. from the center south sixteenth corner.

Corners Found

$\frac{1}{4}$  S22 & S27: I found a 1 5/8" outside diameter iron pipe, firmly set, projecting 4" above the ground (renewal #97).

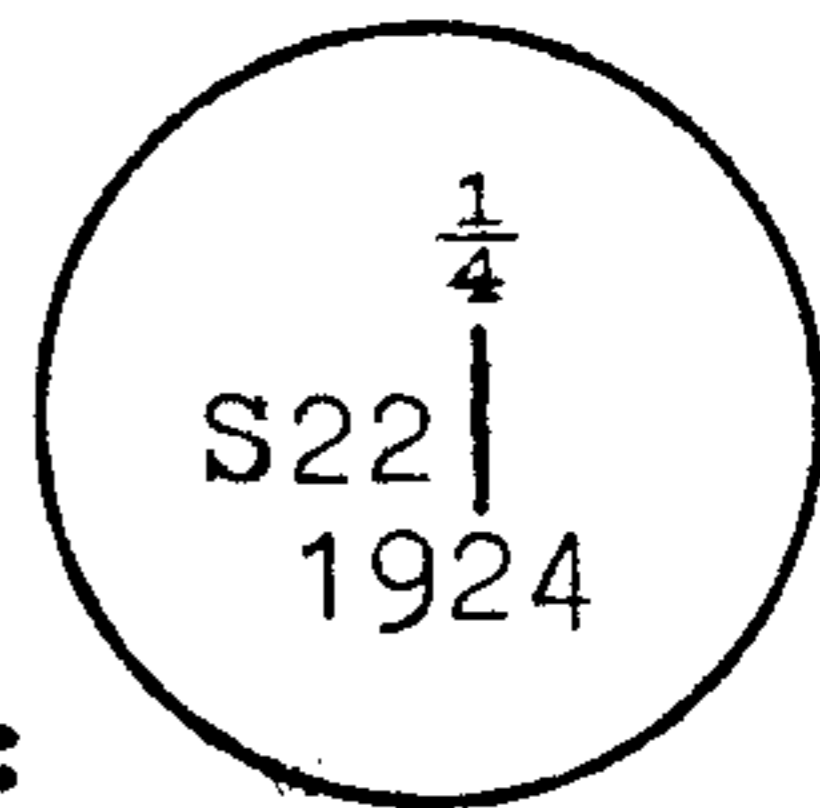
From which the remains of the only original BT are:  
A 20" Douglas fir stob, S 44\* 45'W, 19.2 ft. (18.6 ft. to the face) (rec. S 45\*W, 28 lks. per Ford, 1854), with scribe marks " $\frac{1}{4}$  2" visible on a previously opened blaze ("S" is scribed backwards).

And the BTs marked by Marvin Ramsey, L S 404, in 1959 (ren. #97):

An 8" white fir, S 68\* 45'W, 19.6 ft. (rec. S68 $\frac{1}{2}$ \*W, 29 lks. per ren. #97), with scribe marks "S 404 B" visible on a single blaze.

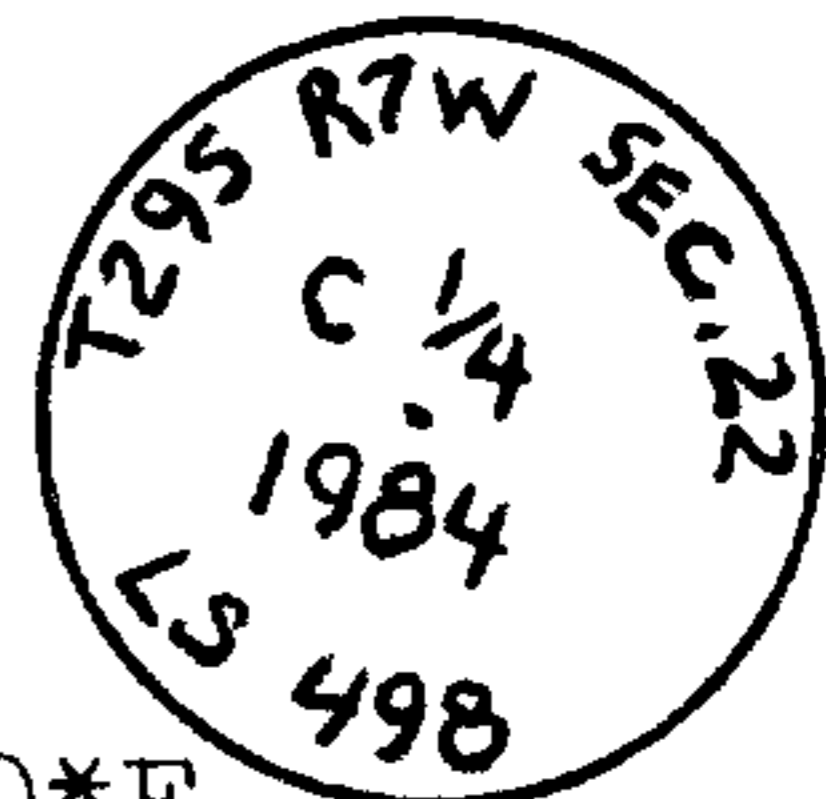
A 24" Douglas fir, N 55\* 45'W, 19.9 ft. (rec. N57\*W, 30 lks. per ren. #97), with a healed single blaze.

1/4 S22 only: I found a 1" iron pipe, firmly set, projecting 6" above the ground, with a 2 1/2" brass cap attached, set by the G.L.O. in 1924.



From which the BTs marked by James Byron, Deputy County Surveyor, in 1962 (ren. #156):  
A 22" Douglas fir, S 01\* 45'E, 27.7 ft. (rec. South, 44 lks. per B.L.M., 1981), with a healed double blaze.  
A 15" Douglas fir, N 71\* 45'W, 26.6 ft. (rec. N 72\*W, 41 lks. per B.L.M., 1981), with a healed double blaze.

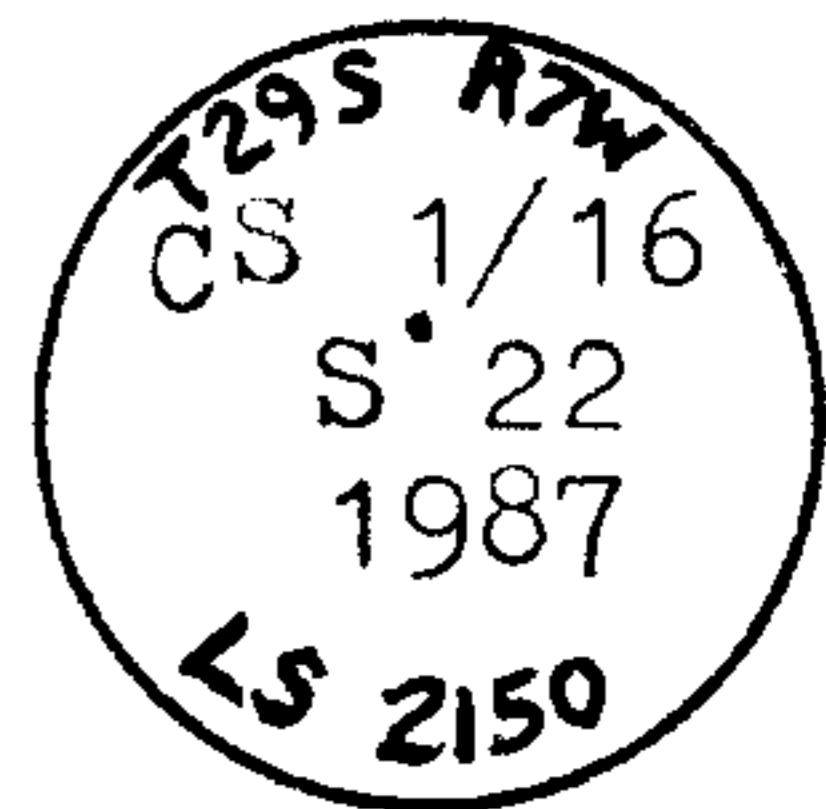
C 1/4 S22: I found a 5/8" diameter rebar, firmly set, projecting 18" above the ground, with a 2" aluminum cap attached, set by Howard Johnstone, L S 498, in 1984 (M97-54).



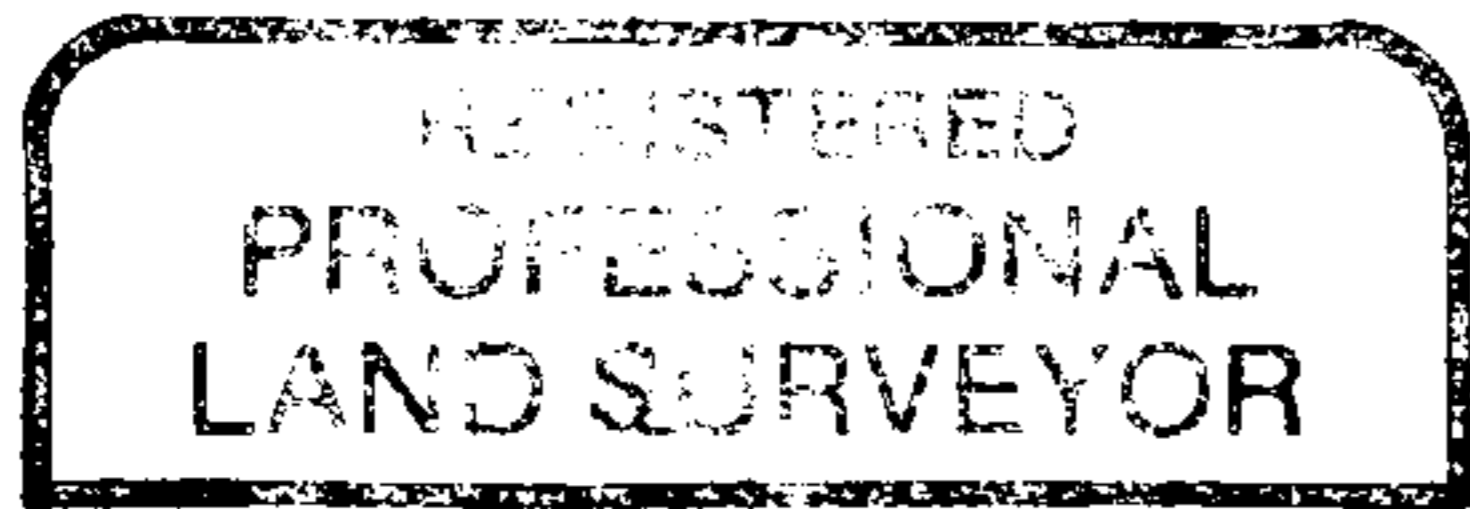
From which the BTs marked by Johnstone in 1984:  
A 3" Douglas fir, N 51\* 45'E, 18.5 ft. (rec. N 50\*E, 18.6 ft. per M97-54), with scribe marks "X C 1/4 BT" visible on a single blaze.  
A 5" incense cedar, S 66\* 45'E, 22.9 ft. (rec. S 68\*E, 23.1 ft. per M97-54), with scribe marks "C 1/4 BT" visible on a single blaze.  
Both BTs have a 3/4" brass washer, stamped "RLS 498", nailed flush to the face.

Corner Set

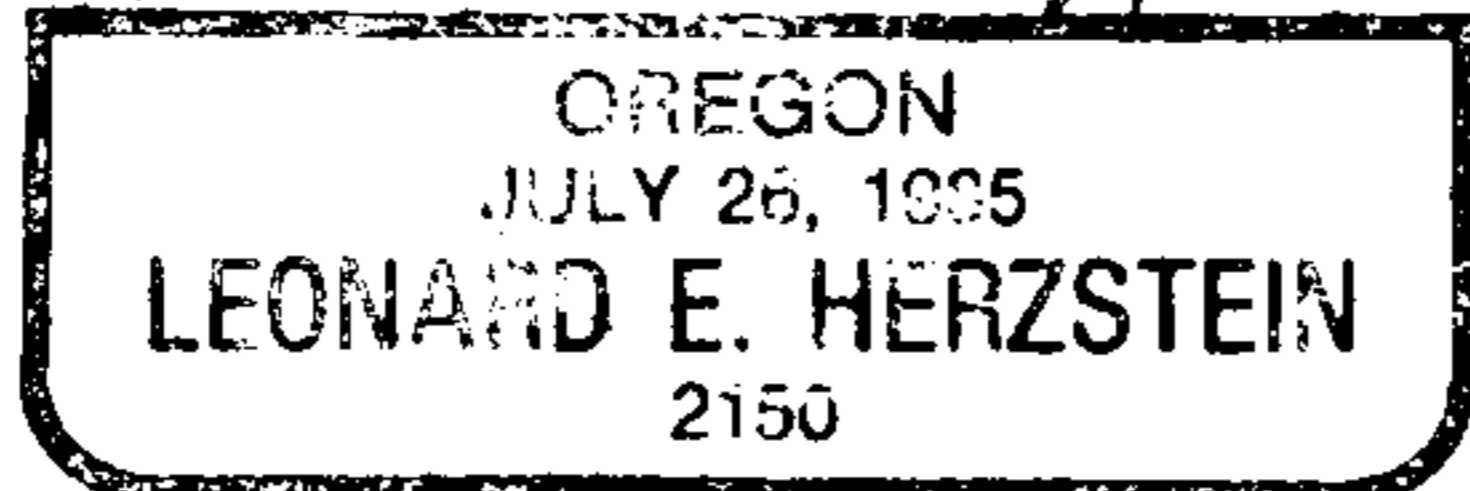
CS 1/16: I set a 5/8" diameter rebar, 23" long, driven 22" in the ground, with a 2" aluminum cap attached, stamped as shown:



From which I marked new BTs:  
A 12" Douglas fir, S 03\* 30'E, 10.9 ft., scribed "CS 1/16 BT" on a single blaze.  
A 10" incense cedar, N 04\* 30'W, 7.4 ft., scribed "CS 1/16 BT" on a single blaze.



*LEH*



FILED

*sh*

MAY 22 1987 TF

COUNTY SURVEYOR DOUGLAS COUNTY, ORE.

TF