

STATE HIGHWAY R/W MONUMENT
 FOUND: 1-1/2" ALUMINUM CAP ON REBAR
 PADDLE TYPE SIGN ON STEEL POST
 MKD. "S.H.R.W. L 72+07.74 LT. 510"

STATE HIGHWAY R/W MONUMENT
 FOUND: 1-1/2" ALUMINUM CAP ON REBAR
 PADDLE TYPE SIGN ON STEEL POST
 MKD. "S.H.R.W. L 105+00.00 LT. 600"

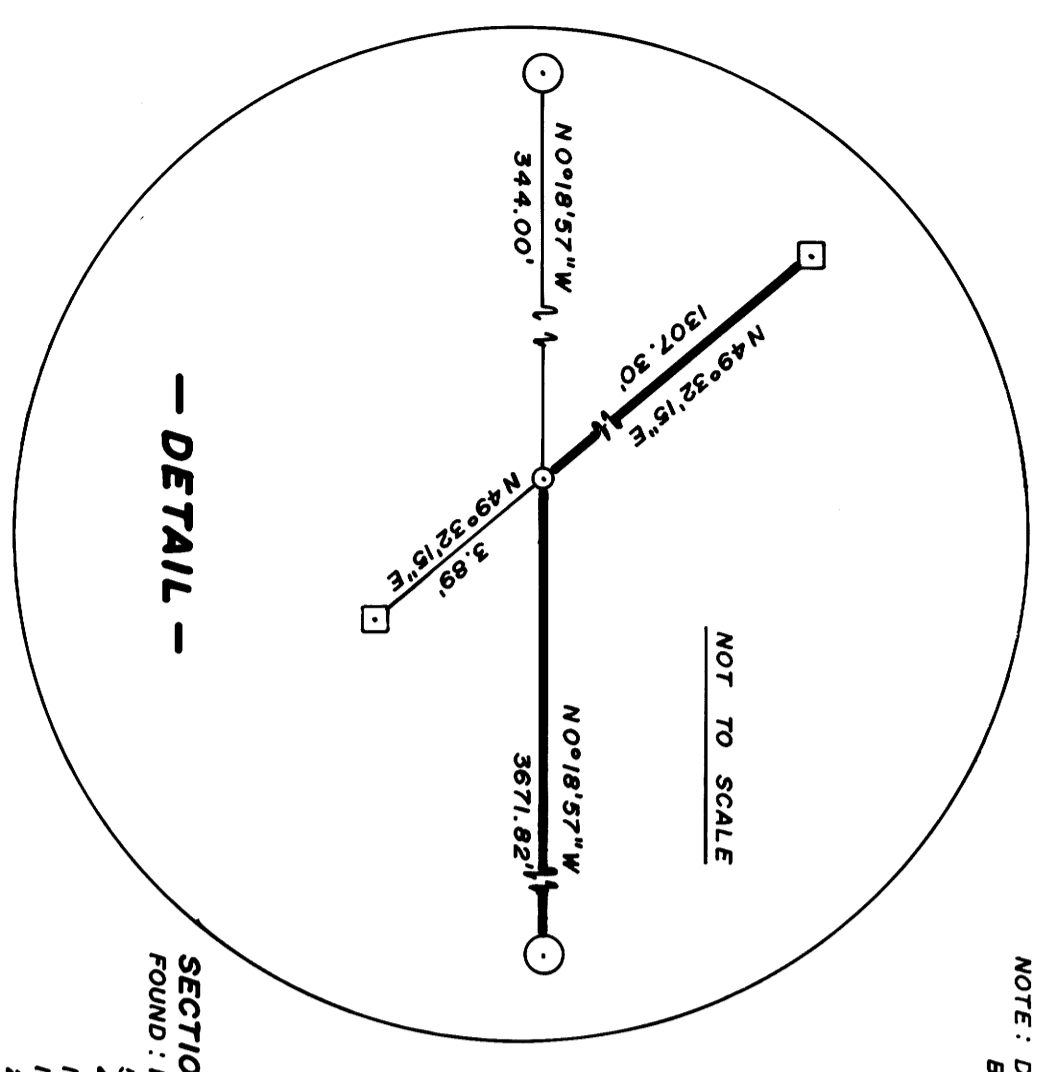
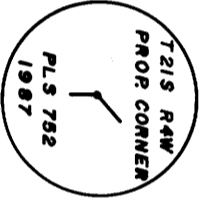
STATE HIGHWAY R/W MONUMENT
 FOUND: 1-1/2" ALUMINUM CAP ON REBAR
 PADDLE TYPE SIGN ON STEEL POST
 MKD. "S.H.R.W. L 118+26.82 LT. 550"

1/4 CORNER 16 & 21
 FOUND: 1-3/4" IRON PIPE (PIPE NOT VERTICAL,
 MEASURED TO TOP OF PIPE)

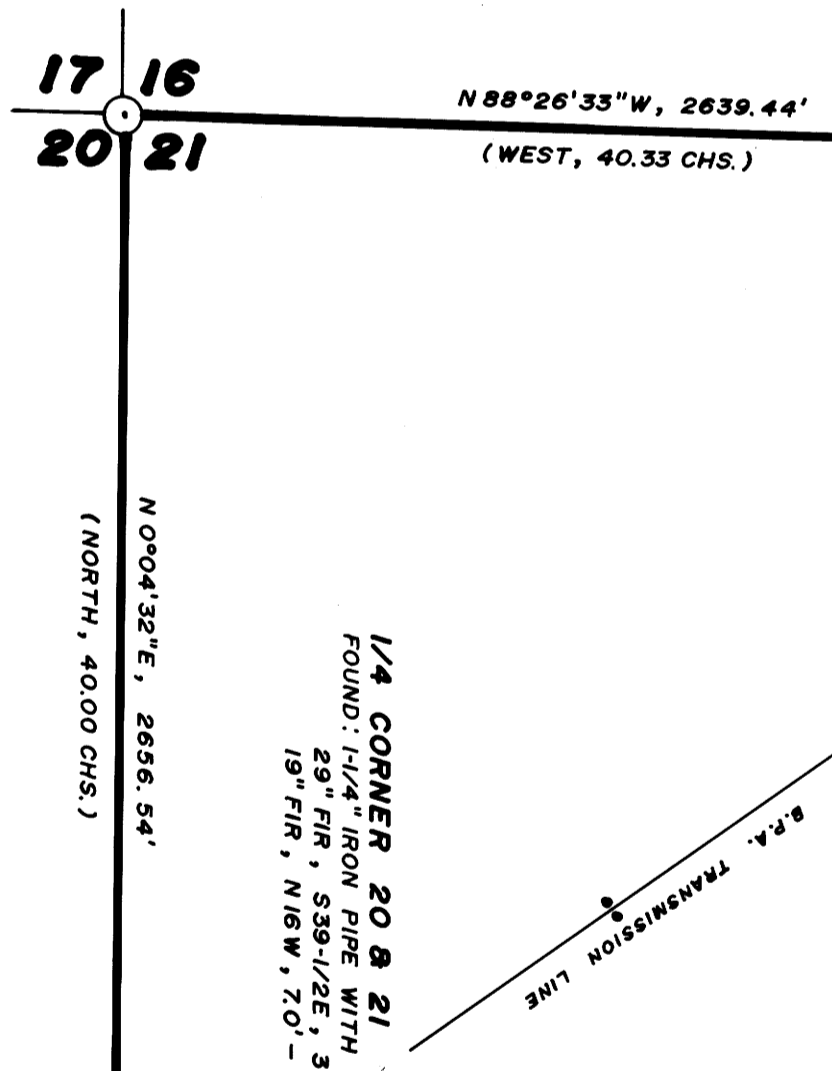
36" FIR STUMP, N 7-1/4 W, 26.3' - CENTER MEASURE - NO VISIBLE MARKS
 44" CEDAR, N 64-1/4 E, 32.2' - CENTER MEASURE - CLOSED FACE
 10" HEMLOCK, S 71-1/2 E, 8.2' - CENTER MEASURE - SCRIBE VISIBLE
 42" FIR STUMP, S 86-1/4 E, 50.3' - FACE MEASURE - VISIBLE BARK SCRIBE

CENTER-NORTH 1/16 SECTION 16
 FOUND: 1-3/4" (O.D.) IRON PIPE IN MOUND OF STONE
 (SEE 1949 SURVEY BY A.R. EVANS - FILE 179 DRAWER 43)
 15" INCENSE CEDAR, N 51 W, 21.5' - NO SIGN OF FACE OR
 OTHER VISIBLE MARKS
 FIR STUMP (APPROX. 26" DIAM.)
 REMAINS OF ROTTED BEARS S 21-1/2 E, 103.9'

PROPERTY CORNER
 SET: 2" X 4" IRON PIPE WITH BRASS CAP
 10" FIR, S 42 W, 25.0' - SCRIBED "PCBT"
 17" FIR, N 68 W, 18.7' - SCRIBED "PCBT"
 NOTE: DISTANCE TO "W" NAIL IN LOWER
 BLAZE, BEARING MAGNETIC - VAR. 20°



SECTION CORNER 16, 17, 20, 21
 FOUND: 1-1/4" IRON PIPE WITH DOUGLAS COUNTY BRASS CAP "1964"
 50" FIR, N 31-1/4 E, 57.6' - CLOSED FACE
 42" FIR, S 14-1/2 E, 20.4' - ORIGINAL B.T., OPENED TO VISIBLE SCRIBE
 16" FIR, S 6-1/2 E, 60.4' - CLOSED FACE
 10" FIR, S 42-1/2 W, 23.4' - CLOSED FACE
 22" FIR, N 94-3/4 W, 49.6' - CLOSED FACE



1/4 CORNER 20 & 21
 FOUND: 1-1/4" IRON PIPE WITH DOUGLAS COUNTY BRASS CAP "1964"
 29" FIR, S 39-1/2 E, 34.9' - CLOSED FACE
 19" FIR, N 16 W, 7.0' - CLOSED FACE

NARRATIVE

THIS SURVEY WAS MADE IN MARCH AND APRIL OF 1987 BY DONALD L. PEEL OF PEEL BAKER LAND SURVEYING INC., 1262 LAWRENCE ST. - SUITE 4, EUGENE, OREGON. THE PURPOSE OF THIS SURVEY WAS TO LOCATE AND MARK SOME OF THE PROPERTY LINES OF THE LAND OWNED BY WEYERHAEUSER COMPANY IN SECTIONS 16 AND 21, T21S, R4W, W.M. A WILD T1000 ELECTRONIC THEODOLITE AND DI 55 EDM. WERE USED TO PERFORM THIS SURVEY. CLOSED RANDOM TRANSIT TRAVERSES (WITH A MINIMUM ERROR OF CLOSURE OF 1/35,000) WERE RUN BETWEEN FOUND CORNERS FOR CONTROL. BEARINGS WERE BASED ON A SOLAR OBSERVATION. RANDOM TRANSIT TRAVERSES WERE THEN RUN AS CLOSE AS POSSIBLE TO THE COMPUTED TRUE PROPERTY LINE. OFFSETS FROM THE RANDOM LINE TO THE TRUE PROPERTY LINE WERE CALCULATED AND USED TO DETERMINE THE POSITION OF THE TRUE PROPERTY LINE. THE TRUE PROPERTY LINE WAS MARKED IN THE FIELD BY BLAZING TREES (BLAZES NOTCHED AND PAINTED RED) ON BOTH SIDES OF THE TRUE LINE. THE CENTER-NORTH 1/16 CORNER OF SECTION 16, AS ESTABLISHED IN 1891 BY WM. F. BRIGGS (VOL. 1, PAGE 184 COUNTY SURVEYORS RECORDS) AND REMONUMENTED IN A 1949 SURVEY BY A.R. EVANS (FILE 179 DRAWER 43 - RENEWAL NO. 15) WAS FOUND AND USED FOR CONTROL. ALTHOUGH THIS CORNER WAS NOT ESTABLISHED BY USING THE CORRECT PROCEDURE, IT HAS BEEN ACCEPTED AS THE TRUE PROPERTY CORNER BY INTERESTED PROPERTY OWNERS FOR NEARLY 100 YEARS. THEREFORE USED THIS CORNER TO CONTROL THE WESTERLY LINE OF THE WEYERHAEUSER PROPERTY IN SECTION 16. THE ONLY CORNER SET IN THIS SURVEY WAS SET AT THE POINT OF INTERSECTION OF A LINE BETWEEN 1/4 CORNER 16 & 21 AND THE ABOVE MENTIONED CENTER-NORTH 1/16 CORNER AND THE LINE BETWEEN STATE HIGHWAY RIGHT-OF-WAY MONUMENTS (350 FT. LEFT OF STA. 118+26.82 AND 600 FT. LEFT OF STA. 105+00.00).

REGISTERED
 PROFESSIONAL
 LAND SURVEYOR
 DONALD L. PEEL
 752

- BASIS OF BEARING: SOLAR OBSERVATION**
 SCALE: 1" = 500'
- CORNERS FOUND
 - CORNER SET THIS SURVEY
 - STATE HIGHWAY R/W MONUMENT
 - BLAZED PROPERTY LINE
 - B.R.A. TRANSMISSION LINE
 - () G.L.O. RECORD BEARING AND DISTANCE
 - [] RECORD BEARING AND DISTANCE A.R. EVANS SURVEY

**SURVEY IN NW 1/4 SECTION 21 AND
 E 1/2 SECTION 16, T21S, R4W, W.M.
 DOUGLAS COUNTY, OREGON**

FOR
WEYERHAEUSER COMPANY
 BY
PEEL BAKER LAND SURVEYING INC.
 COUNTY SURVEYORS FILE DATA
 APRIL 27, 1987
 DO NOT REMOVE FROM OFFICE

TILED
 MAY 22 1987
 COUNTY SURVEYOR
 DOUGLAS COUNTY, ORE.