

LEGEND

- ⊙ FOUND MONUMENT
- SET 5/8" x 30" I. ROD W/L.S. CAP

COUNTY SURVEYORS FILE DATA
DO NOT REMOVE FROM OFFICE

REGISTERED
PROFESSIONAL
LAND SURVEYOR

Donald L. Branch

OREGON
SEPTEMBER 23 1977
DONALD L. BRANCH
1137

Scale:
Horizontal: 1" = 500'
Vertical:

Project - Title - Location:
RECORD OF SURVEY IN
SEC. 24, T. 23 S., R. 4 W., W.M.
DOUGLAS COUNTY, OREGON

Revisions:

Client:

U. S. BANK



Branch Engineering

Association of Independent Engineers
212 G Street
Springfield, Oregon 97477
(503) 746-0389

Date:

4-15-87

Field Book No.

68#69

Project No.

87-58

FILED

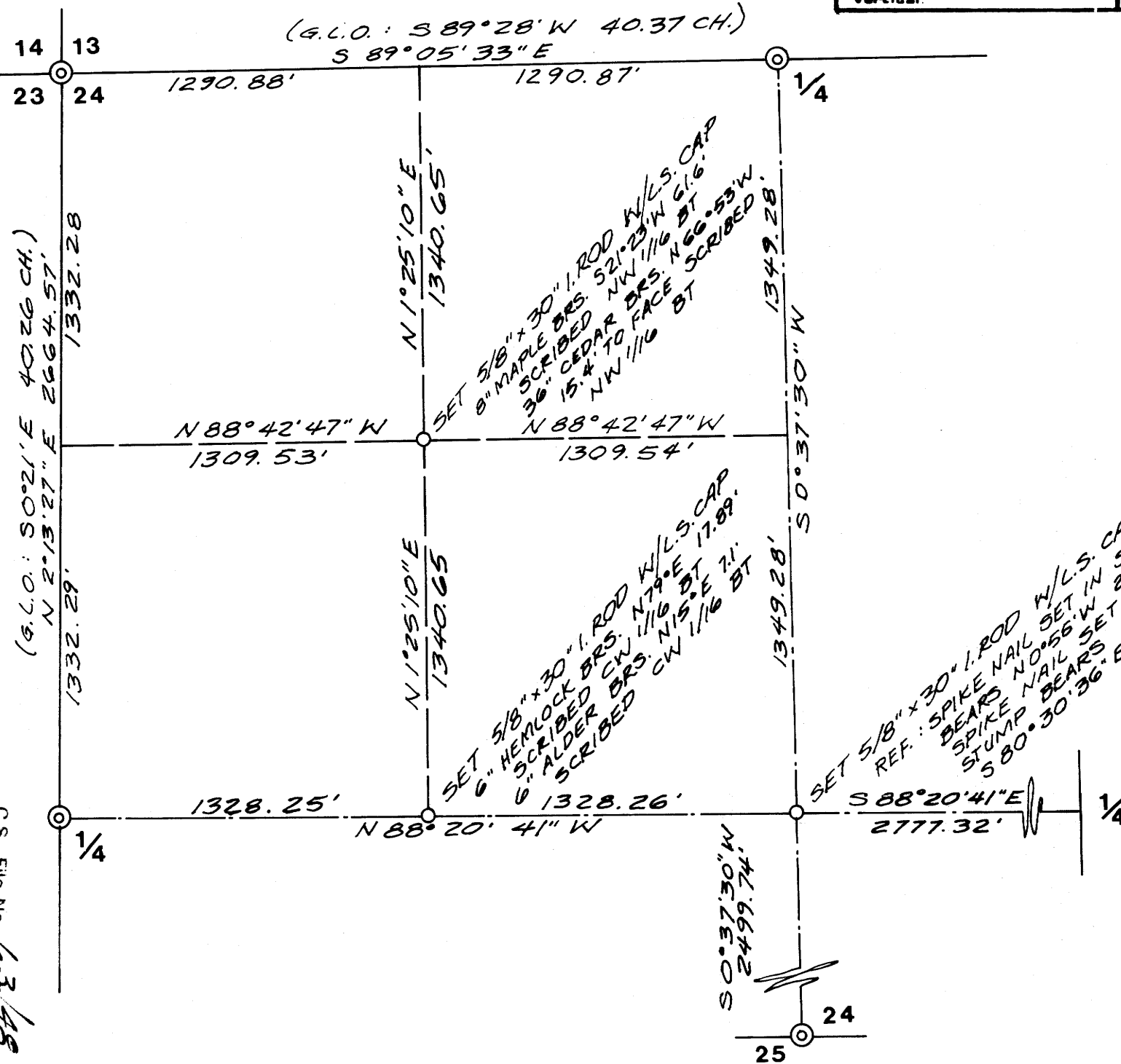
APR 24 1987 TF

COUNTY SURVEYOR
DOUGLAS COUNTY, OREGON

TF

C.S. File No. 63/48

MAP FILE M107-1



NARRATIVE:

The purpose of this survey is to establish the C1/4, CW 1/16, & NW 1/16 corners of said section 24. For control, the following 1/4 corners and section corner were used:

Section corner 14,13,23,24:

Found standard B.L.M. Brass Cap flush with the ground in stones. Corner lies in clear-cut unit and all B.T.'s are stumps with signs and they agree with record.

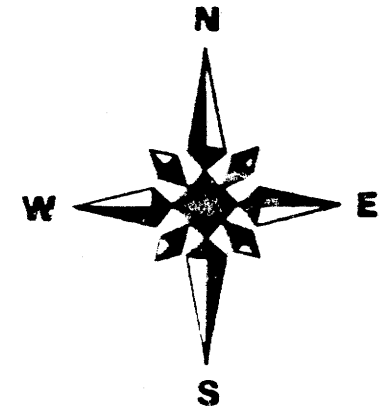
North 1/4 corner section 24:

Found 1965 County brass cap per record.
Found B.T.'s:

- 36" fir stump bears N 4° W 14.4'
- 22" fir stump bears N 21° E 27.5'
- 18" fir snag bears N 57° E 16.4'
- other B.T.'s not searched for.
- Established new B.T.: 11" Hemlock bears S 24° W 7.57' scribed 1/4 BT w/ L.S. washer.

East 1/4 Corner Section 24:

No monument found.
Found 54" fir stump with sign that says corner bears S 28° W 32.4 feet.
42" fir in NW quadrant gone.
Set spike nail with L.S. cap in log for 1/4 corner (S 28° W 32.4 feet from 54" B.T.)
From which I established the following B.T.'s:
3" D. fir bears S 70° W 2.7 feet with "X" scribed and L.S. washer.
2" D. fir bears S 43° E 4.1 feet with "X" scribe and L.S. washer



BASIS OF BEARINGS:
SOLAR NEAR, C 1/4
(ALT. METHOD)

S. 1/4 cor. Sec. 24;

Fd. Haines "T" iron
Fd. 63" fir stump bears N 52° W 25.8 feet with "W" nail & tag.
Fd. 16" hemlock bears S 11° W 25.0 feet with "W" nail healed blaze.

W. 1/4 Corner Section 24:

Fd. Haines "T" iron.
Fd. 36" fir stump bears S 88° W 46.2 feet to face per record.
Fd. 8" yew bears N 24° W 34.6 with healed blaze and tag.
Fd. NE BT down.
New B.T.: 6" hemlock bears N 88° E 11.1 feet scribed "X" BT & set L. S. washer in the blaze.

C.S. File No. 63/48

MAP FILE M107-1