

N.W. CORNER SECTION 12

FD. 1954 G.L.O. BRASS CAP
12" FIR, N47°E, 4.7' (SCAR VIS.), 1954 B.T.
18" FIR, S17°W, 5.3' (SCAR VIS.), 1954 B.T.
22" FIR, N50°W, 26.2' (SCAR VIS.), 1954 B.T.
24" FIR, S53°E, 26.8' (SCAR VIS.), 1954 B.T.

NORTH 1/4 CORNER SECTION 12

FD. 1954 G.L.O. BRASS CAP
10" FIR, N38°E, 13.7' (SCAR VIS.), 1954 B.T.
16" FIR, S60°W, 13.7' (SCAR VIS.), 1954 B.T.

N.E. CORNER SECTION 12

FD. 1954 G.L.O. BRASS CAP LOOSELY SET IN GROUND. CAP RE-SET FROM FOUND B.T.'S.
30" FIR STUMP, N50°E, 25.1' (NO MARKS), 1884 B.T.
58" FIR SNAG, S87 1/2°W, 24.4' (SCRIBE VIS.), 1954 B.T.
52" FIR STUMP, N36 1/2°W, 43.0' (SCRIBE VIS.), 1954 B.T.

PROPERTY SURVEYORS FILE DATA DO NOT REMOVE FROM OFFICE

FILED
MAR 20 1987 TF
COUNTY SURVEYOR DOUGLAS COUNTY, OREGON TF

SURVEY OF SECTION 12, T20S, R8W, W.M. DOUGLAS COUNTY, OREGON FOR INTERNATIONAL PAPER COMPANY BY

ROBERTS SURVEYING INC.
29 WEST 29TH STREET
EUGENE, OREGON 97405
DECEMBER 30, 1986

REGISTERED PROFESSIONAL LAND SURVEYOR

Lee Roberts
OREGON
L. D. ROBERTS
1039

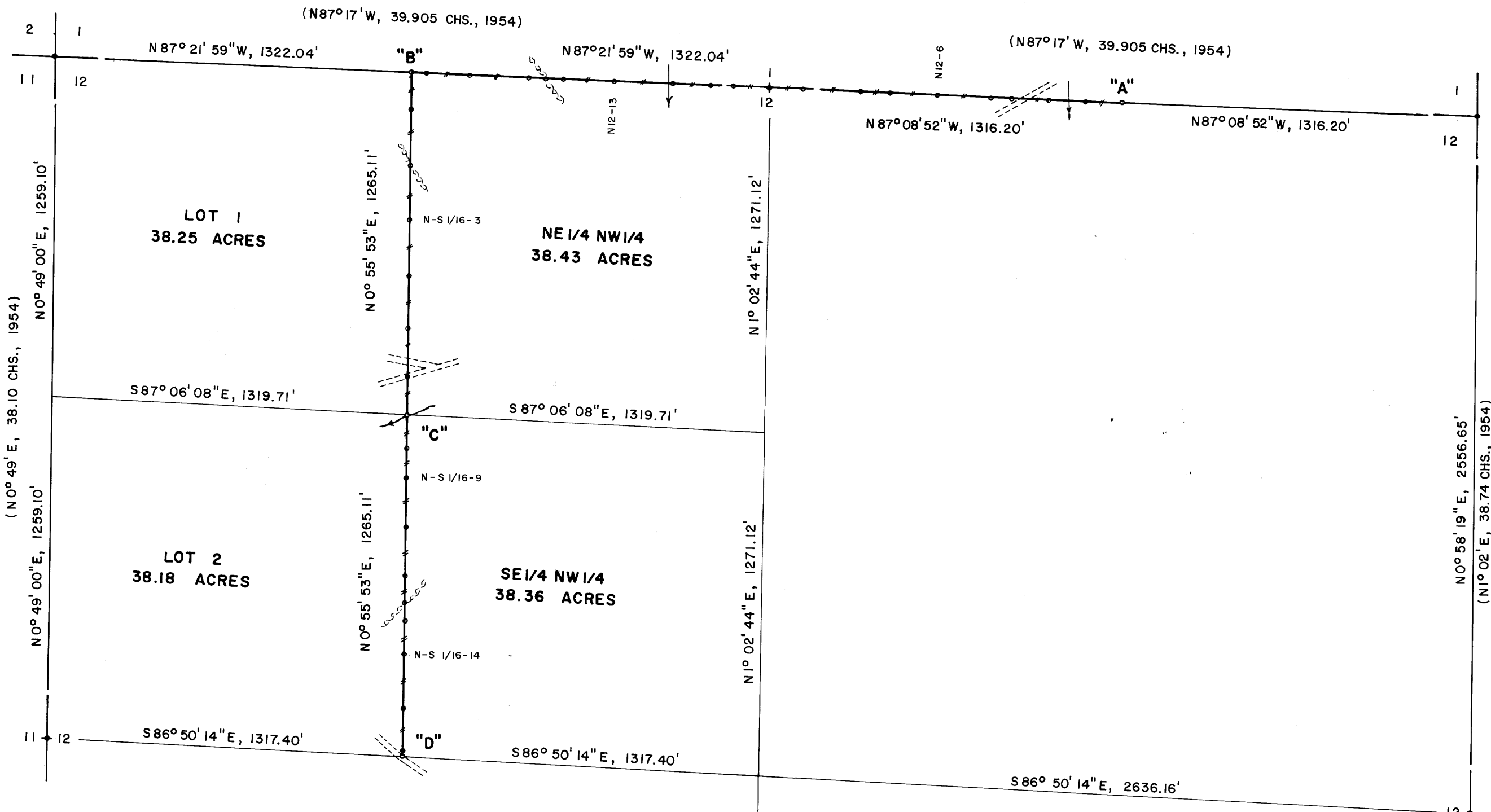


Table with 4 columns: E. 1/16 COR., WEST (M.M. & FC. POST), LOCATION OF MAGNETIC MARKERS, SOUTH (M.M. & FC. POST). Lists markers N12-2 through N12-18 and W. 1/16 COR.

WEST 1/4 CORNER SECTION 12

FD. 1954 G.L.O. BRASS CAP.
10" FIR STUMP, S54°E, 14.5' (NO MARKS), 1954 B.T.
12" FIR STUMP, S65°W, 31.0' (NO MARKS), 1954 B.T.
21" FIR, S70°E, 40.5' (SCAR VIS.), 1967 B.T.
SET 6" FIR, N09°W, 25.9' (SCRIBED/PAINTED RED)

"A" EAST 1/16 CORNER, NORTH LINE

SET 5/8" x 36" ALUMINUM ROD WITH ALUMINUM CAP (BURIED PURPLE M.M. UNDER 36" ROD)
6" FIR, N05°E, 25.0' (SCRIBED/PAINTED RED)
8" FIR, S42°E, 48.3' (SCRIBED/PAINTED RED)

"B" WEST 1/16 CORNER, NORTH LINE

SET 5/8" x 36" ALUMINUM ROD WITH ALUMINUM CAP (BURIED PURPLE M.M. UNDER 36" ROD)
24" FIR, S57°W, 18.8' (SCRIBED/PAINTED RED)
24" FIR, N65°W, 29.6' (SCRIBED/PAINTED RED)

"C" NW 1/6 CORNER SECTION 12

SET 5/8" x 36" ALUMINUM ROD WITH ALUMINUM CAP (NO PURPLE M.M. BURIED UNDER 36" ROD)
20" MAPLE, S31°W, 55.7' (SCRIBED/PAINTED RED)
32" FIR, S82°E, 38.0' (SCRIBED/PAINTED RED)

"D" CW 1/16 CORNER SECTION 12

SET 5/8" x 36" ALUMINUM ROD WITH ALUMINUM CAP (BURIED PURPLE M.M. UNDER 36" ROD)
6" FIR, N33°E, 30.9' (SCRIBED/PAINTED RED)
8" FIR, N79°W, 103.7' (SCRIBED/PAINTED RED)

EAST 1/4 CORNER SECTION 12

FD. 1954 G.L.O. BRASS CAP (BENT TO WEST)
16" FIR STUMP, S63°E, 10.2' (SCAR VIS.), 1884 B.T.
54" FIR STUMP, S52°W, 6.2' (NO MARKS), 1884 B.T.
44" FIR STUMP, N51°W, 46.4' (SCRIBE VIS.), 1954 B.T.
SET 8" FIR, N14°W, 10.0' (SCRIBED/PAINTED RED)
DROVE "R.R." SPIKE IN TOP OF 54" FIR STUMP. SPIKE BEARS S53°W, 5.3' FROM CORNER.

NARRATIVE

I, LES ROBERTS, REGISTERED PROFESSIONAL LAND SURVEYOR DO CERTIFY THAT I HAVE CORRECTLY SURVEYED SECTION 12 IN ACCORDANCE TO THE MANUAL OF INSTRUCTIONS FOR THE SURVEY OF THE PUBLIC LANDS OF THE UNITED STATES. THE CENTER 1/4 CORNER WAS ESTABLISHED AT THE INTERSECTION OF THE N-S AND E-W CENTER LINES OF SECTION 12. THE EAST 1/16 CORNER AND THE WEST 1/16 CORNER BETWEEN SECTIONS 1 AND 12 WERE SET HALF-WAY BETWEEN THE NORTH 1/4 CORNER AND THE N.E. AND N.W. SECTION CORNERS RESPECTIVELY. THE NW 1/16 CORNER WAS SET AT THE INTERSECTION OF THE N-S AND E-W CENTER LINES OF SAID NW 1/4. THE CW 1/16 CORNER WAS SET HALF-WAY BETWEEN THE C1/4 CORNER AND THE WEST 1/4 CORNER AS SHOWN. A CLOSED MEANDER TRANSIT AND E.D.M. TRAVERSE WAS RUN BETWEEN ALL FOUND CORNERS & USED FOR CONTROL. A CLOSED MEANDER TRANSIT & E.D.M. TRAVERSE WAS RUN ALONG ALL BLAZED AND POSTED P/L'S. OFFSETS WERE COMPUTED FROM THIS MEANDER TRAVERSE TO THE TRUE P/L. PROPERTY LINES WERE MARKED WITH RED PAINTED BLAZES, RED RIBBON, YELLOW INTERNATIONAL PAPER CO. PROPERTY LINE SIGNS, FLUORESCENT ORANGE MAGNETIC MARKERS & 1/2" x 60" IRON REBAR WITH ALUMINUM, LOCATED AS SHOWN. IRON REBAR AND BURIED MAGNETIC MARKERS ARE REFERENCED BY A 4" x 6" ALUM. INTERNATIONAL PAPER BOUNDARY LINE TAG NAILED TO A NEARBY TREE. TAG NOTES BEARING & DISTANCE FROM TREE TO IRON ROD OR BURIED MAGNETIC MARKER.

SOUTH 1/4 CORNER SECTION 12

FD. 1954 G.L.O. BRASS CAP
ROOT HOLE, N47°E, 22.5', 1960 B.T.
ROOT HOLE, S44°E, 58.0', 1960 B.T.
26" FIR STUMP, S11°W, 36.8' (SCRIBE VIS.), 1967 B.T.
SET 6" FIR, S15°E, 18.8' (SCRIBED/PAINTED RED)
12" FIR, N46°E, 8.6' (SCRIBED/PAINTED RED)

LEGEND

- CORNERS FOUND AND USED FOR CONTROL.
o CORNERS SET, 5/8" x 36" ALUMINUM RODS WITH ALUMINUM CAPS STAMPED S-T-R, DATE AND P.L.S. NO. 1039.
— LINE MARKED AND BLAZED THIS SURVEY.
() DATA OF RECORD, ORIGINAL 1884 G.L.O. SURVEY AND 1954 G.L.O. SURVEY.
BASIS OF BEARING, NORTH 1/2 OF WEST LINE SECTION 12 FROM 1954 G.L.O. SURVEY.
(M.M.) INDICATES LOCATION OF BURIED MAGNETIC MARKERS. MARKERS ARE FLUORESCENT ORANGE IN COLOR AND ARE BURIED, 12" TO 18" DEEP, ALONG LINE AS SHOWN.
DISTANCE TO B.T.'S ARE CENTER MEASURE.
ALL NEW B.T.'S ARE SCRIBED AND HAVE A BRASS WASHER STAMPED "P.L.S. 1039" NAILED TO THE LOWER BLAZE. SCRIBED BLAZES ARE PAINTED RED.
ALL NEW B.T.'S HAVE A 6" STEEL SPIKE DRIVEN INTO THE CENTER OF THE TREE TO SERVE AS A CHAINING POINT FOR MEASURED DISTANCES.
SCALE 1" = 400'

103-63

63/46
M103-63