

(South, 40.00 ch.)

① 1/4 CORNER S35/S2
 Found a 1958 B.L.M. BCIP, from which :
 57" fir stump bears N59-1/2°W, 31.7' (1958)
 42" fir stump bears S02-1/2°W, 75.3'
 (rec. = 76.6') (1958)
 8" fir bears N02°E, 16.5' (1981)
 All BT's have closed faces

③ CN 1/16 CORNER S2
 Set an ACIP, and the following BT's :
 7" fir bears N64°W, 9.1'
 15" fir bears S07°W, 22.2'
 Both scribed : CN 1/16 S2 BT

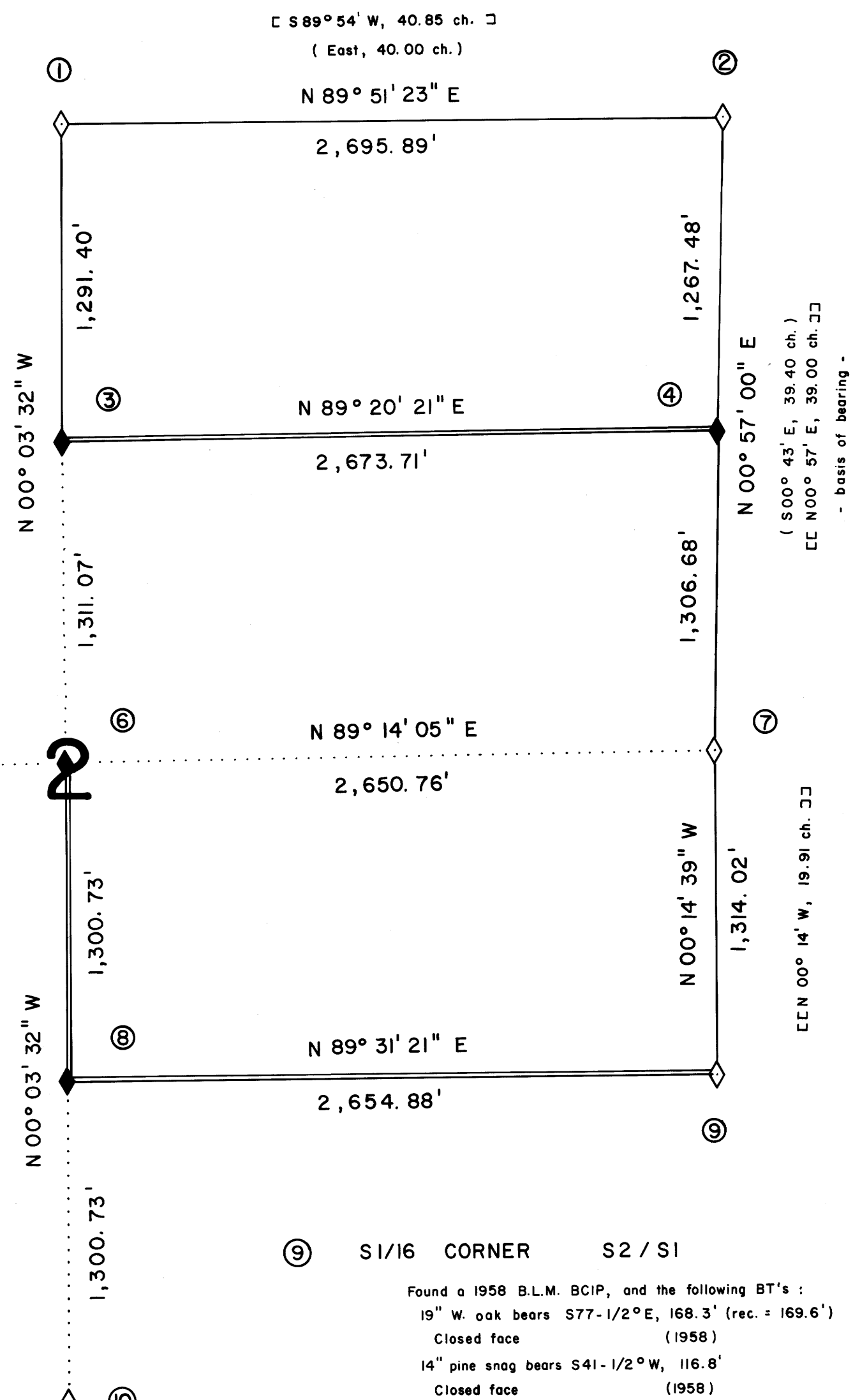
④ N1/16 CORNER S2/S1
 Set an ACIP, and the following BT's :
 19" fir bears S44°E, 9.5'
 Scribed : N1/16 S1 BT
 16" fir bears S73°W, 30.4'
 Scribed : N1/16 S2 BT
 A 1" iron rod bears S25°E, 14.5'

⑤ 1/4 CORNER S3/S2
 Found a 1958 B.L.M. BCIP, alongside of which is a
 1954 County Surveyor's BCIP, and the following BT's :
 24" fir bears N80°E, 47.5' (rec. = 46.9')
 No scribe marks visible in opened face (original)
 7" yew bears S49°E, 28.8' (rec. = 30.4')
 Scribing partially visible (1954)
 10" badly rotted fir stump bears S76-1/2°W,
 107.9' Fragmentary scribe marks found. (1954)
 40" fir bears S39°W, 65.3'
 Closed face (1958)
 12" cedar bears N74-1/2°E, 61.1'
 (rec. = 62.0') Closed face (1958)

⑥ C1/4 CORNER S2
 Set a 2-1/2" aluminum cap on a 2-1/2" x 30" flared
 aluminum pipe, and the following BT's :
 6" fir bears N11°E, 59.9'
 8" fir bears S88°E, 66.5'
 Both scribed : C1/4 S2 BT

⑦ 1/4 CORNER S2/S1
 Found a 1958 B.L.M. BCIP, and the following BT's :
 40" fir snag bears S63°W, 47.3' (rec. = 46.2')
 Scribing visible (1936)
 40" fir stump bears N51°E, 80.7' (rec. = 80.0')
 Fragmentary scribe marks visible (1936)
 13" fir bears S75°W, 22.4'
 Closed face (1982)
 8" fir bears N03-1/4°E, 51.8' (rec. = 51.5')
 Closed face (1982)
 Found a 5/8" iron pipe alongside BCIP.

⑧ CS 1/16 CORNER S2
 Set an ACIP, and the following BT's :
 9" fir bears N82°W, 10.7'
 14" fir bears S11°E, 12.5'
 Both scribed : CS 1/16 S2 BT



REGISTERED
 PROFESSIONAL
 LAND SURVEYOR
 Ronald G. Geisler
 OREGON
 JULY 16, 1982
 RONALD G. GEISLER
 1988

② SECTION CORNER S35/S36/S1/S2

Found a 1958 B.L.M. BCIP, from which :
 A root hole bears N11°E, 1.6' with a down, 14" fir alongside
 it. No scribe marks visible. (1936)
 14" fir snag bears S72°W, 19.1'
 No scribe marks visible (1936)
 24" rotted fir stump bears S34°E, 22.4'
 Rotted face (1936)
 11" rotting fir stump bears N36°W, 8.7' (rec. = 8.0')
 Scribing visible (1936)
 23" fir stump bears N51-1/2°E, 42.2' (rec. = 43.6')
 Closed face (1958)
 21" cedar bears S73-1/4°E, 56.0' (rec. = 56.8')
 Closed face (1958)
 24" cedar stump bears N45°W, 25.5'
 Closed face (1966)
 22" cedar bears S61-3/4°W, 16.8'
 Scribing visible (1980)
 8" maple bears N32-1/2°W, 30.3' (rec. = 30.0')
 Scribing visible (1982)
 7" fir bears N71-1/4°E, 21.9'
 Scribing partially visible (1982)

- NOTES
- 1) ACIP refers to a 2-1/2" aluminum cap set on a 1" x 36" iron pipe.
 - 2) BCIP refers to a 3-1/2" brass cap set on a 2-1/2" iron pipe.
 - 3) All monuments set are stamped according to the descriptions given in the 1973 B.L.M. Manual of Surveying Instructions, Chapter IV. In addition, each monument set, is stamped: PLS 1988.
 - 4) All bearings to corner accessories were taken with a hand compass. Mean magnetic variation = 19°45' E.
 - 5) Distances to bearing trees are measured to the side and center of the tree, one foot above the root crown.

SURVEY NARRATIVE

This survey was conducted to establish property lines for Champion International Corporation in Section 2, T27S, R3W, W.M.. Basis of bearing was obtained from a 1982 B.L.M. dependent resurvey between the E1/4 corner and the NE corner of Section 2 (N00° 57' E). Section 2 was originally surveyed by Flint and Williams in 1871. The B.L.M. executed dependent resurveys of portions of subdivisional lines in section 2 in 1958, 1981, 1982 and 1984. The N1/4 corner of section 2 and the S1/16 corner common to sections 1 and 2 were proportioned and set by the B.L.M., in 1958. The other controlling corners were renewed by several County Surveyors and the B.L.M., based on original evidence found. The section was subdivided according to the 1973 B.L.M. Manual of Surveying Instructions. The N1/16 corner common to sections 1 and 2, and the CN1/16 corner were established at 20 chains, proportionate measure. All traverses run were closed loops with a minimum error of closure of one part in 5,000. The survey was run with a Topcon GTS-2, and an AGA 76 geodimeter. A portion of the property lines were blazed, flagged and posted with 5" steel fence posts with attached "Champion" tags.

Ronald G. Geisler, Oregon P.L.S. 1988
 Champion International Corporation
 P.O. Box 1328
 Roseburg, Oregon 97470

SURVEY OF
 SEC. 2, T27S, R3W, W.M.
 DOUGLAS COUNTY, OREGON
 BY
 CHAMPION INTERNATIONAL CORPORATION

FEBRUARY 1987

R.G.G.

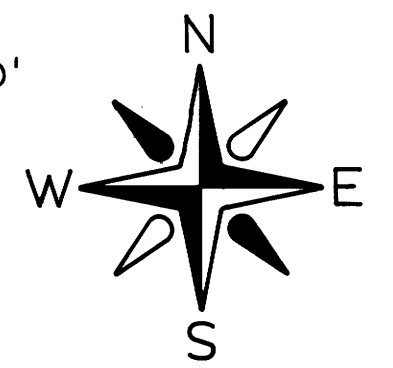
COUNTY SURVEYORS FILE DATA
 DO NOT REMOVE FROM OFFICE

FILED
 MAR 20 1987 TF
 COUNTY SURVEYOR
 DOUGLAS COUNTY, ORE
 TF

LEGEND

◆	Corner set this survey
◇	Corner found and used for control
—	Property line posted
()	1871 G.L.O. record course
□	1958 B.L.M. record course
□□	1982 B.L.M. record course

SCALE: 1" = 500'



MAP FILE M103-61

MAP FILE M103-61