

DESCRIPTION OF CONTROLLING CORNERS

1/4 COR. BTWN. SECTIONS 35 & 2
 FOUND G.L.O. IRON PIPE 1" DIAM. WITH
 BRASS CAP, 6" ABOVE GROUND
 FROM WHICH:
 FIR STUMP, 24" DIAM. N. 59° W. 33.9' MKRD "1/4 S 35 BT"
 FIR STUMP, 21" DIAM. N. 67° E. 17.3' BLAZE ROTTED
 NEW B.T.:
 FIR 7" DIAM. N. 49 1/2° W. 43.7' TO SPIKE, MKRD "1/4 S 35 BT"
 NO OTHER TREES AVAILABLE

SECTION CORNER
 FOUND G.L.O. IRON PIPE 2" DIAM. WITH
 BRASS CAP, 5" ABOVE GROUND
 FROM WHICH:
 FIR 22" DIAM. N. 52° E. 15.2', HEALED BLAZE
 FIR 18" DIAM. S. 69 1/2° E. 23.1', HEALED BLAZE
 FIR 17" DIAM. S. 68 1/4° W. 18.5', HEALED BLAZE
 FIR 22" DIAM. N. 49 1/2° W. 35.6', HEALED BLAZE

1/4 COR. BTWN. SECTIONS 35 & 36
 FOUND G.L.O. 1" DIAM. IRON PIPE WITH
 BRASS CAP, 10" ABOVE GROUND
 FROM WHICH:
 FIR 48" DIAM. N. 6° W. 21.1', HEALED BLAZE
 FIR 20" DIAM. (DOWN) S. 63° E. 14.3' TO CENTER ROOT HOLE
 NEW B.T.:
 FIR 23" DIAM. N. 40° E. 62.0' TO SPIKE, MKRD "1/4 S 36 BT"

COUNTY SURVEYORS FILE NO. 1
 DO NOT REMOVE FROM OFFICE

FILED TF
 DEC 23 1986
 COUNTY SURVEYOR
 DOUGLAS COUNTY, ORE.
 TF

LOCATION OF MAGNETIC MARKERS

POINT	DISTANCE WEST FROM SECTION CORNER	DESCRIPTION
SE. COR. SEC. 35	0	G.L.O. BRASS CAP & B.T.'S
S-1	263'	ALUM. FENCE POST & M.M. @ W. SIDE OF ROAD
S-2	350'	WOOD POLE & M.M. @ W. EDGE OLD CAT ROAD
S-3	548'	IRON ROD-ALUM. CAP & M.M.
S-4	758'	IRON ROD-ALUM. CAP & M.M.
S-5	886'	WOOD POLE & M.M.
S-6	1110'	IRON ROD-ALUM. CAP & M.M.
E 1/16 COR.	1319.94'	ALUM. CAP ON ALUM. ROD & M.M. & B.T.'S
S-7	1510'	IRON ROD-ALUM. CAP & M.M.
S-8	1742'	WOOD POLE & M.M.
S-9	1819'	WOOD POLE & M.M.
S-10	2027'	IRON ROD-ALUM. CAP & M.M.
S-11	2220'	ALUM. FENCE POST & M.M. @ E. SIDE OF ROAD
S-12	2375'	WOOD POLE & M.M.
S-13	2526'	IRON ROD-ALUM. CAP & M.M.
1/4 COR. BTWN. SEC. 35 & 2	2639.88'	G.L.O. BRASS CAP & B.T.'S

POINT	DISTANCE NORTH FROM SECTION CORNER	DESCRIPTION
SE. CORNER SEC. 35	0	G.L.O. BRASS CAP & B.T.'S
E-1	109'	ALUM. FENCE POST & M.M. @ N. SIDE ROAD
E-2	315'	WOOD POLE & M.M.
E-3	525'	IRON ROD-ALUM. CAP & M.M.
E-4	691'	IRON ROD-ALUM. CAP & M.M.
E-5	917'	WOOD POLE & M.M.
E-6	1018'	WOOD POLE & M.M.
E-7	1168'	IRON ROD-ALUM. CAP & M.M.
5/16 COR.	1315.04'	ALUM. CAP ON ALUM. ROD (NO M.M.) & B.T.'S
E-8	1501'	WOOD POLE & M.M.
E-9	1711'	IRON ROD-ALUM. CAP & M.M.
E-10	1871'	WOOD POLE & M.M.
E-11	2075'	IRON ROD-ALUM. CAP & M.M.
E-12	2254'	WOOD POLE & M.M.
E-13	2387'	IRON ROD-ALUM. CAP & M.M.
1/4 COR. BTWN. SEC. 35 & 36	2630.08'	G.L.O. BRASS CAP & B.T.'S

NARRATIVE

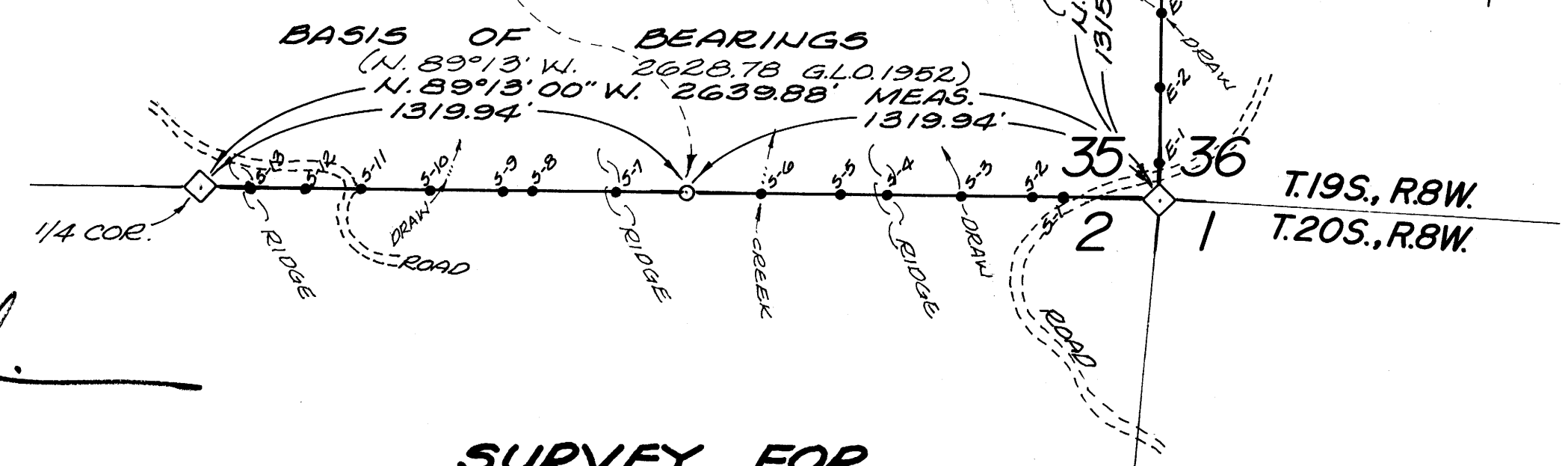
THE PURPOSE OF THIS SURVEY IS TO ESTABLISH AND MONUMENT THE 5/116 CORNER BETWEEN SECTIONS 35 & 36, T.19S., R.8W. AND THE E. 1/16 CORNER BETWEEN SAID SECTION 35 AND SECTION 2, T.20S., R.8W.. ALSO TO POST AND BLAZE THE SOUTH AND EAST LINE OF SECTION 35 AS SHOWN HEREON. A CLOSED TRAVERSE WAS EXECUTED TO MAKE TIES TO EXISTING AND CONTROLLING CORNERS USING A TOPCON GT5-2 TOTAL STATION THEODOLITE AND E.D.M. INSTRUMENT. POINTS ON TRUE LINE WERE DIRECTLY SET FROM PRIMARY CONTROL TRAVERSE POINTS AND OFFSETS WERE COMPUTED TO TRUE LINE FROM PROPERTY LINE TRAVERSE POINTS. THE TRUE PROPERTY LINE WAS MARKED WITH RED PAINTED TREE BLAZES, RED FLAGGING, YELLOW "INTERNATIONAL PAPER CO." PROPERTY LINE SIGNS, FLORESCENT ORANGE MAGNETIC MARKERS AND 1/2" DIAM. x 60" LONG IRON RODS WITH ALUMINUM CAPS, LOCATED AS SHOWN AND LISTED HEREON. BASIS OF BEARINGS OF THIS SURVEY IS THE RECORD (G.L.O. 1952) BEARING ON THE LINE BETWEEN THE 3/14 CORNER AND S.E. CORNER BOTH OF SECTION 35, AS SHOWN HEREON.

CORNERS SET

RLS
869
535 | 536
5/16
1986

SET 5/8" DIAM. ALUMINUM ROD, 14" LONG IN 5" DEEP DRILL HOLE IN BEDROCK, WITH 3/4" DIAM "INTERNATIONAL PAPER TIMBERLANDS OPERATING CO." ALUM. CAP FROM WHICH:
 FIR 20" DIAM. S. 42° E. 11.2' TO SPIKE, MKRD "5/16 S 36 BT"
 FIR 19" DIAM. S. 30° W. 12.3' TO SPIKE, MKRD "5/16 S 35 BT"

SET 5/8" DIAM. ALUMINUM ROD, 40" LONG, WITH "INTERNATIONAL PAPER TIMBERLANDS OPERATING CO." ALUM. CAP FROM WHICH:
 HEMLOCK 25" DIAM. N. 25° E. 39.6' TO SPIKE, MKRD "E 1/16 535 BT"
 HEMLOCK 19" DIAM. S. 21° E. 44.1' TO SPIKE, MKRD "E 1/16 52 BT"



REGISTERED PROFESSIONAL LAND SURVEYOR
 OREGON JULY 12, 1968
 RICHARD CARL SKINNER 869

LEGEND

- ◇ CONTROLLING CORNER EVIDENCE FOUND — AS DESCRIBED HEREON.
- CORNER SET — AS DESCRIBED HEREON
- LINE MARK OR LINE POINT — AS NOTED IN LISTING OF LOCATION OF MAGNETIC MARKERS — LINE MARKERS ARE 1/2" DIAM. IRON ROD, 60" LONG, WITH ALUMINUM CAP STAMPED WITH DIRECTION AND DISTANCE TO THE NEAREST CORNER AND A FLORESENT ORANGE MAGNETIC MARKER BURIED 12" TO 18" DEEP ALONG SIDE. LINE POINTS ARE MADE OF WOOD POLES 60" LONG, PAINTED RED AND A FLORESCENT ORANGE MAGNETIC MARKER BURIED 12" TO 18" DEEP ALONG SIDE.

SURVEY FOR INTERNATIONAL PAPER COMPANY
 LINE BTWN. SECTION 35 & 36, T.19S., R.8W., W.M. & LINE BTWN. SECTION 35, T.19S., R.8W., W.M. & SECTION 2, T.20S., R.8W., W.M. DOUGLAS COUNTY, OREGON

SCALE 1" = 400 FEET
 RICHARD C. SKINNER, LAND SURVEYOR
 25031 LAVELL ROAD
 JUNCTION CITY, OR 97448
 (503) 938-2453
 DECEMBER 1986

MAP FILE M.A.R. 3-6

MAP FILE M.A.R. 3-6