

SURVEY IN THE SE 1/4 OF SECTION 22
T. 29S., R. 7W., W.M.
DOUGLAS COUNTY, OREGON

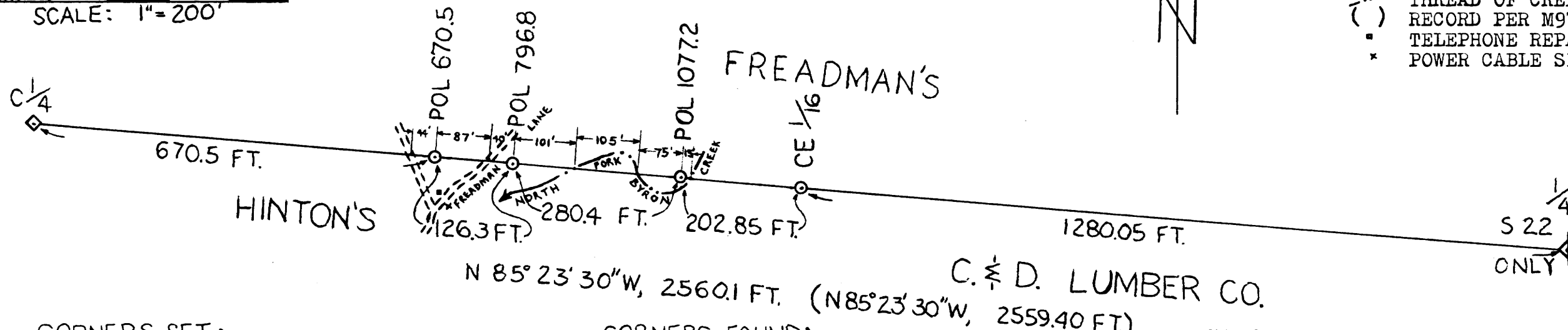
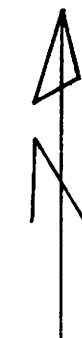
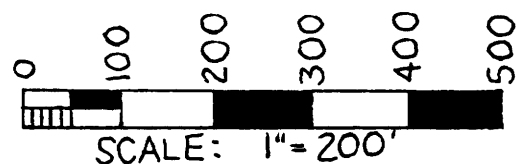
FILED *fl*
MAR 16 1987 TF
COUNTY SURVEYOR
DOUGLAS COUNTY, OREGON TF

REGISTERED
PROFESSIONAL
LAND SURVEYOR
fl
OREGON
JULY 28, 1985
LEONARD E. HERZSTEIN
2189

FOR RICK & KAREN HINTON
JANUARY 24, 1987

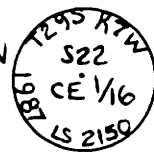
LEGEND

- ◇ CORNER FOUND
- CORNER SET
- == UNIMPROVED ROAD
- - - THREAD OF CREEK
- () RECORD PER M97-54, 1984
- TELEPHONE REPAIR BOX
- * POWER CABLE SIGN



CORNERS SET:

CE 1/16: SET 5/8" REBAR, 26" LONG, DRIVEN 26" IN THE GROUND WITH A 2" ALUMINUM CAP ATTACHED.
FROM WHICH NEW BTS MARKED:
A 12" DOUG. FIR, S12°30'E, 67.9 FT, SCRIBED "CE 1/16 BT" ON A SINGLE BLAZE.
A 5" DOUG. FIR, S63°45'W, 60.2 FT., SCRIBED "X" BT" ON A DOUBLE BLAZE.



POL 670.5: SET 5/8" REBAR, 34" LONG, DRIVEN 30" IN THE GROUND WITH A 1 1/2" ALUMINUM CAP ATTACHED.



POL 796.8: SET 5/8" REBAR, 30" LONG, DRIVEN 24" IN THE GROUND WITH A 1 1/2" ALUMINUM CAP ATTACHED.

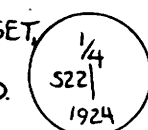


POL 1077.2: SET 5/8" REBAR, 21" LONG, DRIVEN 19" IN THE GROUND WITH A 1 1/2" ALUMINUM CAP ATTACHED.



CORNERS FOUND:

1/4 S22 ONLY: FOUND 1" IRON PIPE, FIRMLY SET, PROJECTING 6" FROM THE GROUND, WITH A 2 1/2" BRASS CAP ATTACHED.
FROM WHICH THE BTS ARE:
A 22" DOUG. FIR, S1°45'E, 27.7 FT. (REC. SOUTH, 44 LKS, PER B.L.M. 1981), WITH A HEALED DOUBLE BLAZE.
A 15" DOUG. FIR, N71°45'W, 26.6 FT. (REC. N 72°W, 41 LKS, PER B.L.M. 1981), WITH A HEALED DOUBLE BLAZE.



C 1/4: FOUND 5/8" REBAR, FIRMLY SET, PROJECTING 18" FROM THE GROUND, WITH A 2" ALUMINUM CAP ATTACHED.
FROM WHICH THE BTS ARE:
A 3" DOUG. FIR, N51°45'E, 18.5 FT. (REC. N50°E, 18.6 FT. PER M97-54), WITH SCRIBES "X C 1/4 BT" VISIBLE ON A SINGLE BLAZE.
A 5" I. CEDAR, S66°45'E, 22.9 FT. (REC. S68°E, 23.1 FT. PER M97-54), WITH SCRIBES "C 1/4 BT" VISIBLE ON A SINGLE BLAZE.
BOTH BTS HAVE A 3/4" BRASS WASHER, STAMPED "RLS 498", NAILED FLUSH TO THE BLAZE.



This plat correctly represents a survey I performed from November 10, 1985 through January 24, 1987. The survey was to locate and set the center east sixteenth corner and points on line (POL) along the north line of the northwest quarter of the southeast quarter of section 22.

I ran a control traverse using a Red 2 EDM and a Topcon TL-6DE theodolite. The basis of bearing was the retraced line from map file no. M97-54. I obtained a closure of 1 in 6,100. An adjustment to the angular closure was the only adjustment made to the traverse.

The corner and POLs were set out using a Lietz BT-20 transit and a 200 foot steel chain. The center east sixteenth corner was set at the midpoint between the found corners as per the U. S. Manual of Survey Instructions [ORS 209-070(4)].

All bearing trees (BTS) were measured to the center of the rootcrown. The bearings were determined with the transit by turning angles from the control traverse and using values to the nearest 15 minutes. BT sizes are the diameter at breast height.

The found telephone repair box bears S.02* 57' E., 62.0 ft. from POL 670.5. The found "underground power cables" sign bears S.10* 29' E., 80.7 ft. from POL 670.5.

Leonard E. Herzstein, 1741 Byron Creek Road, Winston, Oregon

COUNTY SURVEYORS FILE DATA
DO NOT REMOVE FROM OFFICE

MAP FILE M1103-58

MAP FILE M1103-58