

Sp. 9-19-144 A

B COUNTY SURVEYORS FILE  
DO NOT REMOVE FROM FILE

# A MINOR LAND PARTITION IN THE IN NW 1/4 OF SEC. 15, T28S, R6W, W.M.

FILED TF

MAR 13 1987 TF

COUNTY SURVEYOR  
DOUGLAS COUNTY, ORE. TF

M 103-53A

LAND OWNER:  
HELEN SHORT  
P.O. BOX 80  
WINCHESTER, OR. 97495

SURVEYED BY:  
DONALD A. BENTZ, INC.  
P.O. BOX 901  
WINCHESTER, OR. 97495

### NARRATION:

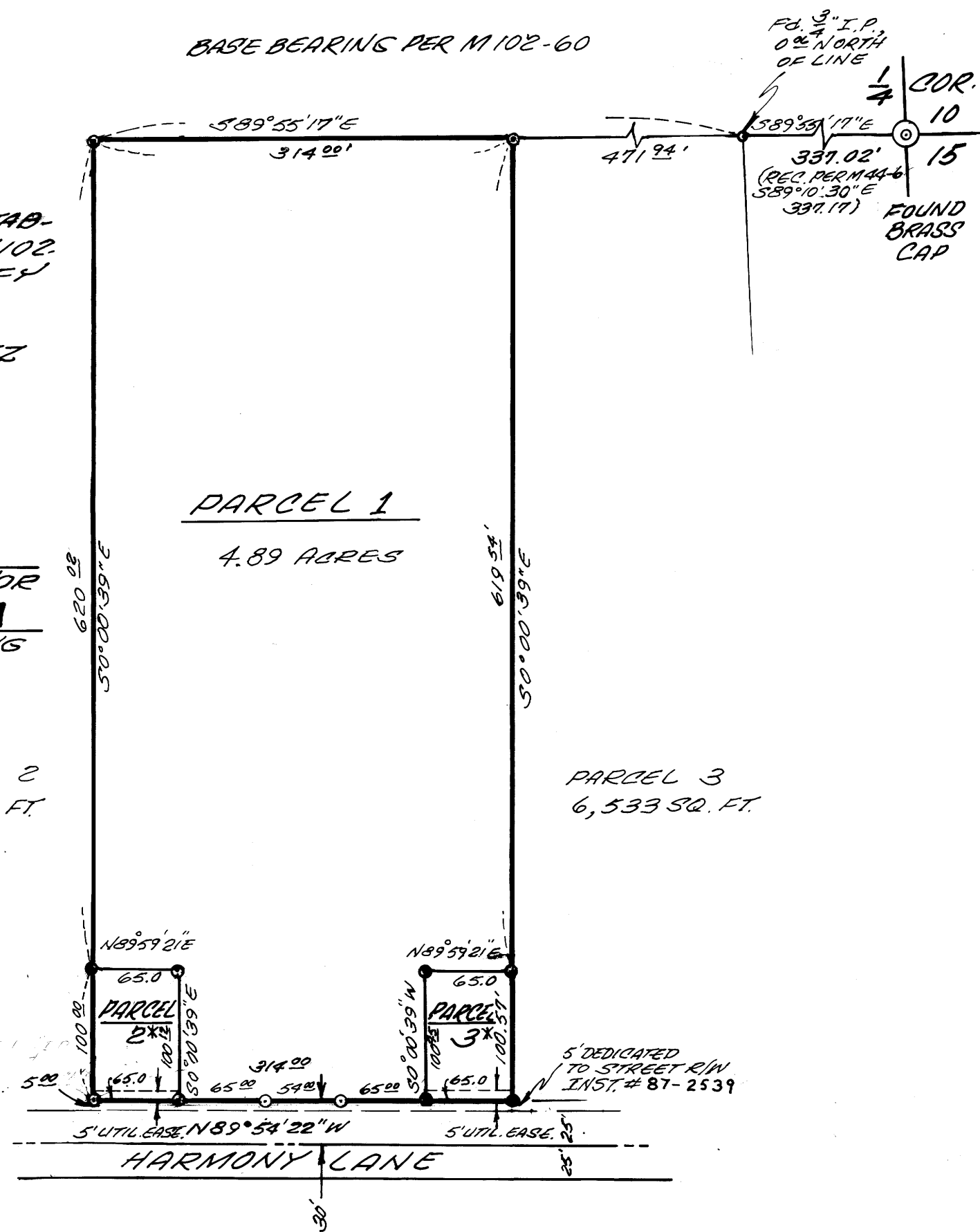
ALL MONUMENTS WERE ESTABLISHED ON SURVEY FILED M102-60. FIELD WORK TO VERIFY LOCATION ONLY.

COMPUTATIONS: D. BENTZ  
DRAFTING: D. STULL

### APPROVALS:

Larry E. Hansen DEPUTY 3-13-87  
DOUGLAS COUNTY SURVEYOR  
Keith L. Cubic 3/4/87  
DOUGLAS COUNTY PLANNING

PARCEL 2  
6,503 SQ. FT.



REGISTERED  
PROFESSIONAL  
LAND SURVEYOR

OREGON  
JULY 12, 1968  
DONALD A. BENTZ  
839

SEWER: GREEN SANITARY DISTRICT

WATER: ROBERTS CREEK WATER DISTRICT

POWER: PACIFIC POWER

ZONING: R-1

### LEGEND:

⊙ - FOUND 5" I.P. x 30" WITH PLASTIC CAP MK'D. "BENTZ SURVEY INC.", UNLESS OTHERWISE NOTED.

\* SUBJECT TO INST. # 87-2330

M 103-53A